

SUBMITTAL DATA SHEET



<b>TIP36/CHF36CD(O)</b>	<b>36,000 BTU/H(208/230V)</b>	<b>Wall Mounted Heat Pump System</b>
Location: _____	Approval: _____	
Engineer: _____	Date: _____	
Submitted to: _____	Construction: _____	
Submitted by: _____	Unit #: _____	
Reference: _____	Drawing #: _____	

**Set Model**  
 Indoor unit model TIP36  
 Outdoor unit model CHF36CD(O)

**Certified**  
**AHRI**   
**CSA**



**SYSTEM PERFORMANCE DATA**

<b>Power supply</b>		
Normal Operational Voltage	(V, Ph, Hz)	208/230, 1, 60
Voltage Range	(V)	187-253
<b>Electrical</b>		
Minimum circuit ampacity	(A)	41.0
Max.fuse	(A)	50.0
Connection wiring		14AWG*2 Stranded, shielded
<b>Cooling</b>		
Rated Capacity	(Btu/h)	36000
Capacity Range	(Btu/h)	13700~38000
Power Input (Max)	(W)	3790
Rated current	(A)	16.5
SEER	(Btu/W)	19
EER	(Btu/W)	9.5

<b>Heating at 47F</b>		
Rated Capacity	(Btu/h)	39000
Capacity Range	(Btu/h)	17600~47000
Power Input (Max)	(W)	3900
Rated current	(A)	17.5
HSPF4	(Btu/W)	10.3
HSPF5	(Btu/W)	8.8
COP	W/W	2.93

<b>Heating at 17F</b>		
Max Capacity	(Btu/h)	0

**REFRIGERANT PIPE DATA**

Design pressure	(PSIG)	550/340
Refrigerant Type	(Oz)	R410A/148
Refrigerant precharge	(ft)	25.0
	(m)	7.6
Additional charge for each ft	(oz/ft)	0.32
	(g/ft)	30
Liquid side/ Gas side	(inch)	3/8" / 5/8"
	(mm)	9.52/15.9
Max. pipe length	(ft)	213.0
	(m)	65.0
Max. difference in level	(ft)	98.0
	(m)	30.0
Connection method		(Flared)

Indoor(cooling/ heating)	(Deg. °F)	60~90 / 32~86
	(Deg. °C)	16~32 / 0~30
Outdoor(cooling/heating)	(Deg. °F)	-22~122 / -22~75
	(Deg. °C)	-30~50 / -30~24
Application area	(sq.ft)	516.67~753.47
	(m2)	48~70

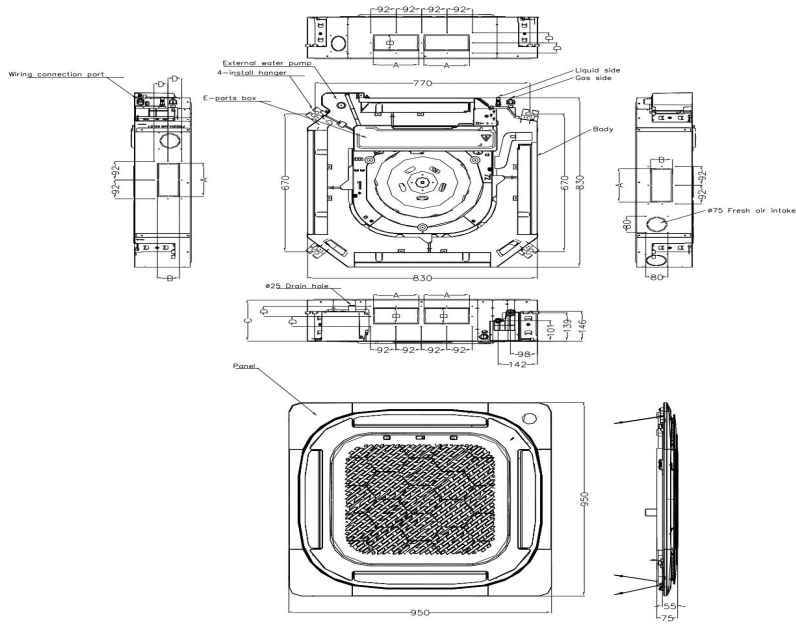
**INDOOR UNIT DATA**

<b>Indoor fan motor</b>		
Type		Cross-Flow
Model		ZKFN-125-8-1
Qty		1
Input	(W)	157.0
RLA	(A)	-
LRA	(A)	---
Winding Resistance	(Ω)	---
Capacitor	(uF)	---
Speed(Hi/Mi/Lo)	(r/min)	760/632/568
<b>Air flow &amp; Noise level</b>		
Indoor air flow (Hi/Med/Lo) (No c	(CFM)	947/853/753
Indoor noise level (Hi/Med/Lo)	[dB(A)]	52.5/50/46.5
<b>Dehumidification</b>	(Pint/H)	---
<b>Indoor unit</b>		
Dimension (WxDxH)	(inch)	32.68x32.68x9.65
	(mm)	830x830x245
Packing(WxDxH)	(inch)	35.83x35.83x11.42
	(mm)	910x910x290
Net/Gross weight	(lbs.)	59.97/69.00
	(kg)	27.2/31.3

**OUTDOOR UNIT DATA**

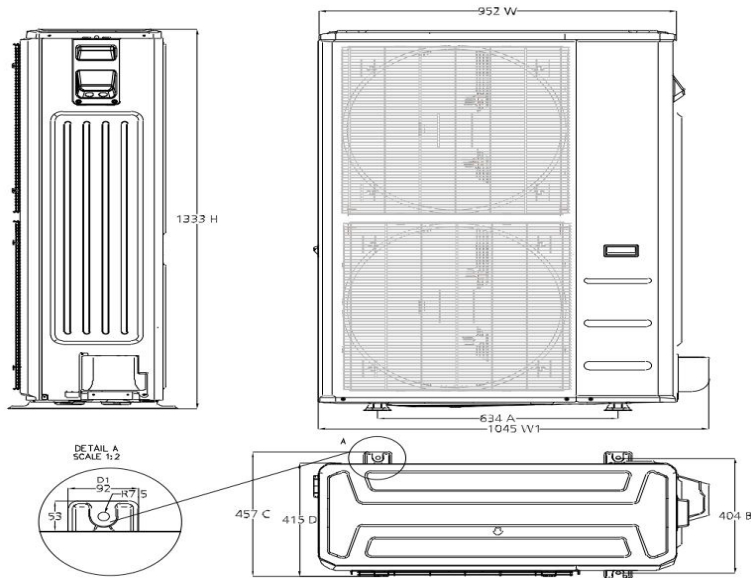
<b>Compressor</b>		
Type		EAPQ420D1UMUA
Model		ROTARY
Brand		GMCC
Capacity	(Btu/h)	44015
Input	(W)	3565
Rated current (RLA)	(A)	-
Refrigerant oil/oil charge	(ml)	INT01L-4639
Throttle		Capillary +EXV
<b>Outdoor fan motor</b>		
Model		ZKFN-85-8-22-5
Qty		2
Input	(W)	---
RLA	(A)	---
Speed	(r/min)	900/850/800/750
<b>Air flow &amp; Noise level</b>		
Outdoor air flow (Max.)	(CFM)	4500.00
Outdoor noise level	[dB(A)]	63.0
<b>Outdoor unit</b>		
Dimension (W×D×H)	(inch)	37.48x16.34x52.48
	(mm)	952x415x1333
Packing (W×D×H)	(inch)	43.11x19.49x58.27
	(mm)	1095x495x1480
Net/ Gross weight	(lbs.)	220.24/248.02
	(kg)	99.9/112.5

**Indoor unit dimension**



Capacity (Btu/h)	Unit	A	B	C	D
24K	mm	165	80	205	50
	inch	6.5	3.15	8.07	1.97
36K	mm	165	100	245	60
	inch	6.5	3.64	9.65	2.36
48K	mm	165	100	287	60
	inch	6.5	3.64	11.30	2.36

**Outdoor unit dimension**



**General Features**

Wireless Remote with LCD Display

Follow Me

Sleep

Timer

Self Clean

46F Heating

Silent

**Extended Performance Data**

**SUBMITTAL DATA SHEET**



<b>TIP48/CHF48CD(O)</b>	<b>48,000 BTU/H(208/230V)</b>	<b>Wall Mounted Heat Pump System</b>
Location: _____	Approval: _____	
Engineer: _____	Date: _____	
Submitted to: _____	Construction: _____	
Submitted by: _____	Unit #: _____	
Reference: _____	Drawing #: _____	

**Set Model**  
 Indoor unit model      TIP48  
 Outdoor unit model    CHF48CD(O)

**Certified**

**AHRI**

**CSA**



**SYSTEM PERFORMANCE DATA**

<b>Power supply</b>		
Normal Operational Voltage	(V, Ph, Hz)	208/230, 1, 60
Voltage Range	(V)	187-253
<b>Electrical</b>		
Minimum circuit ampacity	(A)	42
Max.fuse	(A)	50
Connection wiring		14AWG*2 Stranded, shielded
<b>Cooling</b>		
Rated Capacity	(Btu/h)	48000
Capacity Range	(Btu/h)	2700-48900
Power Input (Max)	(W)	6070
Rated current	(A)	25.24
SEER	(Btu/W)	16.5
EER	(Btu/W)	8.30

<b>Heating at 47F</b>		
Rated Capacity	(Btu/h)	51000
Capacity Range	(Btu/h)	11800-58000
Power Input (Max)	(W)	4900
Rated current	(A)	21.92
HSPF4	(Btu/W)	10.7
HSPF5	(Btu/W)	9.2
COP	W/W	3.05

<b>Heating at 17F</b>		
Max Capacity	(Btu/h)	0

**REFRIGERANT PIPE DATA**

Design pressure	(PSIG)	550/340
Refrigerant Type	(Oz)	R410A/148
Refrigerant precharge	(ft)	25.0
	(m)	7.6
Additional charge for each ft	(oz/ft)	0.32
	(g/ft)	30
Liquid side/ Gas side	(inch)	3/8" / 5/8"
	(mm)	9.52/15.9
Max. pipe length	(ft)	213.0
	(m)	65.0
Max. difference in level	(ft)	98.0
	(m)	30.0
Connection method		(Flared)

Indoor(cooling/ heating)	(Deg. °F)	60~90 / 32~86
	(Deg. °C)	16~32 / 0~30
Outdoor(cooling/heating)	(Deg. °F)	-22~122 / -22~75
	(Deg. °C)	-30~50 / -30~24
Application area	(sq.ft)	688.89~1011.81
	(m2)	64~94

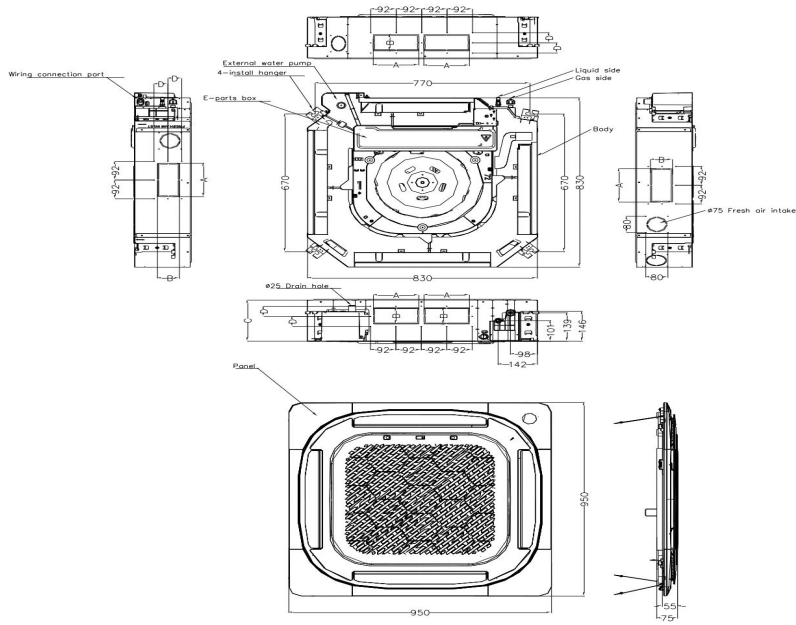
**INDOOR UNIT DATA**

<b>Indoor fan motor</b>		
Type		Cross-Flow
Model		ZKFN-125-8-1
Qty		1
Input	(W)	157.0
RLA	(A)	-
LRA	(A)	--
Winding Resistance	(Ω)	--
Capacitor	(uF)	--
Speed(Hi/Mi/Lo)	(r/min)	800/660/590
<b>Air flow &amp; Noise level</b>		
Indoor air flow (Hi/Med/Lo) (No c	(CFM)	1171/1059/935
Indoor noise level (Hi/Med/Lo)	[dB(A)]	55/53/50
Dehumidification	(Pint/H)	--
<b>Indoor unit</b>		
Dimension (WxDxH)	(inch)	32.68x32.68x11.30
	(mm)	830x830x287
Packing(WxDxH)	(inch)	35.83x35.83x12.99
	(mm)	910x910x330
Net/Gross weight	(lbs.)	64.59/74.07
	(kg)	29.3/33.6

**OUTDOOR UNIT DATA**

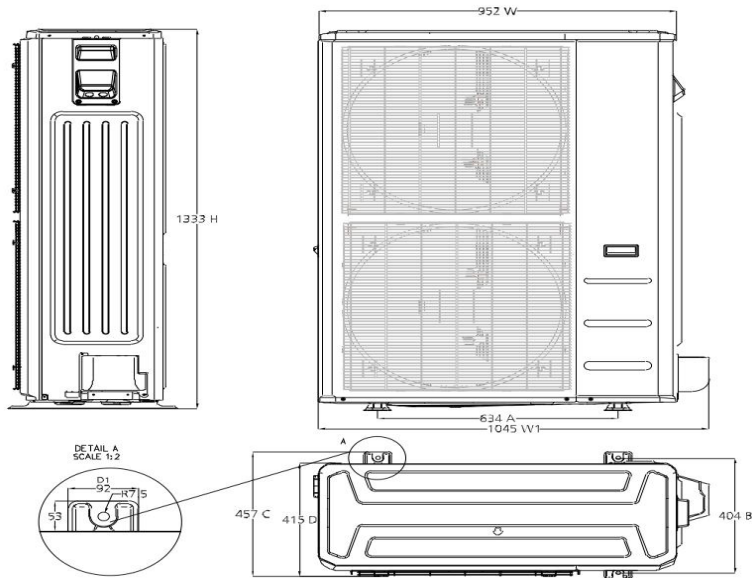
<b>Compressor</b>		
Type		EAPQ420D1UMUA
Model		ROTARY
Brand		GMCC
Capacity	(Btu/h)	44015
Input	(W)	3565
Rated current (RLA)	(A)	-
Refrigerant oil/oil charge	(ml)	INT01L-4639
Throttle		Capillary +EXV
<b>Outdoor fan motor</b>		
Model		ZKFN-85-8-22-5
Qty		2
Input	(W)	--
RLA	(A)	--
Speed	(r/min)	900/850/800/750
<b>Air flow &amp; Noise level</b>		
Outdoor air flow (Max.)	(CFM)	4500.00
Outdoor noise level	[dB(A)]	65
<b>Outdoor unit</b>		
Dimension (W*DxH)	(inch)	37.48x16.34x52.48
	(mm)	952x415x1333
Packing (WxDxH)	(inch)	43.11x19.49x58.27
	(mm)	1095x495x1480
Net/ Gross weight	(lbs.)	227.07/255.73
	(kg)	103/116

**Indoor unit dimension**



Capacity (Btu/h)	Unit	A	B	C	D
24K	mm	165	80	205	50
	inch	6.5	3.15	8.07	1.97
36K	mm	165	100	245	60
	inch	6.5	3.64	9.65	2.36
48K	mm	165	100	287	60
	inch	6.5	3.64	11.30	2.36

**Outdoor unit dimension**



**General Features**

Wireless Remote with LCD Display

Follow Me

Sleep

Timer

Self Clean

46F Heating

Silent

**Extended Performance Data**