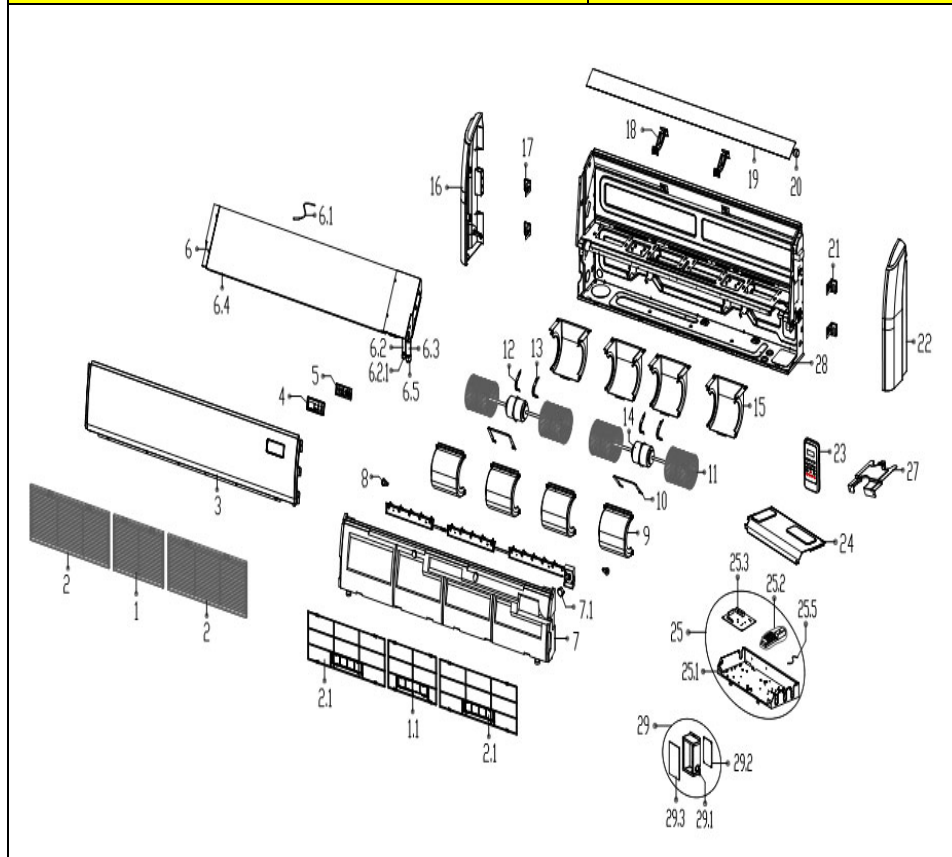


Sale Model :	FPA-48
Power Supply :	206-230V_60HZ



No.	Part Name	Quantity	PART #
1	Air inlet grille assembly II	1	201144790014
1.1	Air filter I	1	201144790023
2	Air inlet grille assembly I	2	201144790015
2.1	Air filter II	1	201144790024
3	Top cover assembly	1	201244790048
4	Display installation box	1	201144790016
5	Display board assembly	1	201344790040
6	Evaporator assembly	1	2015447A0040
6.1	Pipe temperature sensor assembly	1	202301300111
6.1	Pipe temperature sensor assembly	1	202301300804
6.2	Input pipe assembly	1	201644790189
6.2.1	Copper nut	1	201600320001
6.3	Output pipe assembly	1	201644790192
6.4	Evaporator	1	2015447A0030
6.5	Copper nut	1	201600320003
7	Water collector	1	202244790001
7.1	Louver motor	1	11002010000546
8	Insulated axis	2	201132590888
9	Volute shell (above)	4	201144790030
10	Fan motor fixing board	2	201252490002
11	Centrifugal fan	4	201100100870

12	Fan motor axes clamp (right)	2	201280200006
13	Fan motor axes clamp (left)	2	201280200005
14	Asynchronous motor	2	202400300070
15	Volute shell (below)	4	201144790029
16	Right cover	1	201144790017
17	Right hook	2	201244790033
18	Supporter of louver	2	201144790018
19	Louver	1	201144790006
20	Louver motor	1	202400200162
21	Left hook	2	201244790034
22	Left cover	1	201144790019
23	Remote controller	1	2033550A9167
24	Cover of electronic control box	1	201244490055
25	Electronic control box assembly	1	203344690029
25.1	Electronic control box	1	201244790050
25.2	Wire joint	1	202301400488
25.2	Wire joint	1	202301450119
25.3	Main control board assembly	1	201344690021
25.5	ambient temperature sensor assemb	1	202301310072
27	Pipe clamp board	1	201244790047
28	Chassis assembly	1	12222700000228
29	Electronic control box assembly	2	203319900796
29.1	Electronic control box	1	201270590340
29.2	Inverter control board assembly	1	201319903060
29.3	Radiator	1	202301900138