

10 SEER TOP-DIACHARGE WITH AIR HANDLER UNIT TECHNICAL MANUAL

Part 1	General Information	1
1.	Model Names of Indoor/Outdoor Units	2
2.	External Appearance	3
3.	Features.....	4
Part 2	Indoor Units	5
1.	Specifications.....	6
2.	Dimensions	7
3.	Service Space.....	8
4.	Wiring Diagrams	9
5.	The Specification of Wiring	10
6.	Field Wiring	11
7.	Exploded View	12
8.	Troubleshooting	13
Part 3	Outdoor Units	14
1.	Specification	15
2.	Dimensions	17
3.	Typical Installation.....	18
5.	Wiring Diagrams	19
6.	Electric Characteristics	21
7.	Operation Limits.....	21
8.	Exploded View	22
9.	Sound Levels	25
Part 4	Installation	26
1.	Precaution on Installation	27
2.	Vacuum Dry and Leakage Checking	28
3.	Additional Refrigerant Charge	30
4.	Water Drainage.....	31
5.	Insulation Work	34
6.	Test Operation	36

R410A 60Hz Top-discharge Outdoor series

Part 1 General Information

1. Model Names of Indoor/Outdoor Units	2
2. External Appearance	3
3. Features	4

1. Model Names of Indoor/Outdoor Units

1.1 Indoor units

Model name	Dimension (W×H×D) / (mm)	Net/Gross weight (kg)	Power supply
Air-Handler units			
AHE36-1-C	460×774×520	37/39	208~230V/1Ph/60Hz
AHE60-1-C	500×1160×550	45/48	208~230V/1Ph/60Hz
AHE60-1-C	500×1160×550	45/48	208~230V/3Ph/60Hz

1.2 Outdoor Units

Model name	Dimension (W×D×H) (mm)	Net/Gross weight (kg)	Power supply
CCU36-410-C	554×554×633	58/61	208~230V/1Ph/60Hz
CCU60-410-C	740×740×835	74.5/79	208~230V/1Ph/60Hz
CCU60-410-C	740×740×835	77.5/82	208~230V/1Ph/60Hz
CCU60-410-3-C	740×740×835	71.5/76.5	208~230V/3Ph/60Hz

2. External Appearance

2.1 Indoor Units

Air-Handler units



36k Btu/h



60k Btu/h

2.2 Outdoor units



36k Btu/h

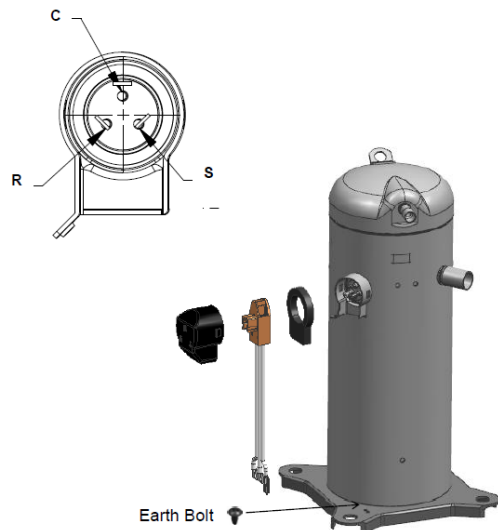


60k Btu/h

3. Features

3.1 Well-known compressor, LG & Copeland, Highly.

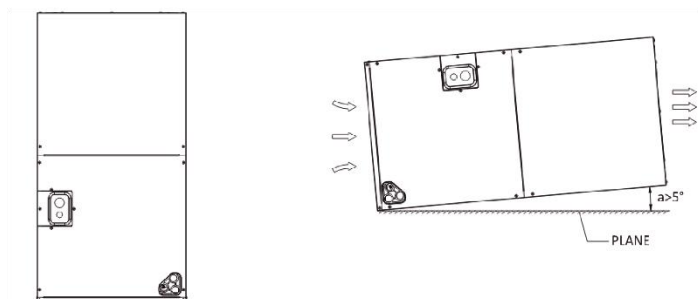
High efficiency rotary compressor for 36K model, and scroll compressor for 60K model.



4.2 Universal 24V communication connection for indoor and outdoor units control,

4.3 R410 environmental refrigerant, and it is matched with top-discharge unit and condensing unit.

4.4 Flexible installation for AHU, vertical and horizontal right installation is available.



4.5 Easy controlled by thermostat and compatible with other manufactor's products.

Part 2 Indoor Units

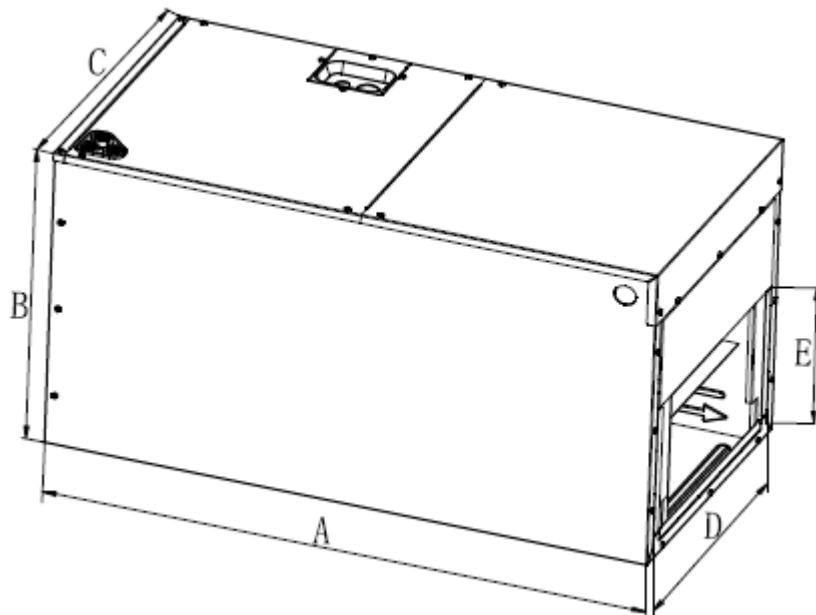
1. Specifications.....	6
2. Dimensions.....	7
3. Service Space	8
4. Wiring Diagrams	9
5. The Specification of Wiring.....	10
6. Field Wiring.....	11
7. Exploded View	12
8. Troubleshooting.....	13

1. Specifications

Model			AHE36-1-C	AHE60-1-C
Power supply		V/Ph/Hz	208-230V/1PH/60HZ	208-230V/1PH/60HZ
Cooling	Capacity	Btu/h	36000	60000
	Capacity	W	10500	16000
	Indoor Input	W	253	470
	Indoor Rated current	A	1.16	2.14
Indoor Max. input consumption		W	290	517
Indoor Max. current		A	1.33	2.34
Indoor coil	Number of row		2	3
	Fin spacing	mm	1.5	1.5
	Fin material		Hydrophilic Aluminium Fin	Hydrophilic Aluminium Fin
	Tube outside diameter	mm	Φ7	Φ7
	Tube material		Inner Screw	Inner Screw
	Coil length x height x width	mm	336*26.74*413 (X2)	378*40.11*443 (X2)
	Number of circuit		4	6
Indoor fan motor	Model		YDK130-6X	YDK250-6X-2
	Brand		Kangbao	Weiling
	Output	W	130	250
	Capacitor	μF	6	12
	Speed (Hi//Lo)	rpm	910/780	800/730
Indoor air flow		m³/h	1700	2500
Indoor noise level		dB(A)	51-56	51~57
Indoor dimension	Unit (WxHxD)	mm	460x774x520	500x970x550
	Packing (WxHxD)	mm	520x834x565	560x1030x595
Indoor weight	Net	kg	37	45
	Gross	kg	39	48
Operation temperature range		°C	16-32	16-32

2. Dimensions

AHE36-1-C AHE60-1-C

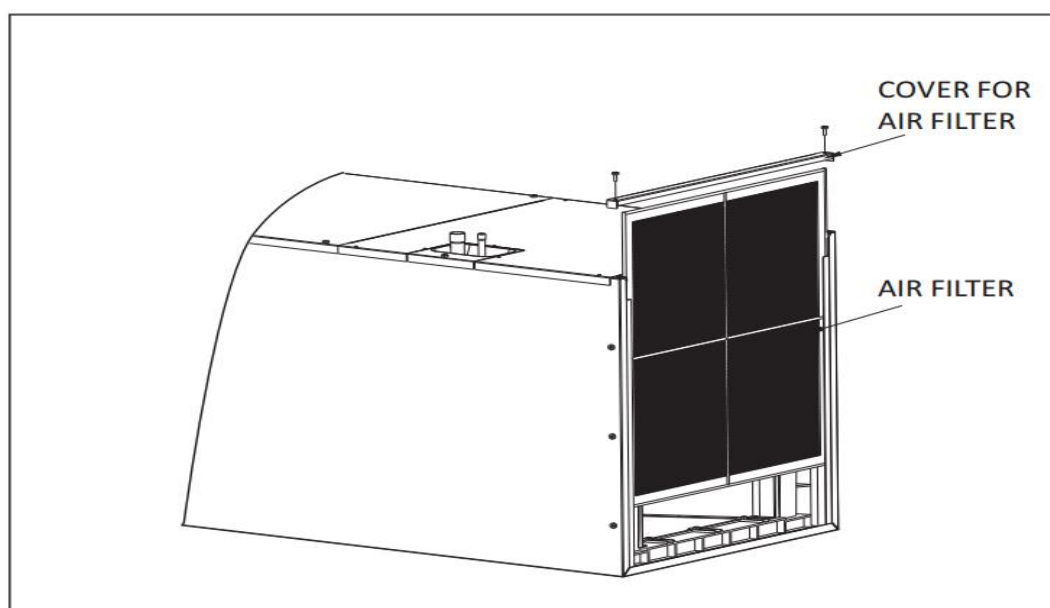
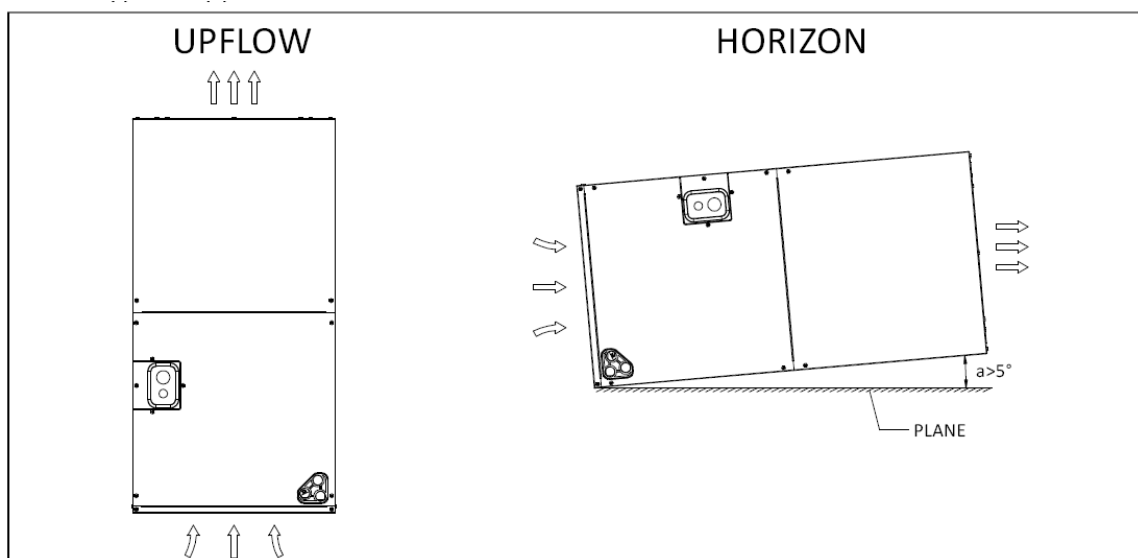


MODEL	Dimensions(mm)				
	A(Height)	B(Depth)	C(Width)	D	E
36	774	520	460	414	245
60	970 (1160)	550	500	454	266

3. Service Space

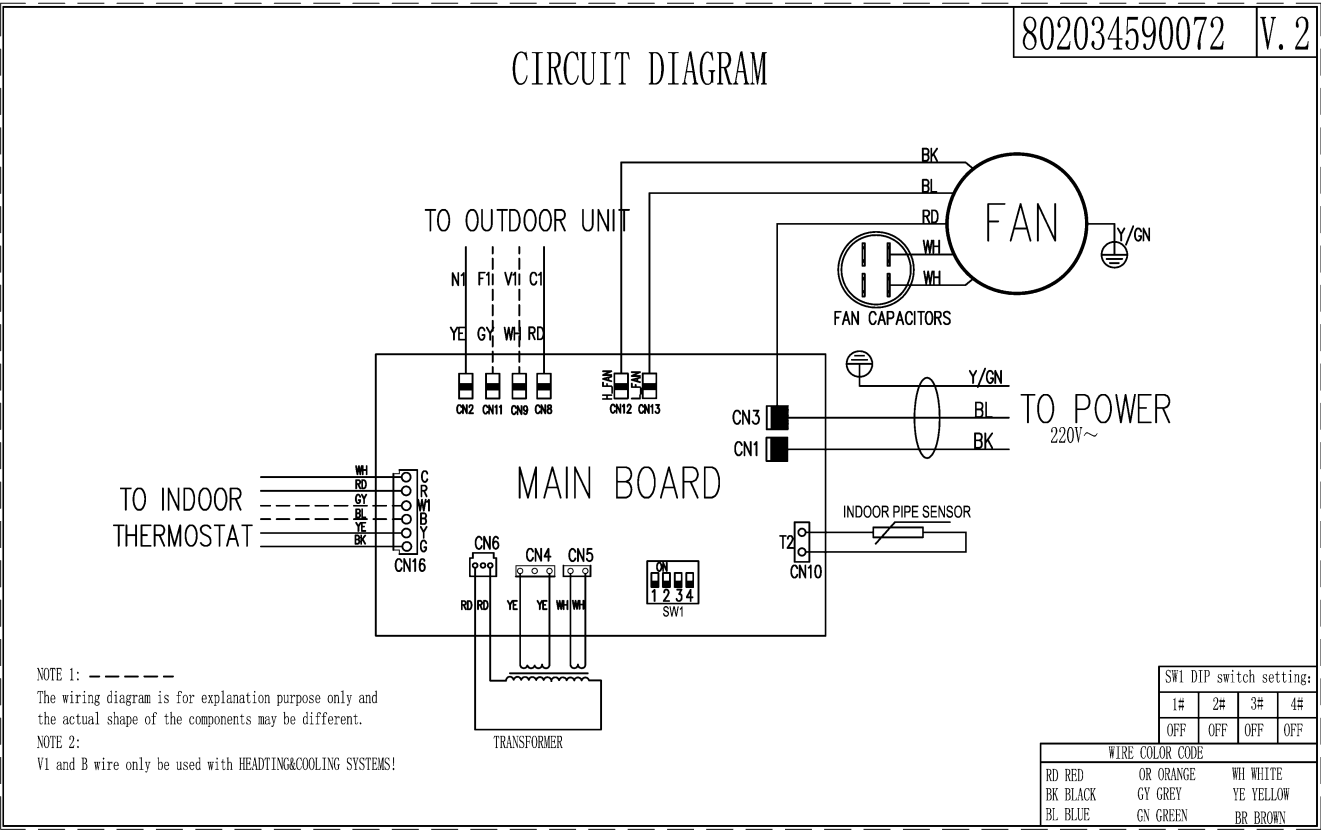
The air-handler unit should be installed in a location that meets the following requirements:
INSTALLATION NOTES: .

1. Up-flow discharge , the installation of plug and drain pipe is shown in the left figure.
2. Horizontal-right discharge , the installation of plug and drain pipe is shown in the right figure.
3. The seal-plugs are supplied as accessories , and be screwed tightly only with hand.



4. Wiring Diagrams

AHE36-1-C \ AHE60-1-C



5.The Specification of Wiring

Single-phase for cooling only type, 220V

Capacity(Btu/h)			36000 Btu/h	60000 Btu/h
Power		Indoor	Single	
			220-230V,60Hz 1PH	
		Outdoor	Single	
			220-230V,60Hz 1PH	
Input Current Fuse		Indoor unit(A)	5A	5A
Lines Gauge	Indoor Unit Power Line	Line Quantity	3	3
		Line Diameter(AWG)	18/1.0mm ²	18/1.0mm ²
	Outdoor Unit Power Line	Line Quantity	3	3
		Line Diameter(AWG)	12/4.0mm ²	10/6.0mm ²
	Outdoor-Indoor Signal Line	Line Quantity	2	2
		Line Diameter(AWG)	18/1.0mm ²	18/1.0mm ²
	Thermostat Signal Line	Line Quantity	4	4
		Line Diameter(AWG)	18/1.0mm ²	18/1.0mm ²

3-phase for cooling only type, 220V

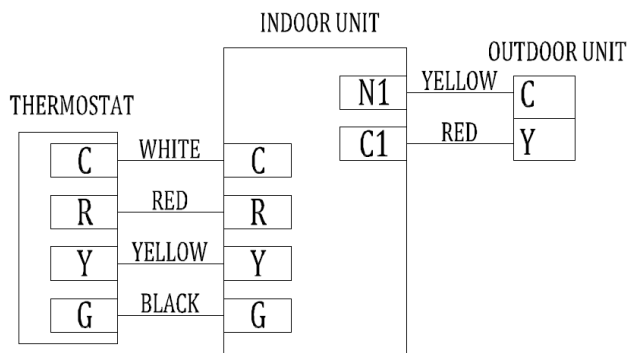
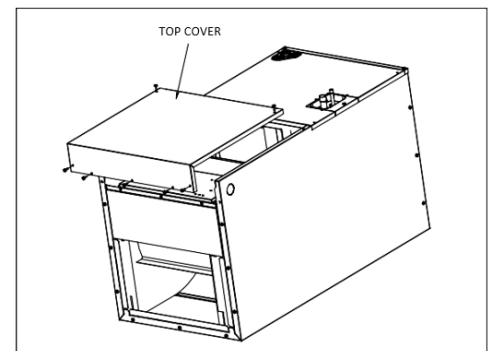
Capacity(Btu/h)		60000 Btu/h	
Power		Indoor	Single
			220-230V,60Hz 1PH\220-240,50Hz 1PH
		Outdoor	Three
			220-230V,60Hz 3PH
Input Current Fuse		Indoor unit(A)	5A
Lines Gauge	Indoor Unit Power Line	Line Quantity	3
		Line Diameter(AWG)	18/1.0mm ²
	Outdoor Unit Power Line	Line Quantity	4
		Line Diameter(AWG)	12/4.0mm ²
	Outdoor-Indoor Signal Line	Line Quantity	2
		Line Diameter(AWG)	18/1.0mm ²
	Thermostat Signal Line	Line Quantity	4
		Line Diameter(AWG)	18/1.0mm ²

6. Field Wiring

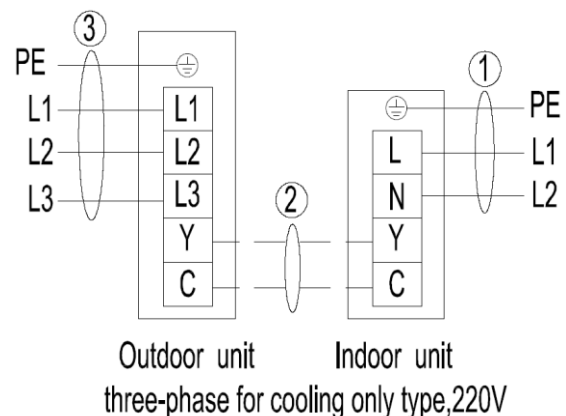
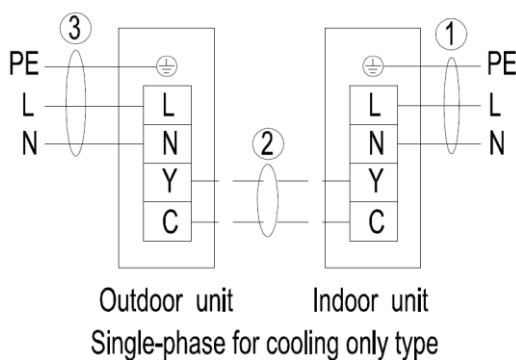
1. To avoid the electric shock, please link the air conditioner with the ground. The plug in the air conditioner has joined the ground wiring, please don't change it freely.
2. The power socket is used as the air conditioner specially.
3. Don't pull the power wiring hard.
4. When linking the air conditioner with the ground; observe the local rules.
5. If necessary, use the power fuse or the circuit, breaker or the corresponding scale ampere.

When installing or repair the air condition, relate to system wiring, please operating as follows:

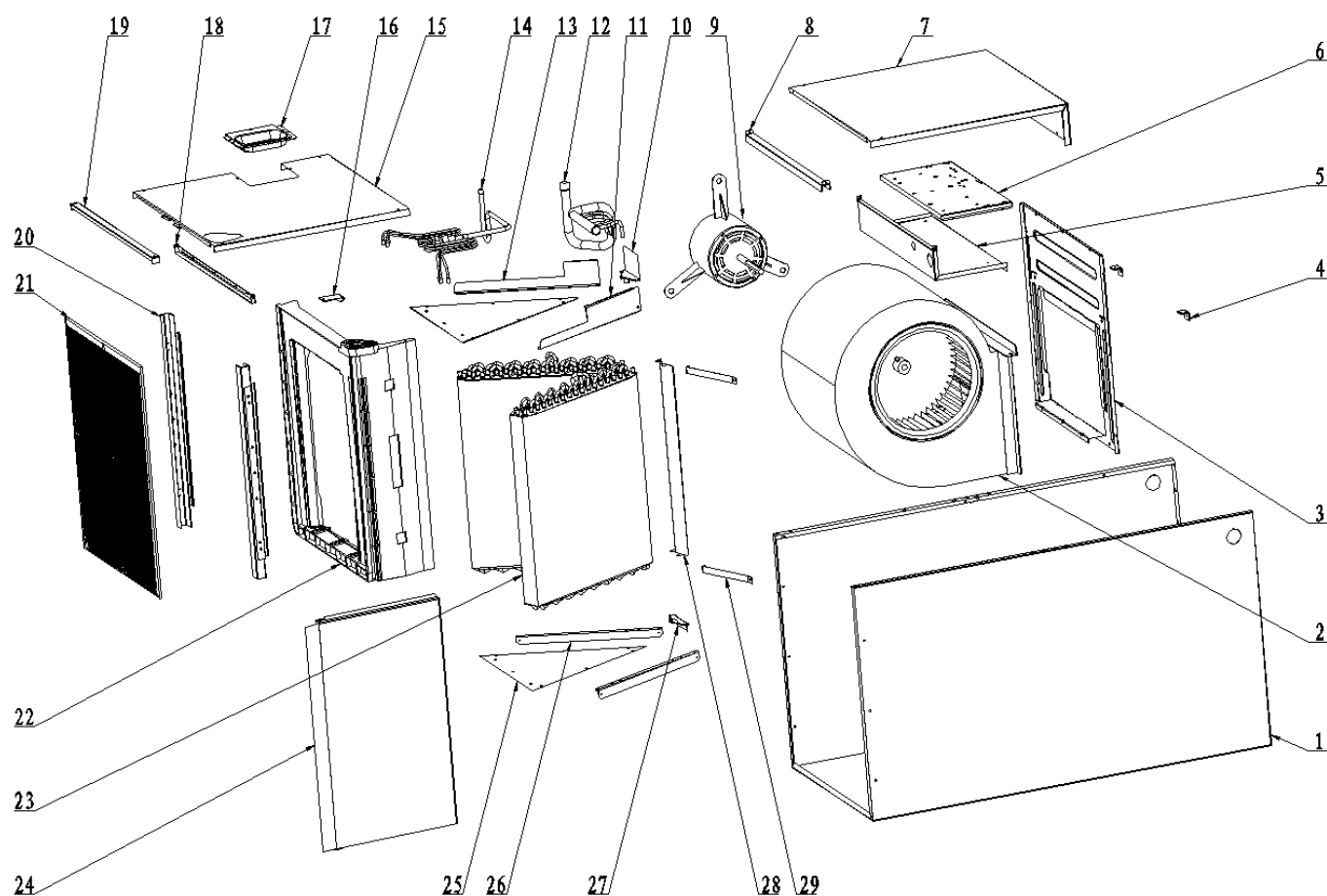
1. Tear down the seven bolts in the top cover, see in Figure below.
2. Hold the edge of the top condenser and extract out.
3. Install the top condenser in the reverse order of step 1 and 2.



INDOOR UNIT OUTPUT WITH 24VAC 1.5A



7. Exploded View



No.	Part Name	Qty	No.	Part Name	Qty
1	Chassis assembly	1	13	Evaporator Water Baffle #1	1
2	Right Volute Wind Wheel	1	14	Diverter Assembly	1
3	Fan Motor Fixing plate	1	15	Lower side plate assembly	1
4	Wind Wheel Fixed Block	2	16	Water pan fixed block	1
5	Electronic Control Fixing Plate Assy	1	17	Pipe Cover plate assembly	1
6	Electronic Control Components		18	Supporter	
6.1	Electronic Control Mounting Plate	1	19	Filter Cover plate	1
6.2	Main Control Board	1	20	Water pan supporter assembly	2
6.3	Transformer	1	21	Filter	1
6.4	Temperature Sensor	1	22	Water pan# 1	1
6.5	Fan Motor Capacitor	1	23	Evaporator	2
7	Upper side plate assembly	1	24	Water pan# 2	1
8	Middle Cross Beam Assembly	1	25	Evaporator Baffle	2
9	Indoor Motor	1	26	Evaporator Water Baffle #1	2
10	Evaporator Fixing Plate #2	1	27	Evaporator Fixing Plate #1	1
11	Evaporator Water Baffle #2	1	28	Evaporator Junction Plate	1
12	Air header Assembly	1	29	Water pan brace	1

8. Troubleshooting

Indoor unit Fault code displayed

Fault Description	4LED fault indication	Digital display	Wired remote display
Three-phase power phase sequence fault		E0	E0
Indoor and outdoor unit communication failure	Timing lights flash	E1	E1
Temperature sensor (T1) fault	Running lights flash	E2	E2
Pipe temperature sensor in the evaporator (T2) fault	Running lights flash	E3	E3
Pipe temperature sensor in the evaporator (T2B) fault	Running lights flash	E4	E4
Outdoor unit failure	Warning lights flash slowly	E5	E5
The indoor unit EEPROM fault	Defrost lights flash slowly	E7	E7
Water over protection	Warning lights flash	EE	EE
Indoor unit with line controller communication failure		E9	E9
Note: The flash frequency for each of the above indicator is 2.5Hz, slow flashing frequency is 1Hz			

Part 3 Outdoor Units

1. Specifications	15
2. Dimensions	17
3. Typical Installation.....	18
4. Wiring Diagrams.....	19
5. Electric Characteristics	21
6. Operation Limits.....	21
7. Exploded View	22
8. Sound Levels.....	25

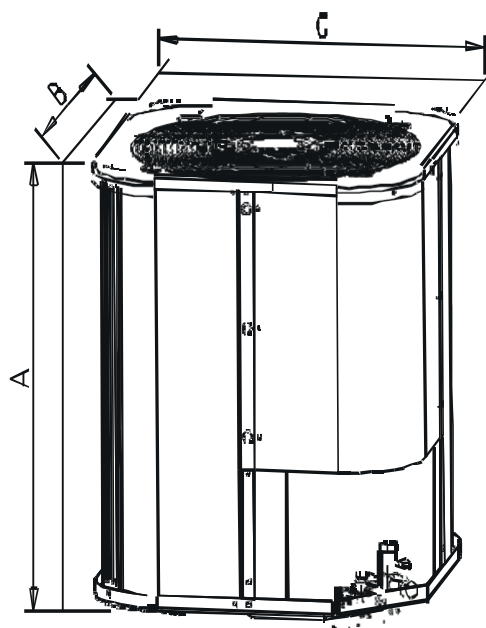
1.Specification

Model			CCU36-410-C	CCU60-410-C
Outdoor power supply		V/Ph/Hz	208-230V/1PH/60Hz	208-230V/1PH/60HZ
Cooling	Capacity	Btu/h	36000	60000
		KW	10.5	16
	Outdoor Input	W	3600	5650
	Outdoor Rated current	A	16.67	25.76
Outdoor Max. input consumption		W	4630	7650
Outdoor Max. current		A	23.9	39.18
Compressor	Model		ATH336UN-C9EU	ABT054KAA
	Brand		Shanghai Hitachi	LG
	Type		rotary	scroll
	Capacity	W	9900	15815
	Input	W	3300	4820
	Rated current(RLA)	A	16.3	21.5
	Locked rotor Amp(LRA)	A	/	120
	Thermal protector	uf	80	internal
	Refrigerant oil	ml	880	1360
Outdoor fan motor	Model		YDK-160-6P2	YDK-230-6P2
	Output	W	160	230
	Capacitor	μF	6	12
	Speed	rpm	1100	1095
Outdoor coil	Number of row		2	1
	Fin spacing	mm	1.4	1.4
	Fin material		Aluminium Fin	Aluminium Fin
	Tube outside diameter	mm	Φ7	Φ7
	Tube material		Inner Grooved	Inner Grooved
	Coil length x height x width	mm	1397×588×26.76	2148×798×13.37
	Number of circuit		2	5
Outdoor noise level		dB(A)	60	65
Outdoor dimension	Unit (WxHxD)	mm	554×554×675	740×740×835
	Packing (WxHxD)	mm	575×575×690	760×760×875
Outdoor weight	Net	kg	58.3	74.5
	Gross	kg	61.1	79
Refrigerant	Type		R410A	R410A
	Charge	g	2200	2100
Refrigerant pipe	Liquid side	mm	Φ9.52	Φ9.52
	Gas side	mm	Φ15.88	Φ19.05
	Max. refrigerant pipe length	m	20	20
	Max. difference in level	m	10	10
Design pressure		MPa	4.0/1.2	4.0/1.2
Max pressure		MPa	4.5	4.5
Ambient temperature range		℃	18~43	18~43

Model		CCU60-410-3-C	
Code		Outdoor Code	821034400026
Outdoor power supply		V/Ph/Hz	208-230V/3PH/60Hz
Cooling	Capacity	Btu/h	60000
		KW	16
	Outdoor Input	W	5675
	Outdoor Rated current	A	17.46
Outdoor Max. input consumption		W	7440
Outdoor Max. current		A	24.97
Compressor	Model		ZP54KUE-TF5-52E
	Brand		Copland
	Type		scroll
	Capacity	W	15900
	Input	W	5140
	Rated current(RLA)	A	18.6
	Locked rotor Amp(LRA)	A	118.9
	Thermal protector	uf	internal
	Refrigerant oil	ml	1242
Outdoor fan motor	Model		YDK-230-6P2
	Output	W	230
	Capacitor	μF	12
	Speed	rpm	1095
Outdoor coil	Number of row		1
	Fin spacing	mm	1.4
	Fin material		Aluminium Fin
	Tube outside diameter	mm	Φ7
	Tube material		Inner Grooved
	Coil length x height x width	mm	2148×798×13.37
	Number of circuit		5
Outdoor noise level		dB(A)	65
Outdoor dimension	Unit (WxHxD)	mm	740×740×835
	Packing (WxHxD)	mm	760×760×875
Outdoor weight	Net	kg	71.5
	Gross	kg	76.5
Refrigerant	Type		R410A
	Charge	g	2550
Refrigerant pipe	Liquid side	mm	Φ9.52
	Gas side	mm	Φ19.05
	Max. refrigerant pipe length	m	20
	Max. difference in level	m	10
Design pressure		MPa	4.0/1.2
Max pressure		MPa	4.5
Ambient temperature range		°C	18~43

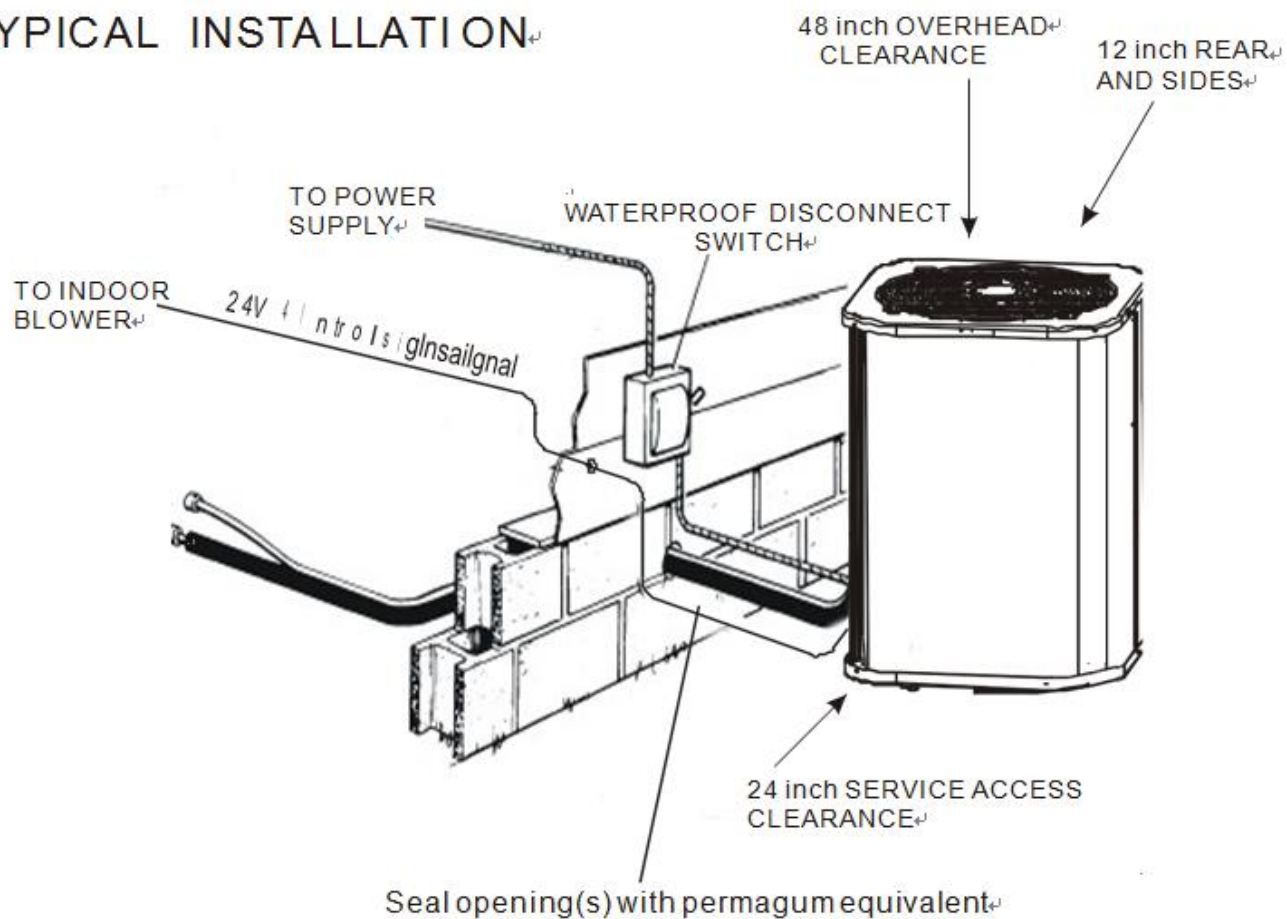
2.Dimensions

Unit Model	Dimensions(mm)			Refrigerant Connection Line Size(mm)		
	A	B	C	Liquid(φ)		Vapor(φ)
				LF	RF	
36K	690	575	575	9.52	12.7	19.05
60K	835	740	740	9.52	12.7	19.05



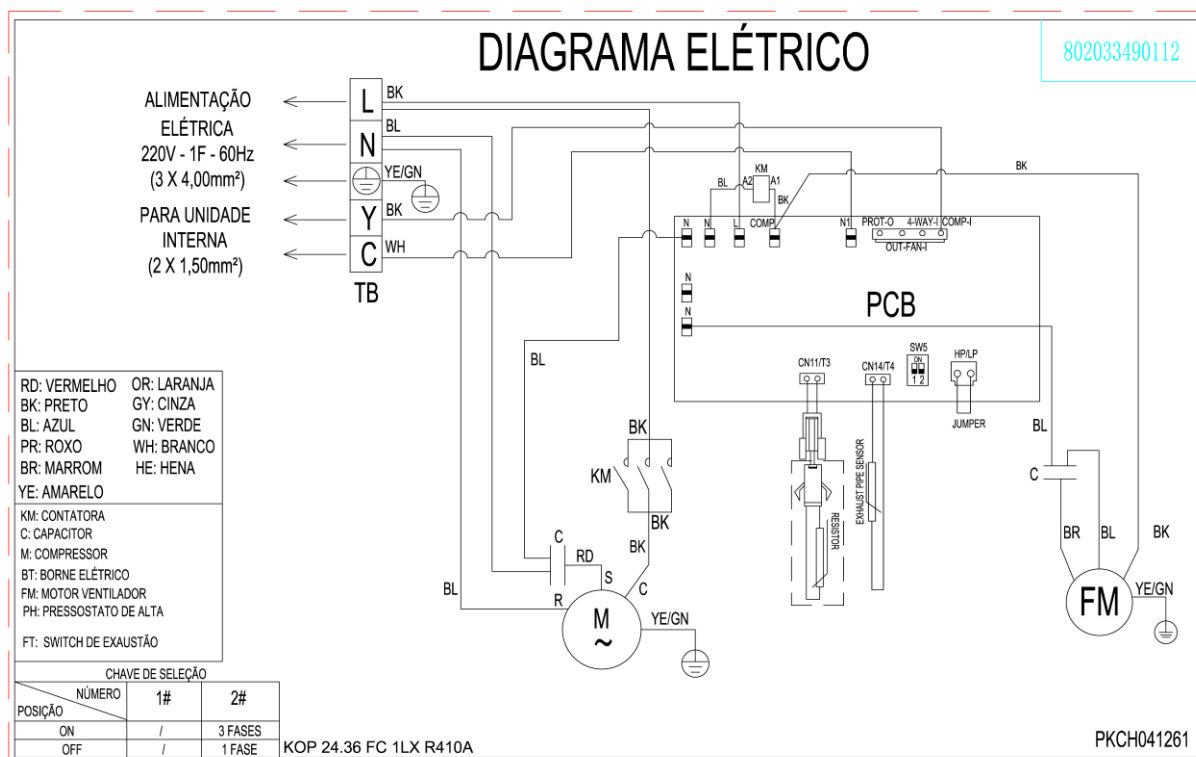
3. Typical Installation

TYPICAL INSTALLATION

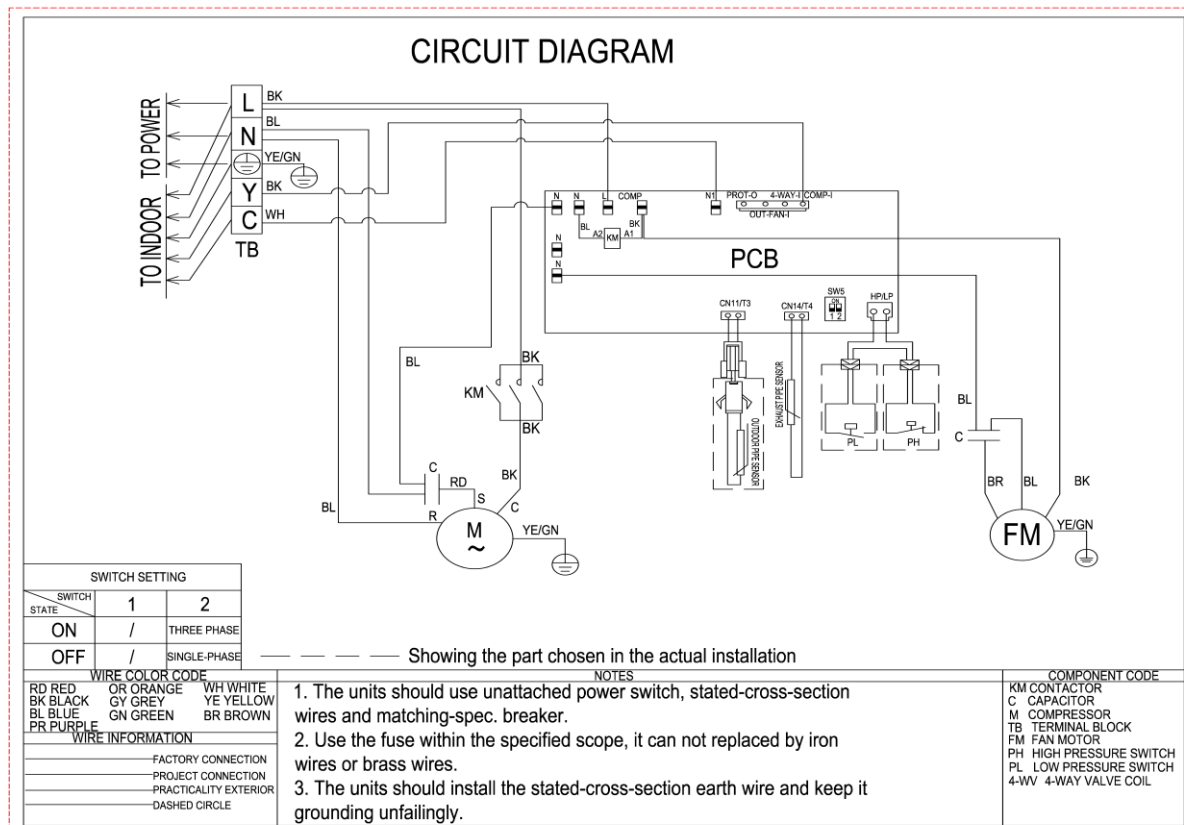


4. Wiring Diagrams

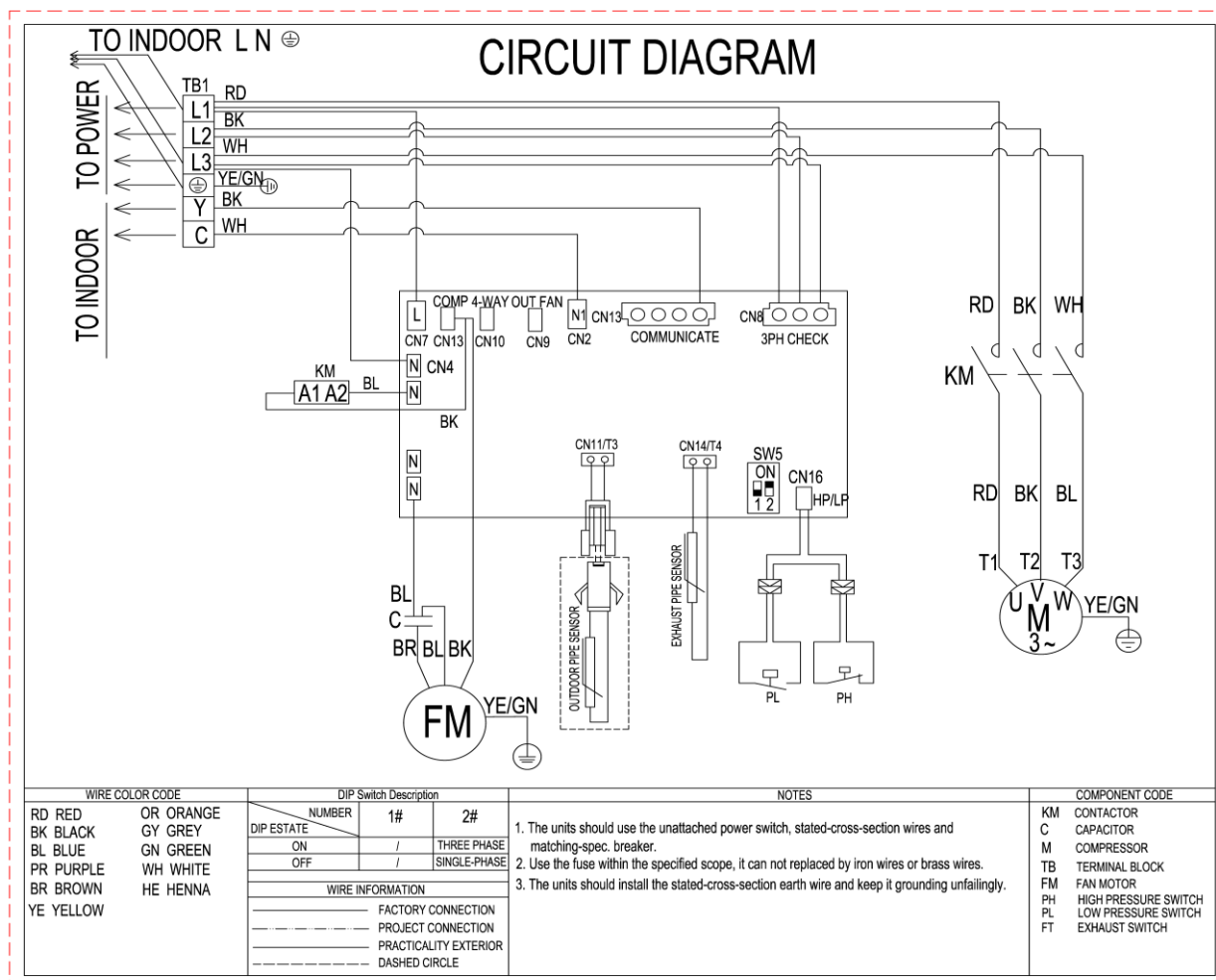
CCU36-410-C



CCU60-410-C



CCU60-410-3-C

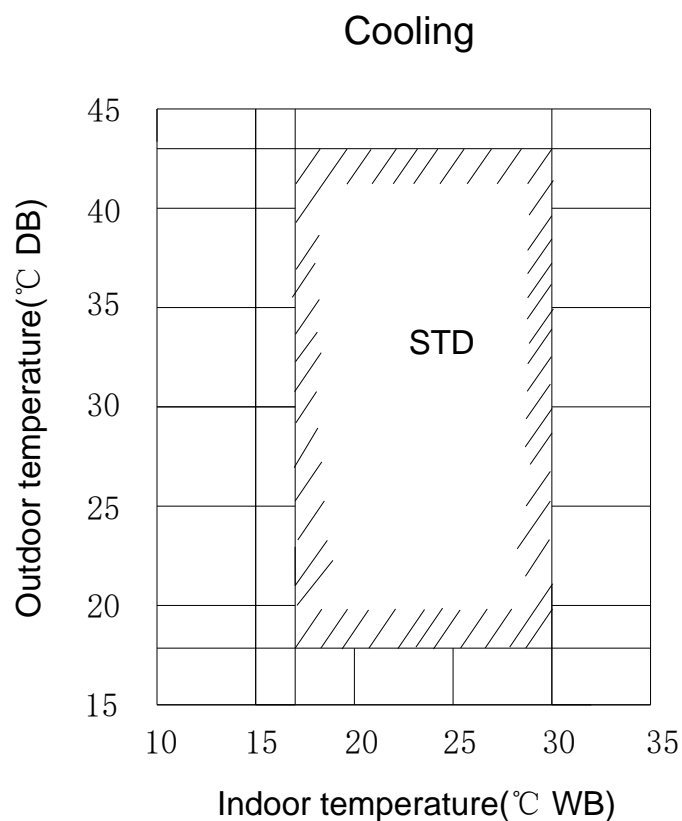


5. Electric Characteristics

Model	Outdoor Unit			
	Hz	Voltage	Min.	Max.
CCU36-410-C	60	208-230V	187V	244V
CCU60-410-C	60	208-230V	187V	244V
CCU60-410-3-C	60	208-230V	187V	244V

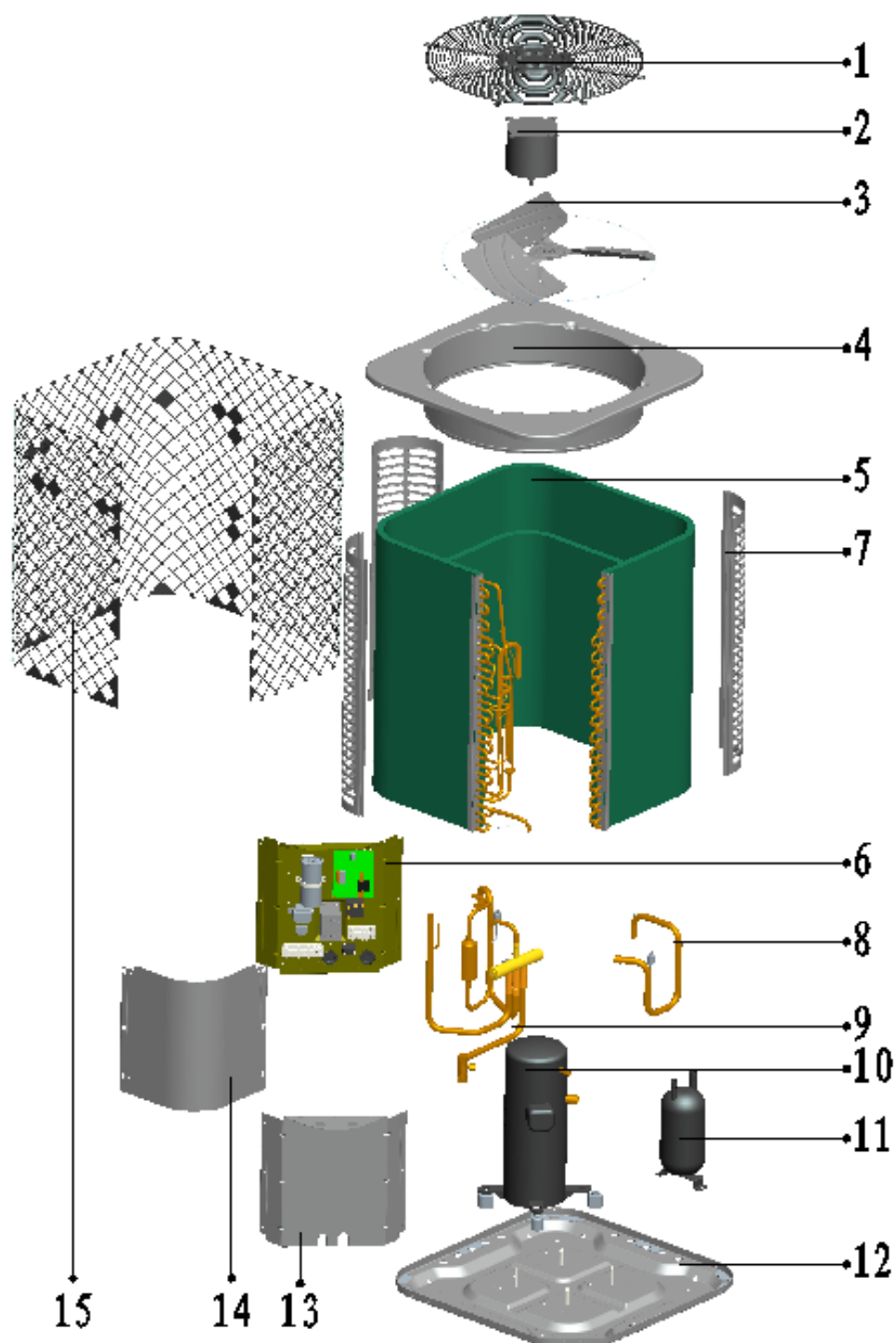
6. Operation Limits

Operation mode	Outdoor temperature(°C)	Room temperature(°C)
Cooling operation	18~43	17~30



7. Exploded View

CCU36-410-C / CCU60-410-C



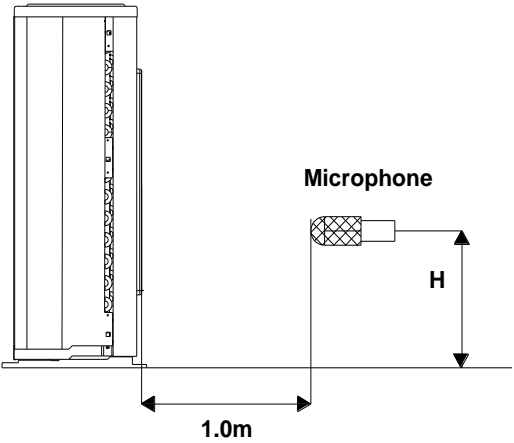
1	Top net	1
2	Uniaxial outdoor motor	1
3	Propeller fan	1
4	Top cover assembly	1
5	Condenser assembly	1
5.1	Condenser ssembly	1
5.2	Condenser input pipe assembly	1
5.3	Condenser output pipe assembly	1
5.4	Weld assembly for high pressure valve	1
5.4.1	Block valve body 2	1
6	Electronic components	1
6.1	Electric install board weld assembly	1
6.2	Electric waterproof box	2
6.3	Outdoor PC board assembly	1
6.4	Contactor	1
6.5	Exhaust temperature controller	1
6.6	Fan capacitor	1
6.7	Discharge temp sensor	1
6.8	Condenser temp sensor	1
6.9	Terminal board	1
6.10	Terminal board	1
6.11	Wire for 4-valve	1
7	Support board	3
8	Suction pipe weld assembly	1
8.1	Compressor suction pipe	1
10.2	Low-pressure switch	1
9	4-Ways valve weld assembly	1

9.1	4-Ways valve	1
9.2	4-Ways valve connected pipe 1	1
9.3	4-Ways valve connected pipe 2	1
9.4	4-Ways valve connected pipe 1	1
9.5	Block valve body (04)	1
9.6	Discharge pipe weld assembly	1
9.6.1	Compressor discharge pipe	1
9.6.2	Compressor discharge pipe 1	1
11.3	High-pressure switch	1
9.6.4	Probe pipe	1
9.6.5	Silencer	1
10	Compressor	1
11	Vapour-liquid separator	1
12	Chassis assembly	1
13	Under side panel	1
14	Top panel	1
15	Protection grill	1

8.Sound Levels

36000Btu/h

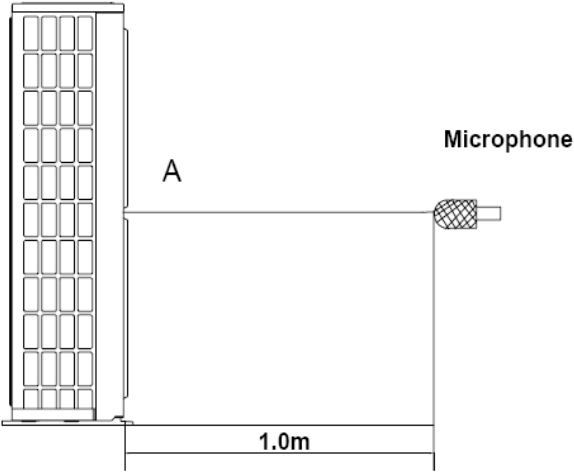
Outdoor Unit



Note: H= 0.5 × height of outdoor unit

60000Btu/h

Outdoor Unit



Note: The point A is in the middle of the whole outdoor panel.

Model	Noise level dB(A)
CCU36-410-C	60
CCU60-410-C	64
CCU60-410-3-C	64

Part 4 Installation

1. Precaution on Installation	27
2. Vacuum Dry and Leakage Checking	28
3. Additional Refrigerant Charge	30
4. Water Drainage.....	31
5. Insulation Work	34
6. Test Operation	36

1. Precaution on Installation

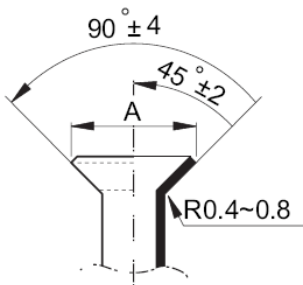
1.1. Measure the necessary length of the connecting pipe, and make it by the following way.

- a. Connect the indoor unit at first, then the outdoor unit.
Bend the tubing in proper way. Do not harm them.

CAUTIONS:

- Daub the surfaces of the flare pipe and the joint nuts with frozen oil, and wrench it for 3~4 rounds
- With hands before fasten the flare nuts.

Be sure to use two wrenches simultaneously when you connect or disconnect the pipes.

Pipe gauge	Tightening torque	Flare dimension A		Flare shape
		Min	Max	
Φ6.4	15~16N.m (153~163 kgf.cm)	8.3	8.7	
Φ9.5	25~26N.m (255~265 kgf.cm)	12.0	12.4	
Φ12.7	35~36N.m (357~367 kgf.cm)	15.4	15.8	
Φ15.9	45~47N.m (459~480 kgf.cm)	18.6	19.1	
Φ19.1	65~67N.m (663~684 kgf.cm)	22.9	23.3	

- b. The stop value of the outdoor unit should be closed absolutely (as original state). Every time you connect it, first loosen the nuts at the part of stop value, then connect the flare pipe immediately (in 5 minutes). If the nuts have been loosened for a long time, dusts and other impurities may enter the pipe system and may cause malfunction later. So please expel the air out of the pipe with refrigerant before connection.
- c. Expel the air after connecting the refrigerant pipe with the indoor unit and the outdoor unit. Then fasten the nuts at the repair-points.

1.2. Locate The Pipe

- a. Drill a hole in the wall (suitable just for the size of the wall conduit), then set on the fittings such as the wall conduit and its cover.
- b. Bind the connecting pipe and the cables together tightly with binding tapes. Do not let air in, which will cause water leakage by condensation.
- c. Pass the bound connecting pipe through the wall conduit from outside. Be careful of the pipe allocation to do no damage to the tubing.

1.3. Connect the pipes.

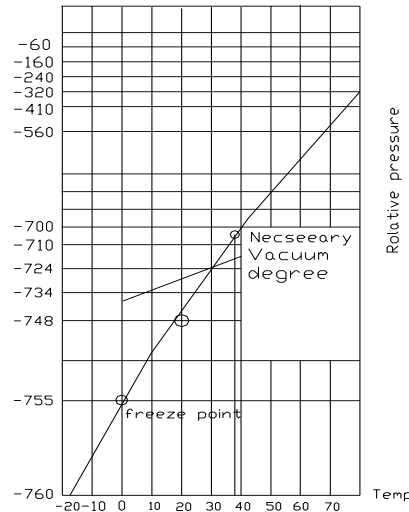
1.4. Then, open the stem of stop values of the outdoor unit to make the refrigerant pipe connecting the indoor unit with the outdoor unit in fluent flow.

1.5. Be sure of no leakage by checking it with leak detector or soap water.

1.6. Cover the joint of the connecting pipe to the indoor unit with the soundproof / insulating sheath (fittings), and bind it well with the tapes to prevent leakage.

2. Vacuum Dry and Leakage Checking

2.1 Vacuum Dry: use vacuum pump to change the moisture (liquid) into steam (gas) in the pipe and discharge it out of the pipe to make the pipe dry. Under one atmospheric pressure, the boiling point of water (steam temperature) is 100°C. Use vacuum pump to make the pressure in the pipe near vacuum state, the boiling point of water falls relatively. When it falls under outdoor temperature, the moisture in the pipe will be vaporized.

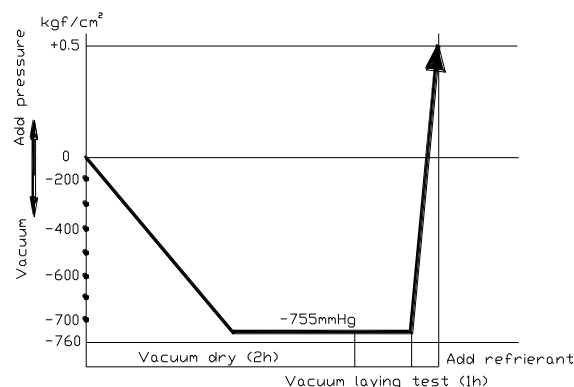


2.2 Vacuum dry procedure

There are two methods of vacuum dry due to different construction environment: common vacuum dry, special vacuum dry.

①. Common vacuum dry procedure

- Vacuum dry (for the first time)---connect the all-purpose detector to the inlet of liquid pipe and gas pipe, and run the vacuum pump more than two hours (the vacuum pump should be below -755mmHg)
- If the pump can't achieve below -755mmHg after pumping 2 hours, moisture or leakage point will still exist in the pipe. At this time, it should be pumped 1 hour more.
- If the pump can't achieve -755mmHg after pumping 3 hours, please check if there are some leakage points.
- Vacuum placement test: place 1 hour when it achieves -755mmHg, pass if the vacuum watch shows no rising. If it rises, it shows there's moisture or leakage point.
- Vacuuming from liquid pipe and gas pipe at the same time.
- Sketch map of common vacuum dry procedure.



②. Special vacuum dry procedure

- This vacuum dry method is used in the following conditions:
- There's moisture when flushing the refrigerant pipe.
- Rainwater may enter into the pipe.
- Vacuum dry for the first time 2h pumping

③. Vacuum destroy for the second time Fill nitrogen to 0.5Kgf/cm²

R410A 60Hz Top-discharge Outdoor Series Technical Manual

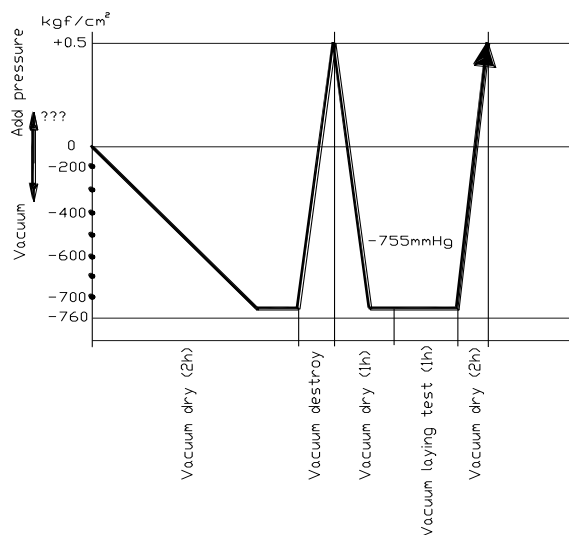
Because nitrogen is for drying gas, it has vacuum drying effect during vacuum destroy. But if the moisture is too much, this method can't dry thoroughly. So, please pay more attention to prevent water entering and forming condensation water.

④. Vacuum dry for the second time.....1h pumping

Determinant: Pass if achieving below -755mmHg. If -755mmHg can't be achieved in 2h, repeat procedure ③ and ④.

⑤. Vacuum placing test 1h

⑥. Sketch map of special vacuum dry procedure



3.Additional Refrigerant Charge

Caution

- Refrigerant cannot be charged until field wiring has been completed.
- Refrigerant may only be charged after performing the leak test and the vacuum pumping.
- When charging a system, care shall be taken that its maximum permissible charge is never exceeded, in view of the danger of liquid hammer.
- Charging with an unsuitable substance may cause explosions and accidents, so always ensure that the appropriate refrigerant is charged.
- Refrigerant containers shall be opened slowly.
- Always use protective gloves and protect your eyes when charging refrigerant.

The outdoor unit is factory charged with refrigerant. Calculate the added refrigerant according to the diameter and the length of the liquid side pipe of the outdoor unit/indoor unit

R(g) L(m) D(mm)	φ6.4	Φ9.5	Φ12.7
Less than 5m (One-way)	—	—	—
Added Refrigerant When Over 5m(One-way)	30g/m×(L-5)	65g/m×(L-5)	120g/m×(L-5)

Remark:

R (g): Additional refrigerant to be charged

L (m): The length of the refrigerant pipe (one-way)

D (mm): Liquid side piping diameter

4. Water Drainage

4.1 Gradient and Supporting

4.1.1 Keep the drainpipe sloping downwards at a gradient of at least 1/100. Keep the drainpipe as short as possible and eliminate the air bubble.

4.1.2 The horizontal drainpipe should be short. When the pipe is too long, a prop stand must be installed to keep the gradient of 1/100 and prevent bending. Refer to the following table for the specification of the prop stand.

	Diameter	Distance between the prop stands
Hard PVC pipe	25~40mm	1~1.5m

4.1.3. Precautions

- ① The diameter of drainpipe should meet the drainage requirement at least.
- ② The drainpipe should be heat-insulated to prevent atomization.
- ③ Drainpipe should be installed before installing indoor unit. After powering on, there is some water in water-receiver plate. Please check if the drain pump can operate correctly.
- ④ All connection should be firm.
- ⑤ Wipe color on PVC pipe to note connection.
- ⑥ Climbing, horizontal and bending conditions are prohibited.
- ⑦ The dimension of drainpipe can't less than the connecting dimension of indoor drainpipe.
- ⑧ Heat-insulation should be done well to prevent condensation.
- ⑨ Indoor units with different drainage type can't share one convergent drainpipe.

4.2 Drainpipe Trap

4.2.1. If the pressure at the connection of the drainpipe is negative, it needs to design drainpipe trap.

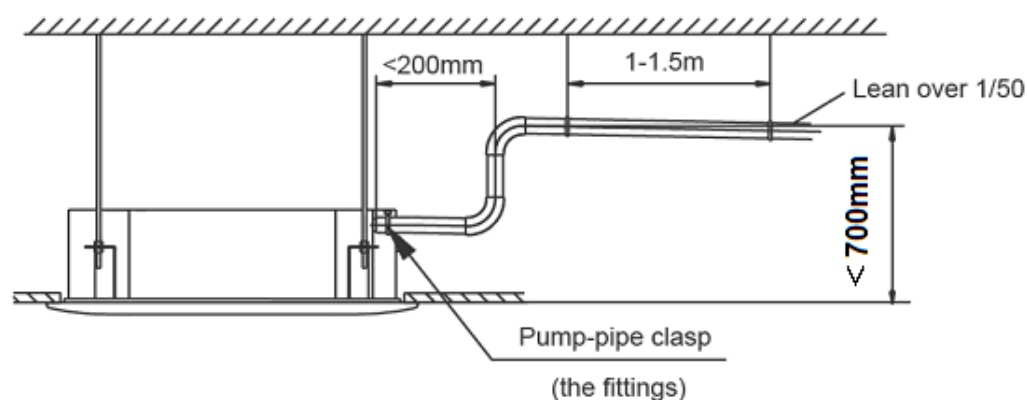
4.2.2. Every indoor unit needs one drainpipe trap.

4.2.3. A plug should be designed to do cleaning.

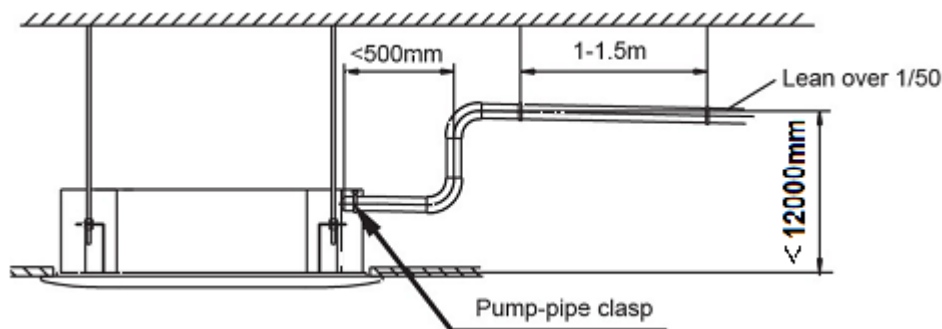


4.3 Upwards drainage (drain pump)

Ceiling cassette (compact)



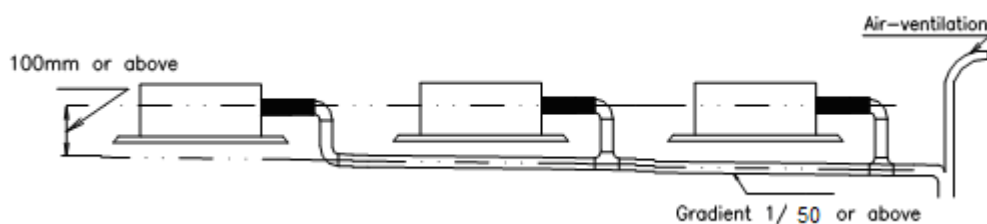
Ceiling cassette



4.4 Convergent drainage

4.4.1. The number of indoor units should be as small as possible to prevent the traverse main pipe overlong.

4.4.2. Indoor unit with drain pump and indoor unit without drain pump should be in different drainage system.



4.4.3. Selecting the diameter

Number of connecting indoor units → Calculate drainage volume → Select the diameter

Calculate allowed volume = Total cooling capacity of indoor units(HP) × 2 (l/ hr)

	Allowed volume(lean 1/50) (l/ hr)	I.D. (mm)	Thick
Hard PVC	$\sim \leq 14$	$\varnothing 25$	3.0
Hard PVC	$14 < \sim \leq 88$	$\varnothing 30$	3.5
Hard PVC	$88 < \sim \leq 334$	$\varnothing 40$	4.0
Hard PVC	$175 < \sim \leq 334$	$\varnothing 50$	4.5
Hard PVC	$334 < \sim$	$\varnothing 80$	6.0

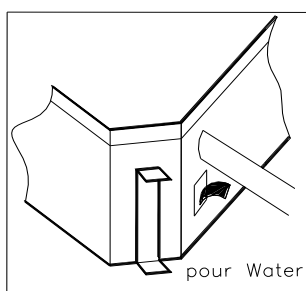
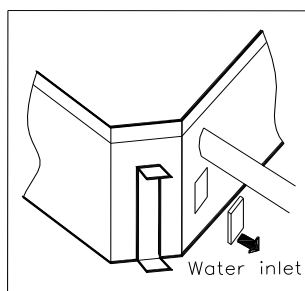
4.5 Drainage test

4.5.1 Drainage without drain pump

After finishing drainpipe installation, pour some water into the water receiver plate to check if the water flows smoothly.

4.5.2 Drainage with drain pump

- ① Poke the Water Level Switch, remove the cover, use water pipe to pour 2000ml water into the water receipt plate through the water inlet.



- ② Turn on the power to Cooling operation. Check the pump's operation and switch on the Water Level Switch. Check the pump's sound and look into the transparent hard pipe in the outlet at the same time to check if the water can discharge normally.

③ Stop the air conditioner running, turn off the power, and put back the cover.

- Stop the air conditioner. After 3 minutes, check if it has abnormality. If the collocation of drainpipes is illogical, the water will flow back overfull, which will cause the alarm lamp flashes, even overflow from the water receipt plate.
- Keep on pouring water until it gives an alarm signal for high water level, check if the pump drains water at once. If the water level can't fall below the alarmed water level after 3 minutes, the air conditioner will stop. Turn off the power and drain the remained water, and then turn on the air conditioner.

Note: the drain stuff in the main water receipt plate is for maintenance. Stuff up the drain stuff to prevent water leakage.

5. Insulation Work

5.1 Insulation material and thickness

5.1.1. Insulation material

Insulation material should adopt the material which is able to endure the pipe's temperature: no less than 70°C in the high-pressure side, no less than 120°C in the low-pressure side (For the cooling type machine, no requirements at the low-pressure side.)

- ◆ Example: Heat pump type----Heat-resistant Polyethylene foam (withstand above 120°C)
Cooling only type----Polyethylene foam (withstand above 100°C)

5.1.2. Thickness choice for insulation material

Insulation material thickness is as follows:

	Pipe diameter (mm)	Adiabatic material thickness
Refrigerant pipe	Φ6.4—Φ25.4	10mm
	Φ28.6—Φ38.1	15mm
Drainage pipe	Inner diameter Φ20—Φ32	6mm

5.2 Refrigerant pipe insulation

5.2.1. Work Procedure

- ① Before laying the pipes, the non-jointing parts and non-connection parts should be heat insulated.
- ② When the gas proof test is eligible, the jointing area, expanding area and the flange area should be heat insulated

5.2.2. Insulation for non-jointing parts and non-connection parts

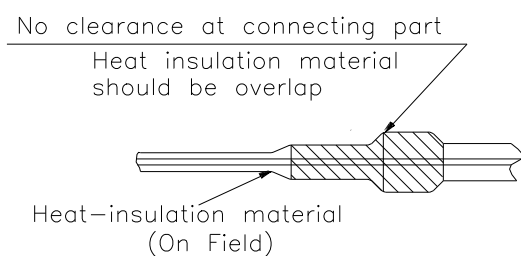
wrong	right	
Gas pipe and liquid pipe should not be put together to insulate	Insulate the gas pipe (cooling only)	Insulate the gas pipe and liquid pipe

For construction convenience, before laying pipes, use insulation material to insulate the pipes to be deal with, at the same time, at two ends of the pipe, remain some length not to be insulated, in order to be welded and check the leakage after laying the pipes.

5.2.3. Insulate for the jointing area, expanding area and the flange area

- ① Insulate for the jointing area, expanding area and the flange area should be done after checking leakage of the pipes

- ② Make sure there's no clearance in the joining part of the accessorial insulation material and local preparative insulation material.



5.3 Drainage pipe insulation

The connection part should be insulated, or else water will be condensing at the non-insulation part.

5.4 Note

5.4.1 The jointing area, expanding area and the flange area should be heat insulated after passing the pressure test

5.4.2 The gas and liquid pipe should be heat insulated individually, the connecting part should be heat insulated individually.

5.4.3 Use the attached heat-insulation material to insulate the pipe connections (pipes' tie-in ,expand nut) of the indoor unit

6. Test Operation

The indoor unit and outdoor unit are installed properly.

- Tubing and wiring are correctly completed.
- The refrigerant pipe system is leakage-checked.
- The drainage is unimpeded.
- The ground wiring is connected correctly.
- The length of the tubing and the added stow capacity of the refrigerant have been recorded.
- The power voltage fits the rated voltage of the air conditioner.
- There is no obstacle at the outlet and inlet of the outdoor and indoor units.
- The gas-side and liquid-side stop valves are both opened.
- The air conditioner is pre-heated by turning on the power.

(3) According to the user's requirement, install the remote controller when the remote controller's signal can reach the indoor unit smoothly.

(4) Test operation

Set the air conditioner under the mode of "COOLING" with the remote controller, and check the following points.

Indoor unit

- Whether the switch on the remote controller works well.
- Whether the buttons on the remote controller works well.
- Whether the air flow louver moves normally.
- Whether the room temperature is adjusted well.
- Whether the indicator lights normally.
- Whether the temporary buttons works well.
- Whether the drainage is normal.
- Whether there is vibration or abnormal noise during operation.

Outdoor unit

- Whether there is vibration or abnormal noise during operation.
- Whether the generated wind, noise, or condensed of by the air conditioner have influenced your neighborhood.
- Whether any of the refrigerant is leaked.