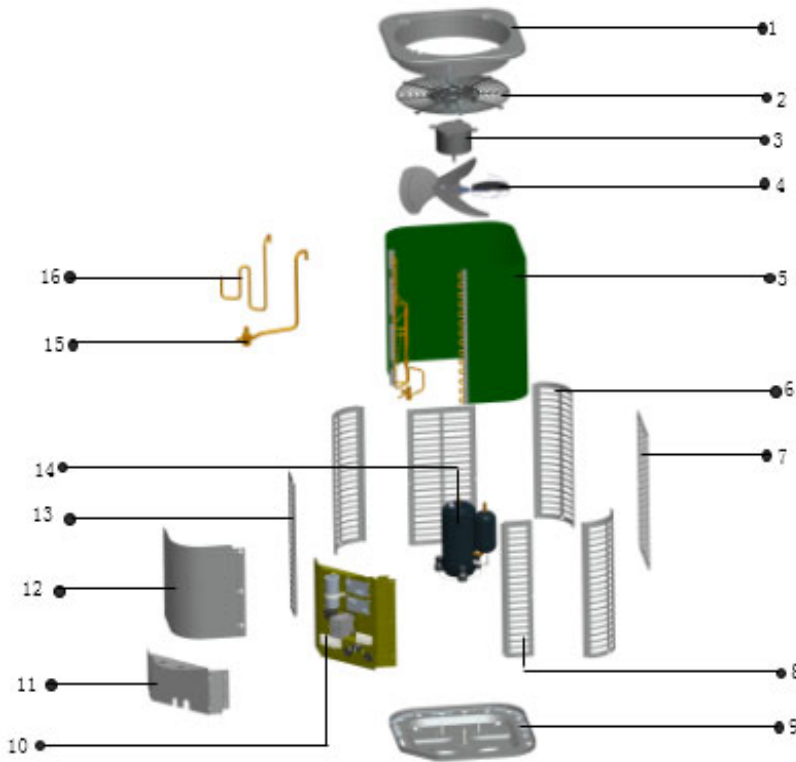
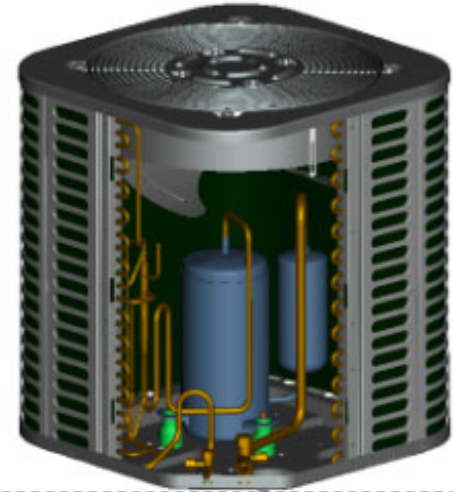
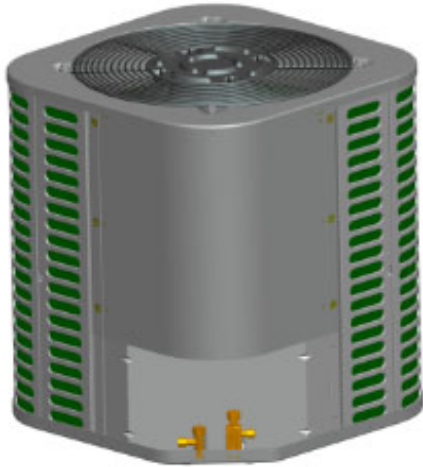


ComfortStar Model Number: CCU36-410-C

Power Supply: 208~230V/60Hz/1PH

ComfortStar®



No.	Part Name	Quantity	PART#	Remark
1	Top cover assembly	1	801224290022	
2	Top net cover	1	802924290002	
3	Indoor motor	1	802400400490	
4	Propeller fan	1	802919900009	
5	Condenser component	1	801524290039	
5.1	Condenser assembly	1	801524290040	
5.2	Inlet pipe for condenser	1	801623690059	
5.3	Outlet pipe for condenser	1	801623690062	
5.4	Weld assembly for high temperture valve	1	801623690066	

<b>5.4.1</b>	Block valve body	1	801600900069	
<b>6</b>	Supporting board	3	801224290030	
<b>7</b>	Rear separating board	2	801224290024	
<b>8</b>	Right separating board	1	801224290028	
<b>9</b>	Chassis assembly	1	801223290001	
<b>10</b>	E-part component	1	803324290019	
<b>10.1</b>	Weld assembly for e-part mounting plate	1	801225490097	
<b>10.2</b>	Waterproof box for e-part	2	801225490020	
<b>10.3</b>	Terminal	1	802425000001	
<b>10.4</b>	Contactora	1	802300100194	
<b>10.5</b>	Outlet	1	802300100090	
<b>10.6</b>	Compressor capacitor	1	802401000034	
<b>10.7</b>	Fan capacitor	1	802401100044	
<b>11</b>	Bottom separating board	1	801224290026	
<b>12</b>	Upper separating board	1	801225490041	
<b>13</b>	Left separating board	1	801224290034	
<b>14</b>	Compressor	1	801401100027	ASH264RN-C8DU
<b>15</b>	Low pressure valves welding components	1	801624290191	
<b>15.1</b>	Block valve body	1	801600900072	
<b>16</b>	Discharge pipe	1	801624290193	