

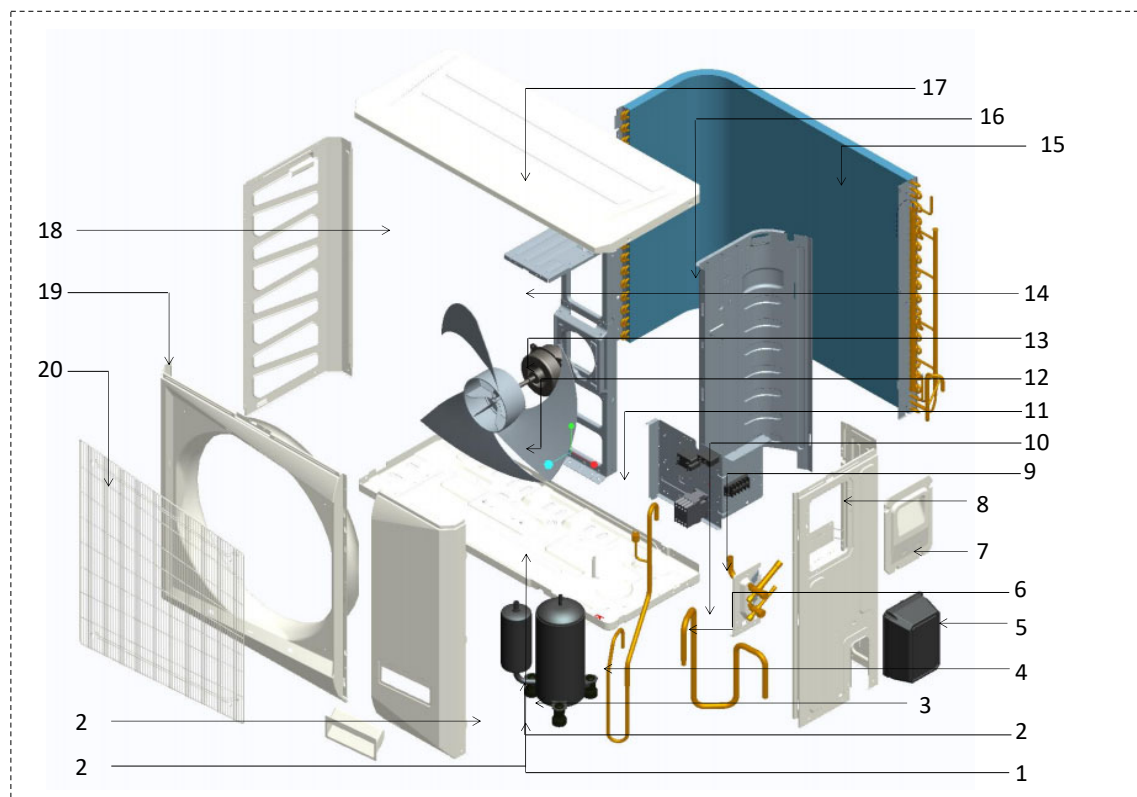
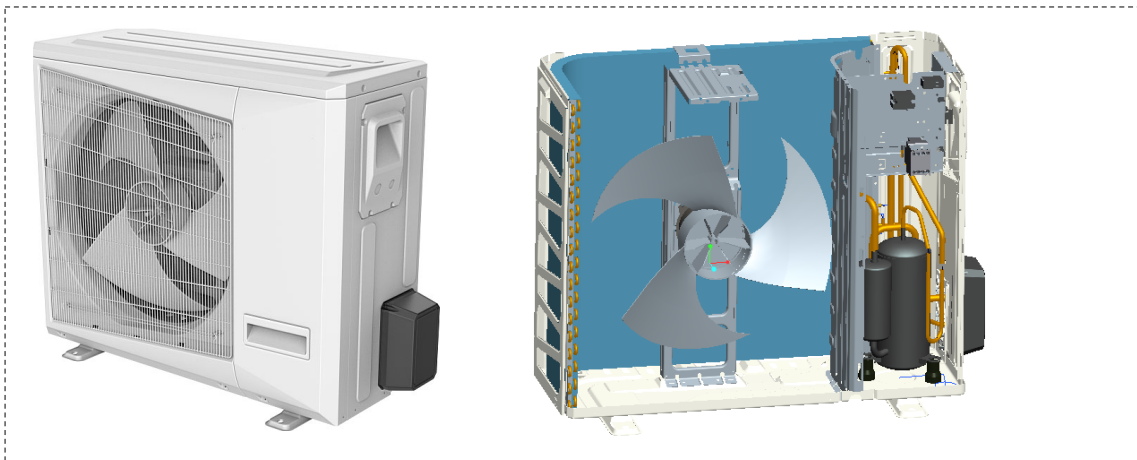
MODEL

CHD36CD-14

ComfortStar®

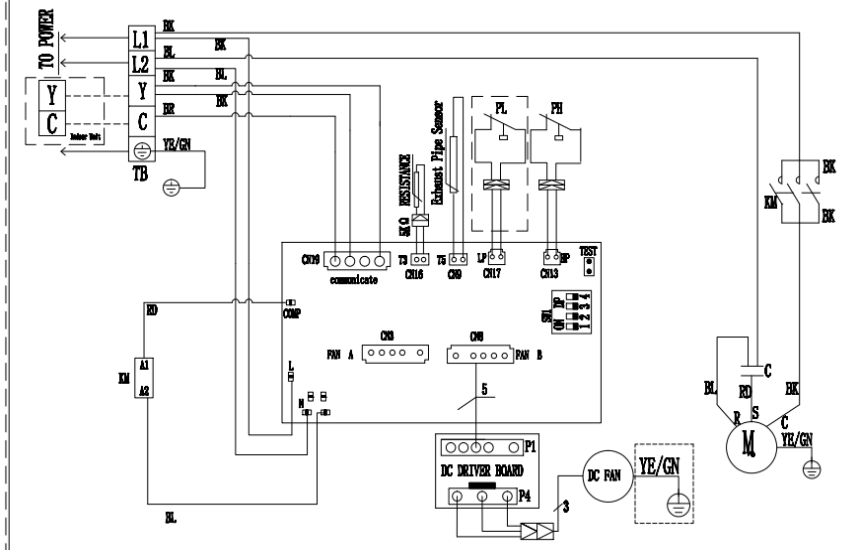
POWER

220/1/60



CIRCUIT DIAGRAM

80203349015W. 2



WIRE COLOR CODE		WVF Switch Description				WVF		COMPONENT CODE	
NO	DESCRIPTION	WVF	1#	2#	3#	4#	NO	DESCRIPTION	NO
RD	RED	OR	ORANGE					CM	CONTACTOR
BK	BLACK	GT	GREY				C	COMPRESSOR	
BL	BLUE	GN	GREEN				TS	TERMINAL BLOCK	
PR	PURPLE	WH	WHITE				PL	LOW PRESSURE SWITCH	
BR	BROWN	BS	BROWN				PH	HIGH PRESSURE SWITCH	
YS	YELLOW								

WIRE INFORMATION	
—————	FACTORY CONNECTION
—————	FRIGIDITY CONNECTION
—————	FRIGIDITY RETURN
—————	BASED CIRCUIT

1. The units should use the unattached power switch, stated-cross-section wires and matching-size breaker.
2. Use the fuse within the specified scope, it can not replaced by iron wires or brass wires.
3. The units should install the stated-cross-section earth wire and keep it grounding satisfactorily.

No.	Part Name	Quantity	Sale code	BOM code	Price(\$)	Remark
1	Chassis parts	1		801233490158	15.36	
2	Compressor	1		801401100042	180.26	
3	Discharge pipe assy	1		801633490339	7.56	
3.1	Discharge pipe of compressor #1	1		801633490340	1.76	
3.2	Discharge pipe of compressor #2	1		801633090075	2.65	
3.3	Pressure Switch	1		802300900041	3.20	
3.4	Probe Copper Tube	1		801602600198	0.12	
4	Air-return pipe of compressor	1		801633090078	7.79	
5	Cover of cut-off valve	1		801128200008	1.12	
6	Valve holder	1		801228200184	0.94	
7	Handle (Large size)	1		801232890064	2.06	
8	Right rear side panel part	1		801232890065	6.42	
9	Cut-off valve (DN8)	1		801600200014	6.05	
10	Cut-off valve (DN16)	1		801600200012	11.33	
11	Electric control box components	1		803333490052	95.99	
11.1	Electrical installation board	1		801232890059	2.04	
11.2	Main control board assy	1		801319900010	43.31	
11.3	Compressor capacitor	1		802401000046	5.14	
11.4	Fan motor drive board assy	1		802301700490	16.62	
11.5	Terminal	1		802401800117	1.97	
11.6	Capacitor clip	1		801200100012	0.16	
11.7	AC contactor	1		802300100251	22.80	
12	Axial-flow fan blade	1		801100300036	7.98	
13	Outdoor fan motor	1		802400300073	50.93	
14	Holder of fan motor	1		801242001501	6.54	
15	Condenser parts	1		801533090019	213.54	
16	Separating board	1		801232890066	3.91	
17	Top cover parts	1		801232890063	9.38	
18	Left side panel	1		801228200177	5.48	
19	Front panel	1		801228200179	11.64	
20	Net cover of air outlet(Mental)	1		802932890001	13.56	
21	Handle (Small size)	1		801132890002	0.54	
22	Right front side panel	1		801228200181	5.56	