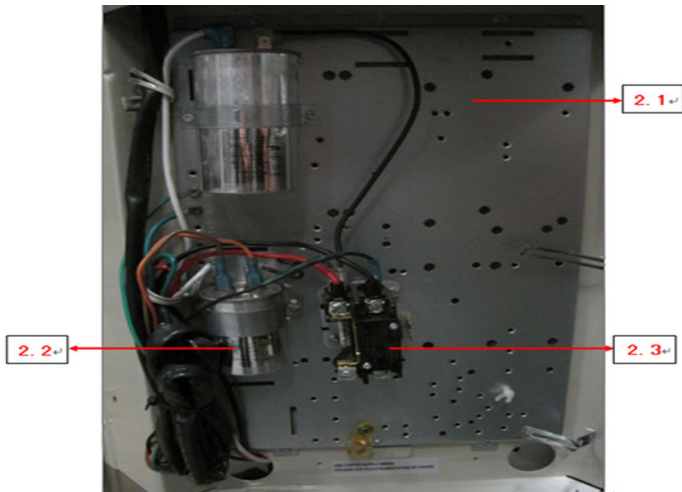
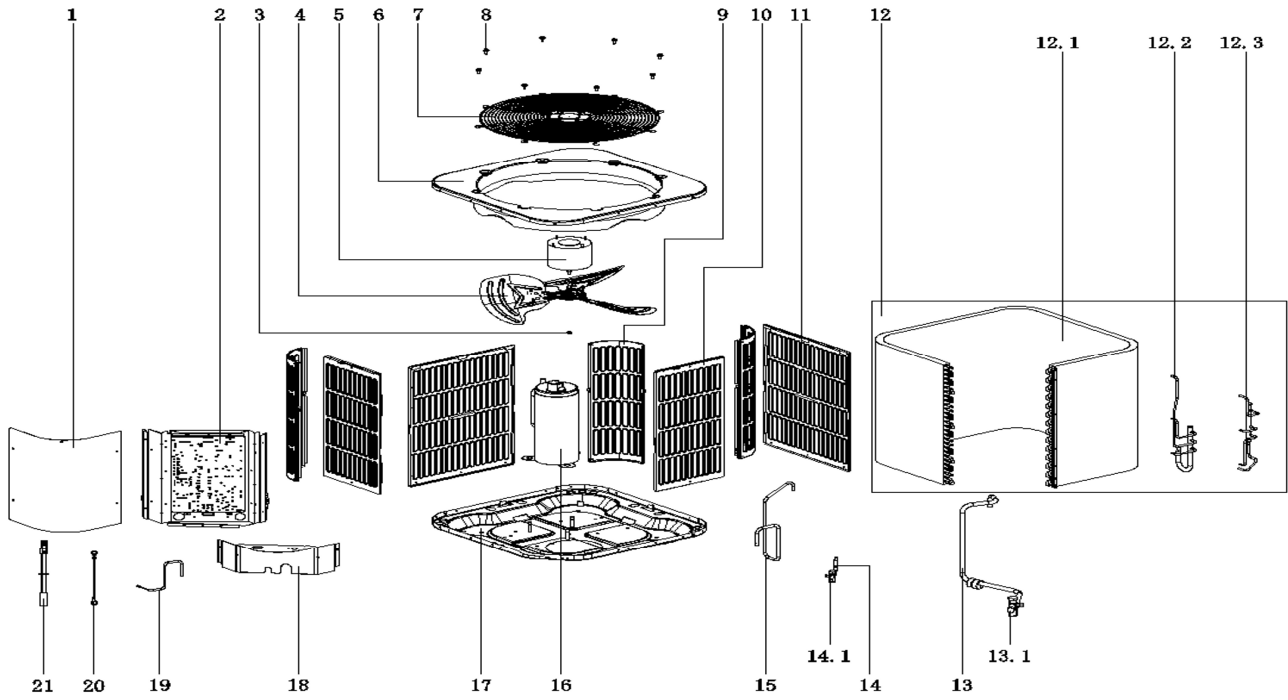


Market model:

MAH30-410



EX_ID	Part Name(EN)	Spare Parts Code	Qty.	Price	Remark2
1	Top air outlet cover	12223100000223	1		
2	E-part box assembly	17223000A02516	1		
2.1	Electric Installing Plate Combination	12223100000267	1		
2.2	Capacitor	17400103000135	1		
2.3	Capacitor	17400103000152	1		
2.4	AC contactor	11203502000032	1		
3	Nut	11301512000143	1		
4	Fan,3 blade count,aluminum alloy galvanized,D 23inch,60	12200104000032	1		
5	Motor, 208/230V 60Hz 1Ph, 1.0A,825RPM, ccw, PSC, D	11002012002120	1		
6	Top cover assembly	12223000001097	1		
7	Grille, top cover	12923000000028	1		
8	Stainless steel bolts	11301002000001	8		
9	Support Plate	12223000A02329	3		
12	Condenser ass'y	15823000000681	1		
12.1	Condenser A	15823000000549	1		
12.2	Condenser inlet pipe assy'	15123000002027	1		
12.3	Condenser outlet pipe assy'	15123000002017	1		
13	Low pressure valve assy'	15423000000528	1		
13.1	Block valve	15500206000026	1		
14	Stop valve ass'y	15423000003178	1		
14.1	Block valve	15500206000018	1		
15	Discharge pipe	15123000002461	1		
16	Fixed speed rotary compressor	11103010001449	1		
17	Base assembly	12223000002433	1		
19	Outlet pipe 5, condenser	15123000002288	1		
20	Green ground line	17401110000020	1		
21	Compressor wire joint ass'y	17401203001243	1		