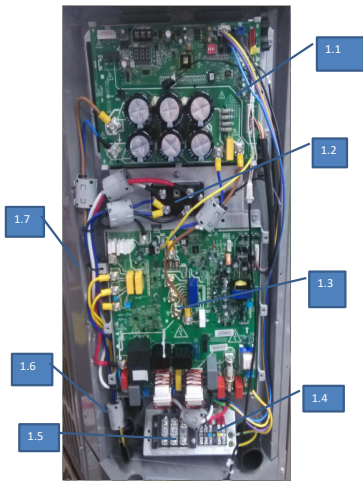
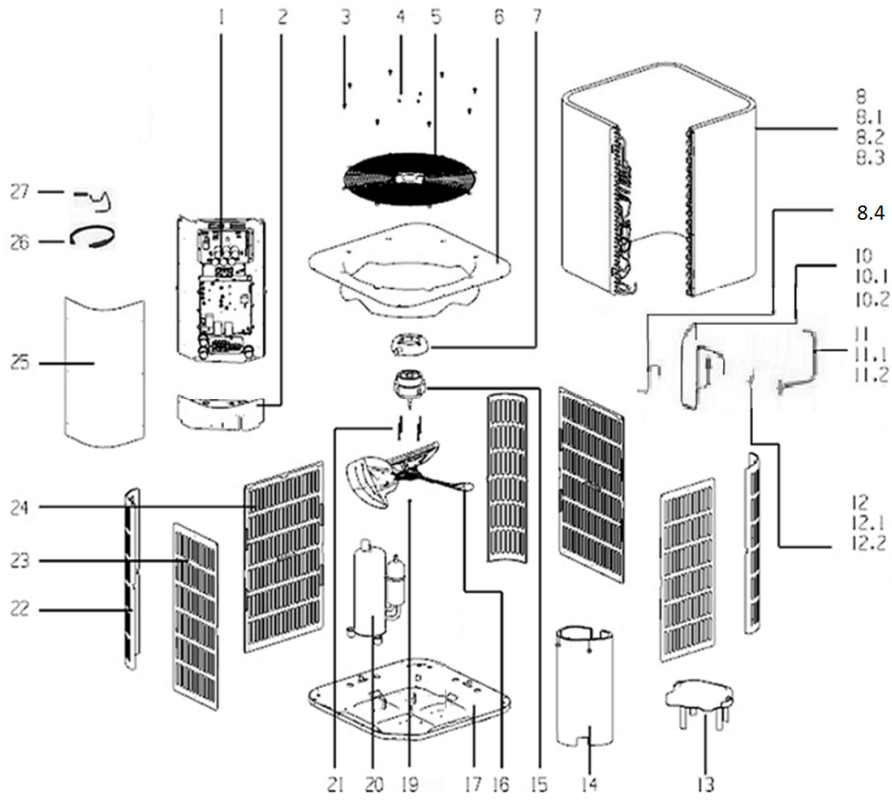


Model MRR48-410  
Power 208/230,60Hz,1Ph

# ComfortStar®



No.	New code	Part Name	Quantity	BOM code	Price(\$\$)	Remark
1	1722300000432	E-part box ass'y	1	203375790158		
1.1	17123000001113	Main control borad ass'y	1	201375890212		
1.2	11201418000002	Three phase bridge	1	202300500326		
1.3	17123000001114	Main control borad ass'y	1	201375790106		
1.4	17400401000171	Wire joint, 5p	1	202301400587		
1.5	17400401000242	Wire joint, 3p	1	202301400593		
1.6	11201103000002	EMC Solenoid	6	202301000016		
1.7	12223000001190	E-part installation combination ass'y	1	201275890178		
1.8	12223000001182	Electrical inductance box ass'y	1	201275890181		
1.9	17400306000304	Electric reactor	2	202301001030		
2	12223100000238	Below side board ass'y	1	201275290093		
3	11301002000001	Stainless steel bolts	8	202501100866		
4	11301604000001	Cap nut	4	202502000497		
5	12227700003729	Grille	1	201296090213		
6	12223000001096	Top cover assembly (SB3053, RoHS)	1	201275590272		
7	12123000000464	Motor installation board ass'y	1	201175990009		
8	15823000000690	Condenser part	1	201575790169		
8.1	15823000001024	Condenser	1	201575790170		
8.2	15123000007102	Condenser inlet pipe ass'y	1	201675791049		
8.3	15123000002024	Condenser outlet pipeline ass'y	1	201675791051		
8.4	15123000002296	Outlet pipe of condenser	1	201675490367		
10	15423000000704	Exhaust pipe ass'y	1	201675891040		
10.1	17400516000077	Pressure controller	1	202301801106		
10.2	15123000005454	Exhaust pipe	1	201675891041		
11	15423000000535	Low pressure valve ass'y	1	201675891042		
11.1	15500206000017	Block valve	1	201601601362		
11.2	15123000005450	Low pressure valve connection pipe	1	201675891043		
12	15423000003178	High pressure valve ass'y	1	201675290658		
12.1	15500206000018	Block valve	1	201601601361		
13	12600901000103	Rubber Cap	1	202775890006		
14	12400301000411	Sound insulation cotton	1	202175890013		
15	11002015000063	Brushless DC Motor	1	202400300559		
16	12200104000038	Fan	1	201200300245		
17	12223000002440	Chassis Parts	1	201275490068		
19	11301512000143	Nut	1	202502050059		
20	11103020000029	Compressor	1	201400611148		
21	11301805000012	Electrical installation bolt	4	202501100925		
22	12223100000247	Supporting board	3	201275790101		
23	12223100000368	Side board ass'y 2	2	201275890051		
24	12223000004187	Side board ass'y	2	201275890194		
25	12223000002532	Side board ass'y	1	201275890177		
26	17402001000040	Compressor electric heater (with spring)	1	202403101785		
27	11201007000082	Discharge Temp. sensor ass'y	1	202301300124		