

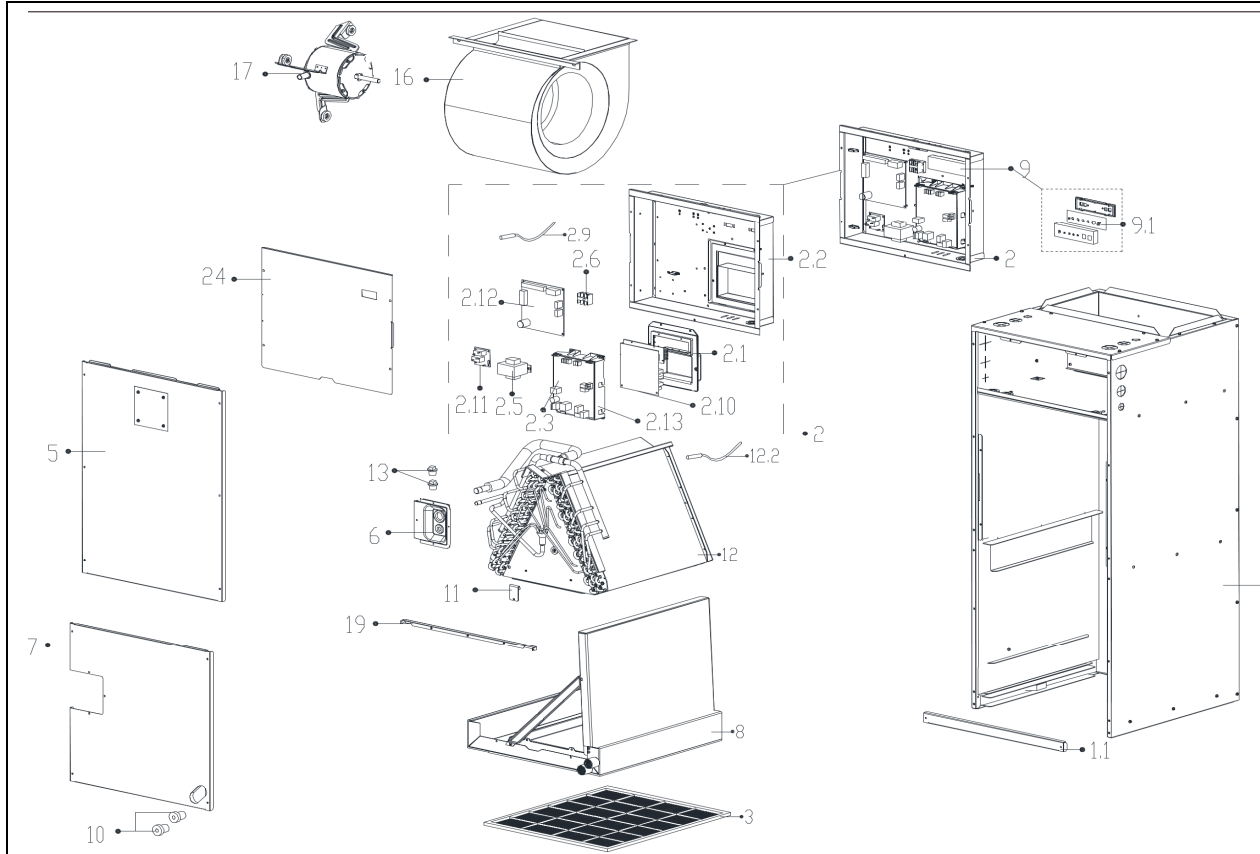
ComfortStar Model:

AHU48

Power Supply :

208-230V/1Ph/60HZ

ComfortStar®



| No.  | PART#          | Part Name  | Quantity |
|------|----------------|--|----------|
| 1    | 12223000012117 | Chassis subassembly  | 1        |
| 1.1  | 12223000012116 | Filter filter clamp  | 1        |
| 2    | 17223000006617 | Duct electronic control box subassembly                      | 1        |
| 2.2  | 12223000012109 | Electronic control box                                       | 1        |
| 2.3  | 17123000006157 | Duct main control board subassembly                          | 1        |
| 2.5  | 11203103000087 | Linear Transformer   | 1        |
| 2.6  | 17400401000085 | Wire joint   | 1        |
| 2.9  | 11201007003563 | Room Temperature Sensor                                      | 1        |
| 2.10 | 17122000048529 | Inverter control board subassembly                           | 1        |
| 2.11 | 17117600000064 | Auxiliary electric heater control board subassembly          | 1        |
| 2.12 | 17122000048527 | Data transfer module control board printed board subassembly | 1        |
| 2.13 | 12123000000800 | Insulation plate   | 1        |
| 3    | 12223000012332 | Air filter   | 1        |
| 5    | 12223000012118 | Upside board subassembly                                     | 1        |
| 6    | 12223000012110 | Pipe clamp board subassembly                                 | 1        |
| 7    | 12223000012108 | Underside board subassembly                                  | 1        |
| 8    | 12223000012115 | Water collector subassembly                                  | 1        |
| 9    | 17223000006618 | Duct display board subassembly                               | 1        |
| 9.1  | 17123000004237 | Duct display board   | 1        |
| 10   | 12623000000194 | Seal stopper   | 2        |
| 12   | 15823100000482 | Evaporator assembly  | 1        |
| 12.2 | 11201007003437 | Pipe Temperature Sensor                                      | 1        |
| 13   | 12600801000001 | Rubber seal  | 1        |
| 13   | 12600801000002 | Rubber seal  | 1        |
| 16   | 12200101000253 | centrifuge fan assembly                                      | 1        |
| 17   | 11002015010886 | Brushless DC Motor   | 1        |
| 19   | 12223100000197 | Rear support board   | 1        |
| 24   | 12223000012120 | Electric control box cover                                   | 1        |