



Submittal

Split System Cooling

AHU36-SG2

Location: _____
Engineer: _____
Submitted to: _____
Submitted by: _____
Reference: _____

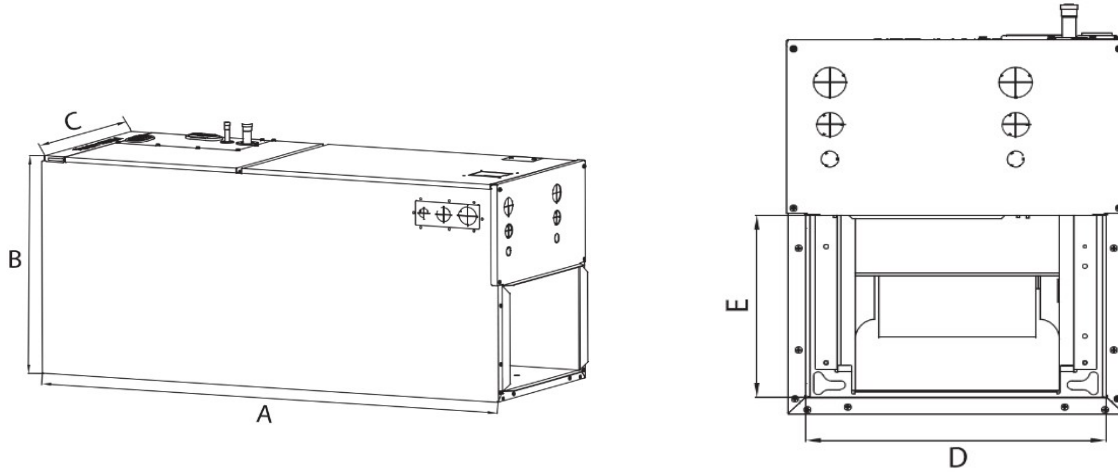
Approval: _____
Date: _____
Construction: _____
Unit # : _____
Drawing # : _____



Note:" Graphics in this document are for representation only. Actual model may differ in appearance."

ComfortStar®

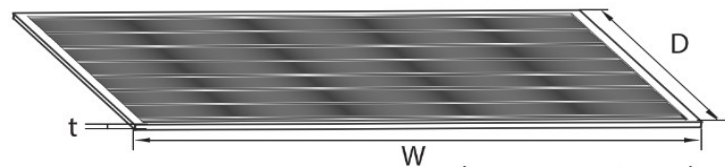
Indoor unit installation size



(unit:mm/inch)

| Dimensions | | Model | | |
|-------------|------|-----------|-----------|----------|
| | | 12K ~ 24K | 30K ~ 48K | 60K |
| Length of A | mm | 1143 | 1245 | 1346 |
| | inch | 45 | 49 | 53 |
| Length of B | mm | 533 | 533 | 533 |
| | inch | 21 | 21 | 21 |
| Length of C | mm | 445 | 533 | 622 |
| | inch | 17-1/2 | 21 | 24-1/2 |
| Length of D | mm | 400 | 490 | 580 |
| | inch | 15-3/4 | 19-5/16 | 22-27/32 |
| Length of E | mm | 260 | 260 | 260 |
| | inch | 10-1/4 | 10-1/4 | 10-1/4 |

Recommended size of filter

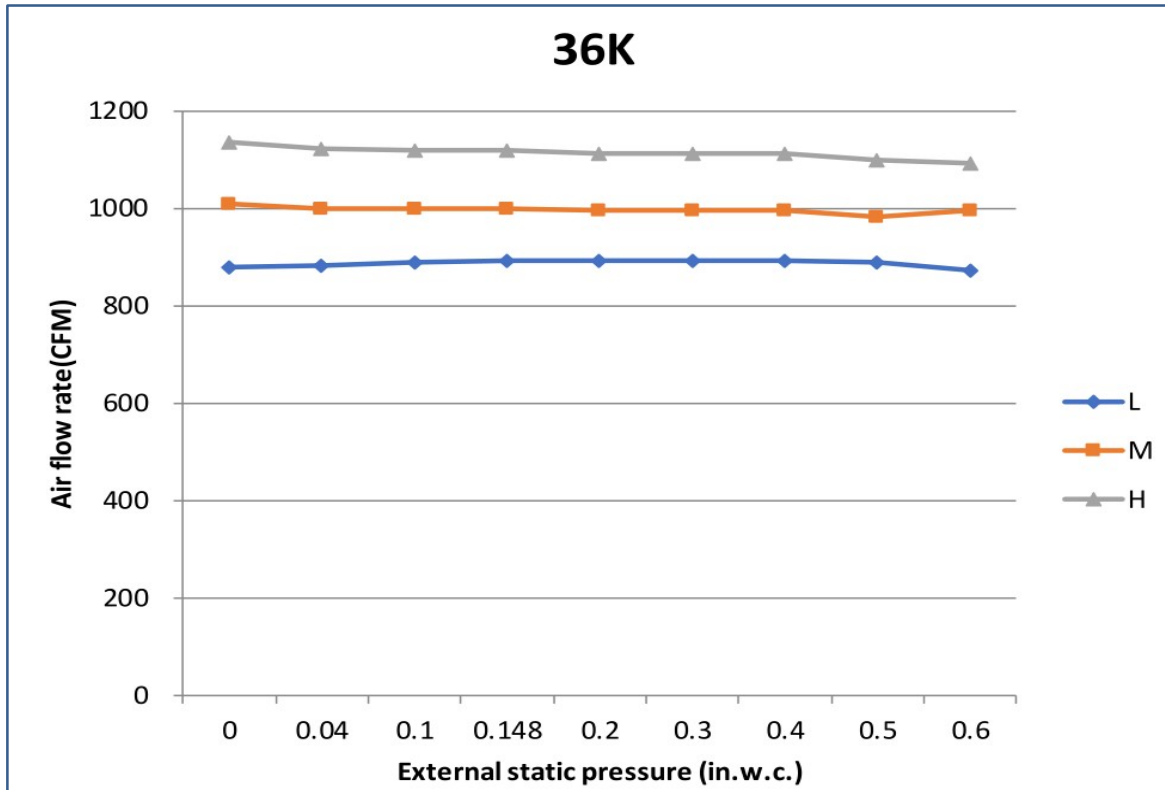


(unit:mm/inch)

| | | Model (Btu/h) | | | |
|----------------------------|---|---------------|---------|----------|-------|
| | | 12K ~24K | 30K~36K | 48K ~60K | |
| Recommended size of filter | W | mm | 406.4 | 495.3 | 584.2 |
| | | inch | 16 | 19-1/2 | 23 |
| | D | mm | 508 | 508 | 508 |
| | | inch | 20 | 20 | 20 |
| | t | mm | 25.4 | 25.4 | 25.4 |
| | | inch | 1 | 1 | 1 |

| SYSTEM PERFORMANCE DATA | | |
|---------------------------------------|-------------|----------------------------|
| Power supply | | |
| Normal Operational Voltage | (V, Ph, Hz) | 208/230, 1, 60 |
| Voltage Range | (V) | 187-253 |
| Electrical | | |
| Minimum circuit ampacity | (A) | 24 |
| Max.fuse | (A) | 40 |
| Connection wiring | | 16AWG*2 Stranded, shielded |
| Cooling | | |
| Rated Capacity | (Btu/h) | 36000 |
| Capacity Range | (Btu/h) | 7700~38900 |
| Power Input | (W) | 3750 |
| Rated current | (A) | 15.82 |
| SEER2 | (Btu/W) | 16.9 |
| EER2 | (Btu/W) | 10.1 |
| Heating at 47F | | |
| Rated Capacity | (Btu/h) | 36000 |
| Capacity Range | (Btu/h) | 6000~36400 |
| Power Input | (W) | 3496 |
| Rated current | (A) | 16.12 |
| HSPF2-4 | (Btu/W) | 8.2 |
| HSPF2-5 | (Btu/W) | 6.1 |
| COP | W/W | 3.02 |
| Throttle type | Indoor unit | EEV for cooling |
| Indoor(cooling/ heating) | (Deg. °F) | 60~90/32~86 |
| | (Deg. °C) | 16~32/0~30 |
| Application area | (sq.ft) | 516.67~753.47 |
| | (m2) | 48~70 |
| INDOOR UNIT DATA | | |
| Indoor fan motor | | |
| Type | | Centrifugal |
| Model | | ZKFD-375-8-1 |
| Qty | | 1 |
| Input | (W) | 168 |
| RLA | (A) | --- |
| LRA | (A) | --- |
| Winding Resistance | (Ω) | --- |
| Capacitor | (uF) | --- |
| Speed(Hi/Mi/Lo) | (r/min) | --- |
| Air flow & Noise level | | |
| Indoor air flow (Hi/Med/Lo) (No duct) | (CFM) | 1082.35/970.59/864.71 |
| Indoor noise level (Hi/Med/Lo) | [dB(A)] | 46.8/44/41.3 |
| Dehumidification | (Pint/H) | --- |
| Indoor unit | | |
| Dimension (WxDxH) | (inch) | 21.02x21.02x49.02 |
| | (mm) | 534x534x1245 |
| Packing(WxDxH) | (inch) | 25.20x24.41x54.33 |
| | (mm) | 640x620x1380 |
| Net/Gross weight | (lbs.) | 58.6/70.6 |
| | (kg) | 129.19/155.64 |

Fan performance



ComfortStar®

12201 N W 107th Avenue
Miami, FL 33178
1.866.524.9898 Toll Free
305.500.9898 Office
305.500.9896 Fax
<http://www.comfortstarusa.com>



The AHRI mark indicates Comfortstar participating in the AHRI Certification program. Visit ahridirectory.org for verification of individual certified products. Comfortstar reserves the right to change design and specs without notice. Comfortstar has a policy of update the data continuously. We are committed to using environmentally conscious print practices.

AHU36-SG2 22 Jun 2022
Supersedes AHU36-SG2 (Sept.2021)

© 2022 ComfortStar