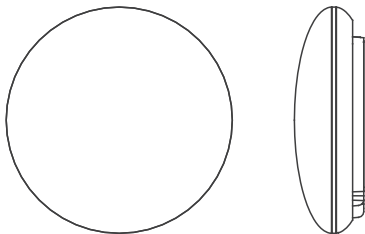


SMART PORT OF AIR CONDITIONER

ComfortStar®
INVERTER

Installation and Owner's Manual

MODEL: WIFI-SP



IMPORTANT NOTE:

Thank you very much for purchasing our product. Before using your unit, please read this manual carefully and keep it for future reference.

- This manual gives detailed description of the precautions that should be brought to your attention during operation.
- In order to ensure correct service of the smart port, please read this manual carefully before using the unit.
- For convenience of future reference, keep this manual after reading it.

CONTENTS

1. SAFETY PRECAUTION.....	1
2. DOWNLOAD AND INSTALL APP.....	3
3. INSTALLATION ACCESSORY.....	4
4. INSTALLATION METHOD.....	5
5. SPECIFICATION.....	11
6. USER REGISTRATION	12
7. NETWORK CONFIGURATION.....	13
8. HOW TO USE APP	23
9. SPECIAL FUNCTIONS.....	25
10. APP DECLARATION.....	31

1. SAFETY PRECAUTION

- Read the safety precautions carefully before installing the unit.
- Stated below are important safety issues that must be obeyed.

Applicable system: IOS, Android.

(Suggest:IOS 10.3, Android 6.0)

NOTE:

- APP can not support the latest software version of Android and IOS system.
- Due to special situation may be occurred, we explicitly claim below: Not all of the Android and IOS systems are compatible with APP. We will not be responsible for any issues as a result of the incompatibility.

Wireless safety strategy

- Smart kit only support WPA-PSK/WPA2-PSK encryption and none encryption . WPA-PSK/WPA2-PSK encryption is recommended. .

1. SAFETY PRECAUTION



CAUTION

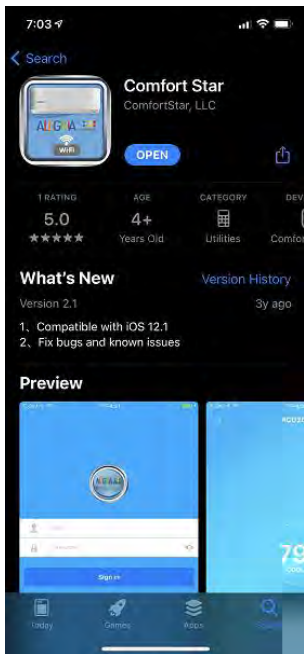
- Please Check The Service Website For More Information.
- Smart Phone camera needs to be 5 million pixels or above to make sure scan QR code well.
- Due to different network situation, sometimes, request time-out could happen, thus, it is necessary to do network configuration again.
- Due to different network situation, control process may return time-out sometimes. If this situation occurs, the display between board and App may not be the same, please do not feel confused.

NOTE:

Company will not be liable for any issues and problems caused by Internet, Wi-Fi Router and Smart Devices. Please contact the original provider to get further help.

2. DOWNLOAD AND INSTALL APP

Search Comfort Star APP in Google Play or App store.
Down load the APP.



3. INSTALLATION ACCESSORY

Select the installation location

Don't install at the place which is covered with heavy oil, vapor or sulfureted gas, otherwise, this product would be deformed that would lead to system malfunction.

Preparation before installation

1. Please confirm that all the following parts have been supplied.

No.	Name	Qty.	Remarks
1	Smart port	1	_____
2	Installation and owner's manual	1	_____
3	Screws	3	M4X20 (For Mounting on the Wall)
4	Wall plugs	3	For Mounting on the Wall
5	Smart kit	1	_____
6	The connective wires group-1	1	See Fig.4-3

2. Prepare the following assemblies on the site.

No.	Name	Qty.(embedded into wall)	Specification (only for reference)	Remarks
1	Wiring Tube(Insulating Sleeve and Tightening Screw)	1	_____	_____

4. INSTALLATION METHOD

1. Wifi controller structure size figure

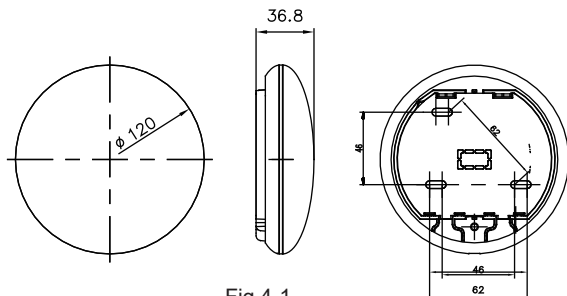


Fig 4-1

2. Wiring Principle Sketch:

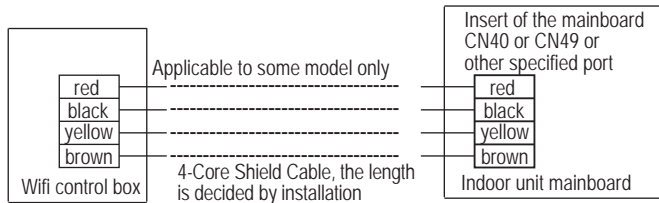
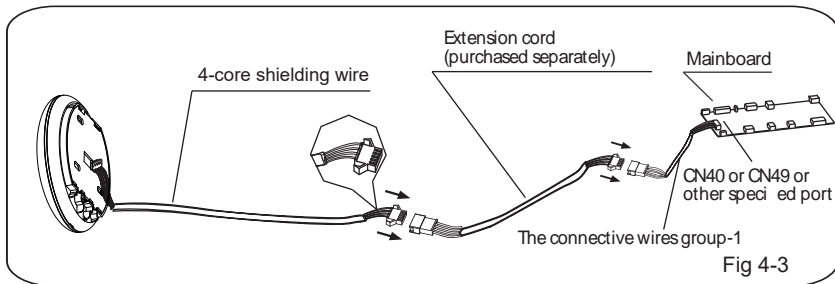


Fig 4-2

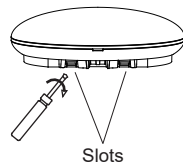
3.Wiring figure



- Connect the male joint of the connective wires group-1 to the mainboard, then connect the other side of the connective wires group-1 to the 4-core shielding wire of the smart port. (See Fig.4-3)
- If want to extent the wire ,please use extension cord (purchased separately) . (See Fig.4-3)

4.Remove the upper part of the smart port

- Insert a slot screwdriver into the slots in the lower part of the smart port (2 places), and remove the upper part of the smart port. (Fig.4-4)



5. Fasten the back plate of the smart port

- For exposed mounting, fasten the back plate on the wall with the 3 screws (M4×20) and plugs. (Fig.4-5)

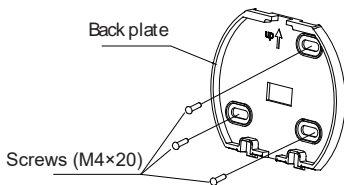


Fig 4-5

6. Insert the smart kit with slightly strength into the main PCB of the smart port .(Fig.4-6)

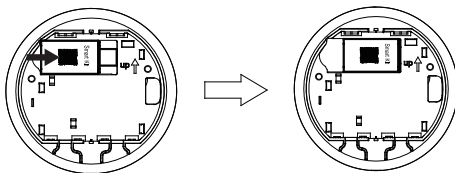


Fig 4-6

7. Wiring

A. For exposed mounting, two outletting positions.

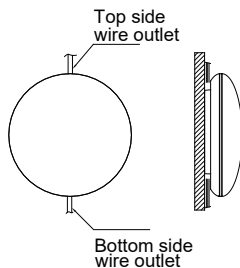
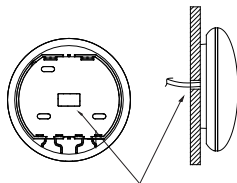


Fig 4-7

B. Shielded wiring

Wiring through the wall



Wiring hole and wall hole
Diameter of wall hole: $\Phi 20\text{mm}$

Fig 4-8

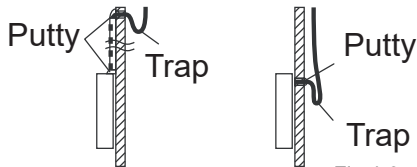


Fig 4-9



CAUTION

Avoid the water enter into the smart port, use trap and putty to seal the connectors of wires during wiring installation. (Fig.4-9) When under installation, reserve certain length of the connecting wire for convenient to take down the smart port while during maintenance.

8. Reattach the upper part of the smart port

- After adjusting the upper case and then buckle the upper case; avoid clamping the wiring during installation. (Fig 4-10)

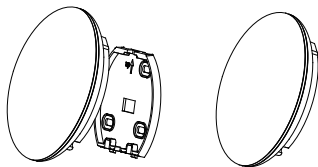


Fig 4-10

9. Connect the smart port to the wire controller (if needed)

- ① Remove the top cover from the gap between the top cover and bottom by a tool with flat head. (See Fig.4-11)
- ② Use the connective cable to connect the wire controller and CN3 of the smart port. (See Fig.4-12)(refer to the Wire controller manual for details)

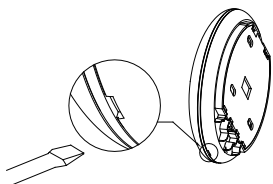


Fig 4-11

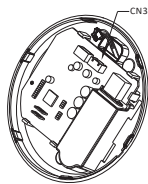


Fig 4-12

NOTE:

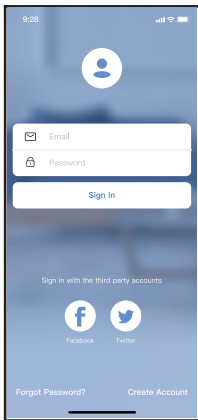
- Connection for wired control function by KJR-120C/TF-E
KJR-120G2/TFBG-E

5. SPECIFICATION

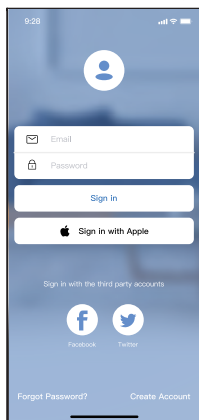
Model	WiFi-SP
Standard	IEEE802.11b/g/n
Antenna Type	Wxternal omnidirectional Antenna
Frequency	WiFi:2.4G
Maximum Transmitted Power	19.8dBm Max
Operation Temperature	0 °C~45°C/32°F~113°F
Operation Humidity	10%~85%
Power Input	DC 12V/300mA

6. USER REGISTRATION

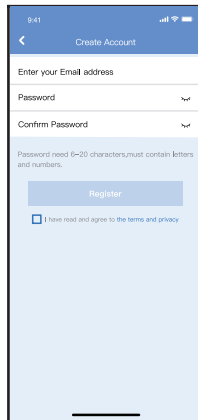
- Please ensure your mobile device is connected to Wifi router. Also, the Wifi router has already connected to Internet before doing user registration and network configuration.
- It is better to log in your email box and active your registration account by clicking link in case you forget the password.



Android



iOS



① Click "Creat Account "

② Enter your email address and password, and then click "Register"

7. Network configuration



CAUTION

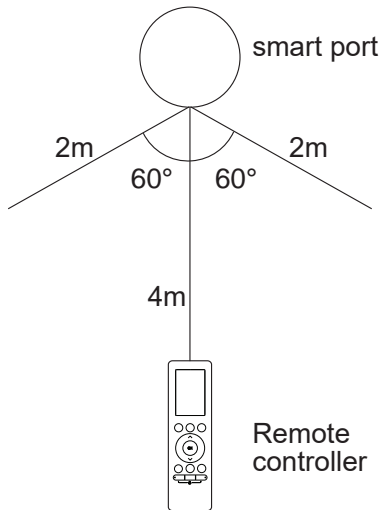
- It is necessary to forget any other around network and make sure the Android or IOS device just connect to the WIFI network you want to configure.
- Make sure the Android or IOS device WIFI function works well and can be connected back to your original WIFI network automatically.

Kindly reminder:

- When AC enters into AP mode, the air-conditioning remote controller can't control it. It is necessary to finish network configuration or power the AC again in order to control it. Alternatively, you need to wait 8 minutes to let the AC quit AP mode automatically.

NOTE:

- During network configuration, the maximum receiving distance is 4m at the horizontal direction. The maximum receiving distance is 2m within the range of 60 degrees from the horizontal direction.



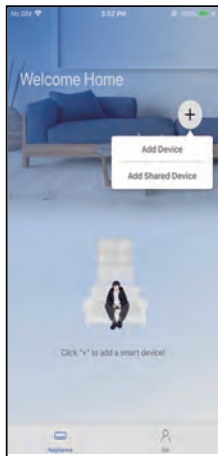
■ Using Android or iOS device to do network configuration

- Make sure your mobile device has already been connected to the Wi-Fi network which you want to use.
- Also, you need to forget other irrelevant Wi-Fi network in case it influences your configuration process.
Disconnect the power supply of AC.
- Connect the power supply of AC, and continuously press the “LED DISPLAY” or “DO NOT DISTURB” button seven times in 10 seconds.
- When the AC displays “AP”, it means that the AC Wi-Fi has already entered into “AP” mode.

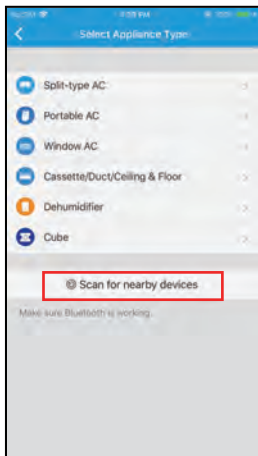
Note:

There are two ways to finish the network configuration:

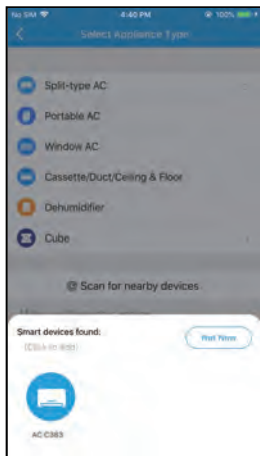
- Network configuration by Bluetooth scan
- Network configuration by select appliance type



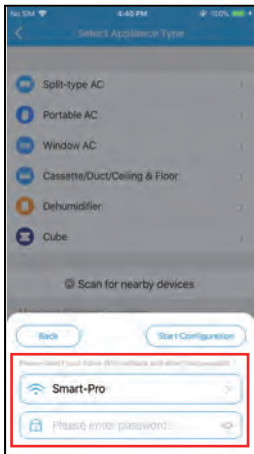
① Press " + Add Device "



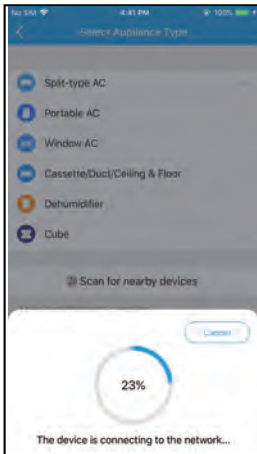
② Press "Scan for nearby devices"



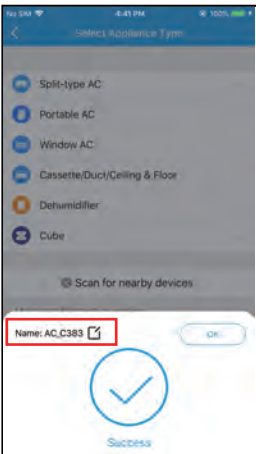
③ Wait smart devices to find, then click to add it



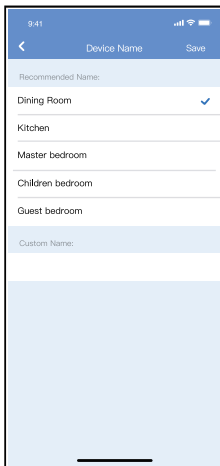
- ④ Select home Wi-Fi, enter the password



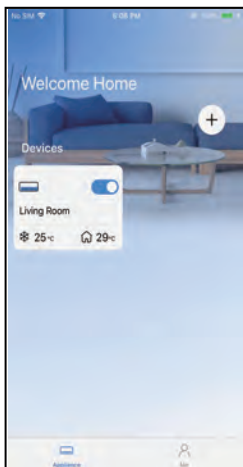
- ⑤ Wait connecting to the network



- ⑥ Configuration Success, you can modify the default name.

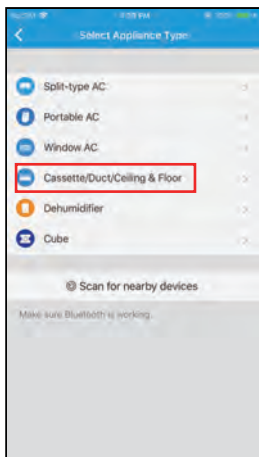


- ⑦ You can choose an existing name or customize a new name.

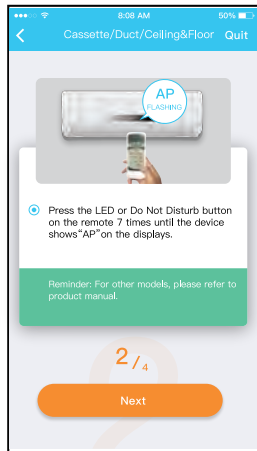
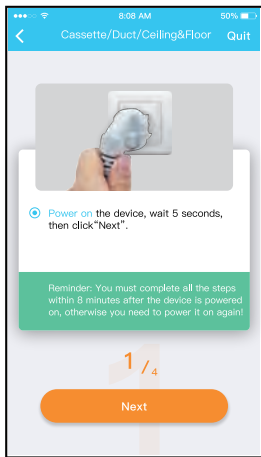


- ⑧ Bluetooth network configuration is successful, now you can see the device in the list.

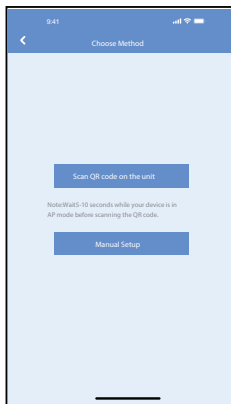
Network configuration by select appliance type :



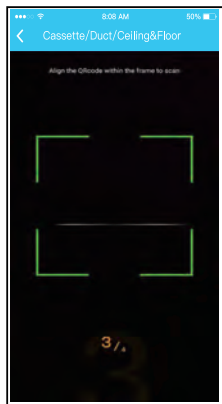
- ① If the bluetooth network configuration is failure, please select the appliance type.



- ② please follow the above steps to enter "AP" mode.



- ③ Choose the network configuration method.

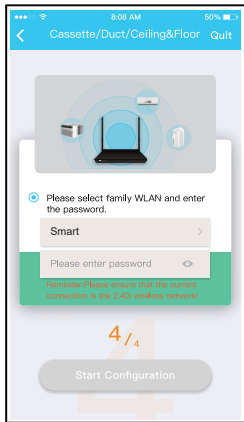


- ④ Choose the "Scan the QR code" method.

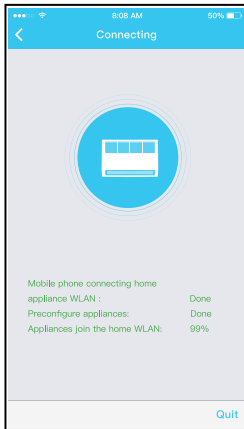


- ⑤ When choose the "Manual Setup" method(Android). Connect to the wireless network(iOS)

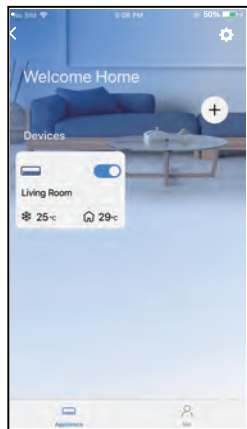
NOTE: Steps ③ and ④ are applicable to Android system only. iOS system does not need these two steps.



⑥ Please enter password



⑦ Network configuration is successful



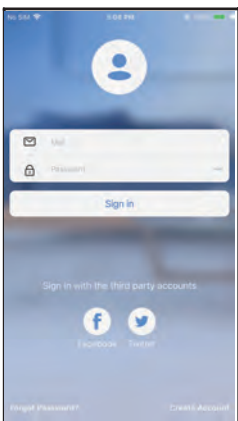
⑧ Configuration Success, you can see the device in the list.

NOTE:

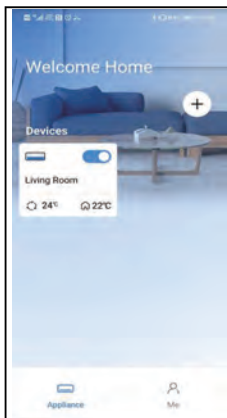
- When finishing network configuration, APP will display success cue words on the screen.
- Due to different internet environment, it is possible that the device status still display "offline". If this situation occurs, it is necessary to pull and refresh the device list on the APP and make sure the device status become "online". Alternatively, user can turn off the AC power and turn on it again, the device status will become "online" after a few minutes.

8. HOW TO USE APP

Please ensure both your mobile device and air conditioner are connected to the Internet before using app to control the air conditioner via internet, please follow the next steps:



① Click " Sign in "



② Choose the air conditioner.



- ③ Thus, user can control air conditioners on/off status, operation mode, temperature, fan speed and so on.

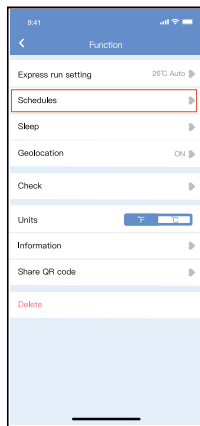
NOTE:

- Not all the functions of the APP are available on air conditioner. For example: ECO, Turbo, Left and Right Swing, Up and Down swing function, please check the user manual to find more information.

9. SPECIAL FUNCTIONS

■ Schedule

Weekly, user can make an appointment to turn on or off AC on specific time. User also can choose circulation to keep the AC under schedule control every week.



9:41 📶 🔋

< Schedules Confirm

2:41 1:41

9 04
10 05

11	06	On
----	----	----

12 07 Off
13 08

Repeat Mon, Thur. >

Settings Cool 17C High >

Label Unnamed >

9:41 📶 🔋

< Repeat Confirm

Commonly used:

Every day

Weekdays

Only once

Custom

Monday

Tuesday

Wednesday

Thursday

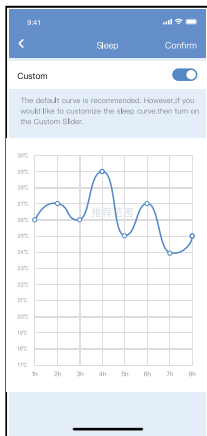
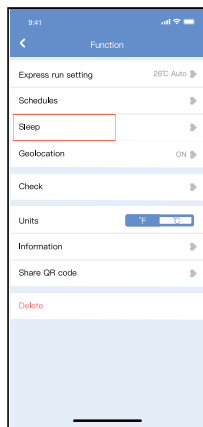
Friday

Saturday

Sunday

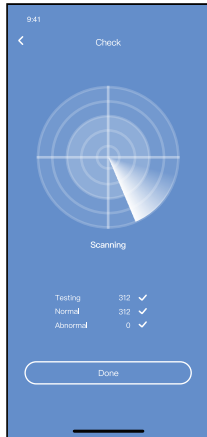
■ Sleep

User can customize their own comfortable sleep by setting target temperature.



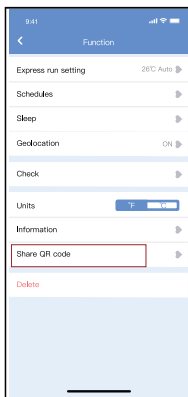
■ Check

User can simply check the AC running status with this function. When finishing this procedure, it can display the normal items, abnormal items, and detail information.



■ Share Device

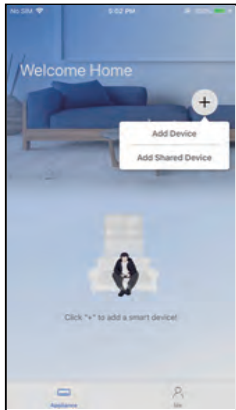
The air conditioner can be controlled by multi-users at the same time by Share Device function.



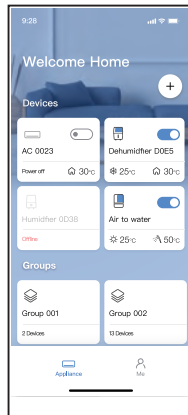
① Click "Shared QR code"



② QR code display.



- ③ The other users must log in " Comfort Star " app first, then click "Add Share Device" on their own mobile, then ask them to scan the QR code.



- ④ Now the others can add the shared device.

10. APP DECLARATION

Hereby, we declare that this Smart port is in compliance with the essential requirements and other relevant provisions of the Radio Equipment Regulations 2017. A copy of the full DoC is attached. (European Union products only)

In Canada, it should comply with CAN ICES-003 (B)/NMB-003(B)

CAUTIONS:

CONTAINS FCC ID: 2AS2HMZNA21

CONTAINS IC : 24951-MZNA21

This device complies with Part 15 of the FCC Rules and it contains licence-exempt transmitter(s)/receiver(s) that comply with Innovation, Science and Economic Development Canada's licence-exempt RSS(s). Operation is subject to the following two conditions:

- (1) This device may not cause interference;and
- (2) This device must acceptany interference,including interference that may cause undesired operation of the device.

Only operate the device in accordance with the instructions supplied. Changes or modifications to this unit not expressly approved by the party responsible for compliance could void the user's authority to operate the equipment.This device complies with FCC radiation exposure limits set forth for an uncontrolled environment. In order to avoid the possibility of exceeding the FCC radio frequency exposure limits, human proximity to the antenna shall not be less than 20cm (8 inches) during normal operation.

NOTE: This equipment has been tested and found to comply with the limits for a Class B digital device, pursuant to part 15 of the FCC Rules.

These limits are designed to provide reasonable protection against harmful interference in a residential installation. This equipment generates, uses and can radiate radio frequency energy and, if not installed and used in accordance with the instructions, may cause harmful interference to radio communications. However, there is no guarantee that interference will not occur in a particular installation. If this equipment does cause harmful interference to radio or television reception, which can be determined by turning the equipment off and on, the user is encouraged to try to correct the interference by one or more of the following measures:

- Reorient or relocate the receiving antenna.
- Increase the separation between the equipment and receiver.
- Connect the equipment into an outlet on a circuit different from that to which the receiver is connected.
- Consult the dealer or an experienced radio/TV technician for help.

NOTE:

All the illustrations in the manual are for explanation purpose only. Your unit may be slightly different. The actual shape shall prevail.

Company will not be liable for any issues and problems caused by Internet, Wi-Fi/Wireless Router and Smart Devices. Please contact the original provider to get further help.