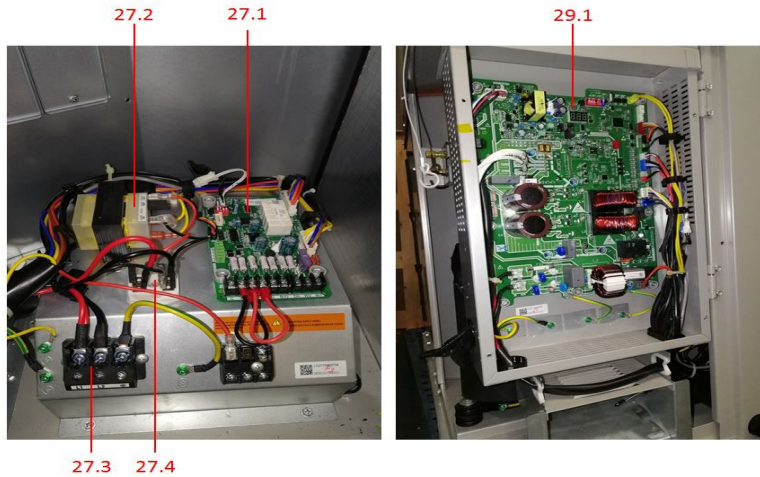
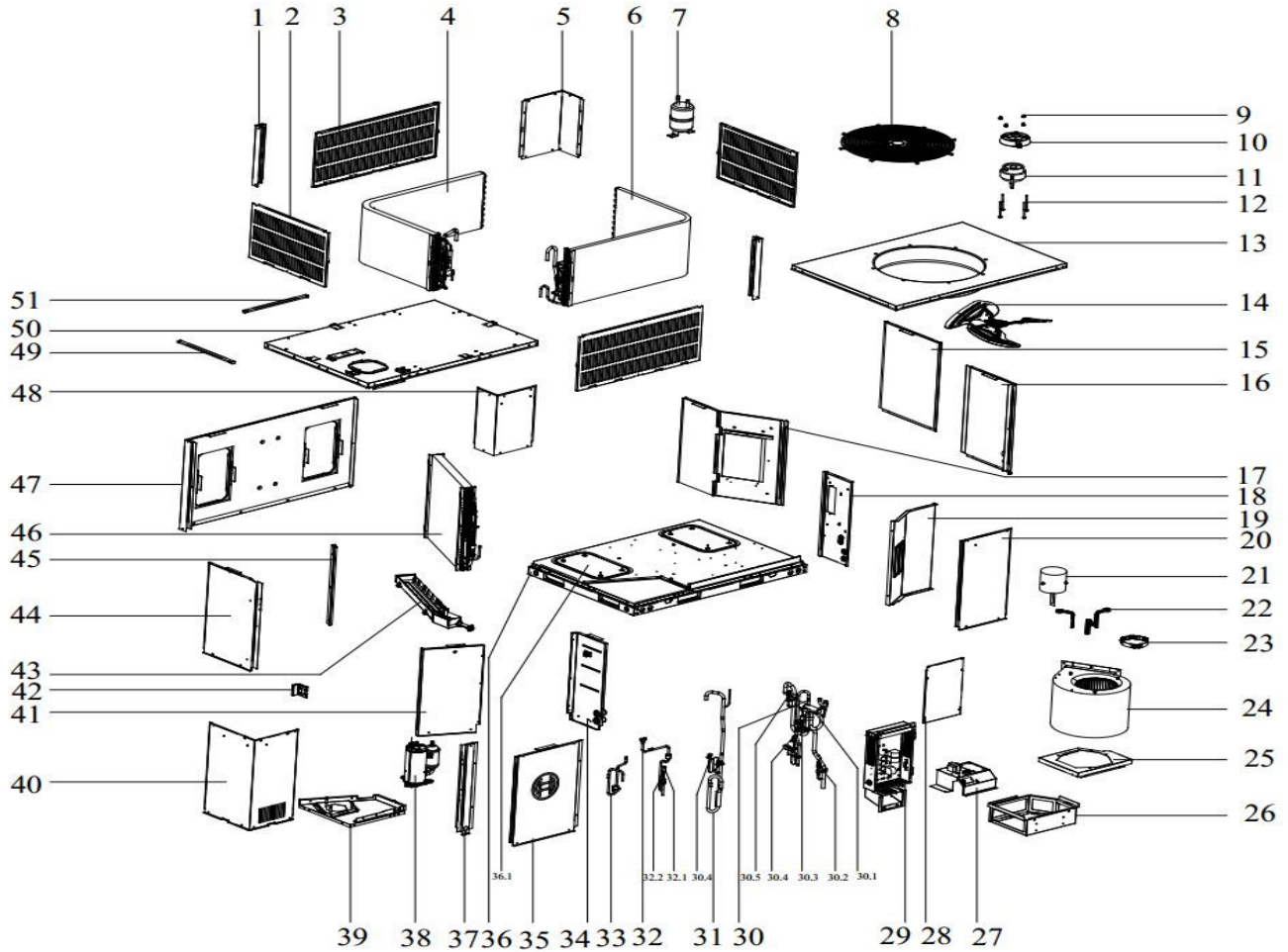


Exploded View

Model CCRT36-1-INV

ComfortStar®



EX_ID	Spare Parts Code	Part Name(EN)	Qty.	Price	Remarks
1	12227700006740	Column	2		
2	12227700006759	Preventer plate	2		
3	12227700006751	Preventer plate	2		
4	15827700000750	B unit condenser assembly	1		
5	12227700006753	Column	1		
6	15827700000752	Condenser part	1		
7	15500501000040	Gas-liquid separator	1		
8	12927700000321	protection net	1		
9	11301604000001	Nut	4		
10	12123000000464	Motor installation board ass'y	1		
11	11002015009472	Brushless DC Motor	1		
12	11301805000012	Motor Mounting bolt	4		
13	12227700006768	Top cover welding assembly	1		
14	12200104000038	Fan	1		
15	12227700006777	Internal panel assembly	1		
16	12227700006746	Column assembly	1		
17	12227700006508	Partition board assembly	1		
18	12227700006500	Partition board assembly	1		
19	12227700006518	Circuit board assembly duct	1		
20	12227700006742	Internal panel assembly	1		
21	11002015010726	Brushless DC Motor	1		
22	12223000001932	Supporter subassembly of fan motor	3		
23	12223000001992	Supporter of fan motor	1		
25	12227700006519	Wind wheel fixed plate	1		
26	12227700006515	Fan support board	1		
27	17227700000758	E-part box assembly	1		
27.1	17127700000886	Main control board assembly	1		
27.2	11203103000194	Linear Transformer	1		
27.3	17400401003296	Wire joint	1		
27.4	17400401000208	terminal block,2P	1		
28	12227700006745	Electric control box cover	1		

29	17227700000798	E-part box assembly	1		
29.1	17123000006377	Module board assembly	1		
30	15427700001572	Four-way valve assembly	1		
30.1	15500216001563	four-way valve assembly	1		
30.2	11201008000572	Pressure sensor	1		
30.5	15427000001439	Fusible plug assembly	1		
31	15427700001570	Suction pipe assembly	1		
32	15427700001573	Expansion valve assembly	1		
32.1	15500213001329	Electronic expansion valve suite	1		
32.2	15500504000130	Filter	2		
33	15427700001571	Discharge pipe assembly B	1		
34	12227700006757	Evaporator connecting plate assembly	1		
35	12227700006780	Internal panel assembly	1		
36	12227700006769	Chassis part	1		
36.1	12227700006771	Cover assembly	2		
37	12227700006762	Column assembly	1		
38	11103020004300	DC Inverter Rotary Compressor	1		
39	12227700006766	Compressor base assembly	1		
40	12227700006748	Outer panel	1		
41	12227700006764	Evaporator connecting plate assembly	1		
42	12227700006741	Installation board	1		
43	12127700000117	Drainage pan assembly	1		
44	12227700006760	Internal panel assembly	1		
45	12227700006514	Evaporator connecting plate assembly	1		
46	15827700001148	Evaporator assembly	1		
47	12227700006749	Internal panel assembly	1		
48	12227700006754	Column	1		
49	12227700006513	Fixing board	1		
51	12227700006520	Fixing board	1		