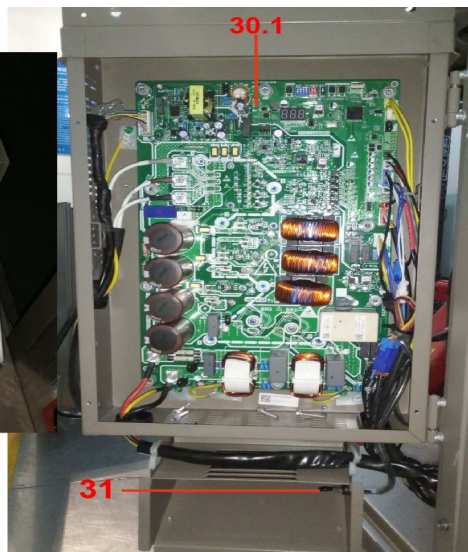
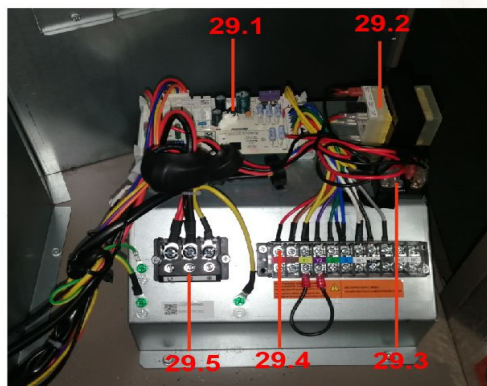
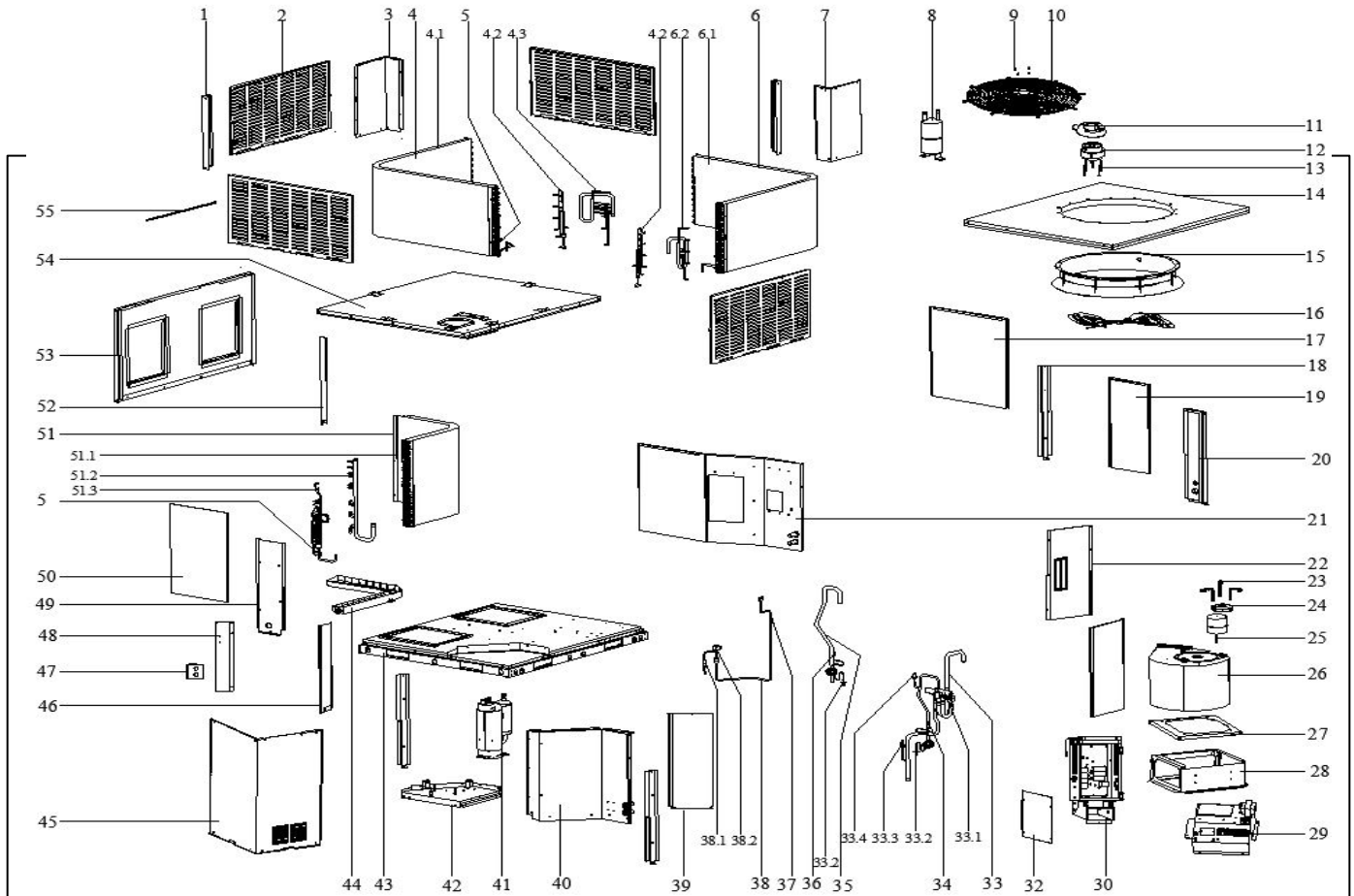


Exploded View

Ship Date: 2023-01-08

Model CCRT60-1-INV

ComfortStar®



EX_ID	Spare Parts Code	Part Name(EN)	Qty.	Price	Remarks
1	12227700006169	Column	2		
2	12227700006183	Preventer plate	4		
3	12227700006182	Column	1		
4	15827700000708	B unit condenser assembly	1		
4.1	15827700000709	Condenser A	1		
4.2	15127700005425	Output pipe assembly I of condenser	1		
4.3	15127700005431	Condenser input pipe assembly	1		
5	11201007000165	Pipe Temperature Sensor	2		
6	15827700000712	B unit condenser assembly	1		
6.1	15827700000713	Condenser A	1		
6.2	15127700005453	Condenser input pipe assembly	1		
7	12227700006190	Column	1		
8	15500501001528	Gas-liquid separator	1		
9	11301604000001	Nut	4		
10	12927700000261	protection net	1		
11	12123000000464	Motor installation board ass'y	1		
12	11002015009472	Brushless DC Motor	1		
13	11301805000012	Motor Mounting bolt	4		
14	12227700006178	Top cover assembly	1		
15	12227700006170	Air guide ring	1		
16	12200104000122	Axial fan	1		
17	12227700006168	components inside the panel	1		
18	12227700006181	Pole 5	3		
19	12227700006192	components inside the panel	2		
20	12227700006193	Pole 5	1		
21	12227700006179	Partition board assembly	1		
22	12227700006260	Circuit board assembly duct	1		
23	12223000001932	Supporter subassembly of fan motor	3		
24	12223000001992	Supporter of fan motor	1		
25	11002015009471	Brushless DC Motor	1		
26	12200101000213	Wind turbine parts	1		

27	12227700006164	Wind wheel fixed plate	1		
28	12227700006171	Fan support board	1		
29	17227700000645	E-part box assembly	1		
29.1	17123000005433	Indoor unit main control board	1		
29.2	11203103000194	Linear Transformer	1		
29.3	17400401000208	terminal block,2P	1		
29.4	17400401000182	Wire joint,11P	1		
29.5	17400401003296	Wire joint	1		
30	17227700000646	E-part box assembly	1		
30.1	17123000008397	Module board assembly	1		
31	11201007003028	Room Temperature Sensor	1		
32	12227700006163	Electric control box cover	1		
33	15427700001511	Four-way valve assembly	1		
33.1	15500216001563	four-way valve assembly	1		
33.2	15127700005433	Meter connector assembly	1		
33.3	11201008000572	Pressure sensor	1		
33.4	17400516000688	Pressure controller	1		
34	11201007001640	Discharge Temperature Sensor	1		
35	15427700001512	Suction pipe assembly	1		
36	11201007000277	Pipe Temperature Sensor	1		
37	11201007000097	Pipe Temperature Sensor	1		
38	15427700001510	Expansion valve assembly	1		
38.1	15500504000130	Filter	2		
38.2	15500213000908	Electronic expansion valve suite	1		
39	12227700006172	components inside the panel	1		
40	12227700006191	Partition board assembly	1		
41	11103020005480	DC Inverter Rotary Compressor	1		
42	12227700006165	Compressor base	1		
43	12227700006175	Chassis part	1		
44	12127700000097	Drainage pan assembly	1		
45	12227700006166	Panel	1		
46	12227700006188	Condenser connection board assembly	1		
47	12227700006185	Installation board	1		

48	12227700006167	Column	1		
49	12227700006240	Column assembly	1		
50	12227700006173	components inside the panel	1		
51	15827700001151	Evaporator assembly	1		
51.2	15127700005452	Evaporator output pipe assembly	1		
51.3	15127700005439	Evaporator input pipe assembly	1		
52	12227700006184	Evaporator connecting plate assembly	1		
53	12227700006180	components inside the panel	1		
54	12227700006189	Top cover assembly	1		
55	12227700006176	Support Plate	1		