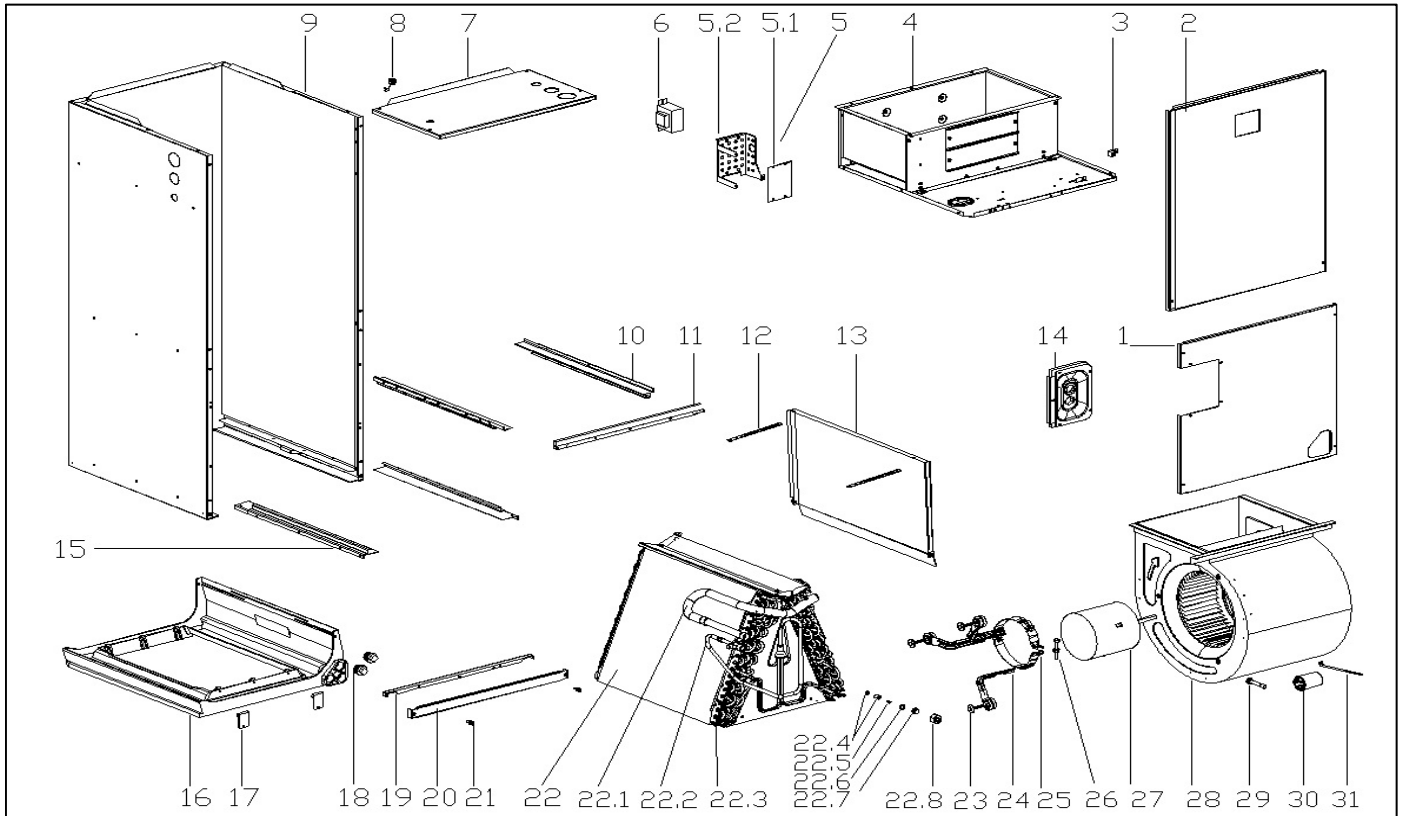


Exploded View

Model LUC5-36-15

ComfortStar®



EX_ID	Spare Parts Code	Part Name(EN)	Qty.	Price	Remarks
1	12223000010765	Side panel assembly	1		
2	12223000002200	Baffle ass'y	1		
3	11201708000008	Wiring Terminal	1		
4	12223000002121	Air duct ass'y	1		
5	17223000009203	E-part box assembly	1		
5.1	17123000009757	Indoor unit main control board	1.0		
5.2	12223000002167	Electric installation board	1.0		
6	11203103000141	Linear Transformer	1		
7	12223000002185	Baffle ass'y	1		

8	12100304000011	Clamp	1		
9	12223000002355	Base ass'y	1		
10	12223000001935	Drainage pan supporting board	2		
11	12223000010772	Supporter assembly	1		
12	12223000010756	Drainage pan clamp	2		
13	12223000001204	Drainage pan II	1		
14	12223000010789	Cover plate ass'y	1		
15	12223000010771	Drainage pan supporting board	2		
16	12123000000114	Drain pan ass'y	1		
17	12223000000028	Water pan cushion	2		
18	15500402000023	seal plug	2		
19	12223100000197	Supporting bar	1		
20	12223000002005	Filter cover	1		
21	11301230000002	Screw	2		
22	15823000004408	Evaporator assembly	1		
22.1	15223000000165	Output pipe assembly	1.0		
22.2	15423000004540	Evaporator input pipe assembly	1.0		
22.3	15823000004405	Evaporator	2.0		
22.4	15500210000968	Throttle	1.0		
22.5	15500220000049	Piston	1.0		
22.6	12100901000010	Sealing ring	1.0		
22.7	15500302000014	Flange joint	1.0		
22.8	15500402000245	Nut	1.0		
23	11301002000673	Hexagon head bolt and plain washer	3		
24	12223000001932	Supporter subassembly of fan motor	3		
25	12223000001992	Supporter of fan motor	1		
26	11301705000106	Hexagon head bolt	1		
27	11002012002456	Single phase asynchronous motor	1		
28	12200101000029	Fan assembly	1		
29	15500302000006	Attachment-flange connection pipe	1		
30	17400103000151	Capacitor	1		
31	12223000002177	Drainage pan clamp	1		