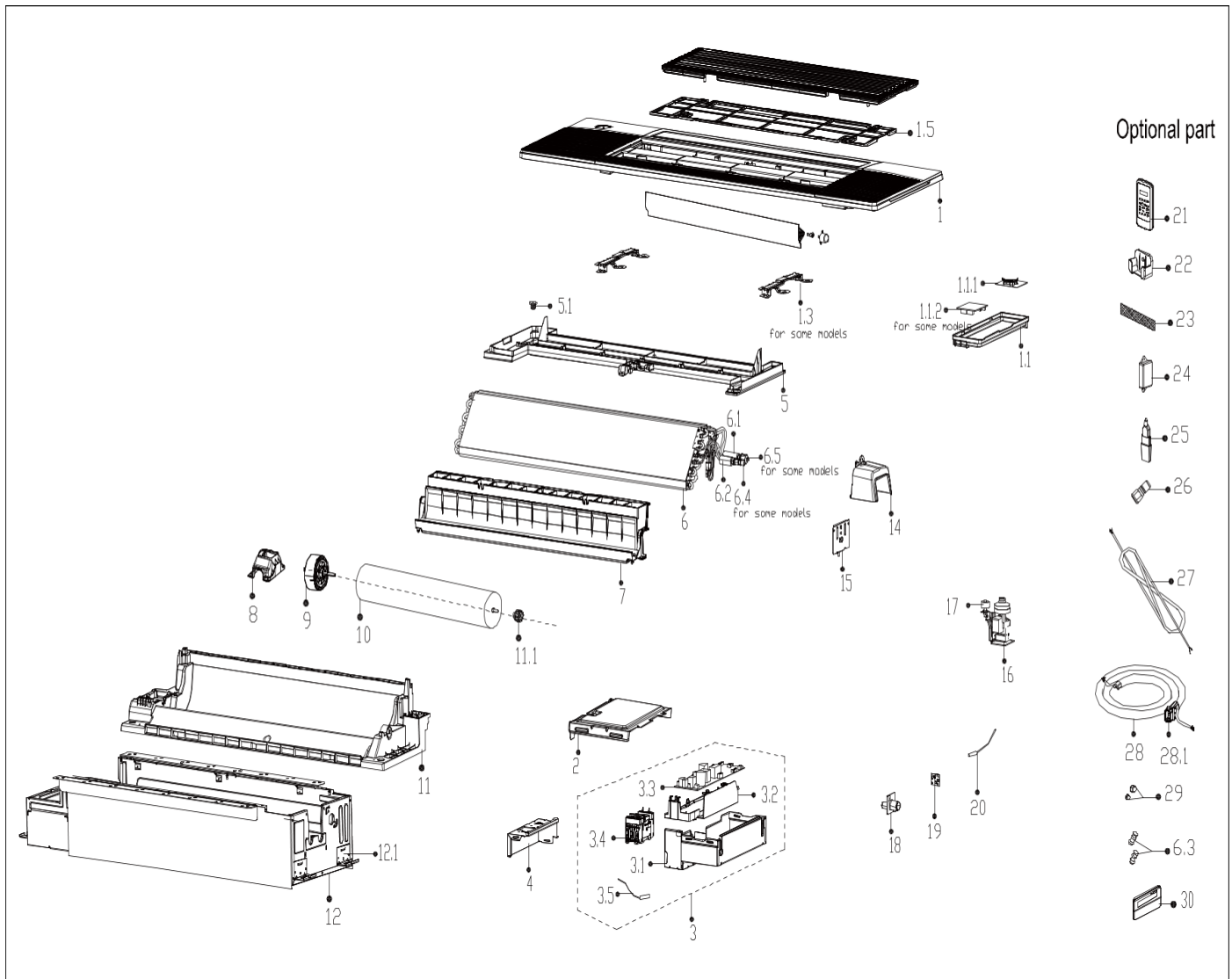


Exploded View

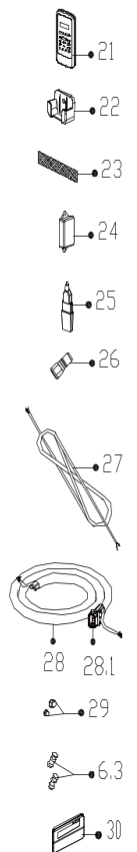
Model

T1W12P

ComfortStar®



Optional part



| EX_ID | Spare Parts Code | Part Name(EN) | Qty. | Price | Remarks |
|-------|------------------|---------------------------|------|-------|---------|
| 1 | 12122500A29281 | Panel assembly | 1 | | |
| 1.1 | 17222500A04797 | Display board subassembly | 1 | | |
| 1.1.1 | 17122500004112 | Display board subassembly | 1 | | |

| | | | | | |
|-------|----------------|------------------------------------|---|--|--|
| 1.1.2 | 17122500005091 | Adapter plate subassembly | 1 | | |
| 1.3 | 12222500002492 | locked button board | 2 | | |
| 1.5 | 12122500002707 | Air filter | 1 | | |
| 2 | 12222500002474 | Cover of electronic control box | 1 | | |
| 3 | 17222500003988 | Electronic control box subassembly | 1 | | |
| 3.1 | 12222500002452 | Electronic control box | 1 | | |
| 3.2 | 12122500002567 | Electronic control box | 1 | | |
| 3.3 | 17122500005291 | Main control board subassembly | 1 | | |
| 3.4 | 17400519000368 | Power switch | 1 | | |
| 3.5 | 11201007003448 | Room Temperature Sensor | 1 | | |
| 4 | 12222500002412 | Electric cover | 1 | | |
| 5 | 12122500002588 | Water tray components | 1 | | |
| 5.1 | 12600801000903 | Drain stopper | 1 | | |
| 6 | 15822500002619 | Evaporator subassembly | 1 | | |
| 6.1 | 15122500003576 | Evaporator outlet pipe subassembly | 1 | | |
| 6.2 | 15122500003577 | Evaporator inlet pipe subassembly | 1 | | |
| 6.4 | 15500209000001 | Check valve | 1 | | |
| 6.5 | 15500404000009 | Pipe Nut | 1 | | |
| 7 | 12122500002587 | Wind guide frame subassembly | 1 | | |
| 8 | 12122000031622 | Fan motor base | 1 | | |
| 9 | 11002015016793 | Brushless DC Motor | 1 | | |
| 10 | 12100102000936 | Cross flow fan | 1 | | |
| 11 | 12122500002607 | Air duct components | 1 | | |
| 11.1 | 12622000000131 | Bearing components | 1 | | |
| 12 | 12222500002413 | Chassis subassembly | 1 | | |
| 12.1 | 12223000012927 | Hook | 4 | | |
| 14 | 12122500002647 | Plastic parts | 1 | | |
| 15 | 12223000015688 | Support plate | 1 | | |
| 16 | 17400802003633 | Hood pump subassembly | 1 | | |
| 17 | 17400511001344 | Water Level Switch | 1 | | |
| 18 | 12100510000021 | Drain pipe | 1 | | |
| 19 | 17122000058071 | Humidity sensor subassembly | 1 | | |
| 20 | 11201007003437 | Pipe Temperature Sensor | 1 | | |
| 21 | 17317000A65490 | Remote controller | 1 | | |

| | | | | | |
|----|----------------|------------------------------|---|--|--|
| 22 | 12122000029201 | Bracket of remote Controller | 1 | | |
| 29 | 15500406000012 | Copper nut | 1 | | |
| 29 | 15500406000016 | Copper nut | 1 | | |
| 30 | 17317100A35732 | Wired controller | 1 | | |