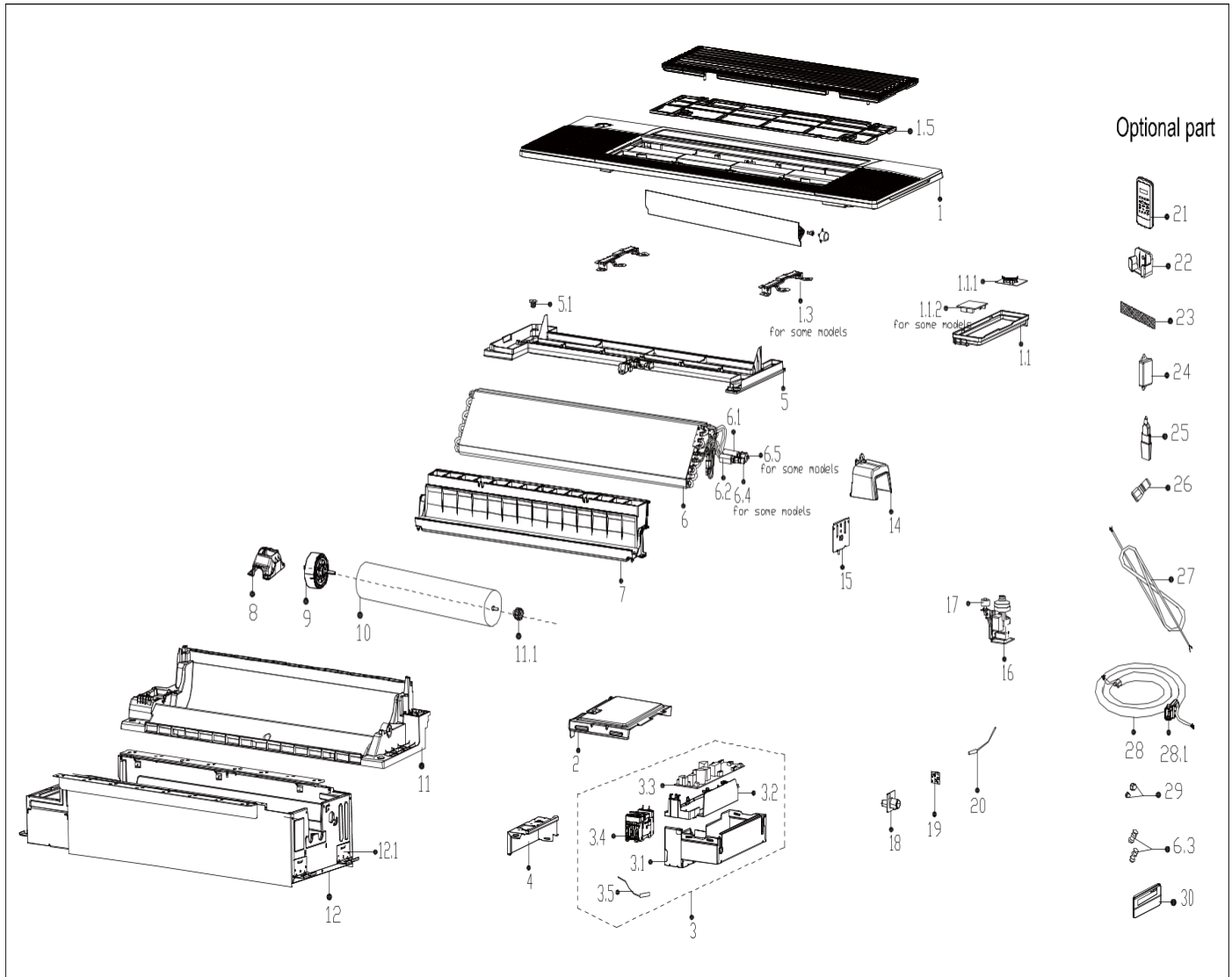


Exploded View

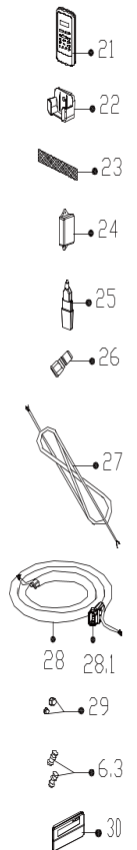
Model

T1W18P

ComfortStar®



Optional part



EX_ID	Spare Parts Code	Part Name(EN)	Qty.	Price	Remarks
1	12122500A29281	Panel assembly	1		
1.1	17222500A04797	Display board subassembly	1		
1.1.1	17122500004112	Display board subassembly	1		

1.1.2	17122500005091	Adapter plate subassembly	1		
1.3	12222500002492	locked button board	2		
1.5	12122500002707	Air filter	1		
2	12222500002474	Cover of electronic control box	1		
3	17222500003965	Electronic control box subassembly	1		
3.1	12222500002452	Electronic control box	1		
3.2	12122500002567	Electronic control box	1		
3.3	17122500005239	Main control board subassembly	1		
3.4	17400519000368	Power switch	1		
3.5	11201007003448	Room Temperature Sensor	1		
4	12222500002412	Electric cover	1		
5	12122500002588	Water tray components	1		
5.1	12600801000903	Drain stopper	1		
6	15822500002619	Evaporator subassembly	1		
6.1	15122500003576	Evaporator outlet pipe subassembly	1		
6.2	15122500003577	Evaporator inlet pipe subassembly	1		
6.4	15500209000001	Check valve	1		
6.5	15500404000009	Pipe Nut	1		
7	12122500002587	Wind guide frame subassembly	1		
8	12122000031622	Fan motor base	1		
9	11002015016793	Brushless DC Motor	1		
10	12100102000936	Cross flow fan	1		
11	12122500002607	Air duct components	1		
11.1	12622000000131	Bearing components	1		
12	12222500002413	Chassis subassembly	1		
12.1	12223000012927	Hook	4		
14	12122500002647	Plastic parts	1		
15	12223000015688	Support plate	1		
16	17400802003633	Hood pump subassembly	1		
17	17400511001344	Water Level Switch	1		
18	12100510000021	Drain pipe	1		
19	17122000058071	Humidity sensor subassembly	1		
20	11201007003437	Pipe Temperature Sensor	1		
21	17317000A65490	Remote controller	1		

22	12122000029201	Bracket of remote Controller	1		
29	15500406000012	Copper nut	1		
29	15500406000016	Copper nut	1		
30	17317100A35732	Wired controller	1		