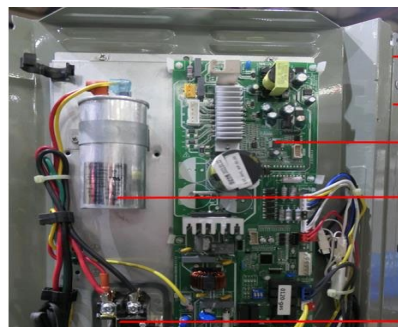
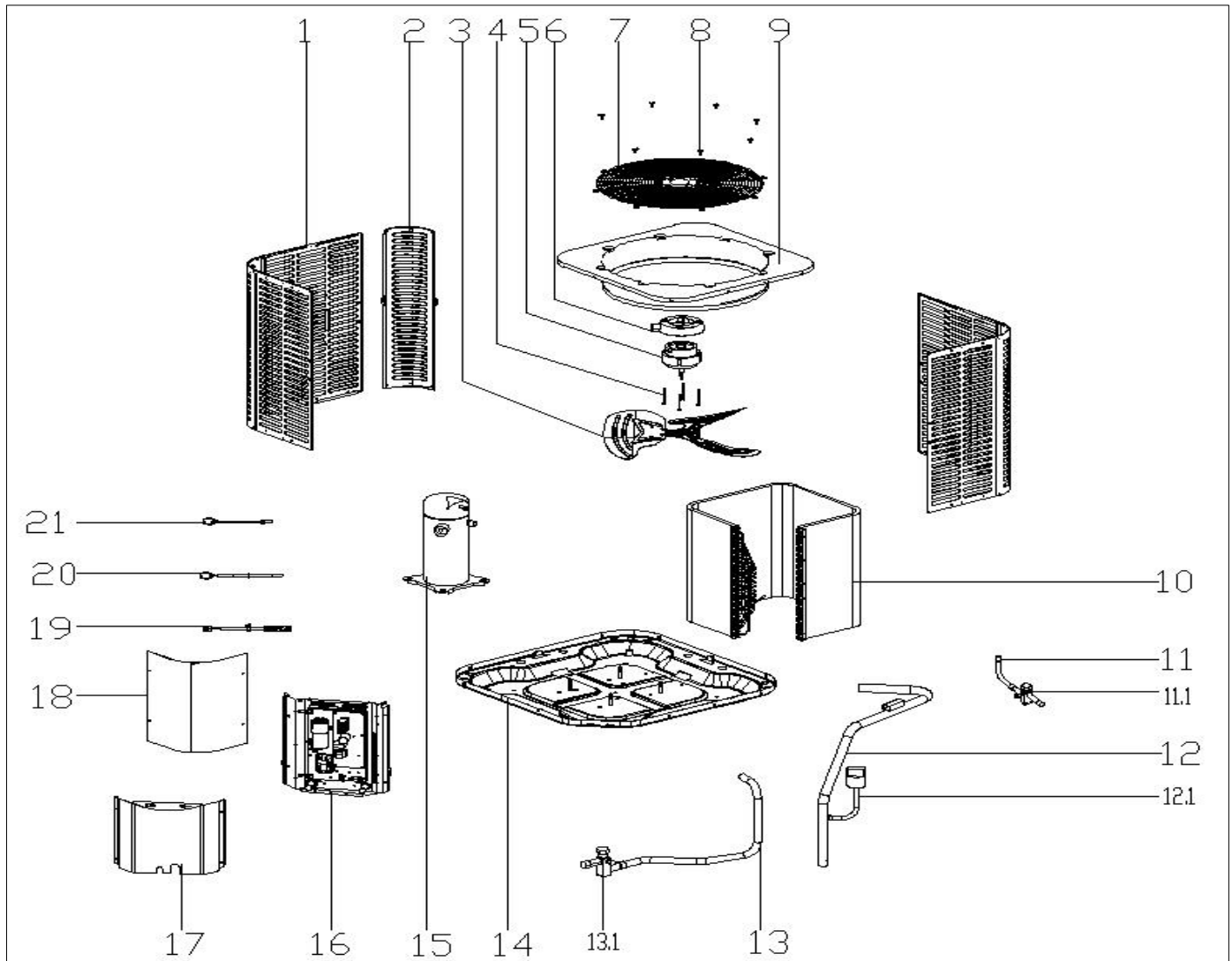


Exploded View

Model

BAR5-36-15

ComfortStar®



- 16
- 16.1
- 16.2
- 16.3
- 16.4



EX_ID	Spare Parts Code	Part Name(EN)	Qty.	Price	Remarks
1	12223000A02469	Side panel assembly	2		
1	12223000A02470	Side panel assembly	2		
2	12223000A02329	Support Plate	3		
3	12200104000038	Fan	1		
4	11301805000012	Motor Mounting bolt	4		
5	11002015015328	Brushless DC Motor	1		
6	12123000000464	Motor installation board ass'y	1		
7	12227700003729	Top cover	1		
8	11301002000001	Stainless steel bolts	8		
9	12223000001094	Top cover assembly	1		
10	15823000000263	Condenser ass'y	1		
11	15423000003178	Stop valve ass'y	1		
11.1	15500206000018	Block valve	1		
12	15423000005740	Discharge pipe assembly	1		
12.1	17400516000032	Pressure switch	1		
13	15423000000580	Stop valve ass'y	1		
13.1	15500206000026	Block valve	1		
14	12223000005894	Base assembly	1		
15	11102010000410	Fixed Speed Scroll compressor	1		
16	17223000008829	E-part box assembly	1		
16.1	12223000015849	Installation plate of electric parts subassembly	1		
16.2	17123000009518	Outdoor main control board assembly	1		
16.3	17400103000150	Capacitor	1		
16.4	11203502000032	AC contactor	1		
17	12223000016089	Side panel assembly	1		
18	12223000A05994	Side panel assembly	1		
19	17400513003814	Discharge Temperature switch	1		
20	11201007000073	Room Temperature Sensor	1		

21	11201007000136	Pipe Temperature Sensor	1		
----	----------------	-------------------------	---	--	--