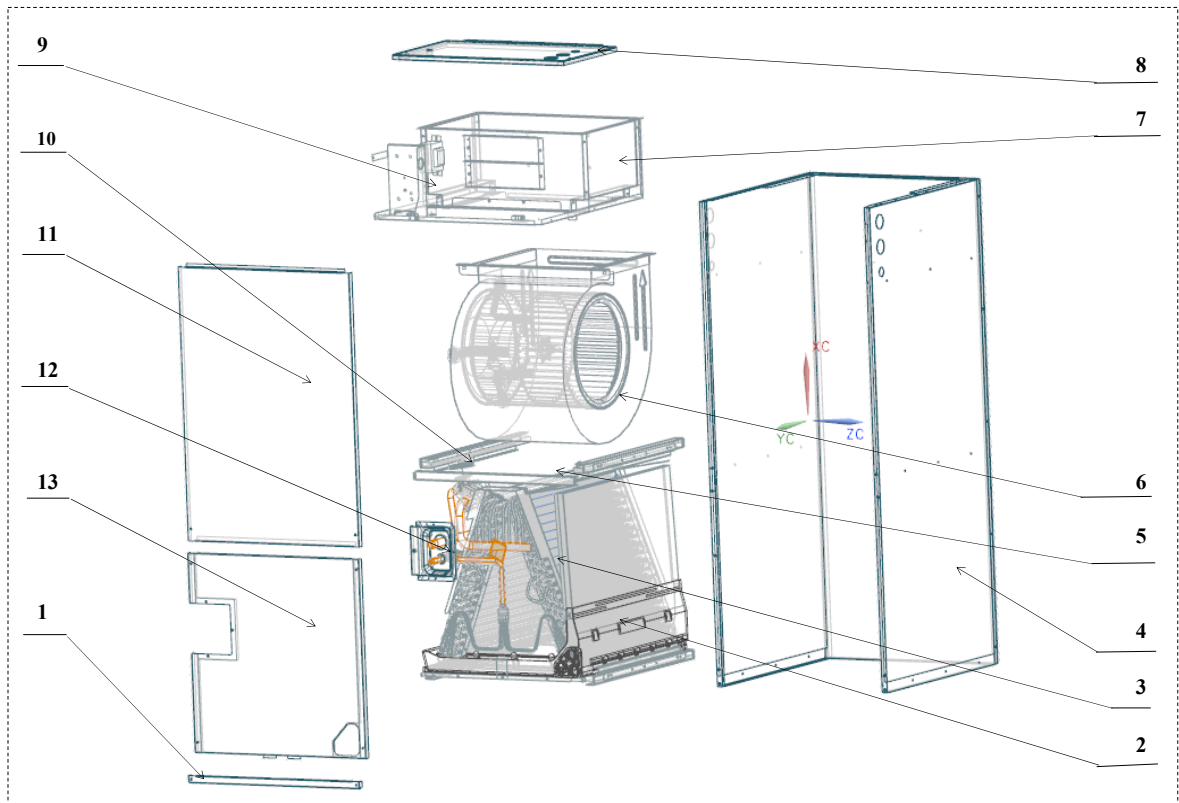
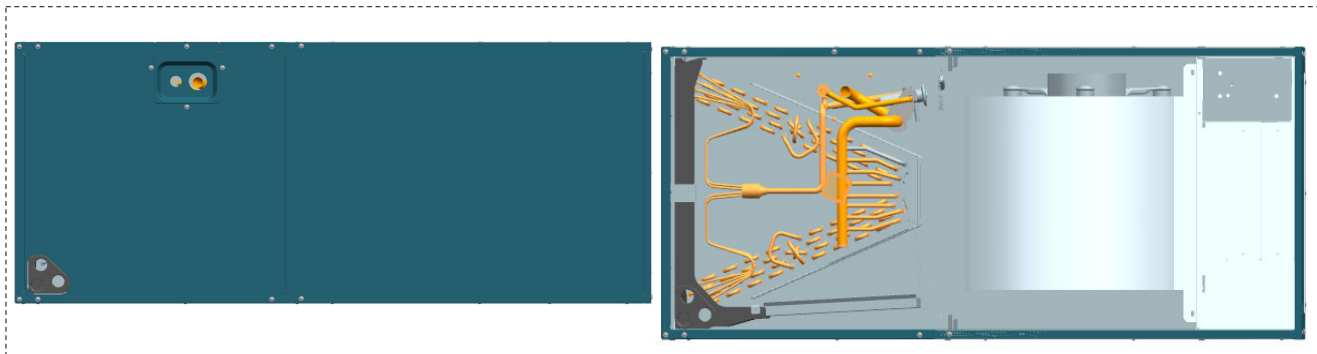


Model: LUC18  
 Power supply: 208/230V\_1Ph\_60HZ

# ComfortStar®



No.	Part Name	Quantity	Sale code	BOM code	Remark
1	Filter Cover plate	1		801234590089	
2	Water pan components	1		801232590060	
2.1	Water pan# 1	1		801134590002	
2.2	Water pan# 2	1		800734590102	
2.3	Water pan fixed block	1		801234590091	
2.4	Water pan brace	2		801234190193	
3	Evaporator components	1		801532590016	
3.1	Air header Assembly	1		801632590036	
3.2	Diverter Assembly	1		801632590037	
3.3	Evaporator	2		801534590016	
3.4	Evaporator Baffle	1		801234590094	
3.5	Evaporator Baffle	1		801232590068	

3.6	Evaporator Water Baffle #1	2		801234590095		
3.7	Evaporator Water Baffle #2	1		801234590096		
3.8	Evaporator Water Baffle #3	1		801234590097		
3.9	Evaporator Fixing Plate #1	1		801234590098		
3.10	Evaporator Fixing Plate #2	1		801234590099		
3.11	Evaporator Junction Plate	1		801234590113		
4	Chassis assembly	1		801233590133		
5	Supporter	2		801234590090		
6	Fan components	1		802432590013		
6.1	Right Volute Wind Wheel	1		801200200040		
6.2	Indoor Motor	1		802400400732		
7	Fan Motor Fixing plate assembly	1		801239390034		
7.1	Fan Motor Fixing plate	1		801239390035		
7.2	Wind Wheel Fixed Block	2		801234590106		
7.3	Fixed plate on air duct	1		801239390037		
7.4	Stator	2		801239390036		
7.5	air duct left stationary plate	1		801239390025		
7.6	air duct right stationary plate	1		801239390026		
8	Electric control cover assembly	1		801233590139		
9	Electronic Control Components	1		803332590035		
9.1	Electronic Control Mounting Plate	1		801234590202		
9.2	Main Board	1		803300301031		
9.3	Transformer	1		802300200079		
10	Water pan supporter assembly	4		801234590083		
11	Upper side plate assembly	1		801233590135		
12	Pipe Cover plate assembly	1		801234590081		
13	Lower side plate assembly	1		801233590137		