

SUBMITTAL DATA SHEET

ComfortStar®

9K

Location: _____ Engineer: _____ Submitted to: _____ Submitted by: _____ Reference: _____	Approval: _____ Date: _____ Construction: _____ Unit #: _____ Drawing #: _____
------------------------------------------------------------------------------------------------------	--------------------------------------------------------------------------------------------

Set Model	32AC09CD25 / 32AC09CD35
Certified	AHRI  UL 



Performance data

Power supply	V-Ph-Hz	208/230V, 1Ph, 60Hz
Capacity	Btu/h	8800/8700
EER	W/W	12.8
Input	W	690/680
Current	A	3.7/4.0

Heating(PTC)

Capacity	Btu/h	10900/8900
Input(Heater)	W	3500/2897
Current	A	15.3/13.7

Heating(PTC) optional 2500W

Capacity	Btu/h	7800/6300
Input(Heater)	W	2580/2150
Current	A	11.3/10.3

Heating(Heat pump)(Standard conditions)

Indoor side fan motor

Model		ZKFP-25-8-157L
Cooling Speed(hi/lo)		1110/930
Heating Speed(hi/lo)	r/min	1110/1020
Insulation class		B
Waterproofing class		IP20

Outdoor side fan motor

Model		YKT-37-4-203L
Input	W	71
Capacitor	uF	3
Speed(hi/mi/lo)	r/min	1365
Capacitor class		S3
Insulation class		B

Air flow and noise level

Indoor side air flow(Hi/Mi/Lo)	m3/h	663/0/535
Indoor side noise level (Hi/Mi/Lo)	dB(A)	51/0/50.5

Capacity	Btu/h	/
Input	W	/
Current	A	/
COP	W/W	/

Electrical

Starting current	A	33.9
Starting current optional 2500W	A	45.9
Plug type		LCDI(6-20P)
Plug type optional 2500W		LCDI(6-15P)

Compressor

Model		KSN66N11VBZB1
Type		ROTARY
Brand		GMCC
Capacity	W	2380/2410
Input	W	588/595
Rated current	A	2.80/2.56
Locked rotor Amp(LRA)	A	17
Thermal protector		UP3-AOL
Thermal protector position		INTERNAL
Capacitor	uF	20
Refrigerant oil/oil charge	ml	VG68/270

Unit dimension

Dimension 1 (no sleeve, no rear grille, no rear net)			
Model	W(inch)	D(inch)	H(inch)
32AC07CD25 / 32AC07CD35	42	20.9	15.9
32HP07CD25 / 32HP07CD35	42	20.9	15.9
32AC09CD25 / 32AC09CD35	42	20.9	15.9
32HP09CD25 / 32HP09CD35	42	20.9	15.9
32AC09CD25 / 32AC09CD35	42	20.9	15.9
32HP09CD25 / 32HP09CD35	42	20.9	15.9
32AC09SD35 / 32HP09SD35	42	20.9	15.9
32AC12CD35 / 32AC12CD50	42	20.9	15.9
32HP12CD35 / 32HP12CD50	42	20.9	15.9
32AC12CD35 / 32AC12CD50	42	20.9	15.9
32HP12CD35 / 32HP12CD50	42	20.9	15.9
32AC12SD35 / 32HP12SD35	42	20.9	15.9
32AC15CD35 / 32AC15CD50	42	20.9	15.9
32HP15CD35 / 32HP15CD50	42	20.9	15.9

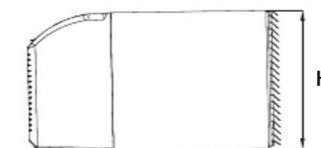
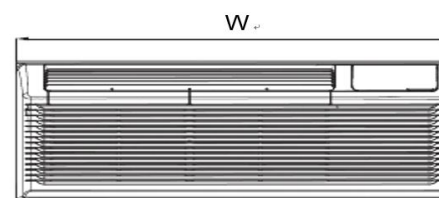
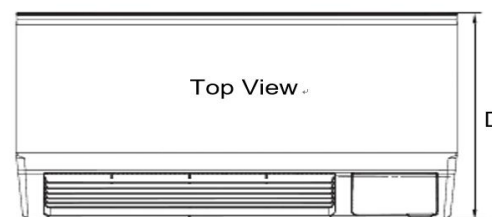
Outdoor side noise level(Hi)	dB(A)	63
------------------------------	-------	----

System data

Refrigerant type (R32)	Refrigerant type	R32
	kg	0.5
	oz(1kg=35.274oz)	17.64
Design pressure(145psi=1MPa)(L/H)	psi	300/580

Dimension and Weight

Dimension(W*D*H)	mm	1067x532x406
	in	42.01x20.94x15.98
Packing (W*D*H)	mm	1130x625x490
	in	44.49x24.61x19.29
Net/Gross weight	kg	46/50
	lb	101.41/110.23



Dimension 1 (include sleeve, rear grille, and rear net)			
Model	W(inch)	D(inch)	H(inch)
32AC07CD25 / 32AC07CD35	42	23.9	16
32HP07CD25 / 32HP07CD35	42	23.9	16
32AC09CD25 / 32AC09CD35	42	23.9	16
32HP09CD25 / 32HP09CD35	42	23.9	16
32AC09CD25 / 32AC09CD35	42	23.9	16
32HP09CD25 / 32HP09CD35	42	23.9	16
32AC09SD35 / 32HP09SD35	42	23.9	16
32AC12CD35 / 32AC12CD50	42	23.9	16
32HP12CD35 / 32HP12CD50	42	23.9	16
32AC12CD35 / 32AC12CD50	42	23.9	16
32HP12CD35 / 32HP12CD50	42	23.9	16
32AC12SD35 / 32HP12SD35	42	23.9	16
32AC15CD35 / 32AC15CD50	42	23.9	16
32HP15CD35 / 32HP15CD50	42	23.9	16