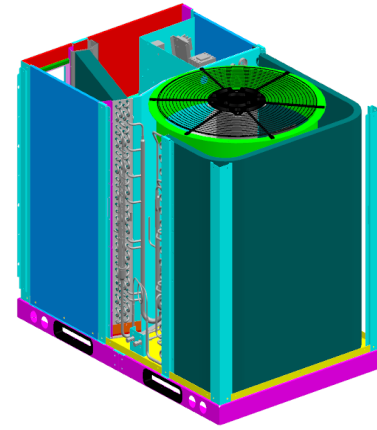
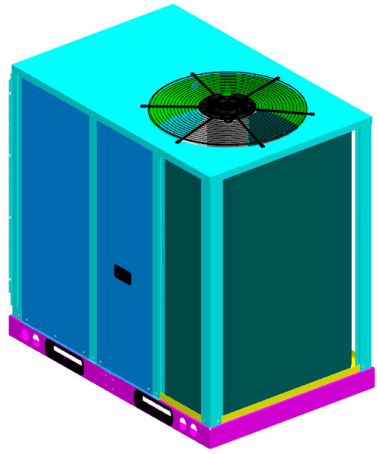
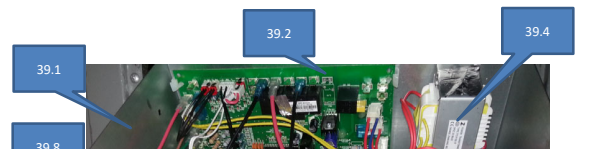
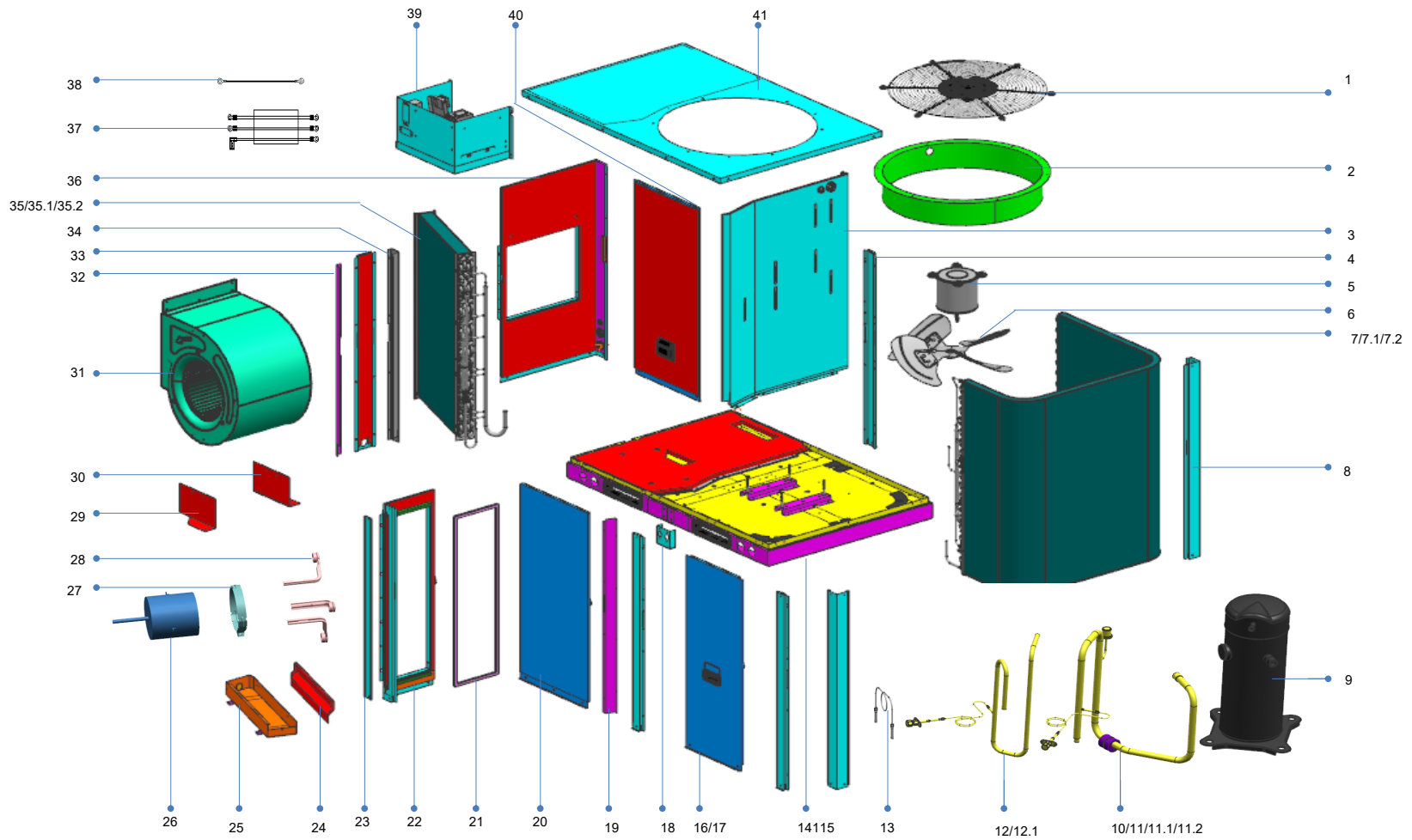
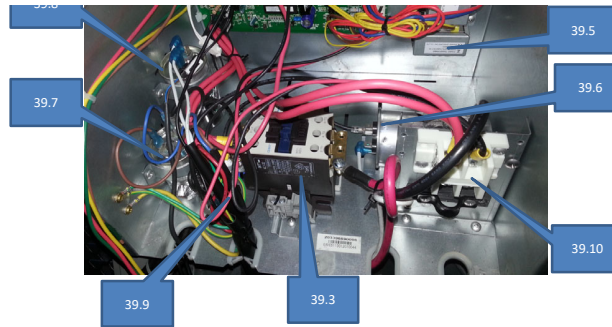


model CCRT36-1

Power 208-230V-60Hz-1Ph







| No. | Part Name | Quantity | BOM code | Price(\$\$) | Remark |
|------|-----------------------------------|----------|--------------|-------------|--------|
| 1 | Net | 1 | 201296190004 | | |
| 2 | Ring | 1 | 201296190007 | | |
| 3 | Partition board ass'y | 1 | 201296090787 | | |
| 4 | Former pole | 3 | 201296090088 | | |
| 5 | Motor | 1 | 202400400126 | | |
| 6 | Axial flow fan | 1 | 201296190003 | | |
| 7 | Condenser ass'y | 1 | 201596090114 | | |
| 7.1 | Condenser inlet pipe ass'y | 1 | 201696090961 | | |
| 7.2 | Condenser output pipe ass'y | 1 | 201696090960 | | |
| 8 | Left pole | 2 | 201296090089 | | |
| 9 | Compressor | 1 | 201401600620 | | |
| 10 | Clump weight | 1 | 202700200958 | | |
| 11 | Suction pipe ass'y | 1 | 201696091051 | | |
| 11.1 | Pressure switch | 1 | 202301820021 | | |
| 11.2 | Pipe joint | 1 | 201601200011 | | |
| 12 | Discharge pipe ass'y | 1 | 201696091049 | | |
| 12.1 | Pipe joint | 1 | 201601200011 | | |
| 13 | Capillary ass'y | 1 | 201696091054 | | |
| 14 | Base ass'y | 1 | 201296590184 | | |
| 15 | Board | 4 | 201196190010 | | |
| 16 | Rear cover ass'y | 1 | 201296090065 | | |
| 17 | Handle | 2 | 201148700003 | | |
| 18 | Installation board | 1 | 2012960A0205 | | |
| 19 | Rear cover ass'y | 1 | 201296090070 | | |
| 20 | Evaporator bracket I ass'y | 1 | 201296090072 | | |
| 21 | Filter | 1 | 201196090001 | | |
| 22 | Cover | 1 | 201296090066 | | |
| 23 | Filter shutter | 1 | 201296090064 | | |
| 24 | Drainage pan waterproof board | 1 | 201296090117 | | |
| 25 | Drainage pan | 1 | 201296090090 | | |
| 26 | Motor | 1 | 202400400653 | | |
| 27 | Motor bracket II | 1 | 201270390273 | | |
| 28 | Motor bracket I | 3 | 201270390288 | | |
| 29 | Supporter boarding II | 1 | 201296090061 | | |
| 30 | Supporter boarding I | 1 | 201296090062 | | |
| 31 | Centrifugal Fans | 1 | 201200300061 | | |
| 32 | Evaporator bracket III ass'y | 1 | 201296090063 | | |
| 33 | Cover | 1 | 201296090075 | | |
| 34 | Evaporator support board ass'y II | 1 | 201296090788 | | |
| 35 | Evaporator ass'y | 1 | 201596090116 | | |
| 35.1 | Evaporator inlet pipe ass'y | 1 | 201696090972 | | |
| 35.2 | Evaporator output pipe ass'y | 1 | 201696091057 | | |
| 36 | Cover | 1 | 201296090080 | | |
| 37 | Compressor wire joint ass'y | 1 | 202496090035 | | |
| 38 | Ground wire | 1 | 202402150994 | | |

| | | | | | | |
|-------|--|--------------------------|-----|--------------|--|--|
| 39 | | E-part box ass'y | 1 | 203396090086 | | |
| 39.1 | | E-part box | 1 | 201296090108 | | |
| 39.2 | | Main control board ass'y | 1 | 201396190002 | | |
| 39.3 | | AC contactor | 1 | 202300830082 | | |
| 39.6 | | Compressor capacitor | 1 | 202401000889 | | |
| 39.7 | | Capacitor | 1 | 202401000883 | | |
| 39.8 | | Compressor capacitor | 1 | 202401000893 | | |
| 39.9 | | Terminal block | 1 | 202301450122 | | |
| 39.10 | | Wire joint | 1 | 202301450115 | | |
| 40 | | Front cover plate ass'y | 1 | 201296090197 | | |
| 41 | | Top cover ass'y | 1 | 201296090086 | | |
| 42 | | Filter | 1 | 2011960A0001 | | |
| 43 | | Refrigerant | 1.6 | 200500100003 | | |
| | | | | | | |
| | | | | | | |