



Submittal

Split System Cooling

CDP60-15

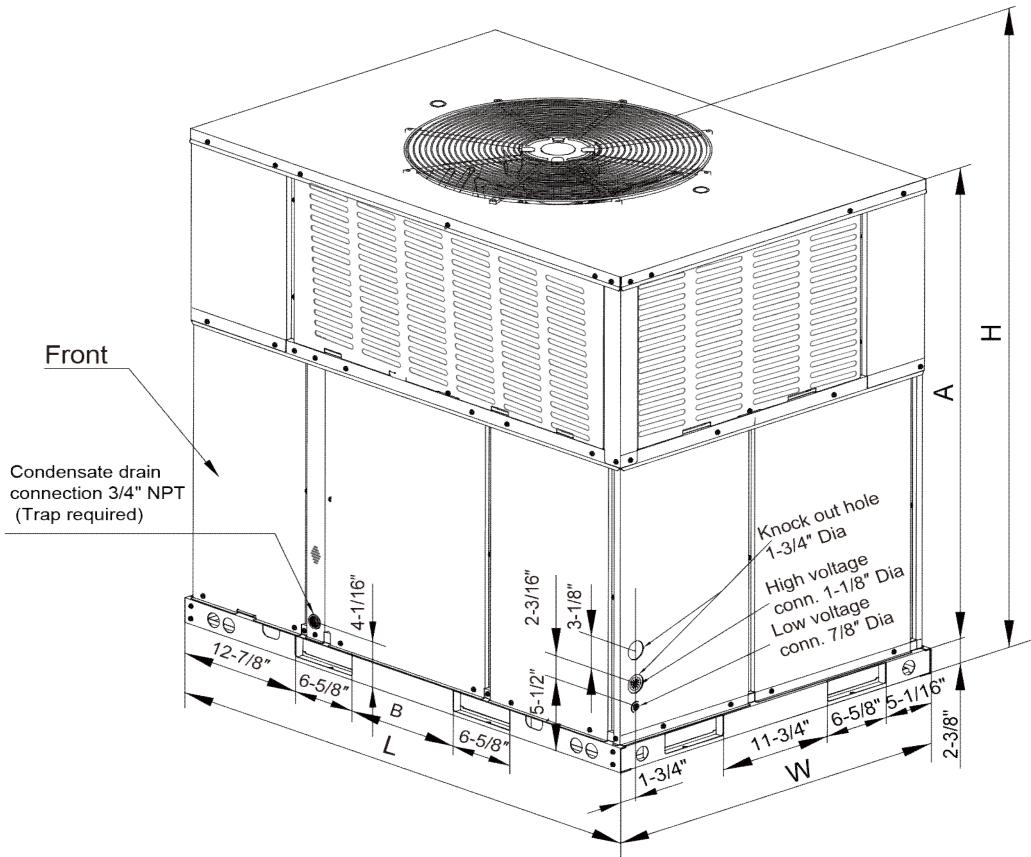
Location: _____
Engineer: _____
Submitted to: _____
Submitted by: _____
Reference: _____

Approval: _____
Date: _____
Construction: _____
Unit # : _____
Drawing # : _____



Note: "Graphics in this document are for representation only. Actual model may differ in appearance."

Unit dimension



Unit Dimension	24K	36K	48K	60K	61K
Length(in.)	50-11/16	50-11/16	50-9/16	50-9/16	50-9/16
Width(in.)	35-1/16	35-1/16	46-13/16	46-13/16	46-13/16
Height(in.)	46-13/16	46-13/16	51-7/16	51-7/16	51-7/16



Specification

Model		CDP60-15
NOMINAL CAPACITY	Cooling (BTU/h)	57000
	Heating (BTU/h)	57000
ELECTRICAL DATA	Voltage / Phase (60 Hz)	208/230 / 1
	Min. / Max. Voltage	187/253
	MCA	38.4
	MOP	50
COMPRESSOR	Type	Scroll
	RLA	26
	LRA	127.9
OUTDOOR FAN MOTOR	Motor Type	PSC
	Capacitor(uF)	15
	Horsepower (HP)	1/3
	Full Load Amps (FLA)	1.9
	Rated RPM	1050
INDOOR BLOWER MOTOR	Motor Type	PSC
	Capacitor(uF)	20
	Horsepower (HP)	3/4
	Full Load Amps (FLA)	4
	Rated RPM	990
REFRIGERATION SYSTEM	Refrigerant Control	Orifice
	Refrigerant Charge (lbs. - oz.)	11/14
OPERATION RANGE	Cooling(°F)	55-115
	Heating(°F)	5-86
SOUND POWER (DB)		78
Dimensions and Weight	LxWxH(Inch)	50-9/16x46-13/16x51-7/16
	NET WT (LBS.)	568
	Gross WT (LBS.)	607

ComfortStar®

12201 N W 107th Avenue
Miami, FL 33178
1.866.524.9898 Toll Free
305.500.9898 Office
305.500.9896 Fax
<http://www.comfortstarusa.com>



The AHRI mark indicates Comfortstar participating in the AHRI Certification program. Visit ahridirectory.org for verification of individual certified products. Comfortstar reserves the right to change design and specs without notice. Comfortstar has a policy of update the data continuously. We are committed to using environmentally conscious print practices.

CDP60-15 20th Feb 2023
Supersedes CDP60-15 (Feb.2023)

© 2023 ComfortStar