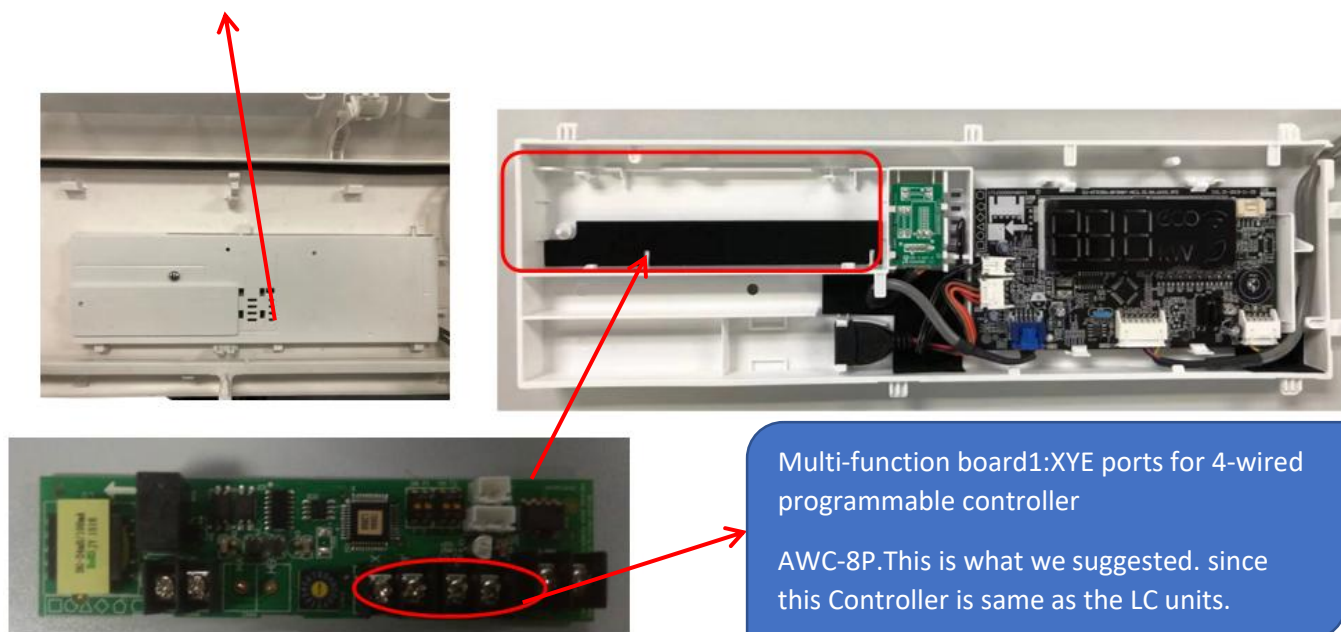


Multi-Function Board AWC-8P-CHF

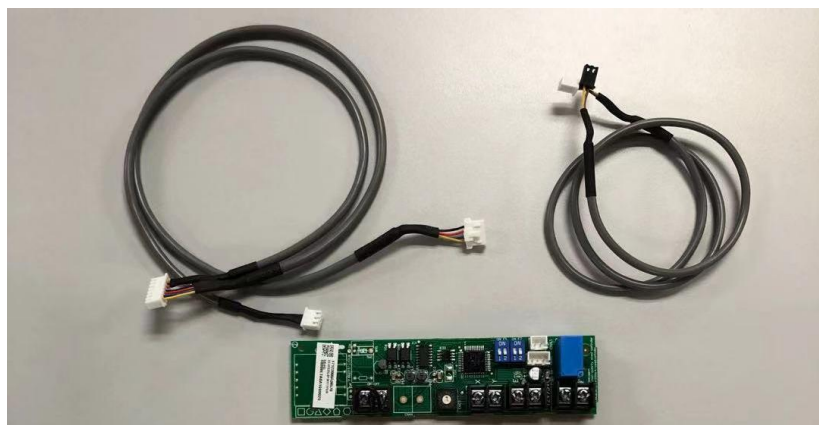
Technical Bulletin No. TB221202-02

1. Installation position.

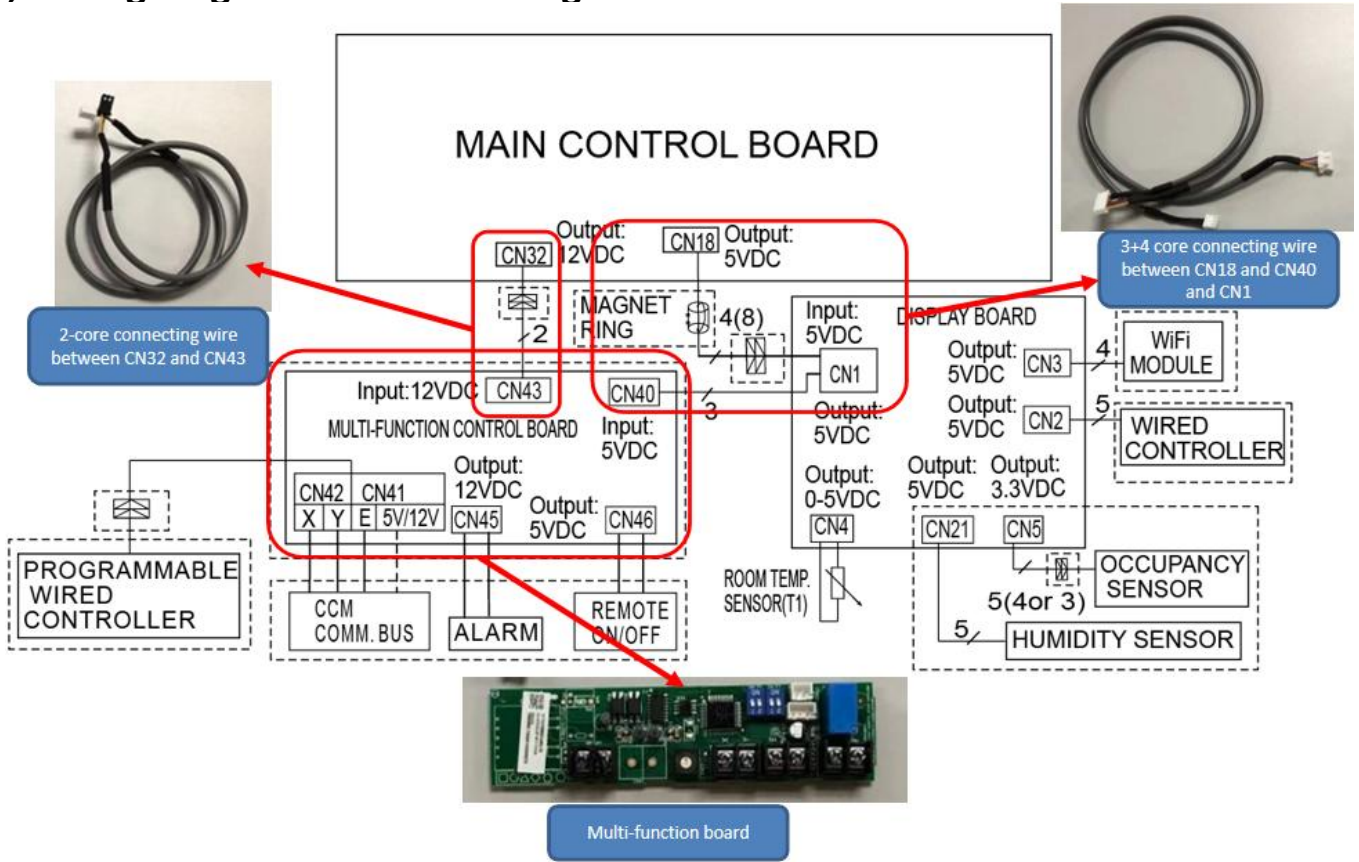
The multi-function board of CHF is installed in the back of the panel, there is no need for additional holder or bracket to fix it.



2. Multi-function board package

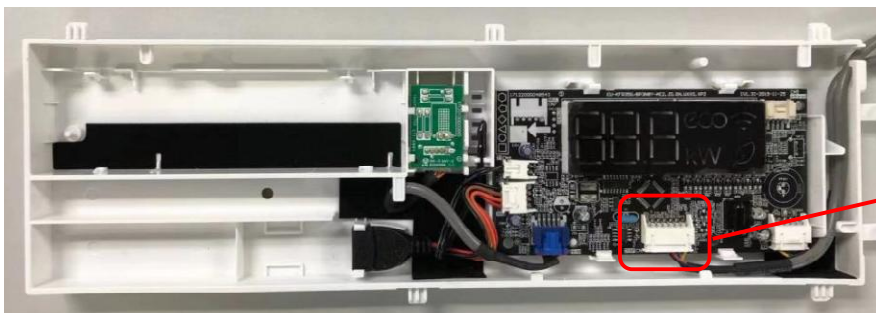


3, Wiring diagram and connecting

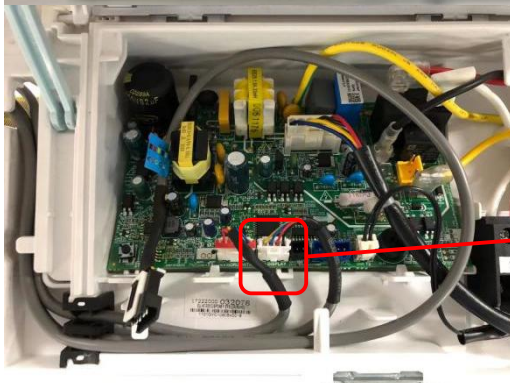


Wiring diagram and connecting for multi-function board

4. Installation

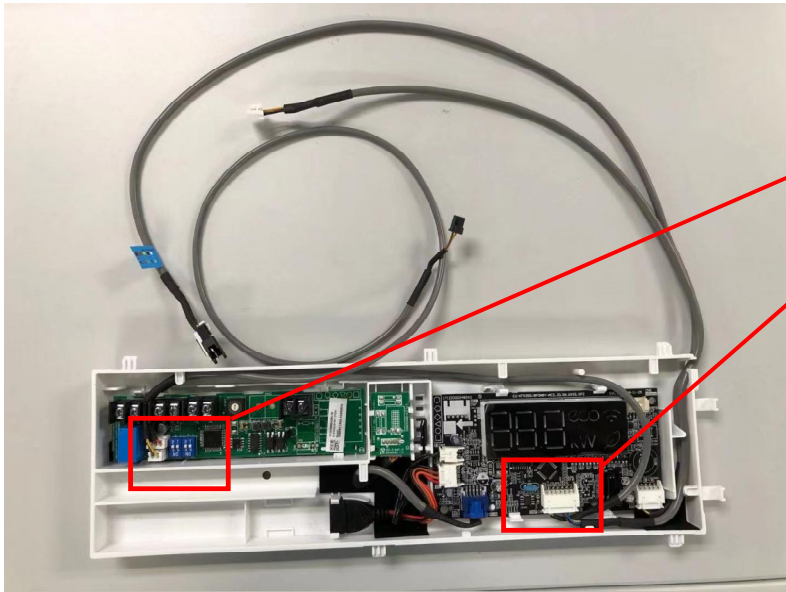


1. Unplug the wire at CN1 port on the display board.



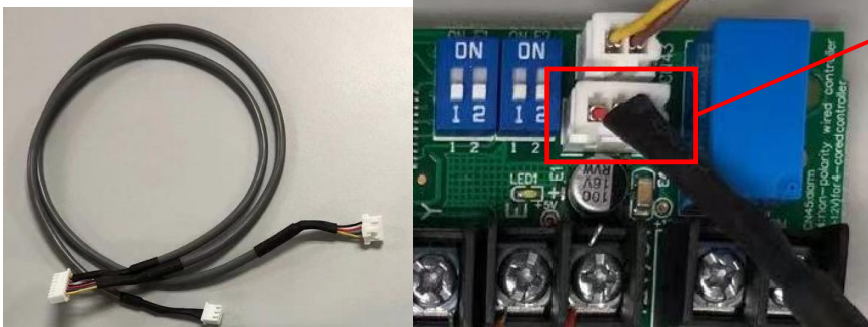
2. Unplug the wire at CN18 port on the main control board

TECHNICAL BULLETIN

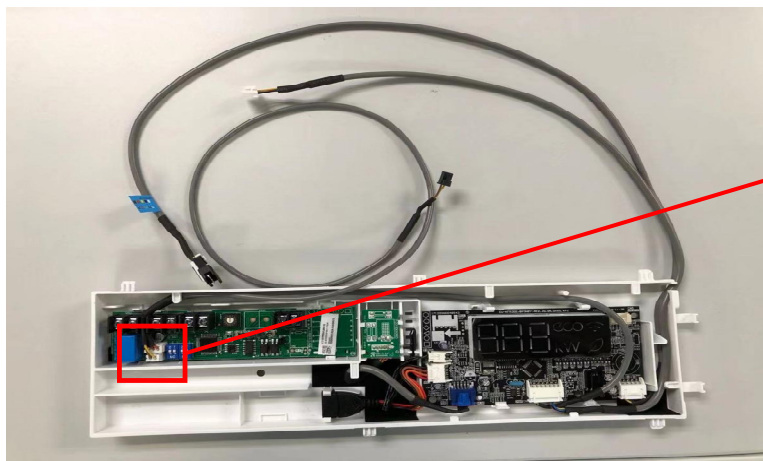


3. Plug the 3+4 core connecting wire at port CN1 on the display board.

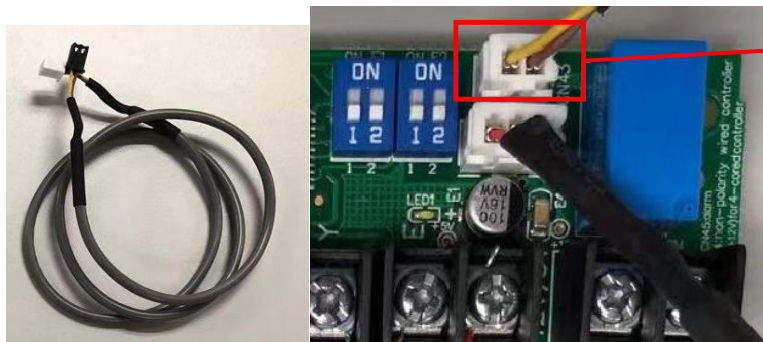
Plug the 3 core wire of 3+4 core connecting wire at port CN40 on the multi-function board.



CN40



4. Plug the 2 core connecting wire at port CN43 on the multi-function board.



CN43

TECHNICAL BULLETIN



5.1 Plug the 4 core wire of 3+4 core connecting wire at port CN18 on the main control board.

5.2 Plug the 2 core connecting wire at port CN32 on the main control board.

CN18

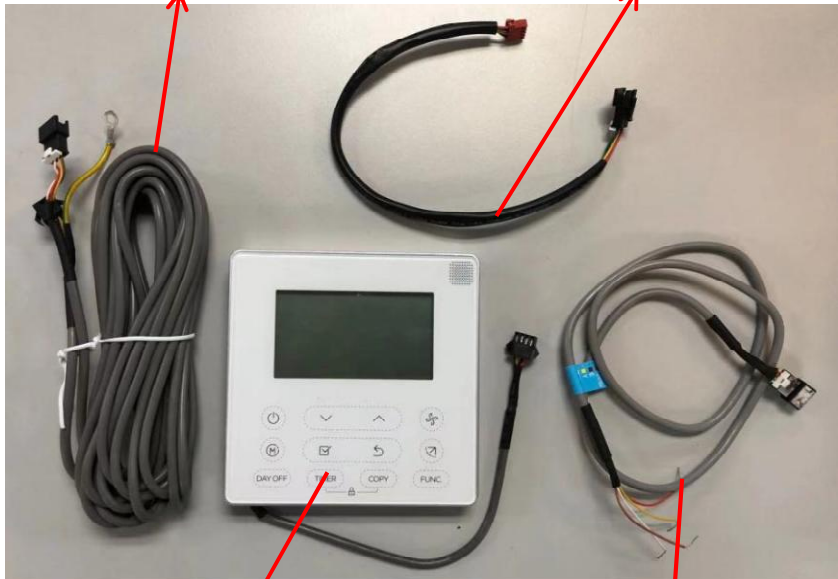
CN32



5, Connecting wired programmable controller

6m/20ft Connecting wire floor

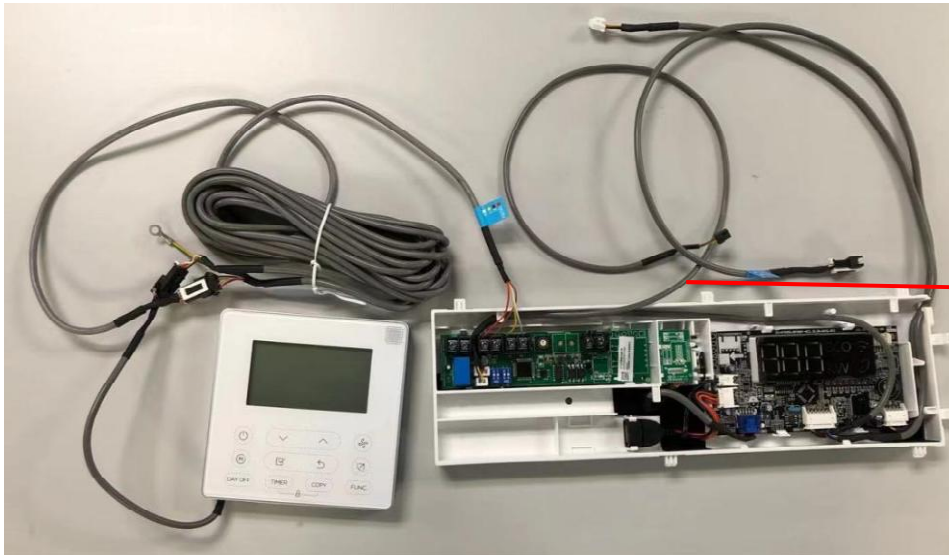
Connecting wire to Ducted /Cassette/Ceiling



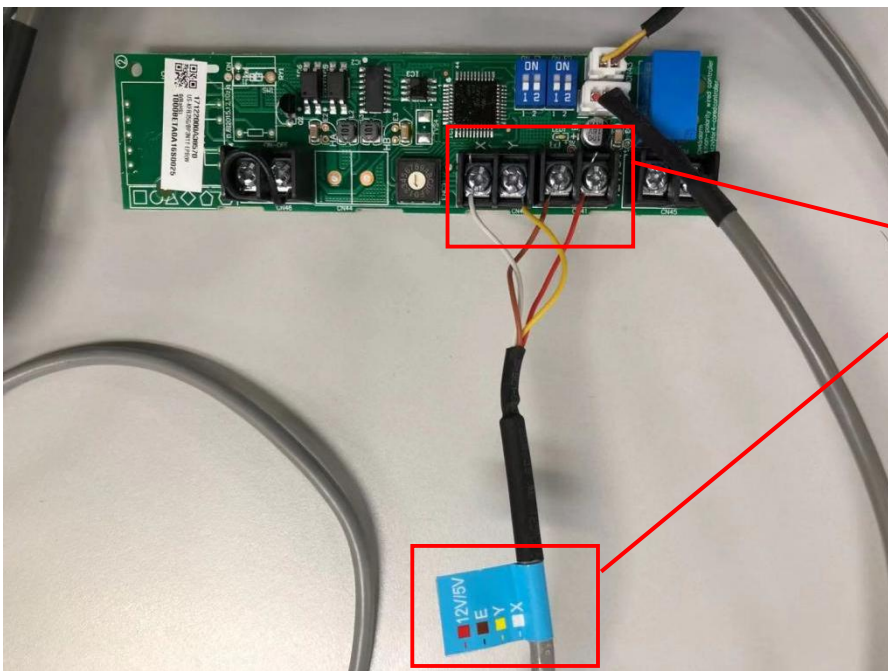
4 core wired programmable wired controller. AWC-7P

Connecting wire to multi-function board

TECHNICAL BULLETIN



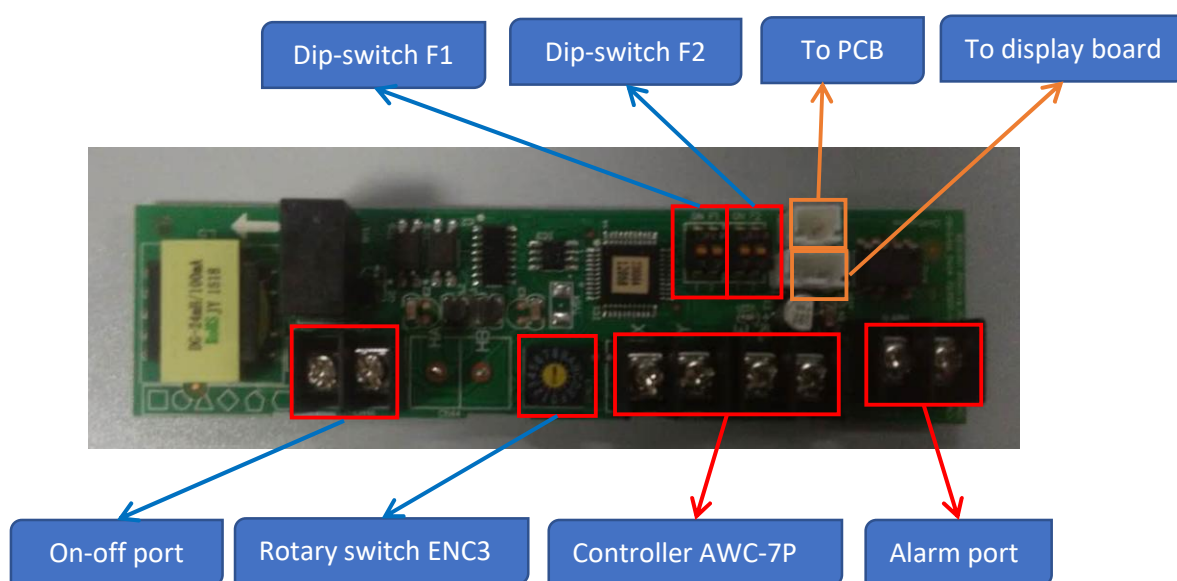
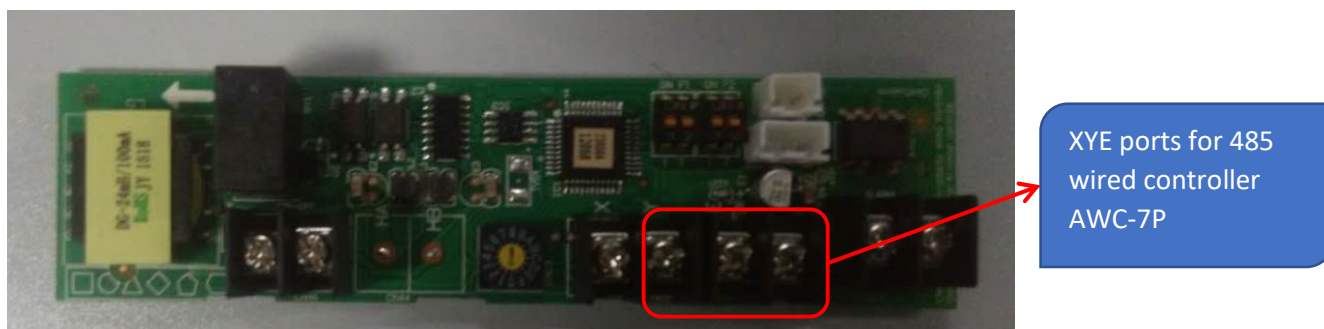
Connecting wire to
multi-function board



X - White
Y - Yellow
E - Brown
12V/5V - Red

6. The explanation of ports on multi-function board





on-off\ alarm\ Controller AWC-7P



Note:

- 1) Rotary switch ENC3 and Dip-switch F1 is for Net address setting;
- 2) Dip switch F2 is for On-off setting

7. The explanation of F2 port on multi function board

Picture	Dip-switch 1	Dip-switch 2	ON-OFF port	Unit's Operation
	ON	ON	<ul style="list-style-type: none"> ✓ ON-OFF port works as an ON/OFF button. ✓ By connecting the port, 'OFF' signal is sent to switch off the unit. You can switch on the unit with remote controller. ✓ By disconnecting the port, 'ON' signal is sent to switch on the unit. You can switch off the unit with remote controller. 	Restart with auto mode, 24° C
	ON	OFF	<ul style="list-style-type: none"> ✓ ON-OFF port works as an ON/OFF button. ✓ By disconnecting the port, 'OFF' signal is sent to switch off the unit. You can switch on the unit with remote controller. ✓ By connecting the port, 'ON' signal is sent to switch on the unit. You can switch off the unit with remote controller. 	Restart with auto mode, 24° C
	OFF	OFF	<ul style="list-style-type: none"> ✓ When ON-OFF port is connected, unit shows CP and can't work. And you can not control the unit with remote controller. ✓ When ON-OFF port is disconnected, unit works normally. And you can control the unit with remote controller. 	Restart with previous setting
	OFF	ON	<ul style="list-style-type: none"> ✓ When ON-OFF port is connected, unit works normally. And you can control the unit with remote controller. ✓ When ON-OFF port is disconnected, unit shows CP and can't work. And you can not control the unit with remote controller. 	Restart with previous setting

Note:

Multi-function board is compatible with WIFI and basic wire controller-AWC-2, because WIFI and AWC-2 function are connected with display board.

TECHNICAL BULLETIN

