



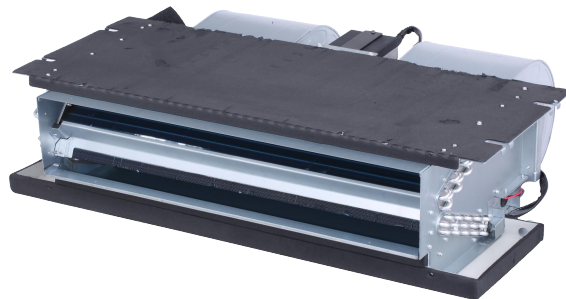
Submittal

Split System Cooling

CHX24CD

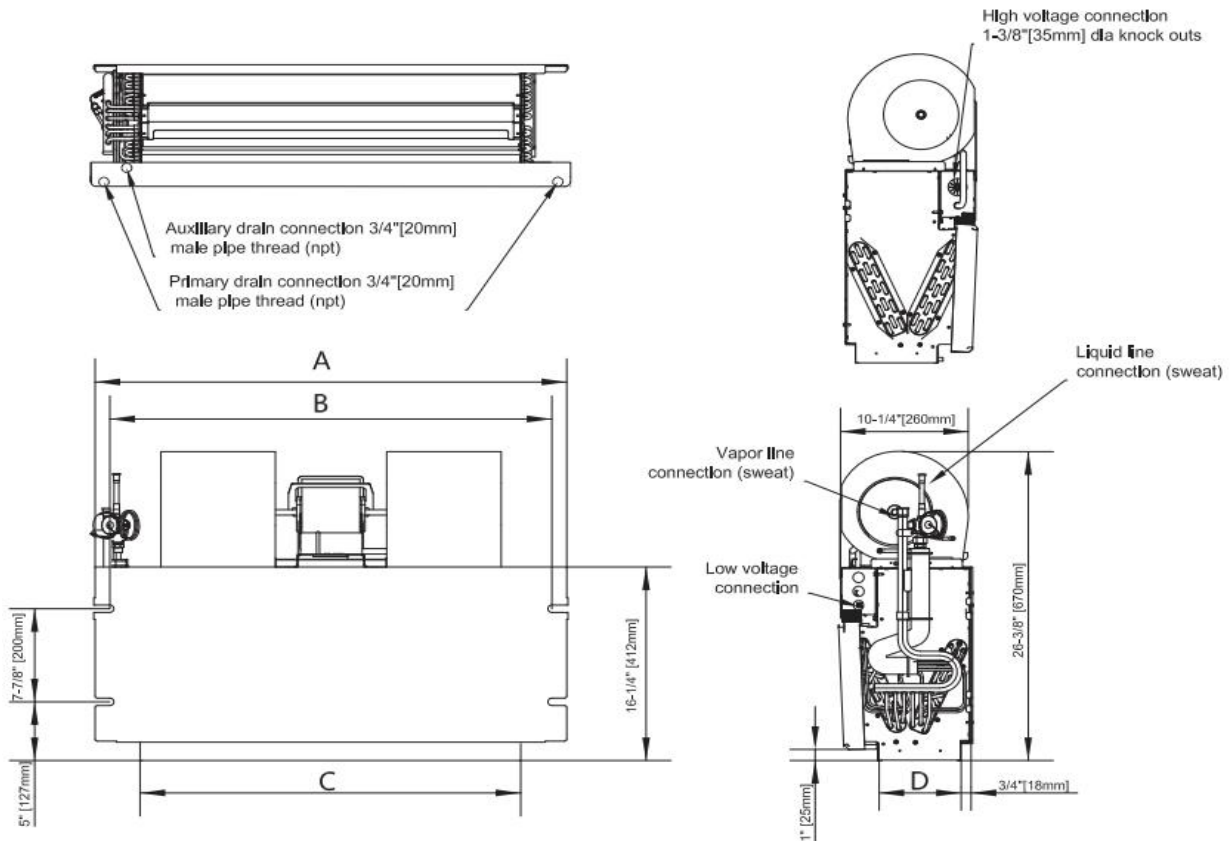
Location: _____
Engineer: _____
Submitted to: _____
Submitted by: _____
Reference: _____

Approval: _____
Date: _____
Construction: _____
Unit # : _____
Drawing # : _____



Note: " Graphics in this document are for representation only. Actual model may differ in appearance."

Unit dimension



Model Size	Dimensions- inches [mm]				Unit Operating Weight lbs (kg)
	A	B	C	D	
18	37-1/4 [946]	34-11/16 [881]	30 [762]	6-1/2 [165]	75 (34)
24	37-1/4 [946]	34-11/16 [881]	30 [762]	6-1/2 [165]	75 (34)
30	49-1/4 [1251]	46-11/16 [1186]	42 [1067]	6-1/2 [165]	95 (43)
36	49-1/4 [1251]	46-11/16 [1186]	42 [1067]	6-1/2 [165]	95 (43)



Specification

MODEL	CHX24CD
NOMINAL RATING	
External Static	45
ELECTRICAL DATA	
Voltage / Phase(60Hz)	208/230/1
Min./ Max. Voltage	187/253
Min. Circuit Amps	3.3
Max. Overcurrent Protection	15
FAN MOTOR	
Motor Type	ECM
Capacitor (uF)	/
Horsepower(HP)	1/3
Rated RPM	1050
Full Load Amps (FLA)	2.6
FAN BLOWER	
Material	Metal
Type	Centrifugal
Diameter(in.)	7
Height(in.)	8
EVAPORATOR COIL	
Type	Tube & Fin
Tube Material	Aluminum
Tube Size(in.)	9/32
SOUND POWER(dB)	57
REFRIGERANT CONNECTION SIZE	
Liquid Line Size (O.D.)	3/8
Suction Line Size (O.D.)	3/4

Outdoor Unit	Indoor Unit	Cooling Capacity	EER2	SEER2	Heating Capacity	HSPF2
BAR5-24-15	CHX24CD	23000	11.7	14.3	/	/
BAH5-24-15	CHX24CD	23000	11.7	14.3	23000	7.5
MAH5-24-410	CHX24CD	23000	11.2	13.4	/	/

ComfortStar®

12201 N W 107th Avenue
Miami, FL 33178
1.866.524.9898 Toll Free
305.500.9898 Office
305.500.9896 Fax
<http://www.comfortstarusa.com>



The AHRI mark indicates Comfortstar participating in the AHRI Certification program. Visit ahridirectory.org for verification of individual certified products. Comfortstar reserves the right to change design and specs without notice. Comfortstar has a policy of update the data continuously. We are committed to using environmentally conscious print practices.

CHX24CD 1th Feb. 2024
Supersedes CHX24CD (Feb.2024)

© 2024 ComfortStar