

ComfortStar®

Air Conditioning & Heating Products

RESIDENTIAL LINE PRODUCT

1.5 Tons up to 5 Tons
14.3 and 15.2 SEER2

SEER2



Comfort, it's in our name



📍 12201 N. W. 107th Avenue | Medley, FL 33178

☎ Toll Free: 1-866-524-9898 | 📞 Phone: 1-305-500-9898 | 📠 Fax: 1-305-500-9896 | ✉ Email us: info@comfortstarusa.com

www.comfortstarusa.com 🌐

TABLE OF CONTENTS



03	BAR5 Series Condensing Units	18	CWM5 Specifications
04-05	BAR5 Specifications	19	CWM5 Unit Dimension
06	BAR5 Unit Dimension	20	CWM5-R Series Wall Mounted PSC Air Handlers
07	BAH5 Series Heat Pump Condensing Units	21	CWM5-R Specifications
08-09	BAH5 Specifications	22	CHX(CD) Series Ceiling-Mounted Concealed Fan Coil Units
10	BAH5 Unit Dimension	23	CHX(CD) Specifications
11	LUC5 Series Multi-Position Air Handlers	24-27	Match Up Table
12	LUC5 Specifications	28	CPH Series Heat Pump Package Units
13	LUC5 Unit Dimension	29-30	CPH Specifications
14	LCM5 Series Multi-Position Air Handlers	31	CPH Unit Dimension
15	LCM5 Specifications	32	CDP Series Heat Pump Package Units
16	LCM5 Unit Dimension	33-34	CDP Specifications
17	CWM5 Series Wall Mounted ECM Air Handlers	35	CDP Unit Dimension





BAR5 Series

CONDENSING UNITS

1.5 Tons up to 5 Tons

18,000 Thru
61,000 btu

UP TO
15.2 SEER2



BAR5 Series

Condensing Units
1.5 up to 5 Tons

UP TO
15.2 SEER2



FEATURES:

- R410A
- High quality condenser with inner-groove copper tube and aluminum fin.
- Service valves with sweat connections and easy-access gauge ports.
- Wire fan discharge grille.

SPECIFICATIONS

OUTDOOR UNIT		BAR5-18-15	BAR5-24-15	BAR5-30-15	BAR5-36-15
Electrical Data	Voltage / Phase (60 Hz)	208/230/1/60hz	208/230/1/60hz	208/230/1/60hz	208/230/1/60hz
	Min. / Max. Voltage	187/253	187/253	187/253	187/253
	MCA	11.6	14.6	15.8	21
	MOP	15	20	25	35
Compressor	Type	Rotary	Rotary	Rotary	Scroll
	Stage	Single	Single	Single	Single
	RLA	8	10.4	11.4	15
	LRA	35	43	58	75
	Crankcase Heater	NO	NO	NO	NO
Condenser Coil	Type	Tube & Fin	Tube & Fin	Tube & Fin	Tube & Fin
	Tube Size(O.D)	3/16	3/16	3/16	3/16
Fan Motor	MotorType	ECM	ECM	ECM	ECM
	Capacitor(uF)	/	/	/	/
	Horsepower (HP)	1-1/6	1-1/6	1-1/6	1-1/3
	Full Load Amps (FLA)	1.6	1.6	1.6	2.2
Outdoor Unit	Dimension(W*D*H)(inch)	23-5/8x23-5/8x24-15/16	28x28x24-15/16	28x28x33-3/16	29-1/8x29x-1/8x24-15/16
	Packing (W*D*H)(inch)	24-3/4x24-3/4x26-1/4	29-1/16x29-1/16x26-1/4	29-1/16x29-1/16x34-1/2	30-1/4x30-1/4x26-1/4
	Net/Gross weight (lbs)	117	132	156	154
Refrigeration System	Liquid Valve Size (O.D.)	3/8	3/8	3/8	3/8
	Suction Valve Size (O.D.)	3/4	3/4	3/4	3/4
	Liquid Line Size ("O.D.)	3/8	3/8	3/8	3/8
	Suction Line Size ("O.D.)	3/4	3/4	3/4	3/4
	Refrigerant Charge (lbs. - oz.)	4 LBS.-14 OZ	5 LBS.-12 OZ	7 LBS.-5 OZ	5 LBS.-9 OZ
	Superheat(°F)	9 °F	9 °F	9 °F	9 °F
Operation Temperature Range	Cooling(°F)	55-115	55-115	55-115	55-115
	Heating(°F)	/	/	/	/
Outdoor Air Flow (hi)	m3/h	3230	4500	5100	5270
Sound Power	DB	70	73	72	75



BAR5 Series

Condensing Units
1.5 up to 5 Tons

UP TO
15.2 SEER2



FEATURES:

- Factory installed high pressure switch
- AHRI/ETL
- Compact design
- Powder-painted galvanized steel cabinet.
- Steel louver coil guard.

SPECIFICATIONS

OUTDOOR UNIT		BAR5-42-15	BAR5-48-15	BAR5-60-15	BAR5-61-15
Electrical Data	Voltage / Phase (60 Hz)	208/230/1/60hz	208/230/1/60hz	208/230/1/60hz	208/230/1/60hz
	Min. / Max. Voltage	187/253	187/253	187/253	187/253
	MCA	24.9	25.2	35.1	38.9
	MOP	45	45	60	60
Compressor	Type	Scroll	Scroll	Scroll	Scroll
	Stage	Single	Single	Single	Two-stage
	RLA	18.1	18.4	26.3	29.3
	LRA	112	94	127	118
	Crankcase Heater	NO	NO	NO	NO
Condenser Coil	Type	Tube & Fin	Tube & Fin	Tube & Fin	Tube & Fin
	Tube Size(O.D.)	3/16	3/16	-	9/32
Fan Motor	Motor Type	ECM	ECM	ECM	ECM
	Horsepower (HP)	1-1/3	1-1/3	1-1/3	1-1/3
	Full Load Amps (FLA)	2.2	2.2	2.2	2.2
Outdoor Unit	Dimension(W*D*H)(inch)	29-1/8x29-1/8x33-3/16	29-1/8x29-1/8x33-3/16	29-1/8x29-1/8x33-3/16	29-1/8x29-1/8x33-3/16
	Packing (W*D*H)(inch)	30-1/4x30-1/4x34-1/2	30-1/4x30-1/4x34-1/2	30-1/4x30-1/4x34-1/2	30-1/4x30-1/4x34-1/2
	Net/Gross weight (lbs)	191	191	194	216
Refrigeration System	Liquid Valve Size (O.D.)	3/8	3/8	3/8	3/8
	Suction Valve Size (O.D.)	7/8	7/8	7/8	7/8
	Liquid Line Size ("O.D.)	3/8	3/8	3/8	3/8
	Suction Line Size ("O.D.)	7/8	7/8	11/8	11/8
	Refrigerant Charge (lbs. - oz.)	8 LBS.-1 OZ	8 LBS.-10 OZ	7 LBS.-14 OZ	10 LBS.-14 OZ
	Superheat(°F)	9 °F	9 °F	9 °F	9 °F
Operation Temperature Range	Cooling(°F)	55-115	55-115	55-115	55-115
Outdoor Air Flow (hi)	m3/h	6120	6540	6540	5830
Sound Power	DB	75	76	77	78

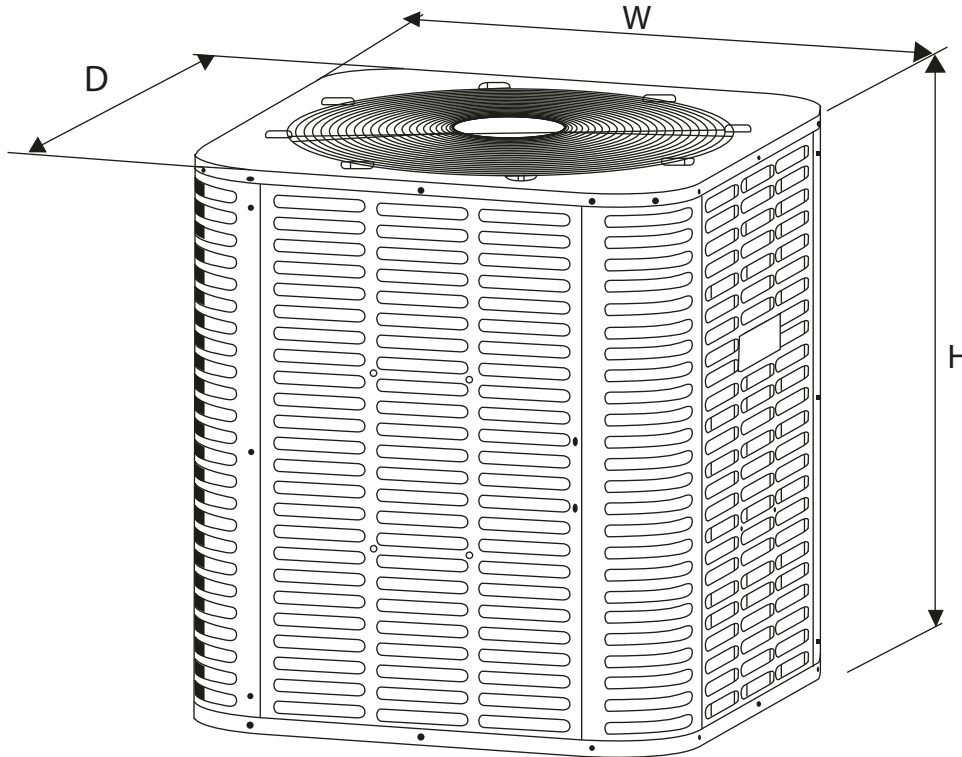


BAR5 Series

Condensing Units
1.5 up to 5 Tons

UP TO
15.2 SEER2

OUTDOOR UNIT DIMENSION



UNIT DIMENSION AND WEIGHTS

Unit Dimensions			
Model	H(inches)	W(inches)	D(inches)
18	24-15/16	23-5/8	23-5/8
24	24-15/16	28	28
30	33-3/16	28	28
36	24-15/16	29-1/8	29-1/8
42/48/60/61	33-3/16	29-1/8	29-1/8

BAH5 Series

HEAT PUMP CONDENSING UNITS

1.5 Tons up to 5 Tons

18,000 Thru
60,000 btu

UP TO
15.2 SEER2



BAH5 Series Heat Pump

Condensing Units
1.5 up to 5 Tons

UP TO
15.2 SEER2

FEATURES:

- R410A chlorine-free refrigerant.
- Energy-efficient compressor.
- Internal protection against high temperature motor overload conditions.
- High quality condenser with inner-groove copper tube and aluminum fin.
- Service valves with sweat connections and easy-access gauge ports.
- Factory-installed high pressure switch and low pressure switch.
- AHRI certified and ETL listed.
- Optional drier filter as accessory.



SPECIFICATIONS

OUTDOOR UNIT		BAH5-18-15	BAH5-24-15	BAH5-30-15	BAH5-36-15
Nominal Capacity	Cooling (BTU/h)	18,000	24,000	30,000	36,000
	Heating (BTU/h)	18,000	24,000	30,000	36,000
Electrical Data	Voltage / Phase (60 Hz)	208/230 / 1	208/230 / 1	208/230 / 1	208/230 / 1
	Min. / Max. Voltage	187/253	187/253	187/253	187/253
	MCA	13.0	15.5	17.2	23.0
	MOP	20	24	30	40
Compressor	Type	Scroll	Scroll	Scroll	Scroll
	Stage	Single	Single	Single	Single
	RLA	8	8	8	8
	LRA	48	52	72	75
	Crankcase Heater	Yes	Yes	Yes	Yes
Condenser Coil	Throttle Type	Tube & Fin	Tube & Fin	Tube & Fin	Tube & Fin
	Tube Size (O.D.)	3/16	3/16	3/16	3/16
Fan Motor	Motor Type	ECM	ECM	ECM	ECM
	Horsepower (HP)	1-1/6	1-1/6	1-1/6	1-1/3
	Full Load Amps (FLA)	1.6	1.6	1.6	2.2
Refrigeration System	Liquid Valve Size (O.D.)	3/8	3/8	3/8	3/8
	Suction Valve Size (O.D.)	3/4	3/4	3/4	3/4
	Liquid Line Size ("O.D.)	3/8	3/8	3/8	3/8
	Suction Line Size ("O.D.)	3/4	3/4	3/4	3/4
	Refrigerant Charge (lbs. - oz.)	5 LBS.-4 OZ	6 LBS.-7 OZ	6 LBS.-7 OZ	7 LBS.-2 OZ
	Superheat(°F)	9 °F	9 °F	9 °F	9 °F
Operation Range	Cooling(°F)	55-115	55-115	55-115	55-115
	Heating(°F)	5-86	5-86	5-86	5-86
Sound Power (db)		72	74	73	73



BAH5 Series Heat Pump

Condensing Units
1.5 up to 5 Tons

UP TO
15.2 SEER2

FEATURES:

- Compact design, easy installation and transportation.
- Powder-painted galvanized steel cabinet.
- Wire fan discharge grille.
- Steel louver coil guard



SPECIFICATIONS

OUTDOOR UNIT		BAH5-42-15	BAH5-48-15	BAH5-60-15	BAH5-61-15
Nominal Capacity	Cooling (BTU/h)	42,000	48,000	60,000	60,000
	Heating (BTU/h)	42,000	48,000	60,000	60,000
Electrical Data	Voltage / Phase (60 Hz)	208/230 / 1	208/230 / 1	208/230 / 1	208/230 / 1
	Min. / Max. Voltage	187/253	187/253	187/253	187/253
	MCA	26.9	29.6	34.6	38.9
	MOP	50	50	60	60
Compressor	Type	Scroll	Scroll	Scroll	Scroll
	Stage	Single	Single	Single	Two-stage
	RLA	8	8	8	29.3
	LRA	112.3	94	127.1	118
	Crankcase Heater	Yes	Yes	Yes	Yes
Condenser Coil	Throttle Type	Tube & Fin	Tube & Fin	Tube & Fin	Tube & Fin
	Tube Size(O.D.)	3/16	3/16	9/32	9/32
Fan Motor	Motor Type	ECM	ECM	ECM	ECM
	Horsepower (HP)	1-1/3	1-1/3	1-1/3	1-1/3
	Full Load Amps (FLA)	2.2	2.2	2.2	2.2
Refrigeration System	Liquid Valve Size (O.D.)	3/8	3/8	3/8	3/8
	Suction Valve Size (O.D.)	7/8	7/8	7/8	7/8
	Liquid Line Size ("O.D.)	3/8	3/8	3/8	3/8
	Suction Line Size ("O.D.)	7/8	11/8	11/8	11/8
	Refrigerant Charge (lbs. - oz.)	8 LBS.-7 OZ	8 LBS.-7 OZ	11 LBS.-5 OZ	10 LBS.-14 OZ
	Superheat(°F)	9 °F	9 °F	9 °F	9 °F
Operation Range	Cooling(°F)	55-115	55-115	55-115	55-115
	Heating(°F)	5-86	5-86	5-86	5-86
Sound Power (db)		76	76	78	79



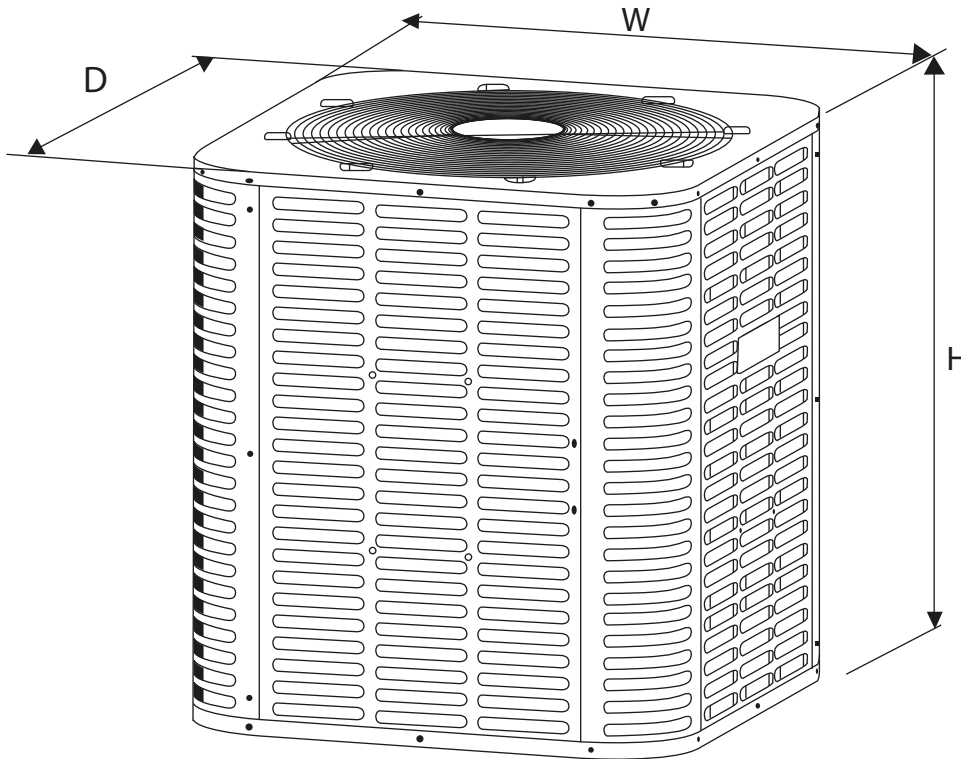
BAH5 Series Heat Pump

Condensing Units
1.5 up to 5 Tons

UP TO
15.2 SEER2



OUTDOOR UNIT DIMENSION



UNIT DIMENSION AND WEIGHTS

Unit Dimensions			
Model	H(inches)	W(inches)	D(inches)
18	24-15/16	23-5/8	23-5/8
24	24-15/16	28	28
30	24-15/16	28	28
36	33-3/16	28	28
42/48/60/61	33-3/16	29-1/8	29-1/8

LUC5 Series

MULTI-POSITION AIR HANDLERS

1.5 Tons up to 5 Tons

18,000 Thru
60,000 btu

14.3 SEER2



LUC5 Series

Multi-Position Air Handlers
1.5 Tons up to 5 Tons

14.3 SEER2

FEATURES:

- Factory sealed cabinet helps achieve 2% or less leakage rate.
- Horizontal and vertical condensate pans are standard.
- Blower wheel and coil can easily slide out for easier maintenance.
- Field Installed Heater Kits are OPTIONAL: 5/ 7.5/ 10/ 15/ 20KW
- Factory Installed Piston for metering
- 2-stage fan control
- AHRI/ETL
- Mobile Home Certification.



SPECIFICATIONS

Indoor unit		LUC5-18-15	LUC5-24-15	LUC5-36-15	LUC5-48-15	LUC5-60-15	
Power supply	Rated Voltage	V-Ph-Hz	208/230V,1Ph,60Hz	208/230V,1Ph,60Hz	208/230V,1Ph,60Hz	208/230V,1Ph,60Hz	208/230V,1Ph,60Hz
	Min. / Max. Voltage	V	187/253	187/253	187/253	187/253	187/253
Cooling	Cooling Capacity	Btu/w	18000	23600	34000	45000	54000
	EER2	Btu/w	11.7	11.7	11.7	11.7	11.2
	SEER2	Btu/w	14.3	14.3	14.3	14.3	13.8
Min. Circuit Amps		A	1.9	2.9	3.3	4.2	5.7
Max. over current protection		A	15	15	15	15	15
Indoor fan motor	Type		PSC	PSC	PSC	PSC	PSC
	Horsepower (HP)		1/5	1/4	1/2	1/2	3/4
	Full Load Amps (FLA)	A	1.5	2.3	2.6	3.3	4.5
	Rated RPM		755	903	865	925	990
Fan Blower	Material		Metal	Metal	Metal	Metal	Metal
	Type		Centrifugal	Centrifugal	Centrifugal	Centrifugal	Centrifugal
	Diameter	inch	10-5/8	13	13	13	13
	Height	inch	10-3/4	10-5/8	10-5/8	10-5/8	10-5/8
Indoor coil	Type		Tube & Fin	Tube & Fin	Tube & Fin	Tube & Fin	Tube & Fin
	Tube Material		Aluminum	Aluminum	Aluminum	Aluminum	Aluminum
	Tube Size	inch	9/32	9/32	9/32	9/32	9/32
Indoor air flow (Hi/Mi/Lo)		CFM	406/588/688	612/747/988	647/865/1082	1047/1353/1582	1424/1594/1724
Indoor noise level (Hi/Mi/Lo)		dB(A)	48/47/42	50/48/44	50/48/44	54/52/49	56/54/51
Indoor unit	Dimension(W*D*H)	inch	18-1/8x20-1/2x41-3/8	19-5/8x21-5/8x46-1/2	19-5/8x21-5/8x46-1/2	22x24x54-1/2	22x24x54-1/2
	Packing (W*D*H)	inch	20-3/4x24-3/16x42	20-3/4x25-3/8x47-1/8	20-3/4x25-3/8x47-1/8	24-11/16x27-11/16x55-3/16	24-11/16x27-11/16x55-3/16
	Net/Gross weight	lbs	108	128	128	159	161
Refrigerant piping	Liquid side	inch	3/8	3/8	3/8	3/8	3/8
	Gas side	inch	3/4	3/4	3/4	7/8	7/8
Thermostat type			Remote Control	Remote Control	Remote Control	Remote Control	Remote Control
Operating temperature range	Cooling	°F	55-115	55-115	55-115	55-115	55-115
	Heating	°F	/	/	/	/	/



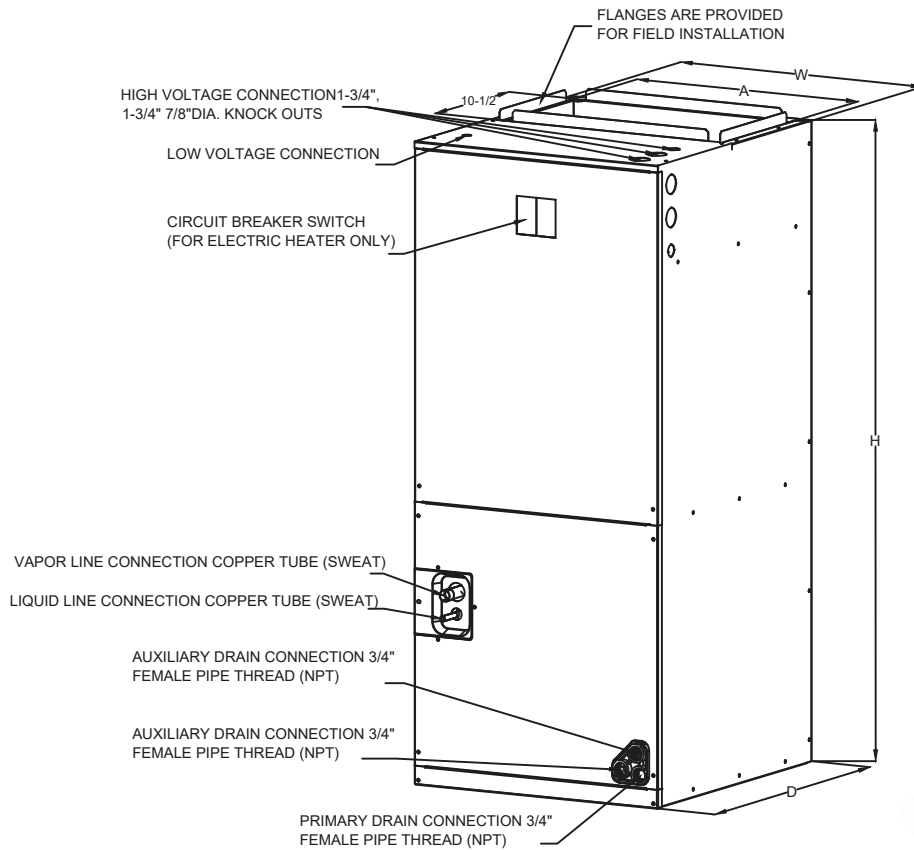
LUC5 Series

Multi-Position Air Handlers
1.5 Tons up to 5 Tons

14.3 SEER2



SPECIFICATIONS



UNIT DIMENSION AND WEIGHTS



UNIT DIMENSION AND WEIGHTS	LUC5-18-15	LUC5-24-15	LUC5-36-15	LUC5-48-15	LUC5-60-15
Height(in.)	41-3/8	46-1/2	46-1/2	54-1/2	54-1/2
Width(in.)	18-1/8	19-5/8	19-5/8	22	22
Depth(in.)	20-1/2	21-5/8	21-5/8	24	24
Weight(lbs.)	108	128	128	159	161

Heating Kit (Optional)

PART No.	DESCRIPTION
CHE2-05	5kw
CHE2-05B	5kw with breaker
CHE2-08	8kw
CHE2-08B	8kw with breaker
CHE2-10	10kw
CHE2-10B	10kw with breaker
CHE2-15B	15kw with breaker
CHE2-20B	20kw with breaker

TXV Valve

PART No.	DESCRIPTION
TR6-3T	TXV-FOR 18K - 24K
TR6-4T	TXV-FOR 36K - 42K

PART No.	DESCRIPTION
TR6-5T	TXV-FOR 48K
TR6-6T	TXV-FOR 60K

LCM5 Series

MULTI-POSITION AIR HANDLERS

2 Tons up to 5 Tons

24,000 Thru
60,000 btu

UP TO
15.2 SEER2



LCM5 Series

Multi-Position Air Handlers 2 Tons up to 5 Tons

UP TO
15.2 SEER2



FEATURES:

- Factory sealed cabinet helps achieve 2% or less leakage rate.
- Horizontal and vertical condensate pans are standard.
- Blower wheel and coil can easily slide out for easier maintenance.
- Field Installed Heater Kits are
OPTIONAL: 5/ 7.5/ 10/ 15/ 20KW
- Multi-speed, constant torque, ECM blower motor
- 2-stage fan control
- AHRI/ETL
- Mobile Home Certification.

SPECIFICATIONS

Indoor unit			LCM5-24-15	LCM5-36-15	LCM5-60-15	LCM5-61-15
Power supply	Rated Voltage	V-Ph-Hz	208/230V,1Ph,60Hz	208/230V,1Ph,60Hz	208/230V,1Ph,60Hz	208/230V,1Ph,60Hz
	Min./Max.Voltage	V	187/253	187/253	187/253	187/253
Cooling	Cooling Capacity	Btu/w	24000	34200	54500	55000
	EER2	Btu/w	12	12	11.7	11.2
	SEER2	Btu/w	15.2	15.2	14.3	15.2
Min. Circuit Amps	Type	A	3.3	3.8	5.7	5.7
Max. over current protection		A	15	15	15	15
Indoor fan motor			ECM	ECM	ECM	ECM
	Horsepower (HP)		1/3	1/2	3/4	3/4
	Full Load Amps (FLA)	A	2.6	3.0	4.5	4.5
	Rated RPM		1050	1050	1050	1050
Fan Blower	Material		Metal	Metal	Metal	Metal
	Type		Centrifugal	Centrifugal	Centrifugal	Centrifugal
	Diameter	inch	10-5/8	13	13	13
	Height	inch	8-1/8	10-5/8	10-5/8	10-5/8
Indoor coil	Type		Tube & Fin	Tube & Fin	Tube & Fin	Tube & Fin
	Tube Material		Aluminum	Aluminum	Aluminum	Aluminum
	Tube Size	inch	9/32	9/32	9/32	9/32
Indoor air flow (Hi/Mi/Lo)		CFM	441/553/776	665/788/994	1135/1365/1506	1171/1376/1506
Indoor noise level (Hi/Mi/Lo)		dB(A)	49	51	55	56
Indoor unit	Dimension(W*D*H)	inch	18-1/8x20-1/2x41-3/8	19-5/8x21-5/8x46-1/2	22x24x54-1/2	22x24x54-1/2
	Packing (W*D*H)	inch	20-3/4x24-3/16x42	20-3/4x25-3/8x47-1/8	24-11/16x27-11/16x55-3/16	24-11/16x27-11/16x55-3/16
	Net/Gross weight	lbs	101	125	159	161
Refrigerant piping	Liquid side	inch	3/8	3/8	3/8	3/8
	Gas side	inch	3/4	3/4	3/4	7/8
Thermostat type			Remote Control	Remote Control	Remote Control	Remote Control
Operating temperature range	Cooling	°F	55-115	55-115	55-115	55-115
	Heating	°F	/	/	/	/

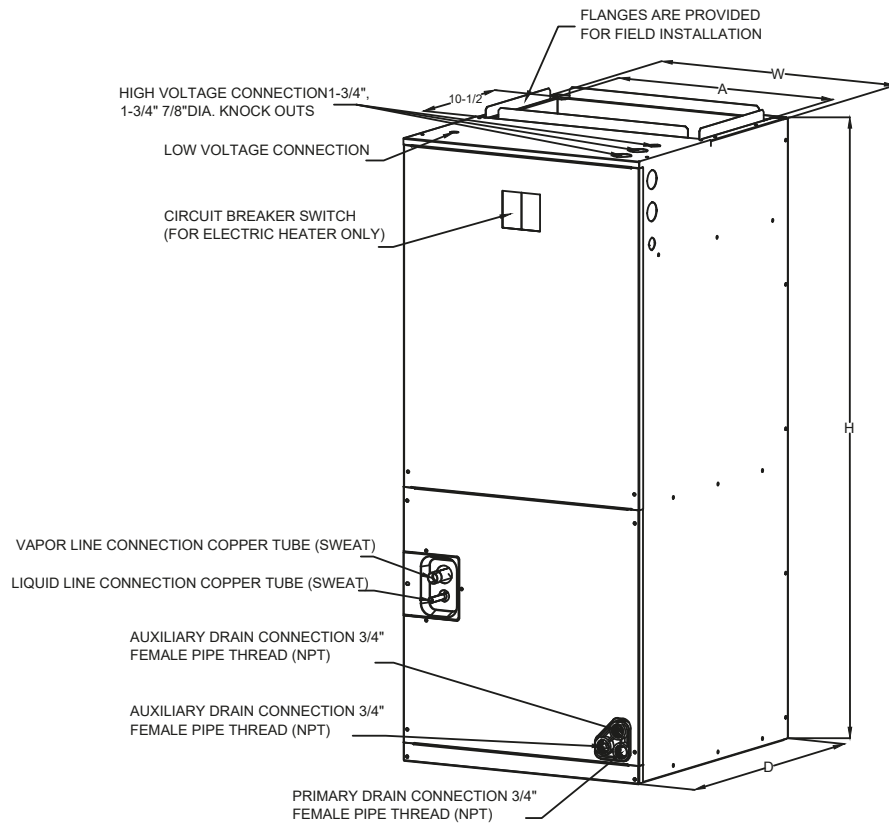


LCM5 Series

Multi-Position Air Handlers
2 Tons up to 5 Tons

UP TO
15.2 SEER2

SPECIFICATIONS



UNIT DIMENSION AND WEIGHTS



	LCM5-24-15	LCM5-36-15	LCM5-60-15	LCM5-61-15
Width(in.)	41-3/8	46-1/2	54-1/2	54-1/2
Depth(in.)	18-1/8	19-5/8	22	22
Depth(in.)	20-1/2	21-5/8	24	24
Weight(lbs.)	101	125	159	161

Heating Kit (Optional)

TXV Valve

PART No.	DESCRIPTION
TR6-3T	TXV-FOR 18K - 24K
TR6-4T	TXV-FOR 36K - 42K

PART No.	DESCRIPTION
TR6-5T	TXV-FOR 48K
TR6-6T	TXV-FOR 60K

PART No.	DESCRIPTION
CHE2-05	5kw
CHE2-05B	5kw with breaker
CHE2-08	8kw
CHE2-08B	8kw with breaker
CHE2-10	10kw
CHE2-10B	10kw with breaker
CHE2-15B	15kw with breaker
CHE2-20B	20kw with breaker



CWM5 Series

WALL MOUNTED ECM AIR HANDLERS

2 Tons up to 3 Tons

UP TO
15.2 SEER2

24,000 Thru
36,000 btu



CWM5 Series

Wall Mounted Air Handlers
2 Tons up to 3 Tons

UP TO
15.2 SEER2

FEATURES:

- Direct drive multi speed motor
- ECM motor
- Thermoplastic drain pan with bottom primary and secondary drain connections.
- Built-in filter rack.
- Wall-hanging bracket provided.
- Front or bottom return available.
- Optional heating elements of 5kW, 8kW, and 10kW.
- All aluminum coil.



SPECIFICATIONS

Indoor unit			CWM5-24-15	CWM5-30-15	CWM5-36-15
Power supply	Rated Voltage	V-Ph-Hz	208/230V,1Ph,60Hz	208/230V,1Ph,60Hz	208/230V,1Ph,60Hz
	Min. / Max. Voltage	V	187/253	187/253	187/253
Cooling	Cooling Capacity	Btu/w	23200	28800	35600
	EER2	Btu/w	11.7	12.00	11.7
	SEER2	Btu/w	14.3	15.2	14.3
Min. Circuit Amps		A	2.4	3.4	3.4
Max. over current protection		A	15	15	15
Indoor fan motor	Type		ECM	ECM	ECM
	Horsepower (HP)		1/3	1/2	1/2
	Full Load Amps (FLA)	A	1.9	2.6	2.6
	Rated RPM		1050	1050	1050
Fan Blower	Material		Metal	Metal	Metal
	Type		Centrifugal	Centrifugal	Centrifugal
	Diameter	inch	10-3/4	10-3/4	10-3/4
	Height	inch	6	8	8
Indoor coil	Type		Tube & Fin	Tube & Fin	Tube & Fin
	Tube Material		Aluminum	Aluminum	Aluminum
	Tube Size	inch	9/32	9/32	9/32
Indoor air flow (Hi/Mi/Lo)		CFM	665/812/835	729/941/1100	941/1100/1153
Indoor noise level (Hi/Mi/Lo)		dB(A)	54	54	54
Indoor unit	Dimension(W*D*H)	inch	20-1/2x15x36-1/2	22x19x39-1/2	22x19x39-1/2
	Packing (W*D*H)	inch	22-13/16x17-5/16x41-3/4	24-3/16x21-1/4x44-7/8	24-3/16x21-1/4x44-7/8
	Net/Gross weight	lbs	79/95	97/119	97/119
Refrigerant piping	Liquid side	inch	3/8	3/8	3/8
	Gas side	inch	3/4	3/4	3/4
Thermostat type			Remote Control	Remote Control	Remote Control
Operating temperature range	Cooling	°F	55-115	55-115	55-115
	Heating	°F	/	/	/



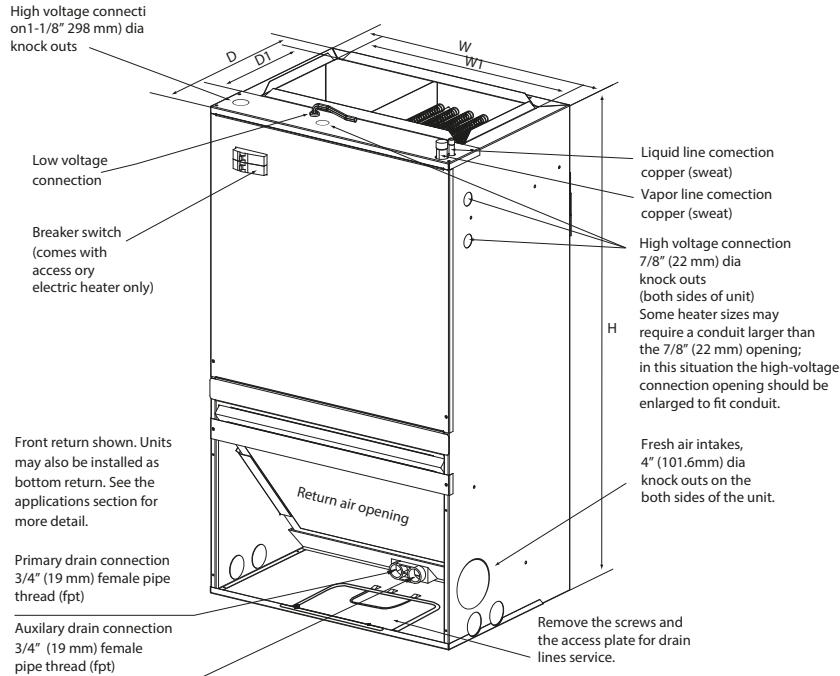
CWM5 Series

Wall Mounted Air Handlers
2 Tons up to 3 Tons

UP TO
15.2 SEER2



SPECIFICATIONS



UNIT DIMENSION AND WEIGHTS

Model	Dimensions [IN.]					Unit Weight/Shipping Weight Lbs.
	Unit Height "H" IN.	Unit Width "W" IN.	Unit Width "W1" IN.	Unit Depth "D" IN.	Unit Depth "D1" IN.	
Width(in.)	36-1/2	20-1/2	17-2/5	15	9-1/2	79/95
Depth(in.)	39-1/2	22	18-4/5	19	9-1/2	97/119



CWM5-R Series

WALL MOUNTED PSC AIR HANDLERS

1.5 Tons up to 3 Tons

18,000 Thru
36,000 btu

14.3 SEER2



CWM5-R Series

Wall Mounted Air Handlers
1.5 Tons up to 3 Tons

14.3 SEER2



FEATURES:

- Direct drive multi speed motors allow air volume variation for heating / cooling
- Multi speed PSC motor
- Thermoplastic drain pan with bottom primary and secondary drain connections.
- Built-in filter rack.
- Wall-hanging bracket provided.
- Front or bottom return available.
- Optional heating elements of 5kW, 8kW, and 10kW.
- All aluminum coil.

SPECIFICATIONS

OUTDOOR UNIT		CWM5-18-15R	CWM5-24-15R	CWM5-30-15R	CWM5-36-15R
Nominal Capacity	Cooling (BTU/h)	18,000	24,000	30,000	36,000
	Pressure (in.w.c)	0.7	0.6	0.6	0.6
Electrical Data	Voltage / Phase (60 Hz)	208/230 / 1	208/230 / 1	208/230 / 1	208/230 / 1
	Min. / Max. Voltage	187/253	187/253	187/253	187/253
	Min. Circuit Amps	1	1.3	1.6	2.3
	Max. Overcurrent	15	15	15	15
Fan Motor	Motor Type	PSC	PSC	PSC	PSC
	Capacitor (uF)	6	6	15	10
	Horsepower (HP)	1/6	1/4	1/3	1/2
	Rated RPM	1075	1075	1075	1075
Fan Blower	Material	Metal	Metal	Metal	Metal
	Type	Centrifugal	Centrifugal	Centrifugal	Centrifugal
	Diameter (in)	10-3/4	10-3/4	10-3/4	10-3/4
	Height (in)	6	6	8	8
Evaporator Coil	Type	Tube & Fin	Tube & Fin	Tube & Fin	Tube & Fin
	Tube Material	Aluminum	Aluminum	Aluminum	Aluminum
	Tube Size (in)	9/32	9/32	9/32	9/32
Unit Dimensions (inch)	Height	36-1/2	36-1/2	39-1/2	39-1/2
	Width	20-1/2	20-1/2	22	22
	Depth	15	15	19	19
Sound Power (dB)		50	54	54	54
Refrigerant Connection Size	Liquid Line Size (O.D.)	3/8	3/8	3/8	3/8
	Suction Line Size (O.D.)	3/4	3/4	3/4	3/4





CHX(CD) Series

CEILING-MOUNTED CONCEALED FAN COIL UNITS

1.5 Tons up to 3 Tons

18,000 Thru
36,000 btu



CHX(CD) Series

Concealed Fan Coil Units 18,000 Thru 36,000 btu



FEATURES:

- Cabinet - Our cabinets are built for durability and corrosion resistance, ensuring reliability. They not only prevent energy loss but also effectively eliminate condensation.
- All-Aluminum coil provides excellent heat transfer and efficiency.
- It is more durable in contrast to traditional copper coils, it is more resilient and has a lower likelihood of refrigerant leakage into the atmosphere.
- The integrated drain pan, crafted from rust-resistant material, features a unique design with a gentle slope to effectively eliminate standing water.
- The Variable Speed Blower motor enables gradual start up and shutdown, leading to reduced energy consumption. This results in improved air quality and a consistently comfortable temperature. Additionally, it possesses the ability to minimize sound for a quiet operation while saving energy.
- Blower compartment
- Exquisite design-Super slim appearance and compact structure will save installation space.



SPECIFICATIONS

OUTDOOR UNIT		CHX18CD	CHX24CD	CHX30CD	CHX36CD
Nominal Capacity	Cooling (BTU/h)	18,000	24,000	30,000	36,000
	Pressure(in.w.g)(Pa)	45	45	60	60
Electrical Data	Voltage / Phase(60Hz)	208/230/1	208/230/1	208/230/1	208/230/1
	Min. / Max. Voltage	187/253	187/253	187/253	187/253
	Min. Circuit Amps	3.3	3.3	3.3	3.3
	Max. Overcurrent Protection	15	15	15	15
Fan Motor	Motor Type	ECM	ECM	ECM	ECM
	Capacitor (uF)	/	/	/	/
	Horsepower (HP)	1/3	1/3	1/3	1/3
	Rated RPM	1050	1050	1050	1050
	Full Load Amps (FLA)	2.6	2.6	2.6	2.6
Fan Blower	Material	Metal	Metal	Metal	Metal
	Type	Centrifugal	Centrifugal	Centrifugal	Centrifugal
	Diameter(in.)	7	7	7	7
	Height(in.)	8	8	9	9
Evaporator Coil	Type/Tube	Tube & Fin	Tube & Fin	Tube & Fin	Tube & Fin
	Material	Aluminum	Aluminum	Aluminum	Aluminum
	Tube Size(in.)	9/32	9/32	9/32	9/32
Sound Power	(dB)	57	57	54	54
Refrigerant Connection	Liquid Line Size (O.D.)	3/8	3/8	3/8	3/8
	Suction Line Size (O.D.)	3/4	3/4	3/4	3/4

Heaters are optional:

PART No.	DESCRIPTION
CHF05B	5KW HEATER WITH BREAKER
CHF08B	8KW HEATER WITH BREAKER
CHF10B	10KW HEATER WITH BREAKER



MATCH UP TABLE

BAR5 Series
Cooling Units

UP TO
15.2 SEER2



CWM5 ECM Series

Outdoor Unit	Indoor Unit	Cooling Capacity	EER2	SEER2
BAR5-18-15	CWM5-24-15	18000	11.7	14.3
BAR5-24-15	CWM5-24-15	23200	11.7	14.3
BAR5-24-15	CWM5-30-15	24000	12	15.2
BAR5-30-15	CWM5-24-15	27200	11.7	14.3
BAR5-30-15	CWM5-30-15	28800	12	15.2
BAR5-30-15	CWM5-36-15	28800	12	15.2
BAR5-36-15	CWM5-30-15	35600	11.7	14.3
BAR5-36-15	CWM5-36-15	35600	11.7	14.3



CWM5-R PSC Series

Outdoor Unit	Indoor Unit	Cooling Capacity	EER2	SEER2
BAR5-24-15	CWM5-24-15R	23200	11.7	14.3
BAR5-24-15	CWM5-30-15R	24000	11.7	14.3
BAR5-30-15	CWM5-36-15R	28400	11.7	14.3
BAR5-36-15	CWM5-36-15R	35000	11.7	14.3
BAR5-36-15	CWM5-30-15R	35000	11.7	14.3



LUC5 Series

Outdoor Unit	Indoor Unit	Cooling Capacity	EER2	SEER2
BAR5-18-15	LUC5-18-15+TXV	18000	11.7	14.3
BAR5-18-15	LUC5-24-15+TXV	18000	11.7	14.3
BAR5-24-15	LUC5-18-15+TXV	23200	11.7	14.3
BAR5-24-15	LUC5-24-15	23600	11.7	14.3
BAR5-24-15	LUC5-36-15+TXV	23800	11.7	14.3
BAR5-30-15	LUC5-24-15	28400	11.7	14.3
BAR5-30-15	LUC5-36-15	28600	11.7	14.3
BAR5-30-15	LUC5-48-15	28800	11.7	14.3
BAR5-36-15	LUC5-24-15	34000	11.7	14.3
BAR5-36-15	LUC5-36-15	34000	11.7	14.3
BAR5-36-15	LUC5-48-15	34800	11.7	14.3
BAR5-42-15	LUC5-48-15+TXV	41500	11.7	14.3
BAR5-48-15	LUC5-60-15	45000	11.2	13.8
BAR5-48-15	LUC5-48-15+TXV	44500	11.7	14.3
BAR5-60-15	LUC5-60-15+TXV	54000	11.2	13.8



MATCH UP TABLE

BAR5 Series
Cooling Units

UP TO
15.2 SEER2



LCM5 Series

Outdoor Unit	Indoor Unit	Cooling Capacity	EER2	SEER2
BAR5-18-15	LCM5-36-15	18000	11.7	14.3
BAR5-18-15	LCM5-24-15+TXV	18000	12	15.2
BAR5-24-15	LCM5-24-15+TXV	24000	12	15.2
BAR5-24-15	LCM5-36-15	24000	12	15.2
BAR5-30-15	LCM5-24-15	28000	11.7	14.3
BAR5-30-15	LCM5-36-15	28800	12	15.2
BAR5-36-15	LCM5-36-15+TXV	34200	12	15.2
BAR5-42-15	LCM5-36-15	40000	11.7	14.3
BAR5-42-15	LCM5-60-15	41500	12	15.2
BAR5-48-15	LCM5-60-15	45000	12	15.2
BAR5-60-15	LCM5-60-15	54500	11.7	14.3
BAR5-61-15	LCM5-61-15	55000	11.2	15.2



CHX(CD) Series

Outdoor Unit	Indoor Unit	Cooling Capacity	EER2	SEER2
BAR5-18-15	CHX18CD	18000	11.7	14.3
BAR5-24-15	CHX24CD	23000	11.7	14.3
BAR5-30-15	CHX30CD	27200	11.7	14.3
BAR5-36-15	CHX36CD	33000	11.7	14.3
BAR5-24-15	CHX30CD	23000	11.7	14.3
BAR5-18-15	CHX30CD	18000	11.7	14.3



MATCH UP TABLE

BAH5 Series
Heat Pump

UP TO
15.2 SEER2



CWM5 Series

Outdoor Unit	Indoor Unit	Cooling Capacity	EER2	SEER2	Heating Capacity	HSPF2
BAH5-18-15	CWM5-24-15	18000	11.7	14.3	18000	7.5
BAH5-24-15	CWM5-24-15	23000	11.7	14.3	23000	7.5
BAH5-24-15	CWM5-30-15	24000	12.0	15.2	24000	7.8
BAH5-30-15	CWM5-30-15	27200	11.7	14.3	27400	7.5
BAH5-30-15	CWM5-36-15	27200	11.7	14.3	27400	7.5
BAH5-36-15	CWM5-36-15	34200	11.7	14.3	34200	7.5
BAH5-36-15	CWM5-30-15	34200	11.7	14.3	34200	7.5



CWM5-R Series

Outdoor Unit	Indoor Unit	Cooling Capacity	EER2	SEER2	Heating Capacity	HSPF2
BAH5-24-15	CWM5-30-15R	23800	11.7	14.3	23800	7.5
BAH5-30-15	CWM5-30-15R	27200	11.7	14.3	27200	7.5
BAH5-36-15	CWM5-36-15R	34200	11.7	14.3	34200	7.5
BAH5-36-15	CWM5-30-15R	34200	11.7	14.3	34200	7.5



LUC5 Series

Outdoor Unit	Indoor Unit	Cooling Capacity	EER2	SEER2	Heating Capacity	HSPF2
BAH5-18-15	LUC5-18-15+TXV	18000	11.7	14.3	18000	7.5
BAH5-24-15	LUC5-24-15	23000	11.7	14.3	22800	7.5
BAH5-24-15	LUC5-36-15+TXV	23000	11.7	14.3	22800	7.5
BAH5-30-15	LUC5-36-15+TXV	28000	11.7	14.3	28000	7.5
BAH5-30-15	LUC5-24-15+TXV	27600	11.7	14.3	27600	7.5
BAH5-36-15	LUC5-36-15+TXV	34200	11.7	14.3	34200	7.5
BAH5-36-15	LUC5-48-15+TXV	34600	11.7	14.3	34600	7.5
BAH5-42-15	LUC5-48-15+TXV	42000	11.7	14.3	41000	7.5
BAH5-48-15	LUC5-48-15+TXV	45000	11.7	14.3	45000	7.5



MATCH UP TABLE

BAH5 Series
Heat Pump

UP TO
15.2 SEER2



LCM5 Series

Outdoor Unit	Indoor Unit	Cooling Capacity	EER2	SEER2	Heating Capacity	HSPF2
BAH5-18-15	LCM5-24-15+TXV	18000	12.0	15.2	17200	7.5
BAH5-24-15	LCM5-24-15+TXV	23200	11.7	14.3	22800	7.5
BAH5-24-15	LCM5-36-15+TXV	23400	12.0	15.2	22800	7.8
BAH5-30-15	LCM5-24-15+TXV	27400	11.7	14.3	27400	7.5
BAH5-30-15	LCM5-36-15+TXV	28200	12.0	15.2	27600	7.8
BAH5-36-15	LCM5-36-15+TXV	34200	12.0	15.2	34200	7.8
BAH5-42-15	LCM5-36-15+TXV	40000	11.7	14.3	40000	7.5
BAH5-42-15	LCM5-60-15+TXV	41500	12.0	15.2	41000	7.8
BAH5-48-15	LCM5-60-15+TXV	45000	12.0	15.2	45000	7.8
BAH5-60-15	LCM5-60-15+TXV	54500	11.7	14.3	55000	7.5
BAH5-61-15	LCM5-61-15	54000	10.5	15.2	58000	7.5



CHX(CD) Series

Outdoor Unit	Indoor Unit	Cooling Capacity	EER2	SEER2	Heating Capacity
BAH5-24-15	CHX24CD	23000	11.7	14.3	23000
BAH5-30-15	CHX30CD	27000	11.7	14.3	27000
BAH5-36-15	CHX36CD	32800	11.7	14.3	32800



CPH Series

**HEAT PUMP
HORIZONTAL DISCHARGE
PACKAGE UNITS**
2 Tons up to 5 Tons

24,000 Thru
60,000 btu

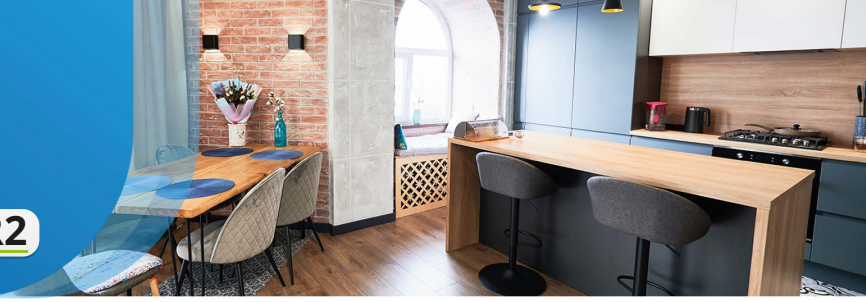
13.4 SEER2



CPH Series

Heat Pump Package Units
2 Tons up to 5 Tons

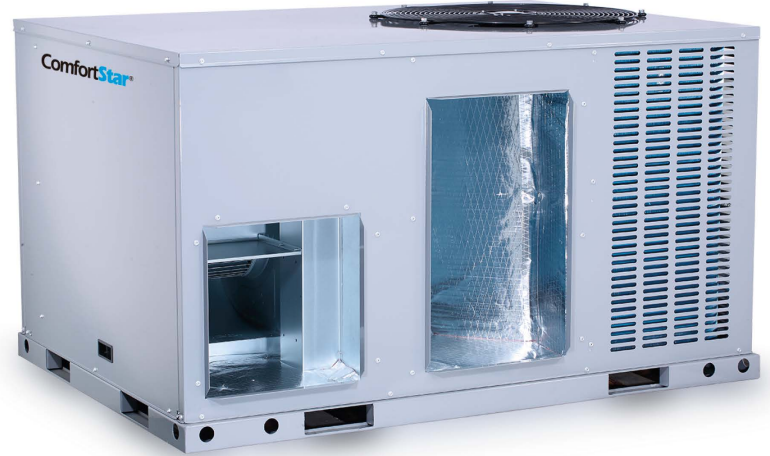
13.4 SEER2



Horizontal Discharge

FEATURES:

- Powder-painted galvanized steel cabinet.
- Electric heat kit available as a field-installed option:5/8/10/15/20kW.
- High efficiency compressor that operates smoothly, quietly and consistently.
- Internal safeguards that protect the compressor against high and low pressures, coil temperatures and power surge.
- Copper tube/aluminum fin coil.
- High efficiency ECM blower motor (not all models)
- AHRI/ETL



SPECIFICATIONS

Model			CPH-24-15	CPH-30-15	CPH-36-15
Power supply		V-Ph-Hz	208/230-1-60Hz	208/230-1-60Hz	208/230-1-60Hz
Cooling	Capacity	Btu/h	22,800	28,200	34,200
	SEER2	Btu/h.W	13.4	13.4	13.4
Heating	Capacity	Btu/h	22,400	28,200	34,200
	HSPF	Btu/h.W	6.7	6.7	6.7
MCA		A	15.0	18.0	22.6
MOP		A	20	25	35
Compressor	Type		Rotary	Rotary	Scroll
	Capacitor		Single	Single	Single
	Rated current(RLA)	A	9.2	10.2	13.0
	Locked rotor(LRA)	A	43.0	58.0	75.0
Indoor fan motor	Type		PSC	ECM	ECM
	Output	HP	1/4	1/2	2/1/2023
	Capacitor	uF	12	/	/
	RPM	r/min	1,050	1050	1,050
Outdoor coil	Type		Tube & Fin	Tube & Fin	Tube & Fin
	Tube Size (O.D.)	inch	9/32	9/32	3/16
Outdoor fan motor	Type		ECM	ECM	ECM
	Output	HP	1/4	1/4	1/4
	Capacitor	uF	/	/	/
	RPM	r/min	800	980	980
Sound Power		dB(A)	80.0	81.0	81.0
Outdoor unit	Dimension(WxHxD)	inch	52X24-13/16X37-3/4	52X24-13/16X37-3/4	52X24-13/16X37-3/4
	Packing(WxHxD)	inch	52-3/4X25-13/16X38	52-3/4X25-13/16X38	52-3/4X25-13/16X38
	Net/Gross weight	lbs	324/331	325/332	342/349



CPH Series

Heat Pump Package Units
2 Tons up to 5 Tons

13.4 SEER2



Horizontal Discharge



SPECIFICATIONS

Model			CPH-42-15	CPH-48-15	CPH-60-15
Power supply		V-Ph-Hz	208/230-1-60Hz	208/230-1-60Hz	208/230-1-60Hz
Cooling	Capacity	Btu/h	40,500	46,500	57,000
	SEER2	Btu/h.W	13.4	13.4	13.4
Heating	Capacity	Btu/h	40,500	47,000	57,000
	HSPF	Btu/h.W	6.7	6.7	6.7
MCA		A	24.2	26.8	34.9
MOP		A	35	40	55
Compressor	Type		Scroll	Scroll	Scroll
	Capacitor		Single	Single	Single
	Rated current(RLA)	A	15.2	17.3	21.5
	Locked rotor(LRA)	A	112.3	108.0	127.9
Indoor fan motor	Type		PSC	PSC	ECM
	Output	HP	3/4	3/4	3/4
	Capacitor	uF	/	4	/
	RPM	r/min	1,050	1,050	1,050
Outdoor coil	Type		Tube & Fin	Tube & Fin	Tube & Fin
	Tube Size (O.D.)	inch	3/16	3/16	9/32
Outdoor fan motor	Type		ECM	ECM	ECM
	Output	HP	1/4	1/4	1/4
	Capacitor	uF	/	/	/
	RPM	r/min	980	980	980
Sound Power		dB(A)	80.0	80.0	80.0
Outdoor unit	Dimension(WxHxD)	inch	58-1/2X33-1/16X42-1/16	58-1/2X33-1/16X42-1/16	58-1/2X33-1/16X42-1/16
	Packing(WxHxD)	inch	59-1/4X34-1/16X42-1/4	59-1/4X34-1/16X42-1/4	59-1/4X34-1/16X42-1/4
	Net/Gross weight	lbs	448/457	442/451	457/466



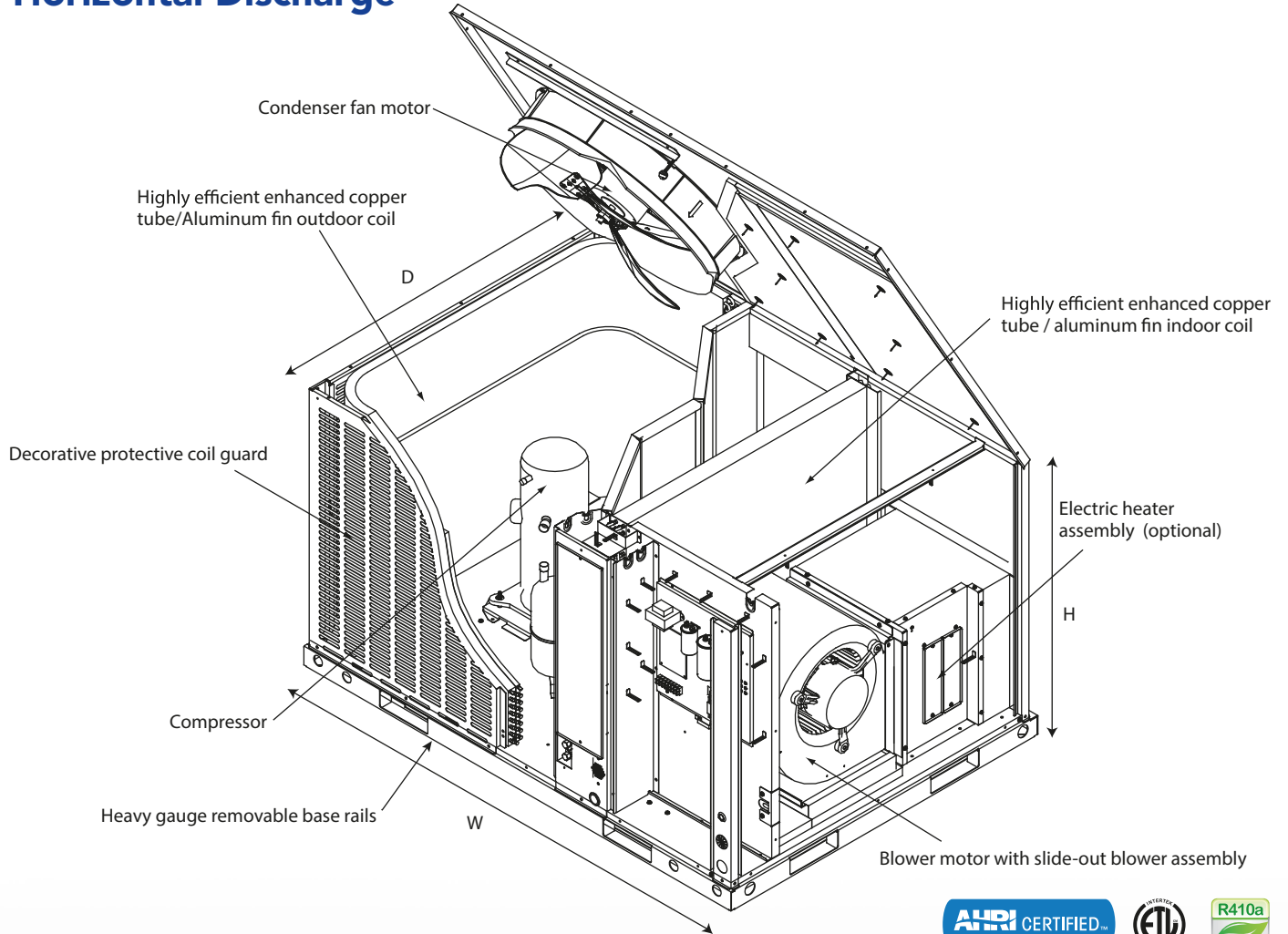
CPH Series

Heat Pump Package Units
2 Tons up to 5 Tons

13.4 SEER2



Horizontal Discharge



UNIT DIMENSION AND WEIGHTS

Unit Dimension	24K	30K	36K	42K	48K	60K
Width(in.)	52	52	52	58 1/2	58 1/2	58 1/2
Depth(in.)	37 3/4	37 3/4	37 3/4	42-1/16	42-1/16	42-1/16
Height(in.)	24-13/16	24-13/16	24-13/16	33 1/16	33 1/16	33 1/16

Heating Kit (Optional)

PART No.
EHK-086
EHK-08G
EHK-106
EHK-10G
EHK-156
EHK-15G

CDP Series

HEAT PUMP PACKAGE UNIT HORIZONTAL AND DOWNFLOW DISCHARGE

24,000 Thru
60,000 btu

13.4 SEER2



CDP Series

Heat Pump Package Units
2 Tons up to 5 Tons

13.4 SEER2



Horizontal and Downflow Discharge

FEATURES:

- High quality heat exchanger.
- Fits universal curb, convenient installation and replacement.
- Horizontal or downflow application.
- Convenient access panels, one side service.
- Rotatable control box, slide out design for blower motor (Easy for service).
- AHRI/ETL



SPECIFICATIONS

Model		CDP24-15	CDP36-15	CDP48-15
Power Supply	Volt-Ph-Hertz	208/230-1-60	208/230-1-60	208/230-1-60
Cooling	Cooling (BTU/h)	22,800	34,000	46,500
	EER2(BTU/h.w)	11	11	11
	SEER2	13.4	13.4	13.4
Heating	Heating (BTU/h)	22,800	34,200	48,000
	HSPF2	6.7	6.7	6.7
Compressor	Volts	208/230	208/230	208/230
	RLA	10.0	16.0	23.0
	LRA	34.8	72.0	108.0
	Type	Rotary	Rotary	Scroll
Condenser Fan Motor	Number Of Motors	1	1	1
	RPM	880	830	1,050
	Horsepower	1/12	1/6	1/3
	FLA	0.61	1.0	1.9
Evaporator Fan Motor	Number Of Motors	1	1	1
	No. Speeds	1	1	1
	Horsepower	1/5	1/2	1/2
	Nominal CFM	660	855	890
Refrigeration	Refrigerant Type	R410A	R410A	R410A
	Refrigerant Charge (lb-oz.)	6-6	7-15	9-4
Electrical Data	Minimum Circuit Ampacity	15.1	24.2	35.2
	Max. Overcurrent Protection	25	40	50
	Min / Max Volts	187/253	187/253	187/253
Dimensions and Weight	Equipment Weight (lbs)	400	411	537
	Shipping Weight (lbs)	418	429	576
	L x W x H	50-11/16 x 35-1/16 x 46-13/16	50-11/16 x 35-1/16 x 46-13/16	50-9/16x46-13/16x51-7/16



CDP Series

Heat Pump Package Units
2 Tons up to 5 Tons

13.4 SEER2



Horizontal and Downflow Discharge



SPECIFICATIONS

Model		CDP60-15	CDP60-15-T
Power Supply	Volt-Ph-Hertz	208/230-1-60	208/230-3-60
Cooling	Cooling (BTU/h)	57,000	57,000
	EER2(BTU/h.w)	11	11.8
	SEER2	13.4	14.0
Heating	Heating (BTU/h)	57,000	57,000
	HSPF2	6.7	8.0
Compressor	Volts	208/230	208/230
	RLA	26.0	22.0
	LRA	127.9	136.8
	Type	Scroll	Scroll
Condenser Fan Motor	Number Of Motors	1	1
	RPM	1,050	1,050
	Horsepower	1/3	1/3
	FLA	1.9	2.0
Evaporator Fan Motor	Number Of Motors	1	1
	No. Speeds	1	1
	Horsepower	3/4	3/4
	Nominal CFM	990	1,025
Refrigeration	Refrigerant Type	R410A	R410A
	Refrigerant Charge (lb-oz.)	11-14	6-10
Electrical Data	Minimum Circuit Ampacity	38.4	35.2
	Max. Overcurrent Protection	50	50
	Min / Max Volts	187/253	187/253
Dimensions and Weight	Equipment Weight (lbs)	568	557
	Shipping Weight (lbs)	607	596
	L x W x H	50-9/16x46-13/16x51-7/16	50-9/16x46-13/16x51-7/16



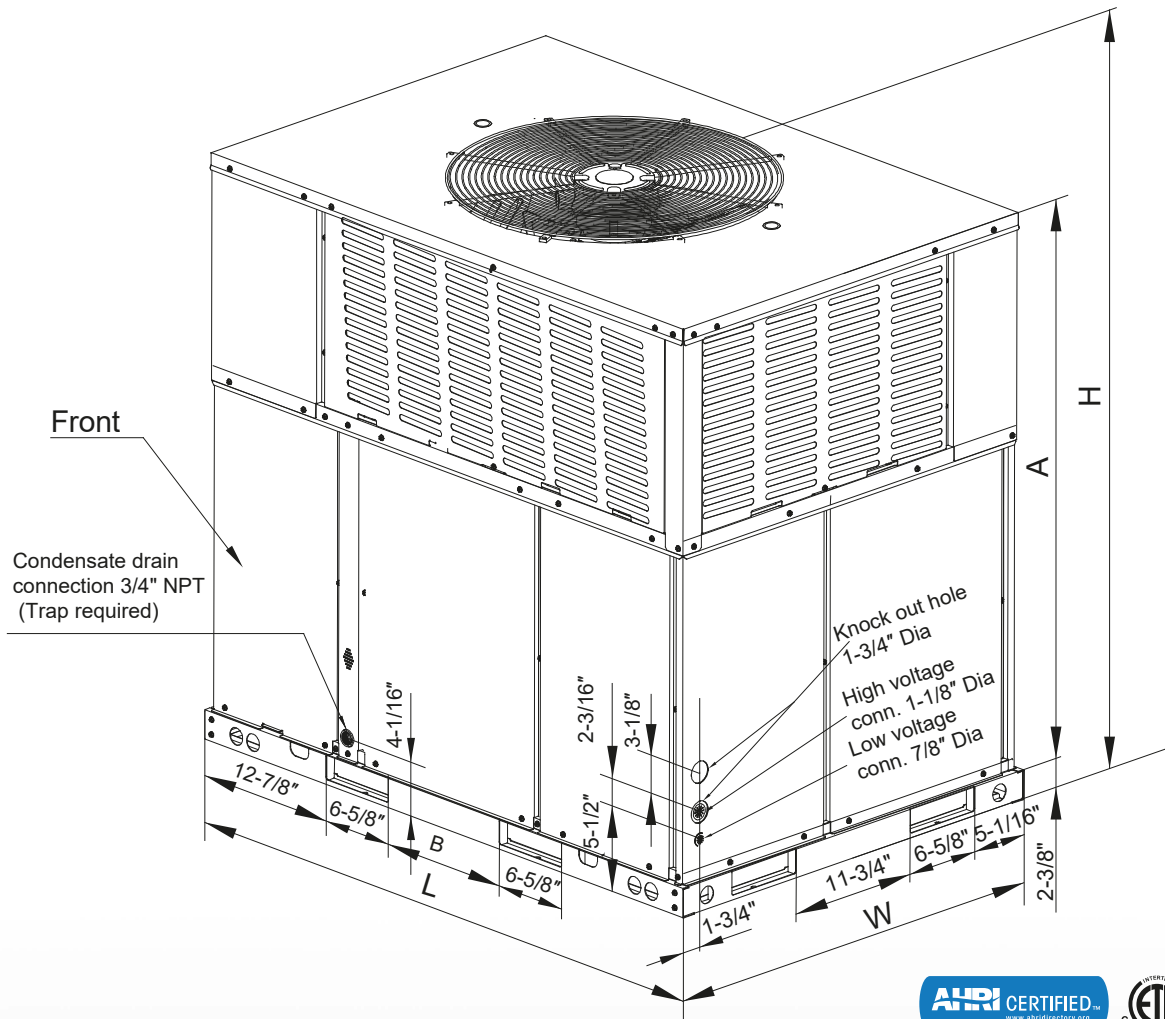
CDP Series

Heat Pump Package Units
2 Tons up to 5 Tons

13.4 SEER2



Horizontal and Downflow Discharge



UNIT DIMENSION AND WEIGHTS

Heating Kit (Optional)

Model size	Dimensions				
	"L" in.	"W" in.	"H" in.	"A" in.	"B" in.
Heat Pump					
24/36	50-11/16	35-1/16	46-13/16	44-1/16	11-3/4
48/60	51-9/16	44-13/16	51-7/16	47-5/16	19-11/16

PART No.
CHE5-05B
CHE5-08B
CHE5-10B
CHE5-15B
CHE5-20B

ComfortStar®

Air Conditioning & Heating Products

RESIDENTIAL LINE PRODUCT

1.5 Tons up to 5 Tons
14.3 and 15.2 SEER2

SEER2



Comfort, it's in our name

E-mail: info@comfortstarusa.com | www.comfortstarusa.com

12201 N. W. 107TH AVENUE, MEDLEY, FL 33178

TOLL FREE: 1-866-524-9898 | PHONE: 305-500-9898 | FAX: 305-500-9896

All rights reserved. Printed in the United States of America. This publication is protected by Copyright and permission must be obtained by eAir, LLC prior to any reproduction or transmission in any form or by any means, electronic, mechanical, photocopying, recording or likewise. Warranty registration is not required in California.

RLP | 2024