

CPH Series

**HEAT PUMP
HORIZONTAL DISCHARGE
PACKAGE UNITS**
2 Tons up to 5 Tons

24,000 Thru
60,000 btu

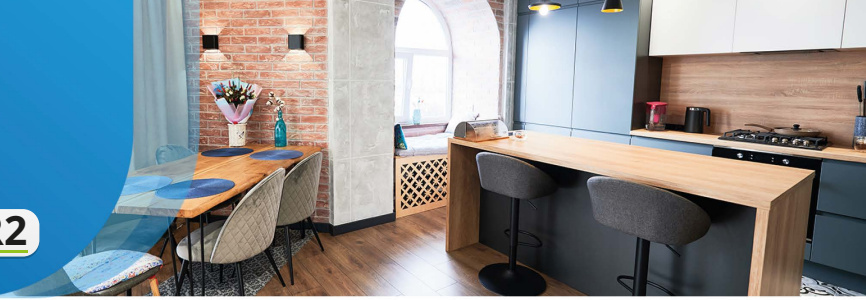
13.4 SEER2



CPH Series

Heat Pump Package Units
2 Tons up to 5 Tons

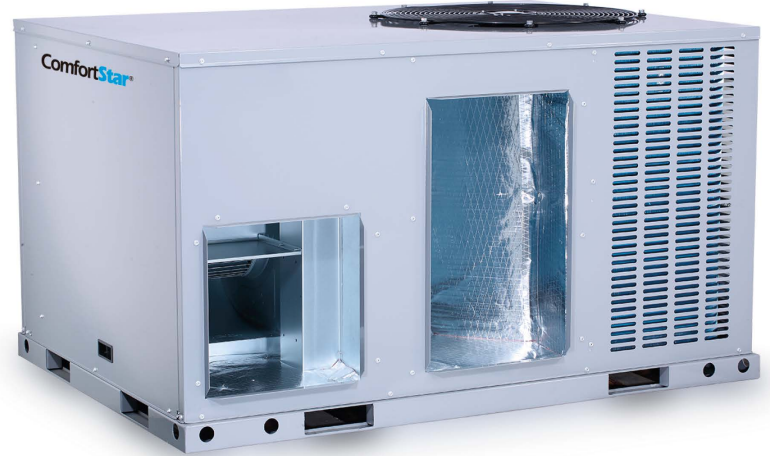
13.4 SEER2



Horizontal Discharge

FEATURES:

- Powder-painted galvanized steel cabinet.
- Electric heat kit available as a field-installed option:5/8/10/15/20kW.
- High efficiency compressor that operates smoothly, quietly and consistently.
- Internal safeguards that protect the compressor against high and low pressures, coil temperatures and power surge.
- Copper tube/aluminum fin coil.
- High efficiency ECM blower motor (not all models)
- AHRI/ETL



SPECIFICATIONS

Model			CPH-24-15	CPH-30-15	CPH-36-15
Power supply		V-Ph-Hz	208/230-1-60Hz	208/230-1-60Hz	208/230-1-60Hz
Cooling	Capacity	Btu/h	22,800	28,200	34,200
	SEER2	Btu/h.W	13.4	13.4	13.4
Heating	Capacity	Btu/h	22,400	28,200	34,200
	HSPF	Btu/h.W	6.7	6.7	6.7
MCA		A	15.0	18.0	22.6
MOP		A	20	25	35
Compressor	Type		Rotary	Rotary	Scroll
	Capacitor		Single	Single	Single
	Rated current(RLA)	A	9.2	10.2	13.0
	Locked rotor(LRA)	A	43.0	58.0	75.0
Indoor fan motor	Type		PSC	ECM	ECM
	Output	HP	1/4	1/2	2/1/2023
	Capacitor	uF	12	/	/
	RPM	r/min	1,050	1050	1,050
Outdoor coil	Type		Tube & Fin	Tube & Fin	Tube & Fin
	Tube Size (O.D.)	inch	9/32	9/32	3/16
Outdoor fan motor	Type		ECM	ECM	ECM
	Output	HP	1/4	1/4	1/4
	Capacitor	uF	/	/	/
	RPM	r/min	800	980	980
Sound Power		dB(A)	80.0	81.0	81.0
Outdoor unit	Dimension(WxHxD)	inch	52X24-13/16X37-3/4	52X24-13/16X37-3/4	52X24-13/16X37-3/4
	Packing(WxHxD)	inch	52-3/4X25-13/16X38	52-3/4X25-13/16X38	52-3/4X25-13/16X38
	Net/Gross weight	lbs	324/331	325/332	342/349



CPH Series

Heat Pump Package Units
2 Tons up to 5 Tons

13.4 SEER2



Horizontal Discharge



SPECIFICATIONS

Model			CPH-42-15	CPH-48-15	CPH-60-15
Power supply		V-Ph-Hz	208/230-1-60Hz	208/230-1-60Hz	208/230-1-60Hz
Cooling	Capacity	Btu/h	40,500	46,500	57,000
	SEER2	Btu/h.W	13.4	13.4	13.4
Heating	Capacity	Btu/h	40,500	47,000	57,000
	HSPF	Btu/h.W	6.7	6.7	6.7
MCA		A	24.2	26.8	34.9
MOP		A	35	40	55
Compressor	Type		Scroll	Scroll	Scroll
	Capacitor		Single	Single	Single
	Rated current(RLA)	A	15.2	17.3	21.5
	Locked rotor(LRA)	A	112.3	108.0	127.9
Indoor fan motor	Type		PSC	PSC	ECM
	Output	HP	3/4	3/4	3/4
	Capacitor	uF	/	4	/
	RPM	r/min	1,050	1,050	1,050
Outdoor coil	Type		Tube & Fin	Tube & Fin	Tube & Fin
	Tube Size (O.D.)	inch	3/16	3/16	9/32
Outdoor fan motor	Type		ECM	ECM	ECM
	Output	HP	1/4	1/4	1/4
	Capacitor	uF	/	/	/
	RPM	r/min	980	980	980
Sound Power		dB(A)	80.0	80.0	80.0
Outdoor unit	Dimension(WxHxD)	inch	58-1/2X33-1/16X42-1/16	58-1/2X33-1/16X42-1/16	58-1/2X33-1/16X42-1/16
	Packing(WxHxD)	inch	59-1/4X34-1/16X42-1/4	59-1/4X34-1/16X42-1/4	59-1/4X34-1/16X42-1/4
	Net/Gross weight	lbs	448/457	442/451	457/466



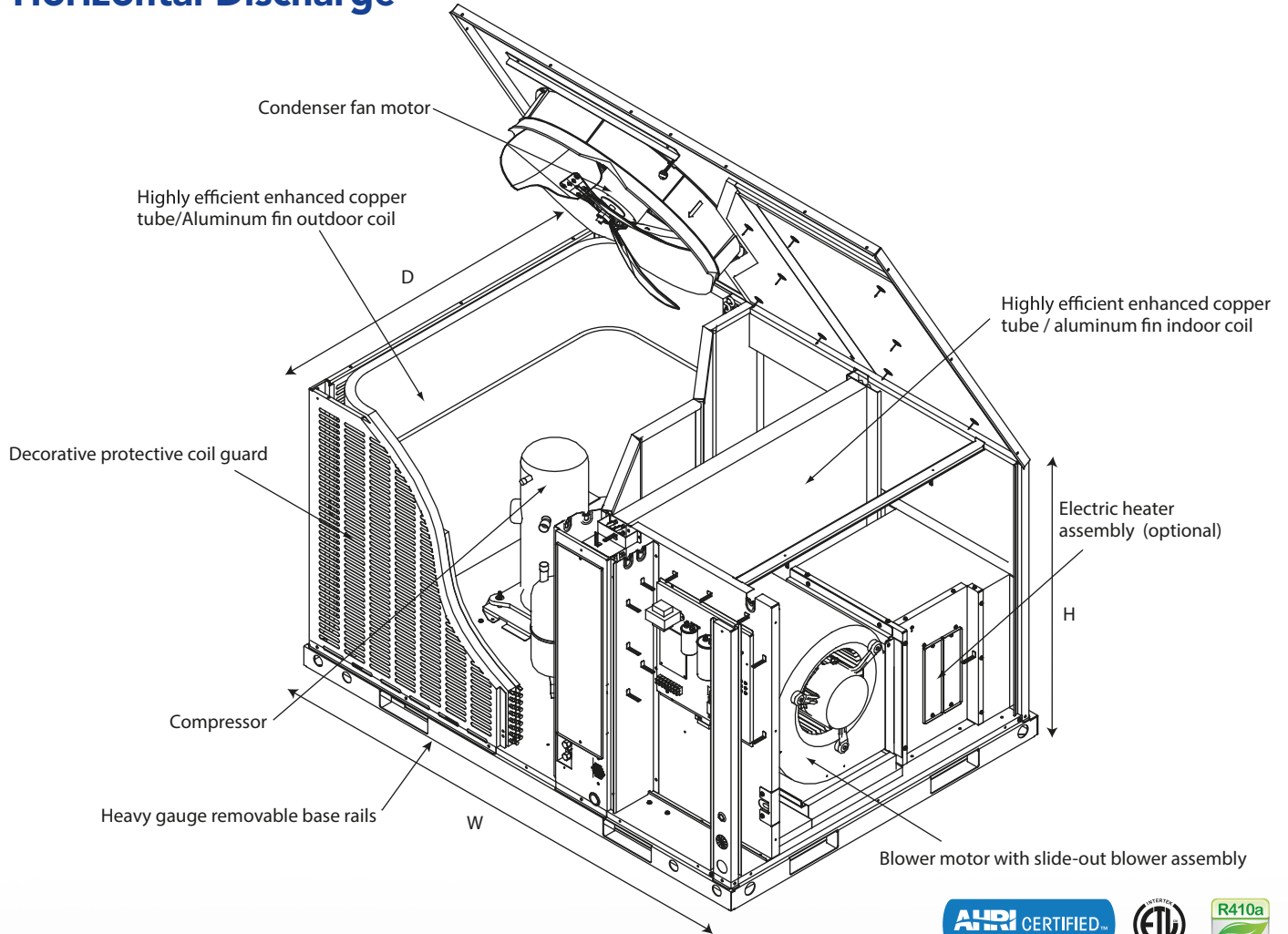
CPH Series

Heat Pump Package Units
2 Tons up to 5 Tons

13.4 SEER2



Horizontal Discharge



UNIT DIMENSION AND WEIGHTS

Unit Dimension	24K	30K	36K	42K	48K	60K
Width(in.)	52	52	52	58 1/2	58 1/2	58 1/2
Depth(in.)	37 3/4	37 3/4	37 3/4	42-1/16	42-1/16	42-1/16
Height(in.)	24-13/16	24-13/16	24-13/16	33 1/16	33 1/16	33 1/16

Heating Kit (Optional)

PART No.
EHK-086
EHK-08G
EHK-106
EHK-10G
EHK-156
EHK-15G

CDP Series

HEAT PUMP PACKAGE UNIT HORIZONTAL AND DOWNFLOW DISCHARGE

24,000 Thru
60,000 btu

13.4 SEER2



CDP Series

Heat Pump Package Units
2 Tons up to 5 Tons

13.4 SEER2



Horizontal and Downflow Discharge

FEATURES:

- High quality heat exchanger.
- Fits universal curb, convenient installation and replacement.
- Horizontal or downflow application.
- Convenient access panels, one side service.
- Rotatable control box, slide out design for blower motor (Easy for service).
- AHRI/ETL



SPECIFICATIONS

Model		CDP24-15	CDP36-15	CDP48-15
Power Supply	Volt-Ph-Hertz	208/230-1-60	208/230-1-60	208/230-1-60
Cooling	Cooling (BTU/h)	22,800	34,000	46,500
	EER2(BTU/h.w)	11	11	11
	SEER2	13.4	13.4	13.4
Heating	Heating (BTU/h)	22,800	34,200	48,000
	HSPF2	6.7	6.7	6.7
Compressor	Volts	208/230	208/230	208/230
	RLA	10.0	16.0	23.0
	LRA	34.8	72.0	108.0
	Type	Rotary	Rotary	Scroll
Condenser Fan Motor	Number Of Motors	1	1	1
	RPM	880	830	1,050
	Horsepower	1/12	1/6	1/3
	FLA	0.61	1.0	1.9
Evaporator Fan Motor	Number Of Motors	1	1	1
	No. Speeds	1	1	1
	Horsepower	1/5	1/2	1/2
	Nominal CFM	660	855	890
Refrigeration	Refrigerant Type	R410A	R410A	R410A
	Refrigerant Charge (lb-oz.)	6-6	7-15	9-4
Electrical Data	Minimum Circuit Ampacity	15.1	24.2	35.2
	Max. Overcurrent Protection	25	40	50
	Min / Max Volts	187/253	187/253	187/253
Dimensions and Weight	Equipment Weight (lbs)	400	411	537
	Shipping Weight (lbs)	418	429	576
	L x W x H	50-11/16 x 35-1/16 x 46-13/16	50-11/16 x 35-1/16 x 46-13/16	50-9/16x46-13/16x51-7/16



CDP Series

Heat Pump Package Units
2 Tons up to 5 Tons

13.4 SEER2



Horizontal and Downflow Discharge



SPECIFICATIONS

Model		CDP60-15	CDP60-15-T
Power Supply	Volt-Ph-Hertz	208/230-1-60	208/230-3-60
Cooling	Cooling (BTU/h)	57,000	57,000
	EER2(BTU/h.w)	11	11.8
	SEER2	13.4	14.0
Heating	Heating (BTU/h)	57,000	57,000
	HSPF2	6.7	8.0
Compressor	Volts	208/230	208/230
	RLA	26.0	22.0
	LRA	127.9	136.8
	Type	Scroll	Scroll
Condenser Fan Motor	Number Of Motors	1	1
	RPM	1,050	1,050
	Horsepower	1/3	1/3
	FLA	1.9	2.0
Evaporator Fan Motor	Number Of Motors	1	1
	No. Speeds	1	1
	Horsepower	3/4	3/4
	Nominal CFM	990	1,025
Refrigeration	Refrigerant Type	R410A	R410A
	Refrigerant Charge (lb-oz.)	11-14	6-10
Electrical Data	Minimum Circuit Ampacity	38.4	35.2
	Max. Overcurrent Protection	50	50
	Min / Max Volts	187/253	187/253
Dimensions and Weight	Equipment Weight (lbs)	568	557
	Shipping Weight (lbs)	607	596
	L x W x H	50-9/16x46-13/16x51-7/16	50-9/16x46-13/16x51-7/16



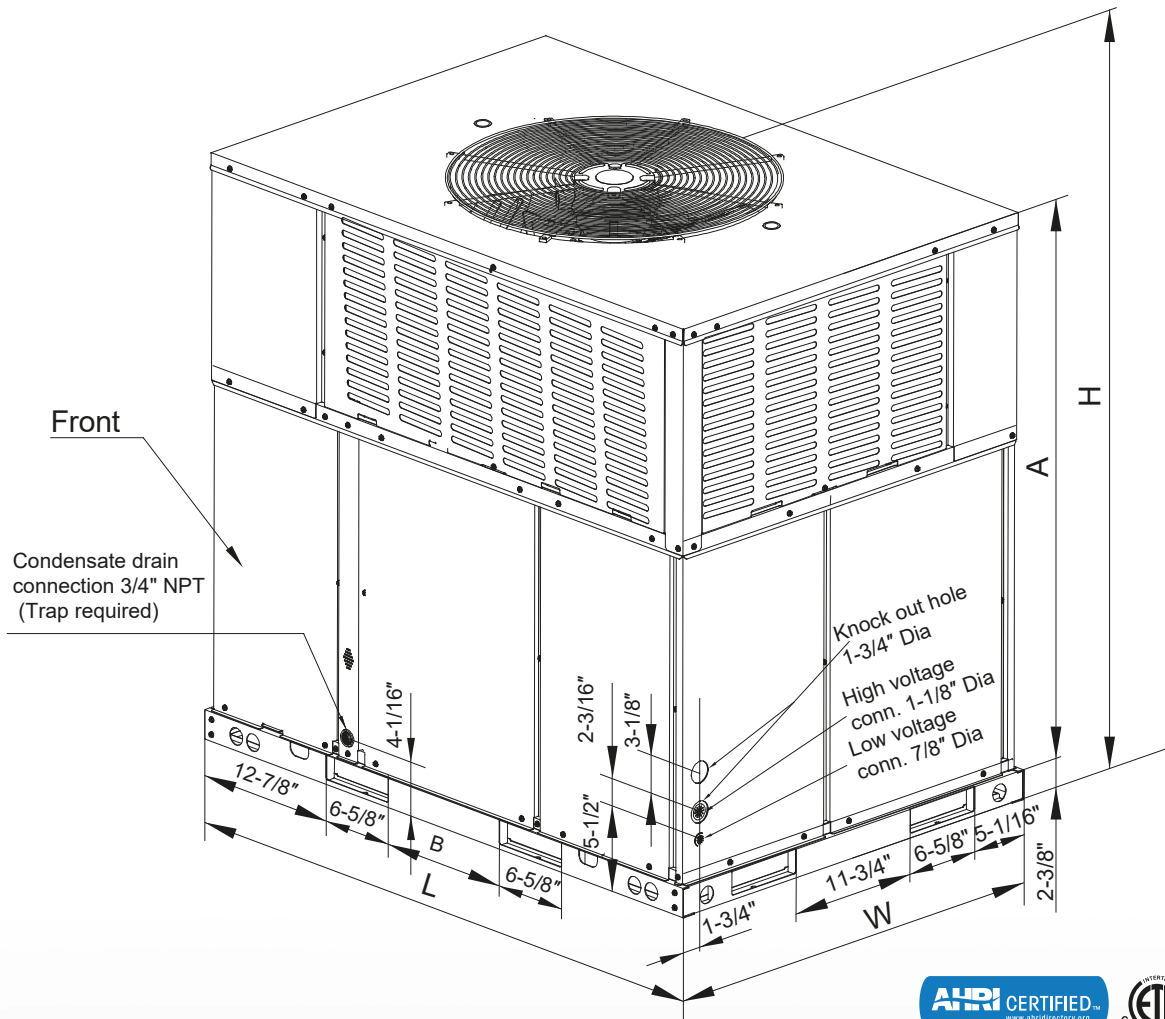
CDP Series

Heat Pump Package Units
2 Tons up to 5 Tons

13.4 SEER2



Horizontal and Downflow Discharge



UNIT DIMENSION AND WEIGHTS

Model size	Dimensions				
	"L" in.	"W" in.	"H" in.	"A" in.	"B" in.
Heat Pump					
24/36	50-11/16	35-1/16	46-13/16	44-1/16	11-3/4
48/60	51-9/16	44-13/16	51-7/16	47-5/16	19-11/16

Heating Kit (Optional)

PART No.
CHE5-05B
CHE5-08B
CHE5-10B
CHE5-15B
CHE5-20B

ComfortStar®

Air Conditioning & Heating Products

RESIDENTIAL LINE PRODUCT

1.5 Tons up to 5 Tons
14.3 and 15.2 SEER2

SEER2



Comfort, it's in our name

E-mail: info@comfortstarusa.com | www.comfortstarusa.com

12201 N. W. 107TH AVENUE, MEDLEY, FL 33178

TOLL FREE: 1-866-524-9898 | PHONE: 305-500-9898 | FAX: 305-500-9896

All rights reserved. Printed in the United States of America. This publication is protected by Copyright and permission must be obtained by eAir, LLC prior to any reproduction or transmission in any form or by any means, electronic, mechanical, photocopying, recording or likewise. Warranty registration is not required in California.

RLP | 2024