

Project Name:		Approval:	
Location:		Date:	
Engineer:		Construction:	
Submitted to:		Unit #:	
Submitted by:		Drawing #:	
Reference:			

Sale model	89HP15CD35
------------	------------



PERFORMANCE DATA

Power supply	V,Hz,Ph	230/208V,60Hz
--------------	---------	---------------

Cooling

Capacity	Btu/h	14700/14500
Input	W	1531/1510
Current	A	6.66/7.26
EER	Btu/w	9.7

Heating(Heat pump)

Capacity	Btu/h	13500/13200
Input	W	1323/1294
Current	A	5.74/6.2
COP	W/W	3.0

Heating(PTC)

		PTC 1
Capacity	Btu/h	10900/8900
Input	W	3519/2850
Current	A	15.3/13.7
MINIMUM CIRCUIT AMPACITY	A	20

Compressor Electrical

Model	ASM135N1UEZ	
Type	ROTARY	
Brand	GMCC	
Capacity	Btu/h	13648
Input	W	1310
Rated current(RLA)	A	6.35
Locked rotor Amp(LRA)	A	34.5
Thermal protector	N/A	
Thermal protector position	N/A	
Capacitor	uF	35
Refrigerant oil/oil charge	ml	SUNISO 4GSD. 350
Connection wiring	12AWGx3	12AWGx3
Plug type	LCDI 6-20P	LCDI 6-30P
Thermostat type	Electronic Control	

SYSTEM DATA

Design pressure	PSIG	540/300
Refrigerant type	oz	R410A/37.04ozs
Application area (Cooling EPA)	sq.ft	550-700
Application area (Cooling Standard)	m2	20-29

UNIT DIMENSION

Dimension(W*D*H) (without wall sleeve)	inch	42x21x16
Packing (W*D*H)	inch	45.1x25.4x19.3
Net/Gross weight	Kg	52.8/63.9
	lbs.	116.4/140.9
Loading quantity 20' /40' /40'HQ	Pieces	72/144/180

INDOOR SIDE DATA

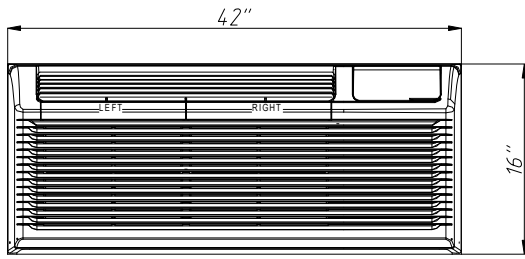
Indoor side fan motor		
Model	YDK20-6BS	
Brand	Welling	
Input	35.5	
FLA / OUTPUT	A / Wat	0.155 / 21
Capacitor	uF	1.0
Speed(Hi/Mi/Lo)	r/min	1110/1070/1040
Air flow & Noise level		
Indoor side air flow (Hi/Mi/Lo)	m3/h	720/690/670
Indoor side air flow (Hi/Mi/Lo)	CFM	423/405/394
Indoor side noise level (Hi/Mi/Lo)	dB(A)	53/50/45

OUTDOOR SIDE DATA

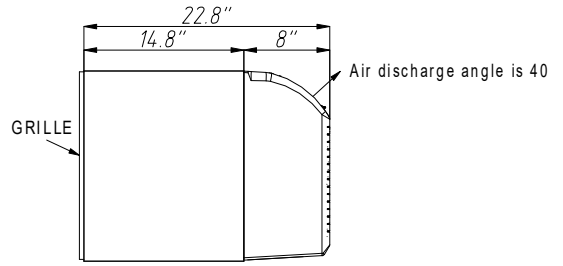
Outdoor side fan motor		
Model	YDK40-4B	
Brand	Welling	
Input	87	
FLA / OUTPUT	A / Wat	0.41 / 58
Capacitor	uF	3.0
Speed	r/min	1590
Air flow & Noise level		
Outdoor side noise level	dB(A)	66

Operation temperature

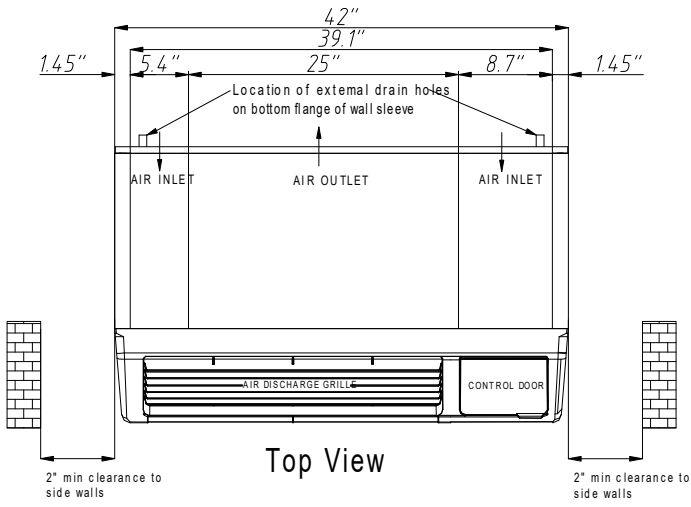
Indoor (cooling/ heating)	°C	17-32/0-27
	°F	62°F-90°F/32°F-80°F
Outdoor(cooling/heating)	°C	18-43/-5-24
	°F	64°F-109°F/23°F-76°F



Front View



Side View



Top View