

**Ceiling&Floor Heat Pump System**

|               |               |
|---------------|---------------|
| Location:     | Approval:     |
| Engineer:     | Date:         |
| Submitted to: | Construction: |
| Submitted by: | Unit #:       |
| Reference:    | Drawing #:    |



**INDOOR SPEINDOOR SPECIFICATIONCIFICATION**

|   |                                       |                       |
|---|---------------------------------------|-----------------------|
| Indoor Air Flow (Turbo/H/M/L/Si) (CFM)    | 735.8 / 706.3 / 606.3 / 453.2 / 376.7 |                       |
| Indoor Noise Level (Turbo/H/M/L/Si) (dBA) | 51.5/49.0/45.0/34.0/29.0              |                       |
| Dimension (W×D×H)                         | inch                                  | 42.05 x 26.57 x 9.25  |
|   | mm                                    | 1068.0×675.0×235.0    |
| Package (W×D×H)                           | inch                                  | 45.08 x 29.72 x 12.52 |
|   | mm                                    | 1145×755×318          |
| Net/Gross Weight                          | lbs                                   | 61.29/73.19           |
|   | kg                                    | 27.8/33.2             |

**OUTDOOR SPECIFICATION**

|                              |               |                       |
|------------------------------|---------------|-----------------------|
| Compressor Type              | ROTARY        |                       |
| Compressor Model             | KTM240D46UKT2 |                       |
| Refrigerant                  | R454B         |                       |
| Refrigerant Oil Charge(mL)   | 620           |                       |
| Refrigerant Oil              | VG74          |                       |
| Outdoor Air Flow (Max) (CFM) | 2236.7        |                       |
| Outdoor Noise Level (dBA)    | 61.5          |                       |
| Dimension (W×D×H)            | inch          | 37.24 x 16.14 x 31.89 |
|                              | mm            | 946.0×410.0×810.0     |
| Package (W×D×H)              | inch          | 42.91 x 19.68 x 34.84 |
|                              | mm            | 1090×500×885          |
| Net/Gross Weight             | lbs           | 130.29/141.31         |
|                              | kg            | 59.1/64.1             |

**EFFICIENCY**

| Cooling |      | Heating |      |
|---------|------|---------|------|
| SEER2   | 20.4 | HSPF2-4 | 12.1 |
| EER2    | 12.0 | COP     | 3.34 |

**PERFORMANCE of Cooling**

| Cooling (Btu/hr)                |   |
|---------------------------------|---|
| Rated Capacity                  | 22000   |
| Min/Max Capacity                | 12700~25600   |
| Moisture Removal(L/h)           | 2.73  |
| Standard Operating Range(°F/°C) | -22~122(-30~50)                                     |
| Conditions:                     | Indoor: 80°F DB/67°F WB<br>Outdoor: 95°F DB/75°F WB |

**PERFORMANCE of Heating**

| Heating (Btu/hr)                |   |
|---------------------------------|---|
| 1. @ 47°F Rated                 | 26000   |
| 1. @ 47°F Min/Max Capacity      | 11300~29500   |
| 2. @ 17°F Rated                 | 20200   |
| 3. @ 5°F Rated: Capacity / COP  | 24200/2.16  |
| 3. @ 5°F Max: Capacity          | 24200   |
| Standard Operating Range(°F/°C) | -22~75(-30~24)                                      |
| 1. Conditions:                  | Indoor: 70°F DB/60°F WB<br>Outdoor: 47°F DB/43°F WB |
| 2. Conditions:                  | Indoor: 70°F DB/60°F WB<br>Outdoor: 17°F DB/15°F WB |
| 3. Conditions:                  | Indoor: 70°F DB/60°F WB<br>Outdoor: 5°F DB/5°F WB   |

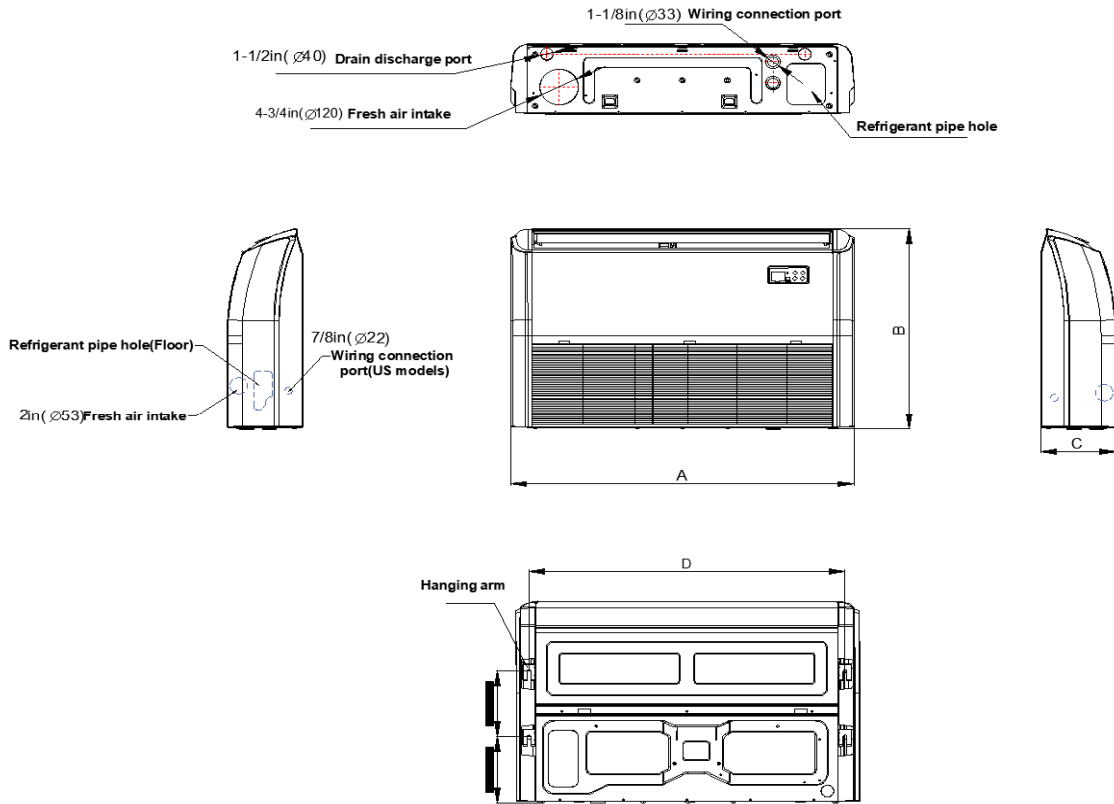
**ELECTRICAL**

|                                  |  |
|----------------------------------|--|
| Power Supply                     | 208/230V,60Hz,1Ph                      |
| System MCA                       | 24.90                                  |
| Connection Wiring                | 14#x4                                  |
| System MOCP                      | 25                                     |
| Compressor RLA                   | 15.0                                   |
| Outdoor Fan Motor RLA            | 1.3                                    |
| Outdoor Fan Motor W              | 120                                    |
| Indoor Fan Motor RLA             | 1.0                                    |
| Indoor Fan Motor W               | 90                                     |
| System Power Input @ Cooling (W) | 1833(980 ~ 2300)                       |
| System Power Input @ Heating (W) | 2194(630 ~2570)                        |
| MCA: Min. circuit amps (A)       | MOCP: Max. over current protection (A) |
| RLA: Rated load amps (A)         | W: Fan motor rated output (W)          |

**PIPING**

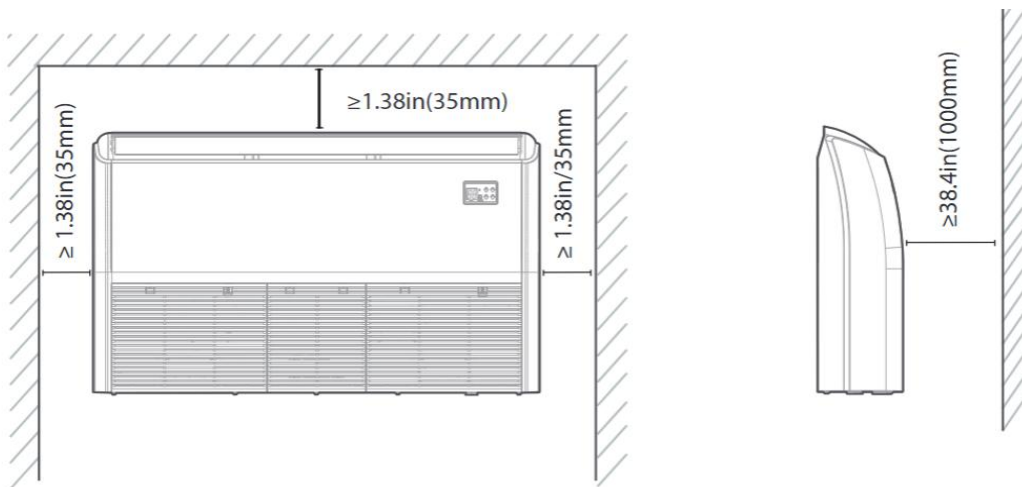
|   |                    |
|---|--------------------|
| Throttle type(Indoor)                           | N/A                |
| Throttle type(Outdoor)                          | EXV+Throttle valve |
| Liquid Size                                     | 9.52mm(3/8in)      |
| Gas Size  | 15.9mm(5/8in)      |
| Max. Piping Length(ft/m)                        | 164.00(50)         |
| Max. Height Difference(ft/m)                    | 82.00(25)          |
| Max. Pre-charged Length(ft/m)                   | 24.6(7.5)          |
| Refrigerant Pre-charged Amount(oz/kg)           | 63.49(1.80)        |
| Additional Charge of Refrigerant((oz/ft)/(g/m)) | 0.32(30)           |
| Connection Method                               | Flared             |

## Indoor Unit Dimension

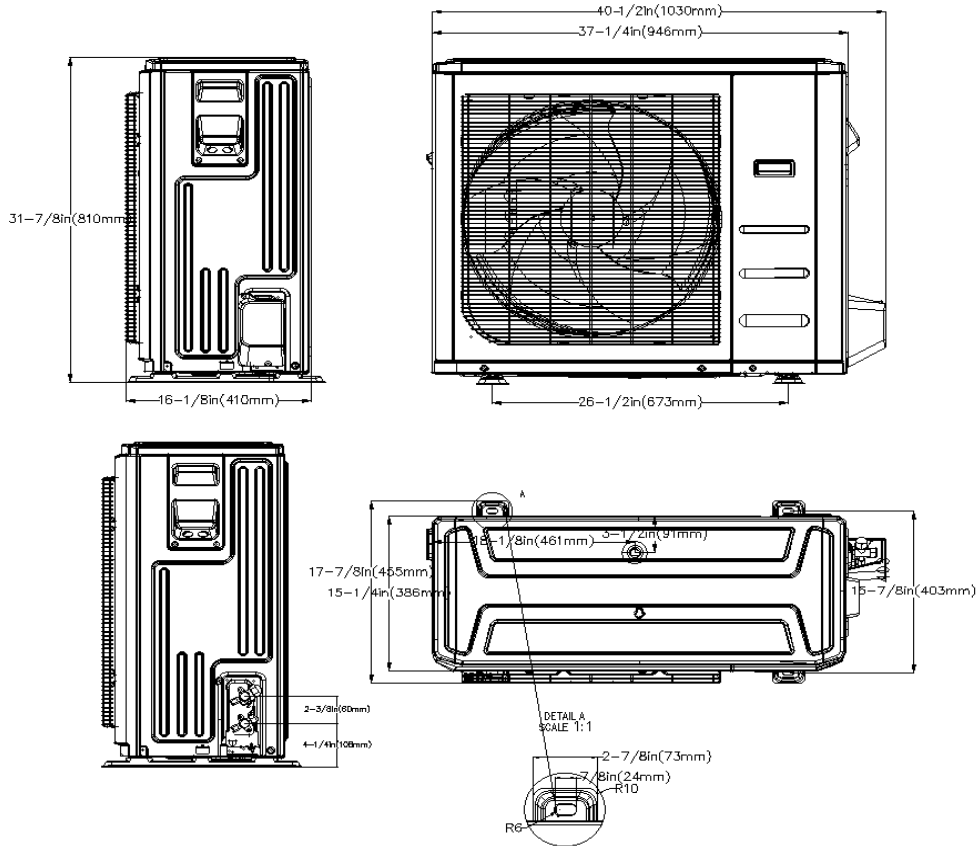


| Model       | A            | B               | C              | D                |
|-------------|--------------|-----------------|----------------|------------------|
| 18K/24K     | 42in(1068mm) | 26-1/2in(675mm) | 9-1/4in(235mm) | 38-3/4in(983mm)  |
| 36K/48K/60K | 65in(1650mm) | 26-1/2in(675mm) | 9-1/4in(235mm) | 61-5/8in(1565mm) |

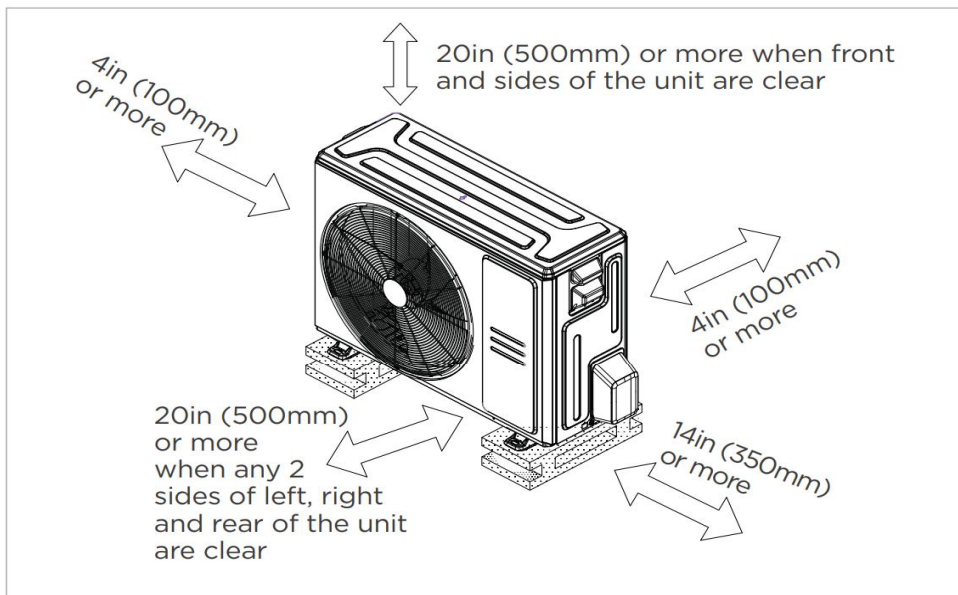
## Installation Instruction



### Outdoor Unit Dimension



### Installation Instruction



Meets all spatial requirements shown in Installation Clearance Requirements above.

## FEATURES

- 2 Style Installation
- 3D Airflow
- Refrigerant leakage detection sensor
- Humidity sensor
- “88” display tube
- 1~100% fan speed setting
- WiFi capability: through WiFi dongle or wired controller with built-in WiFi
- OTA(by using WiFi dongle)
- 2-pin connector(HA/HB) for programmable wired controller
- Multiple control options available:
  - Two way communication wired controller with built-in WiFi:AWC-8P-LC-WIFI
  - Infrared wired controller: AWC-4
  - Wireless remote controller
  - Third-Party 24V Thermostat

\*24V interface is required.