

**Air Handler Heat Pump System**

Location:	Approval:
Engineer:	Date:
Submitted to:	Construction:
Submitted by:	Unit #:
Reference:	Drawing #:



**INDOOR SPEINDOOR SPECIFICATIONCIFICATION**

<b>Indoor Air Flow (Turbo/H/M/L/Si) (CFM)</b>	824.0 / 759.3 / 694.5 / 629.8 / N/A	
<b>Indoor Noise Level (Turbo/H/M/L/Si) (dBA)</b>	N/A/43.5/41.5/28.5/N/A	
<b>Dimension (W×D×H)</b>	inch	21.02 x 17.52 x 45.00
	mm	534.0×445.0×1143.0
<b>Package (W×D×H)</b>	inch	26.57 x 20.87 x 48.62
	mm	675×530×1235
<b>Net/Gross Weight</b>	lbs	104.28/125.88
	kg	47.3/57.1

**OUTDOOR SPECIFICATION**

<b>Compressor Type</b>	ROTARY	
<b>Compressor Model</b>	KTM240D46UKT2	
<b>Refrigerant</b>	R454B	
<b>Refrigerant Oil Charge(mL)</b>	620	
<b>Refrigerant Oil</b>	VG74	
<b>Outdoor Air Flow (Max) (CFM)</b>	2236.7	
<b>Outdoor Noise Level (dBA)</b>	58.5	
<b>Dimension (W×D×H)</b>	inch	37.24 x 16.14 x 31.89
	mm	946.0×410.0×810.0
<b>Package (W×D×H)</b>	inch	42.91 x 19.68 x 34.84
	mm	1090×500×885
<b>Net/Gross Weight</b>	lbs	122.13/132.28
	kg	55.4/60.0

**EFFICIENCY**

Cooling		Heating	
<b>SEER2</b>	19.7	<b>HSPF2-4</b>	9.0
<b>EER2</b>	11.7	<b>COP</b>	3.53

**PERFORMANCE of Cooling**

Cooling (Btu/hr)	
<b>Rated Capacity</b>	24000
<b>Min/Max Capacity</b>	6700~29600
<b>Moisture Removal(L/h)</b>	2.6
<b>Standard Operating Range(°F/°C)</b>	-13~122(-25~50)
Conditions:	Indoor: 80°F DB/67°F WB Outdoor: 95°F DB/75°F WB

**PERFORMANCE of Heating**

Heating (Btu/hr)	
<b>1. @ 47°F Rated</b>	25000
<b>1. @ 47°F Min/Max Capacity</b>	5800~33800
<b>2. @ 17°F Rated</b>	17600
<b>3. @ 5°F Rated: Capacity / COP</b>	18000/2.2
<b>3. @ 5°F Max: Capacity</b>	18000
<b>Standard Operating Range(°F/°C)</b>	-13~75(-25~24)
1. Conditions:	Indoor: 70°F DB/60°F WB Outdoor: 47°F DB/43°F WB
2. Conditions:	Indoor: 70°F DB/60°F WB Outdoor: 17°F DB/15°F WB
3. Conditions:	Indoor: 70°F DB/60°F WB Outdoor: 5°F DB/5°F WB

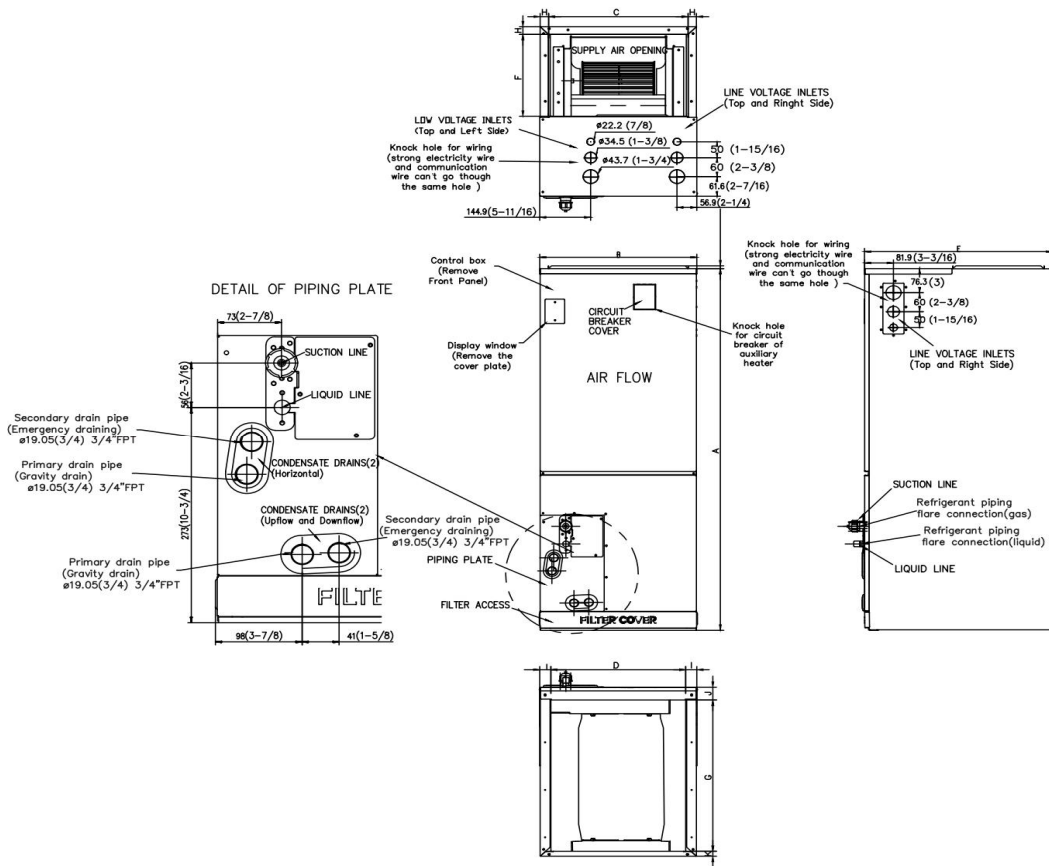
**ELECTRICAL**

<b>Power Supply</b>	208/230V,60Hz,1Ph
<b>System MCA</b>	24
<b>Connection Wiring</b>	AWG 14-4
<b>System MOCP</b>	25
<b>Compressor RLA</b>	15.4
<b>Outdoor Fan Motor RLA</b>	1
<b>Outdoor Fan Motor W</b>	120
<b>Indoor Fan Motor RLA</b>	3
<b>Indoor Fan Motor W</b>	250
<b>System Power Input @ Cooling (W)</b>	2051(600 ~ 2840)
<b>System Power Input @ Heating (W)</b>	2076(410 ~ 2950)
<b>MCA: Min. circuit amps (A)</b>	<b>MOCP: Max. over current protection (A)</b>
<b>RLA: Rated load amps (A)</b>	<b>W: Fan motor rated output (W)</b>

**PIPING**

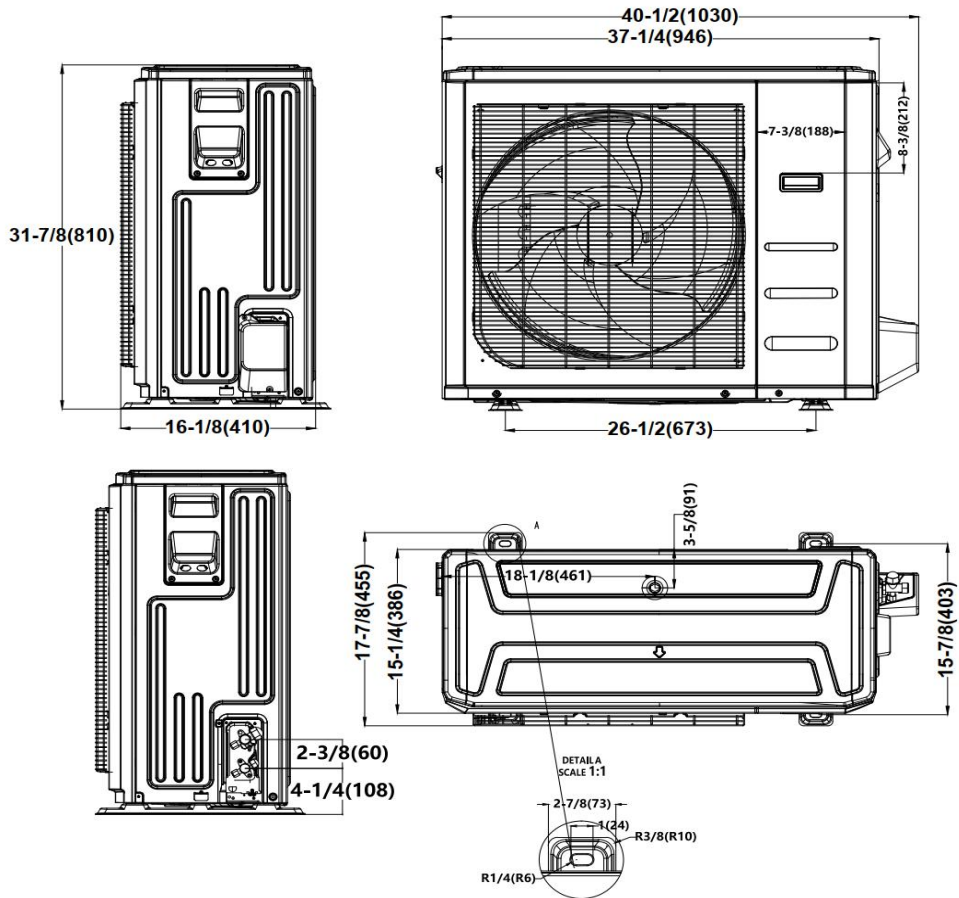
<b>Throttle type(Indoor)</b>	N/A
<b>Throttle type(Outdoor)</b>	EXV+Throttle valve
<b>Liquid Size</b>	9.52mm(3/8in)
<b>Gas Size</b>	15.9mm(5/8in)
<b>Max. Piping Length(ft/m)</b>	164(50)
<b>Max. Height Difference(ft/m)</b>	82(25)
<b>Max. Pre-charged Length(ft/m)</b>	24.6(7.5)
<b>Refrigerant Pre-charged Amount(oz/kg)</b>	70.55(2)
<b>Additional Charge of Refrigerant((oz/ft)/(g/m))</b>	0.32(30)
<b>Connection Method</b>	Flared

## Indoor Unit Dimension

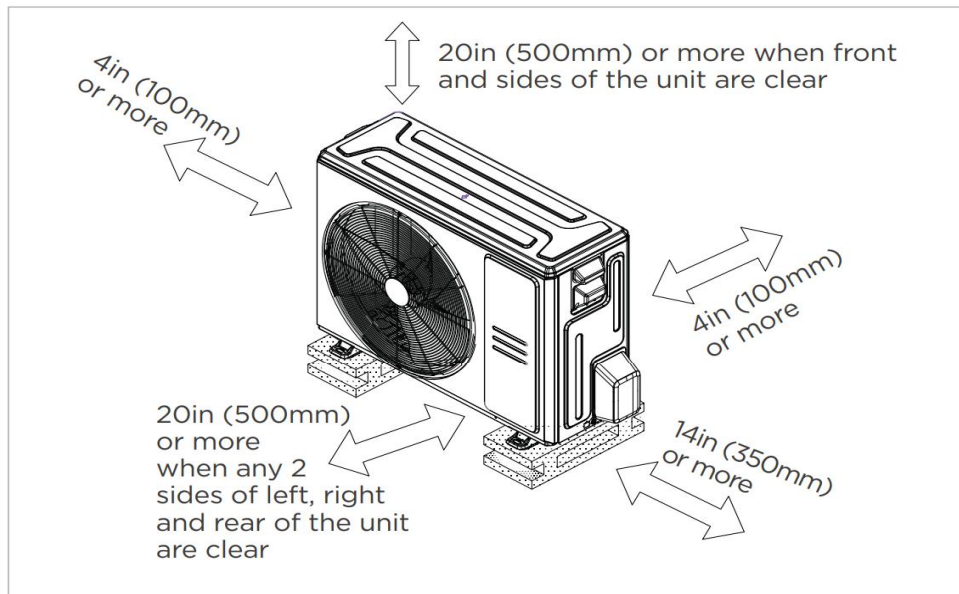


Dimensions	Model	18k/24k		30k/36k		48k/60k	
		inch	mm	inch	mm	inch	mm
A	Model Height	45	1143	49	1245	53	1346
B	Model Width	17-1/2	445	21	534	24-1/2	622
C	Supply Air Opening Width	15-5/8	397	19-1/8	486	22-5/8	575
D	Return Air Opening Width	15-1/8	384	18-5/8	473	22-1/8	562
E	Model Depth	21	534	21	534	21	534
F	Supply Air Opening Depth	10-1/4	260	10-1/4	260	10-1/4	260
G	Return Air Opening Depth	18-3/4	476	18-3/4	476	18-3/4	476
H	Supply Air Opening Clearance	15/16	24	15/16	24	15/16	24
I	Return Air Opening Side Clearance	1-1/4	32	1-1/4	32	1-1/8	28
J	Return Air Opening Front Clearance	1-1/2	38	1-5/8	41	1-5/8	41
K	Return Air Opening Back Clearance	5/8	16	5/8	16	3/4	19

### Outdoor Unit Dimension

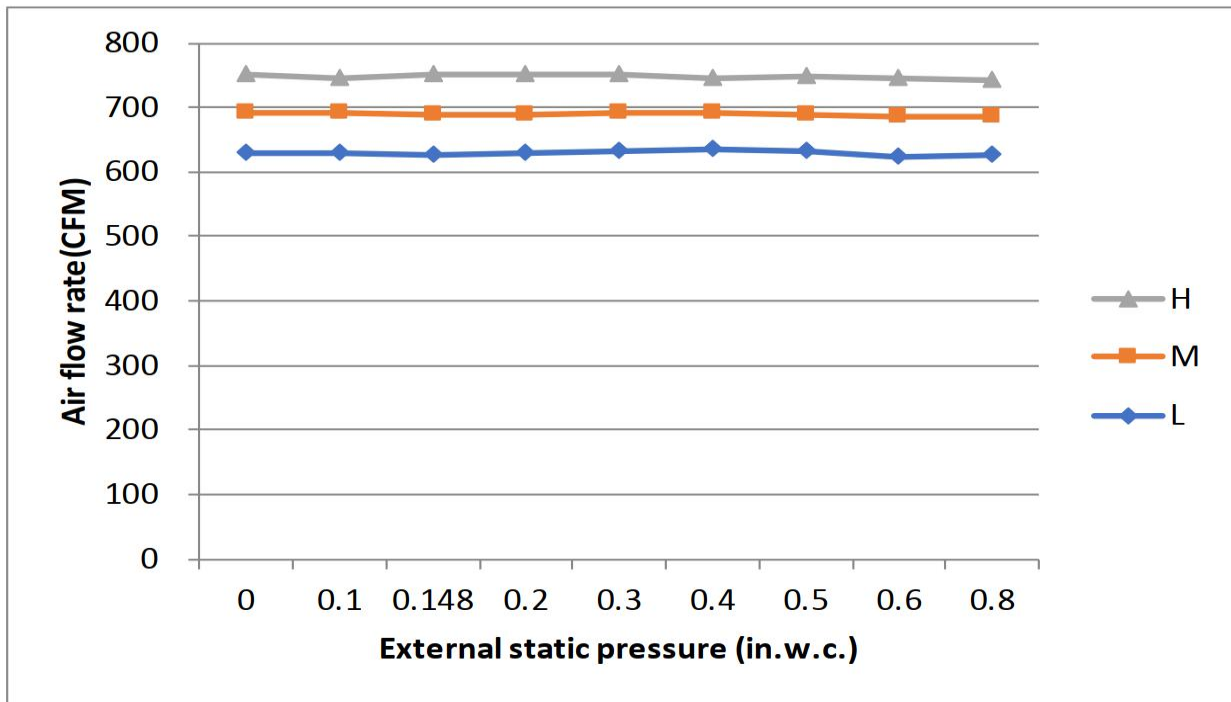


### Installation Instruction



Meets all spatial requirements shown in Installation Clearance Requirements above.

### Fan Performance For Indoor Unit



### Features

- Multi-position installation: horizontal(left or right), vertical( up or down)
- Aluminum Coil
- Constantly Air Flow system up to 0.80 In.W.G
- 1 inch R4.2 fiberglass free insulation reduces condensation and boosts efficiency(optional)
- Optional Auxiliary heat kit up to 25kW
- Easy Maintenance
- Multiple control options available:
  - Two way communication wired controller with built-in WiFi:AWC-8P-LC-WIFI
  - Wireless remote controller
  - Third-Party 24V Thermostat
- High efficiency up to 19.7 SEER2, 12.1 EER2, 9.8 HSPF2
- Chassis heater and crankcase heater equipped as standard