

Submittal

TAG: _____

PRODUCT NAME _____
LOCATION _____
ARCHITECT _____
ENGINEER _____
CONTRACTOR _____
SUBMITTED BY _____ DATA _____

UNIT SUMMARY

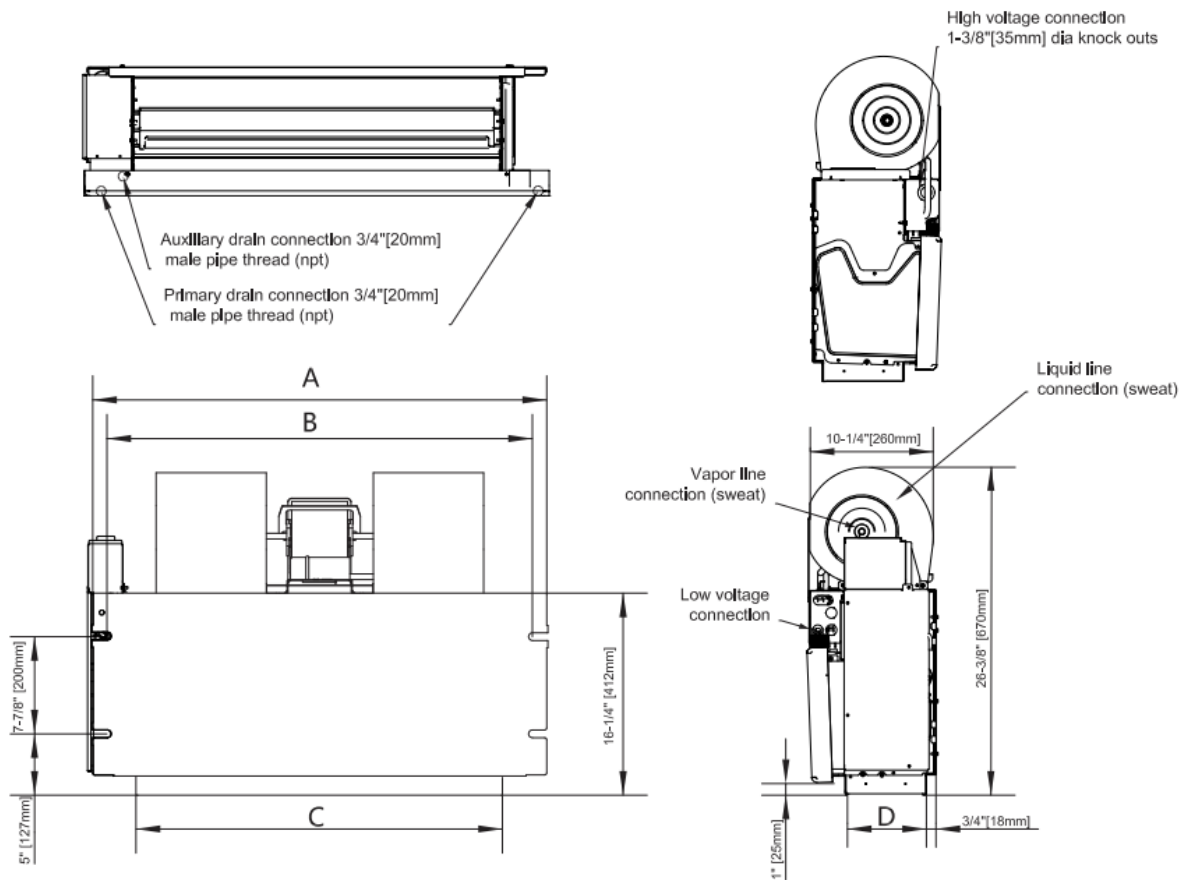
Quantity						
Unit Designation						
Model No.						
Cooling Input						
Cooling Output						
CFM/ESP						
Electrical						
Minimum Ampacity						
Max Overcurrent Protection						
Net Unit Weight						
Accessory						
Catalog Form Number						

ACCESSORIES

NOTES

CHX7-EU Series Ceiling-mounted

Cooling capacity: 24 kBTU/h



Model	Dimensions (in.) [mm]				Unit Operating Weight (lbs.) [kg]
	A	B	C	D	
CHX7-18EU-15	37-1/4 [946]	34-11/16 [881]	30 [762]	6-1/2 [165]	80.5 [36.5]
CHX7-24EU-15	37-1/4 [946]	34-11/16 [881]	30 [762]	6-1/2 [165]	80.5 [36.5]
CHX7-30EU-15	49-1/4 [1251]	46-11/16 [1186]	42 [1067]	6-1/2 [165]	98 [44.5]
CHX7-36EU-15	49-1/4 [1251]	46-11/16 [1186]	42 [1067]	6-1/2 [165]	98 [44.5]

Specifications

	CHX7-24EU-15
NOMINAL RATING	
Cooling (BTU/h)	24,000
External Static Pressure (in.w.g)(Pa)	45
ELECTRICAL DATA	
Voltage / Phase (60Hz)	208/230V-1Ph
Min. / Max. Voltage (V)	187/253
Min. Circuit Amps (MCA) (A)	3.3
Max. Overcurrent Protection (MOP) (A)	15
FAN MOTOR	
Motor Type	ECM
Capacitor (uF)	/
Horsepower (HP)	1/3
Rated RPM	1050
Full Load Amps (FLA) (A)	2.6
FAN BLOWER	
Material	Metal
Type	Centrifugal
Diameter (in.)	7
Height (in.)	8
EVAPORATOR COIL	
Type	Tube & Fin
Tube Material	Aluminum
Tube Size (in.)	9/32
SOUND POWER (dB(A))	51
REFRIGERANT CONNECTION SIZE	
Liquid Line Size (O.D.) (in.)	3/8
Suction Line Size (O.D.) (in.)	3/4

Airflow Data

Model	Motor Speed	CFM Wet Coil without Filter or Electric Heat, Uncased							
		External Static Pressure-Inches W.C. [kPa]							
		0[0]	0.1[.025]	0.2[.050]	0.3[.075]	0.38[.095]	0.4[.100]	0.5[.125]	0.6[.150]
18K	1	778	708	648	585	527	505	442	387
	2	904	843	789	735	685	670	621	549
	3	1018	963	909	861	824	815	766	694
	4	1122	1069	1021	978	945	933	888	692
	5	1225	1178	1128	1087	1050	1031	901	707
24K	1	778	708	648	585	527	505	442	387
	2	904	843	789	735	685	670	621	549
	3	1018	963	909	861	824	815	766	694
	4	1122	1069	1021	978	945	933	888	692
	5	1225	1178	1128	1087	1050	1031	901	707
30K	1	887	786	675	578	506	491	412	338
	2	1032	948	854	763	695	678	608	538
	3	1167	1090	1012	936	868	846	771	713
	4	1280	1216	1148	1084	1025	1009	930	785
	5	1390	1328	1264	1202	1156	1145	1047	785
36K	1	887	786	675	578	506	491	412	338
	2	1032	948	854	763	695	678	608	538
	3	1167	1090	1012	936	868	846	771	713
	4	1280	1216	1148	1084	1025	1009	930	785
	5	1390	1328	1264	1202	1156	1145	1047	785

--- Shaded boxes represent airflow outside the required 300-450 cfm/ton.

NOTES:

1. Airflow data is without filter or electric heat accessory. Heater adds 0.05 ---in. static.
2. Use wet coil data for determining cooling airflow.
3. Accessory louver panel adds 0.05 ---in. static.
4. When electric heater only is operating, 300CFM for each ton is sufficient except 30K works with 10KW heat (≥900SCFM)

Required CFM Range for Heat Pump Operation

Size	CFM	
	Min	Max
18	450	675
24	600	900
30	750	1125
36	900	1350

Features

- Safe, low-GWP R454B refrigerant with leak alarm function.
- Durable, corrosion-resistant cabinet help prevent energy loss while virtually eliminating condensation.
- All-aluminum coil provides excellent heat transfer and efficiency with enhanced durability and less risk of leakage compared to conventional copper coils.
- Durable, integrated drain pan is made from rust-resistant materials. A gently-sloped design eliminates standing water.
- Variable speed blower motor provides gradual startup and shutdown, not only decreasing energy consumption but contributing to improved air quality and more consistent temperatures.
- Blower compartment- It can reduce sound for quiet operation and save energy.
- Exquisite design-Super slim appearance and compact structure will save much installation space.

ComfortStar®

Add.: 12201 N W 107th Avenue Miami, FL 33178

1.866.524.9898 Toll Free

305.500.9898 Office

305.500.9896 Fax document.

<http://www.comfortstarusa.com>