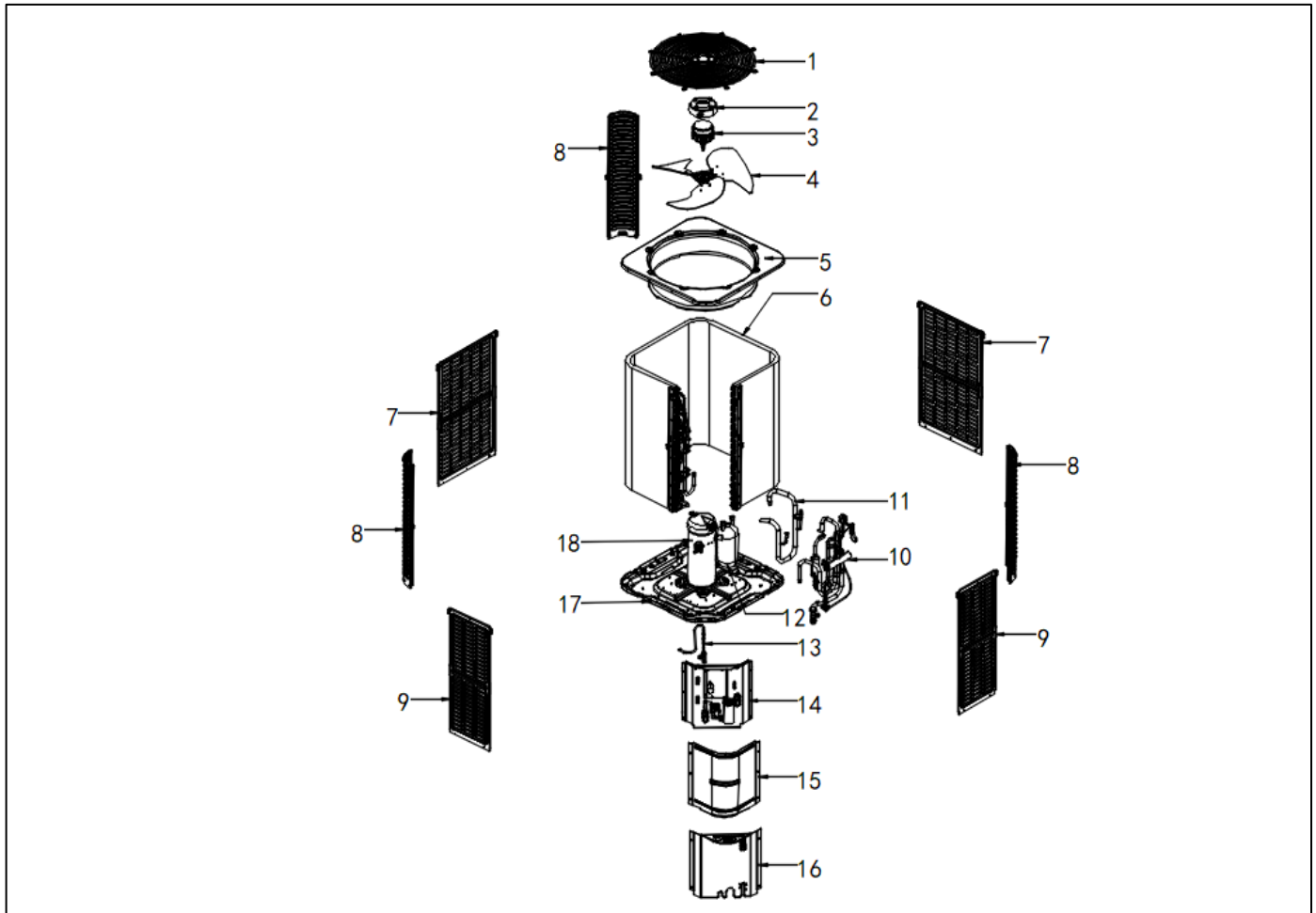


Exploded View

Model

BAH6-48-15

ComfortStar®



| EX_ID | Spare Parts Code | Part Name(EN) | Qty. | Price | Remarks |
|-------|------------------|--------------------|------|-------|---------|
| 1 | 802935000004 | Cover net | 1 | | |
| 2 | 801139090007 | DC Motor Mount | 1 | | |
| 3 | 802401700429 | Outdoor motor | 1 | | |
| 4 | 801200200055 | Axial-flow fan | 1 | | |
| 5 | 801235000118 | Top cover assembly | 1 | | |
| 6 | 801535000083 | Condenser assembly | 1 | | |

| | | | | | |
|-------|--------------|-----------------------------------|---|--|--|
| 6.1 | 801634490195 | Condenser inlet pipe assembly | 1 | | |
| 6.2 | 801635000110 | Condenser output pipe assembly | 1 | | |
| 7 | 801235000121 | Rear side-panel | 2 | | |
| 8 | 801235000117 | Support board | 3 | | |
| 9 | 801235000122 | Left side-panel | 2 | | |
| 10 | 801635000292 | Four way valve assembly | 1 | | |
| 11 | 801635000264 | Suction air pipe weld assembly | 1 | | |
| 12 | 801605000009 | Gas-liquid separator | 1 | | |
| 13 | 801635000268 | High pressure valve assembly | 1 | | |
| 14 | 803335000032 | electric control box components | 1 | | |
| 14.1 | 801335000011 | Electronic control board | 1 | | |
| 13.2 | 802405F00015 | High pressure switch | 1 | | |
| 13.3 | 802405F00005 | Low pressure switch | 1 | | |
| 13.4 | 802300400077 | Condenser temperature sensor (T3) | 1 | | |
| 13.5 | 802301500055 | Ambient temperature sensor (T4) | 1 | | |
| 13.6 | 802300400150 | Exhaust temperature sensor (T5) | 1 | | |
| 13.7 | 802300400092 | Return temperature sensor (TH) | 1 | | |
| 13.8 | 801600100065 | Solenoid valve | 1 | | |
| 13.9 | 802300100261 | AC contactor | 1 | | |
| 13.10 | 802401000046 | Compressor capacitor | 1 | | |
| 15 | 801235000116 | Top panel | 1 | | |
| 16 | 801235000115 | Bottom side panel | 1 | | |
| 17 | 801235000185 | Chassis assembly | 1 | | |
| 18 | 801402100072 | Compressor | 1 | | |