

**Air Handler Heat Pump System**

Location:	Approval:
Engineer:	Date:
Submitted to:	Construction:
Submitted by:	Unit #:
Reference:	Drawing #:


**INDOOR SPECIFICATION**

ESP(in.W.G)		0-0.8
Indoor Noise Level (Turbo/H/M/L/Si) (dBA)		56.5/56.5/53.5/51.5/51.5
Dimension (W×D×H)	inch	49.13 x 23.33 x 10.93
	mm	1248×592.7×277.6
Package (W×D×H)	inch	53.15 x 680 x 13.58
	mm	1350×680×345
Net/Gross Weight	lbs	58/63
	kg	58/63

**OUTDOOR SPECIFICATION**

Compressor Type		ROTARY
Compressor Model		KTM240D46UKT2
Refrigerant		R454B
Refrigerant Oil Charge(mL)		620
Refrigerant Oil		VG74
Outdoor Air Flow (Max) (CFM)		1,766
Outdoor Noise Level (dBA)		59
Dimension (W×D×H)	inch	35.04 x 13.46 x 26.5
	mm	890×342×673
Package (W×D×H)	inch	39.17 x 15.67 x 29.13
	mm	995×398×740
Net/Gross Weight	lbs	101.41/109.13
	kg	46/49.5

**EFFICIENCY**

Cooling		Heating	
SEER2	17.5	HSPF2-4	9.2
EER2	10.8	COP	3.45

**PERFORMANCE of Cooling**

Cooling (Btu/hr)	
Rated Capacity	24,000
Min/Max Capacity	7,400~27,000
Moisture Removal(L/h)	1.91
Standard Operating Range(°F/°C)	-22~122(-30~50)
Rated Cooling Conditions:	Indoor: 80°F DB/67°F WB Outdoor: 95°F DB/75°F WB

**PERFORMANCE of Heating**

Heating (Btu/hr)	
1. @ 47°F Rated	26,000
2. @ 47°F Min/Max Capacity	9,200~32,200
3. @ 17°F Rated	19,800
4. @ 5°F Rated: Capacity / COP	20,000/1.9
5. @ 5°F Max: Capacity	20,000
Standard Operating Range(°F/°C)	-22~75(-30~24)
1. Rated Heating Conditions:	Indoor: 70°F DB/43°F WB Outdoor: 47°F DB/43°F WB
2. Rated Heating Conditions:	Indoor: 70°F DB/60°F WB Outdoor: 17°F DB/15°F WB
3. Heating Conditions, Compressor Operating at Max. Frequency	Indoor: 70°F DB/60°F WB Outdoor: 5°F DB/5°F WB

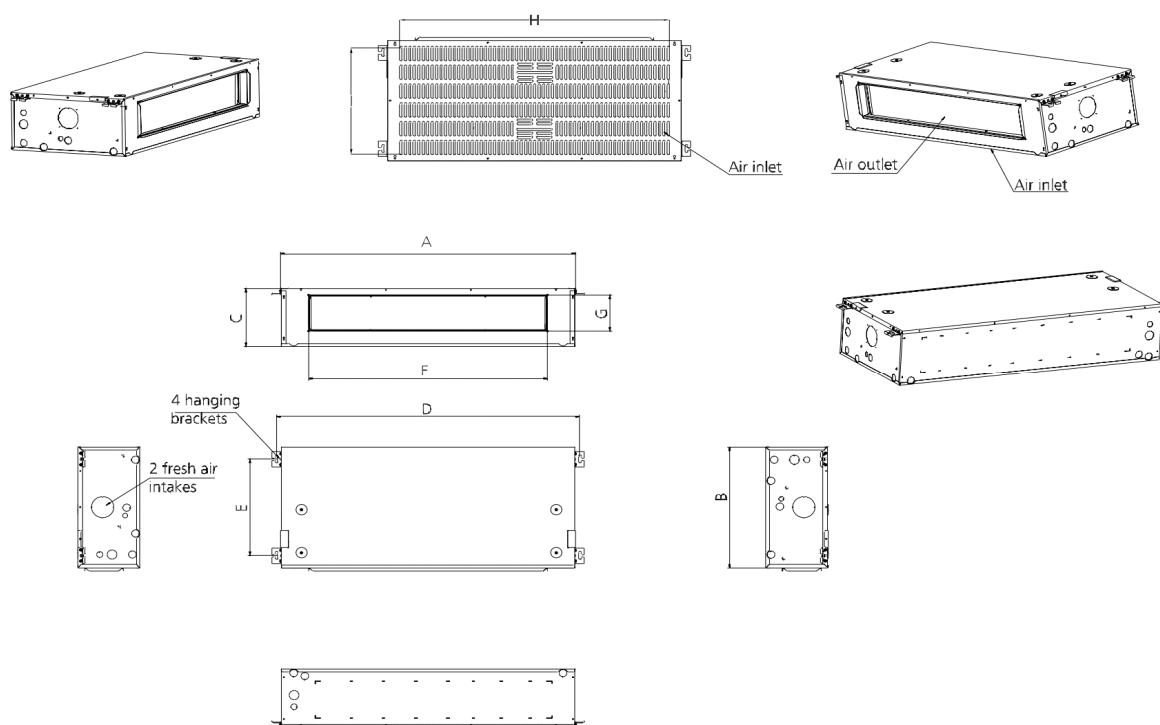
**ELECTRICAL**

Indoor Power Supply	115/208/230,60Hz,1Ph
Indoor MCA 115V/(208/230V)	115V:7;208/230V:5
Indoor MOP	15
Outdoor Power Supply	115/208/230,60Hz,1Ph
Outdoor MCA	19
Outdoor MOP	20
Communication Wiring	AWG 20/2
Compressor RLA	14
Outdoor Fan Motor RLA	1
Outdoor Fan Motor W	80
Indoor Fan Motor RLA	115V:5.5;208/230V:3.5
Indoor Fan Motor W	250
System Power Input @ Cooling (W)	2,222(700 ~ 2,900)
System Power Input @ Heating (W)	2,209(600 ~ 2,750)
MCA: Min. circuit amps (A)	MOCP: Max. over current protection (A)
RLA: Rated load amps (A)	W: Fan motor rated output (W)

**PIPING**

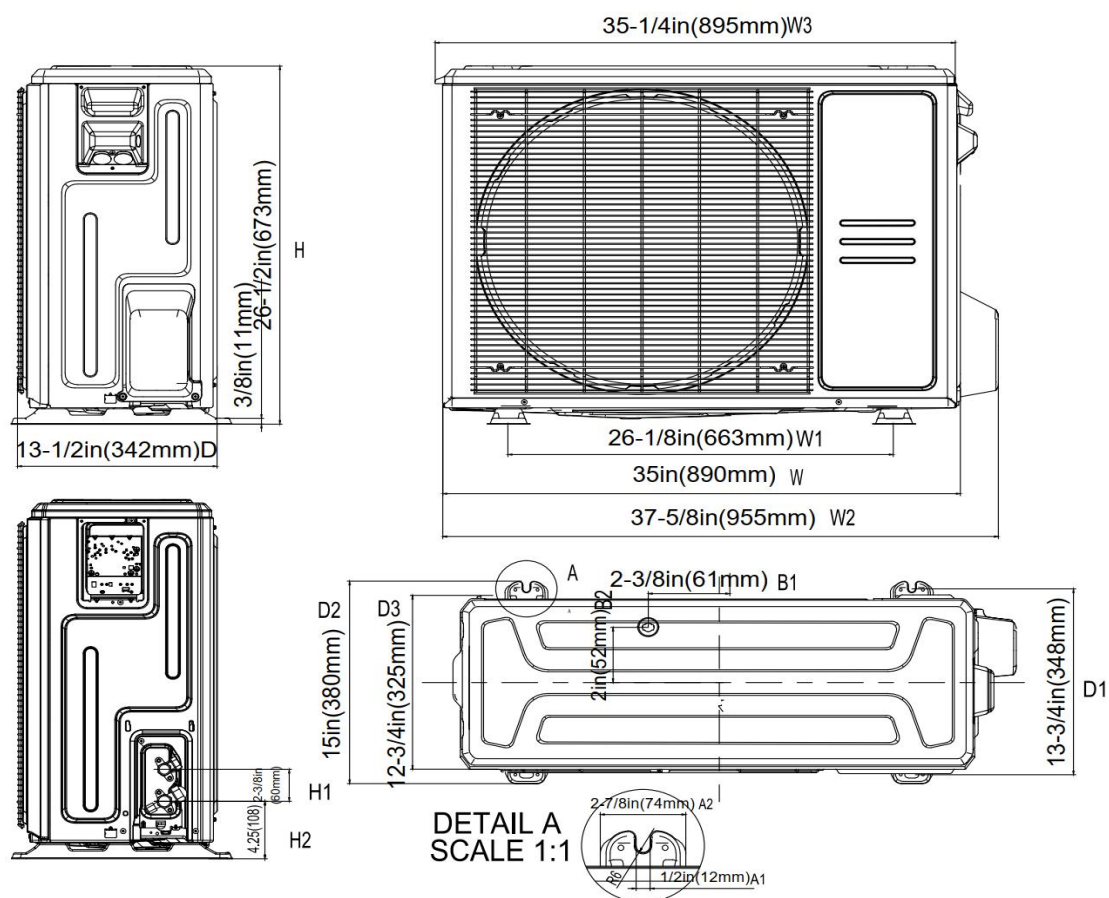
Throttle type(Indoor)	EXV
Throttle type(Outdoor)	EXV
Liquid Size	9.52mm(3/8in)
Gas Size	19mm(3/4in)
Max. Piping Length(ft/m)	164(50)
Max. Height Difference(ft/m)	82(25)
Max. Pre-charged Length(ft/m)	24.6(7.5)
Refrigerant Pre-charged Amount(oz/kg)	74.08(2.1)
Additional Charge of Refrigerant((oz/ft)/(g/m))	0.7(65)
Connection Method	Flared

## Indoor Unit Dimension

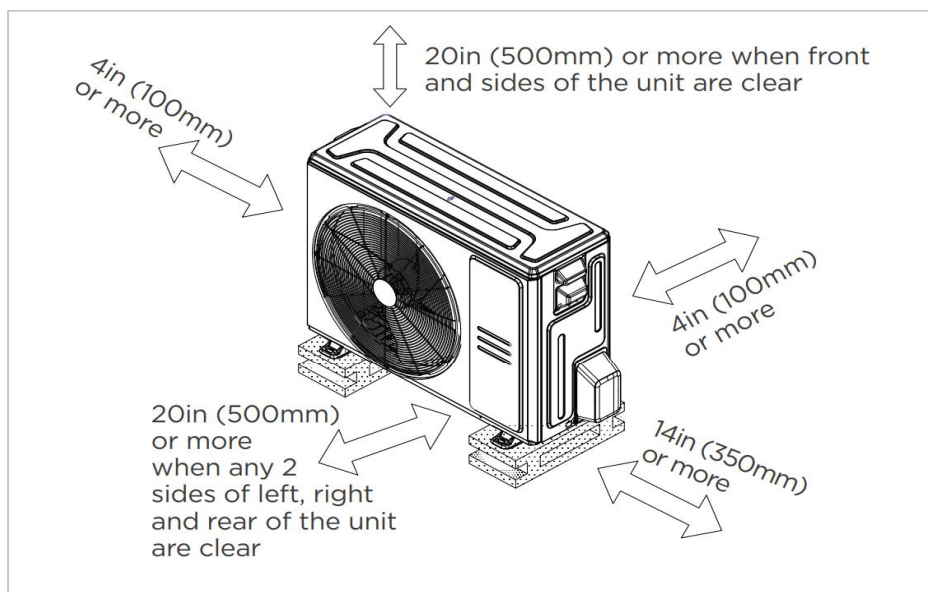


Dimensions \ Model			18k	24k	30k/	36k
			inch(mm)	inch(mm)	inch(mm)	inch(mm)
Outline Dimension	A	Model Model	39-15/16 (1015)	45-7/8 (1165)	51-15/16 (1320)	58-7/8 (1495)
	B	Model Width	23-5/16 (593)	23-5/16 (593)	23-5/16 (593)	23-5/16 (593)
	C	Model Height	10-15/16 (278)	10-15/16 (278)	10-15/16 (278)	10-15/16 (278)
Size Of Mounted Lug	D	Mounted Lug Length	41-5/8 (1057)	47-1/2 (1207)	53-5/8 (1362)	60-1/2 (1537)
	E	Mounted Lug Width	18-1/8 (460)	18-1/8 (460)	18-1/8 (460)	18-1/8 (460)
Air Outlet Opening Size	F	Air Outlet Length	30-5/16 (769)	36-3/16 (919)	42-5/16 (1074)	49-3/16 (1249)
	G	Air Outlet Width	6-7/8 (174)	6-7/8 (174)	6-7/8 (174)	6-7/8 (174)
Air Return Opening Size	H	Air Return Length	38-3/8 (975)	44-5/16 (1125)	50-3/8 (1280)	57-1/4 (1455)
	I	Air Return Width	21-1/8 (536)	21-1/8 (536)	21-1/8 (536)	21-1/8 (536)

## Outdoor Unit Dimension



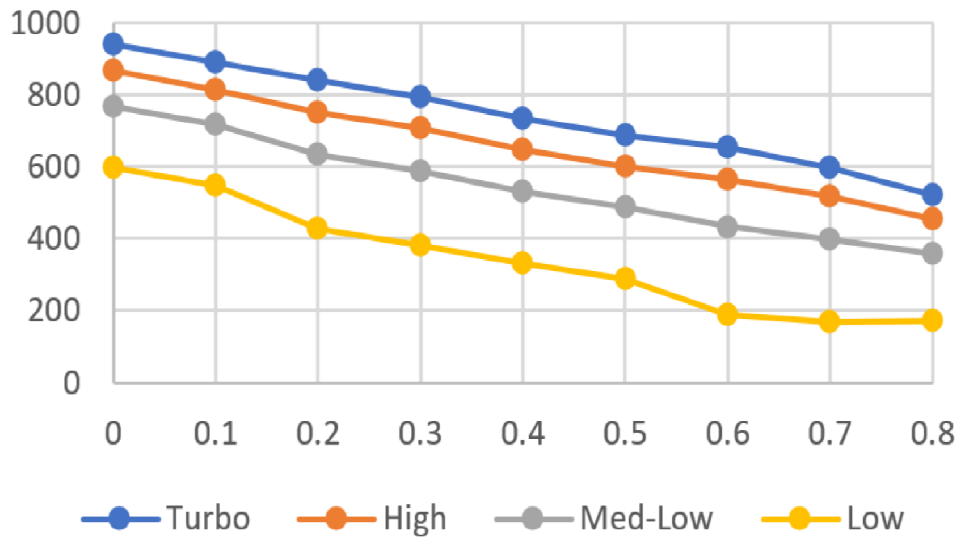
## Installation Instruction For Outdoor Unit



Meets all spatial requirements shown in Installation Clearance Requirements above.

## Fan Performance For Indoor Unit

24K



## Features

- High efficiency up to 16.8 SEER2, 12 EER2, 10.5 HSPF2
- Aluminum Coil
- IDU compatible with 115V and 230V
- Constantly Air Flow system up to 0.80 In.W.G
- Optional Auxiliary heat kit up to 10kW
- Easy Maintenance
- Multiple control options available:
  - Two way communication wired controller:AWC-4
  - Two way communication wired controller with built-in WiFi:AWC-8P-LC-WIFI
  - Wireless remote controller
  - Third-Party 24V Thermostat
- Adaptive Control wiring method on 24V and RS485
- Downward or Backward (optional) air inlet
- Chassis heater and crankcase heater equipped as standard