

Air Handler Heat Pump System

Location:	Approval:
Engineer:	Date:
Submitted to:	Construction:
Submitted by:	Unit #:
Reference:	Drawing #:


INDOOR SPECIFICATION

ESP(in.W.G)	0-0.8
Indoor Air Flow (Turbo/H/M/L/Si) (CFM)	600 / 565 / 530 / 489 / /
Indoor Noise Level (Turbo/H/M/L/Si) (dBA)	//55.5/52.5/50.5//
Dimension (WxDxH)	inch 43.23 x 23.33 x 10.93
	mm 1,098x592.7x277.6
Package (WxDxH)	inch 47.24400 x 680 x 13.58265
	mm 1200x680x345
Net/Gross Weight	lbs 54/58
	kg 53.5/58

OUTDOOR SPECIFICATION

Compressor Type	ROTARY
Compressor Model	KSN140D58UFZ
Refrigerant	R454B
Refrigerant Oil Charge(mL)	440
Refrigerant Oil	VG74
Outdoor Air Flow (Max) (CFM)	1,451
Outdoor Noise Level (dBA)	56
Dimension (WxDxH)	inch 31.69 x 12.99 x 21.81
	mm 805x330x554
Package (WxDxH)	inch 36.02355 x 14.56690 x 24.21255
	mm 915x370x615
Net/Gross Weight	lbs 77.16/83.77
	kg 35/38

EFFICIENCY

Cooling		Heating	
SEER2	16.8	HSPF2-4	8.8
EER2	11.5	COP	3.5

PERFORMANCE of Cooling

Cooling (Btu/hr)	
Rated Capacity	18,000
Min/Max Capacity	6,000~20,000
Moisture Removal(L/h)	1.46
Standard Operating Range(°F/°C)	-13~122/-13~75(-25~50)
Rated Cooling Conditions:	Indoor: 80°F DB/67°F WB Outdoor: 95°F DB/75°F WB

PERFORMANCE of Heating

Heating (Btu/hr)	
1. @ 47°F Rated	18,000
1. @ 47°F Min/Max Capacity	5,500~19,600
2. @ 17°F Rated	11,800
3. @ 5°F Rated: Capacity / COP	11,400/1.8
3. @ 5°F Max: Capacity	11,400
Standard Operating Range(°F/°C)	-13~75(-25~24)
1. Rated Heating Conditions:	Indoor: 70°F DB/60°F WB Outdoor: 47°F DB/43°F WB
2. Rated Heating Conditions:	Indoor: 70°F DB/60°F WB Outdoor: 17°F DB/15°F WB
3. Heating Conditions, Compressor Operating at Max. Frequency	Indoor: 70°F DB/60°F WB Outdoor: 5°F DB/5°F WB

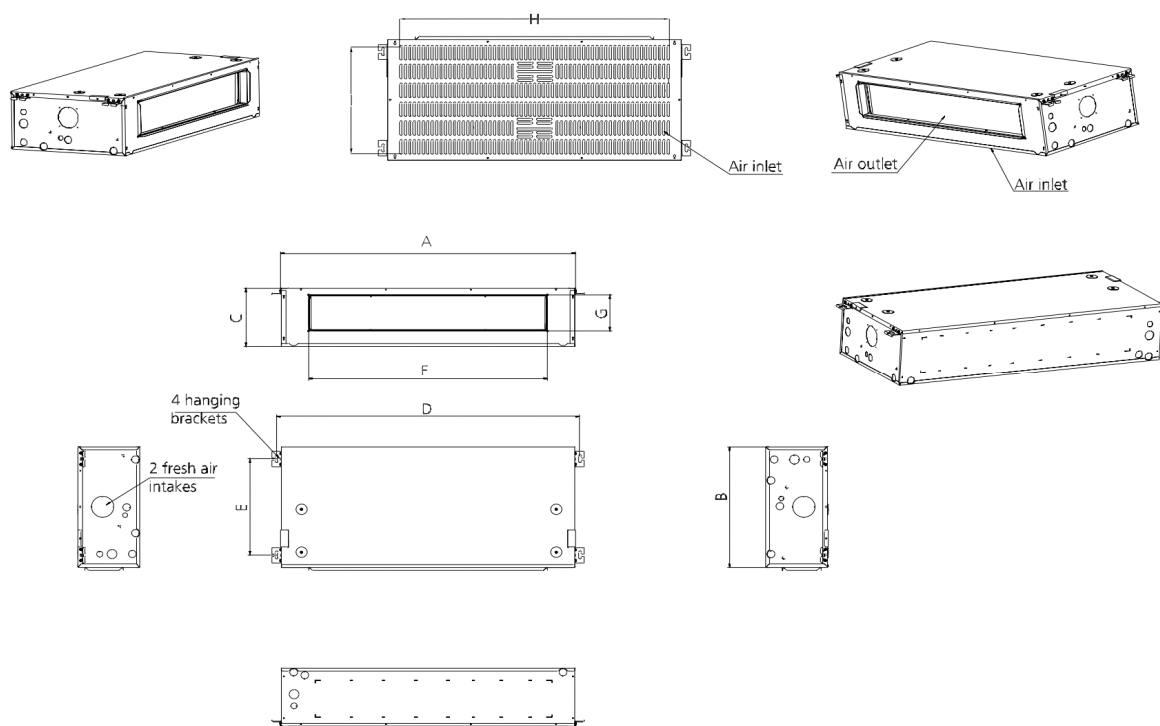
ELECTRICAL

Indoor Power Supply	115/208/230,60Hz,1Ph
Indoor MCA 115V/(208/230V)	115V:6;208/230V:5
Indoor MOP	15
Outdoor Power Supply	115/208/230,60Hz,1Ph
Outdoor MCA	16
Outdoor MOP	20
Communication Wiring	AWG 20/2
Compressor RLA	10
Outdoor Fan Motor RLA	0.8
Outdoor Fan Motor W	34
Indoor Fan Motor RLA	115V:4;208/230V:3.5
Indoor Fan Motor W	250
System Power Input @ Cooling (W)	1,565(600 ~ 1,900)
System Power Input @ Heating (W)	1,512(390 ~ 1,700)
MCA: Min. circuit amps (A)	MOCB: Max. over current protection (A)
RLA: Rated load amps (A)	W: Fan motor rated output (W)

PIPING

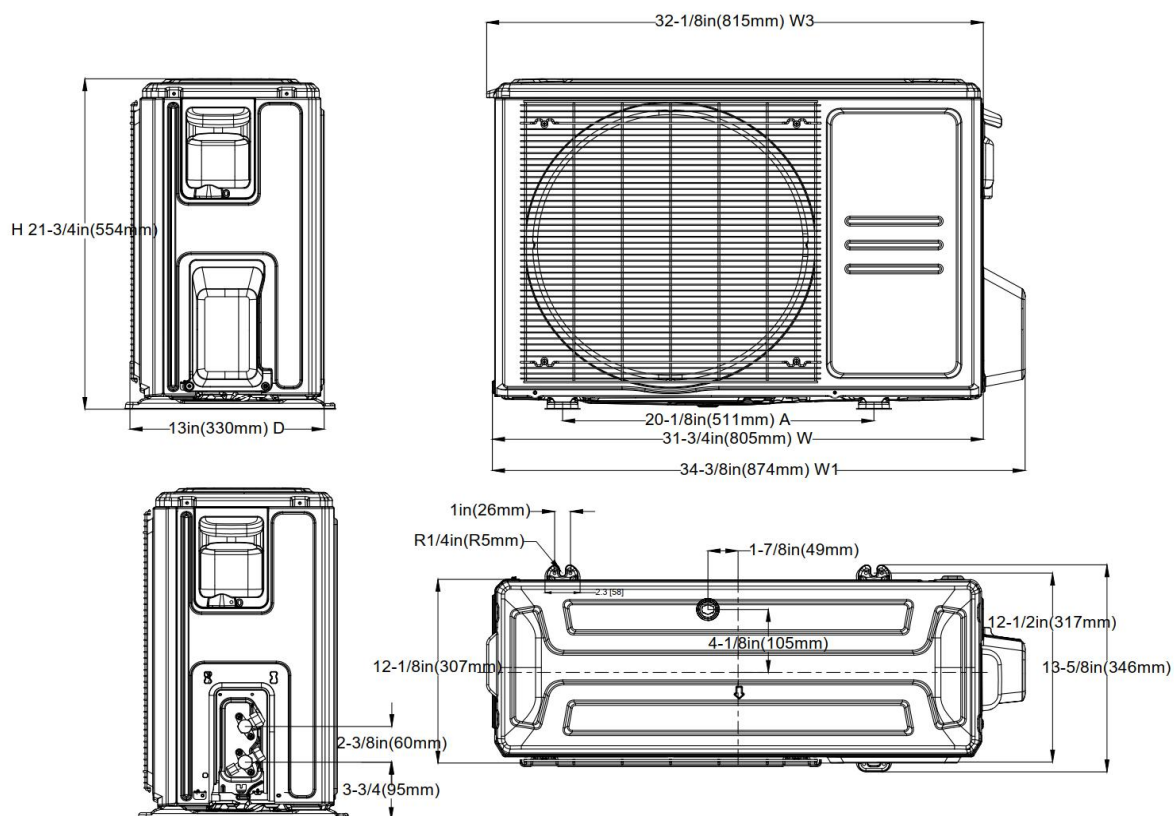
Throttle type(Indoor)	EXV
Throttle type(Outdoor)	EXV
Liquid Size	9.52mm(3/8in)
Gas Size	19mm(3/4in)
Max. Piping Length(ft/m)	98(30)
Max. Height Difference(ft/m)	66(20)
Max. Pre-charged Length(ft/m)	24.6(7.5)
Refrigerant Pre-charged Amount(oz/kg)	51.15(1.45)
Additional Charge of Refrigerant((oz/ft)/(g/m))	0.7(65)
Connection Method	Flared

Indoor Unit Dimension

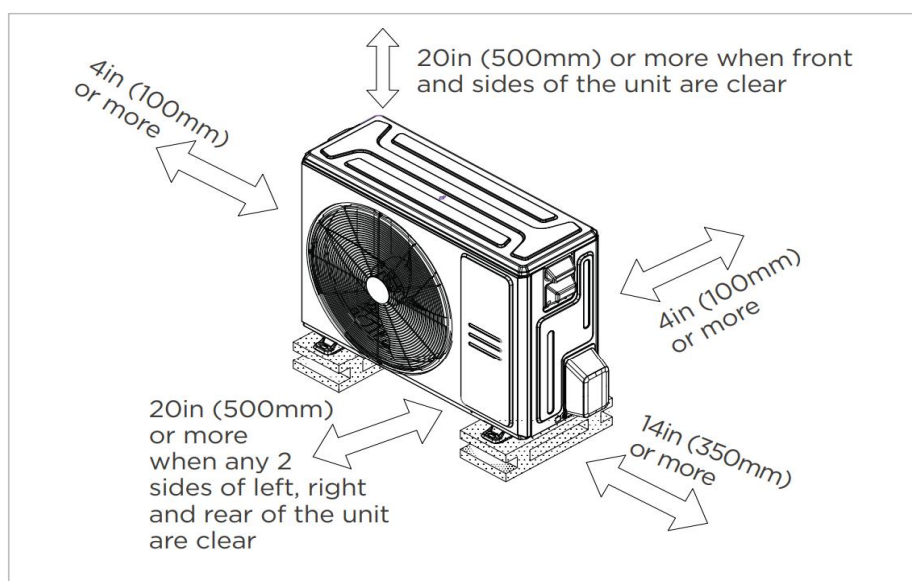


Dimensions			Model	18k	24k	30k/	36k
				inch(mm)	inch(mm)	inch(mm)	inch(mm)
Outline Dimension	A	Model Model		39-15/16 (1015)	45-7/8 (1165)	51-15/16 (1320)	58-7/8 (1495)
	B	Model Width		23-5/16 (593)	23-5/16 (593)	23-5/16 (593)	23-5/16 (593)
	C	Model Height		10-15/16 (278)	10-15/16 (278)	10-15/16 (278)	10-15/16 (278)
Size Of Mounted Lug	D	Mounted Lug Length		41-5/8 (1057)	47-1/2 (1207)	53-5/8 (1362)	60-1/2 (1537)
	E	Mounted Lug Width		18-1/8 (460)	18-1/8 (460)	18-1/8 (460)	18-1/8 (460)
Air Outlet Opening Size	F	Air Outlet Length		30-5/16 (769)	36-3/16 (919)	42-5/16 (1074)	49-3/16 (1249)
	G	Air Outlet Width		6-7/8 (174)	6-7/8 (174)	6-7/8 (174)	6-7/8 (174)
Air Return Opening Size	H	Air Return Length		38-3/8 (975)	44-5/16 (1125)	50-3/8 (1280)	57-1/4 (1455)
	I	Air Return Width		21-1/8 (536)	21-1/8 (536)	21-1/8 (536)	21-1/8 (536)

Outdoor Unit Dimension



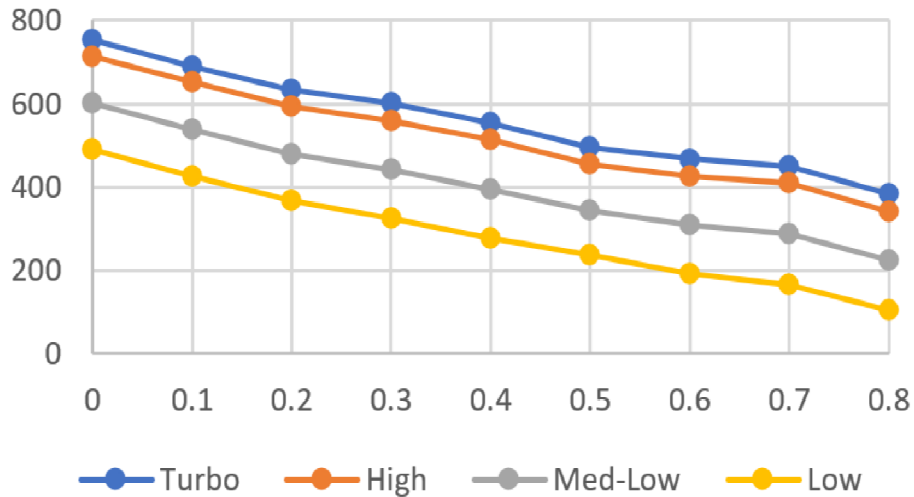
Installation Instruction For Outdoor Unit



Meets all spatial requirements shown in Installation Clearance Requirements above.

Fan Performance For Indoor Unit

18K



Features

- High efficiency up to 16.8 SEER2, 11.5 EER2, 8.8 HSPF2
- Aluminum Coil
- IDU compatible with 115V and 230V
- Constantly Air Flow system up to 0.80 In.W.G
- Optional Auxiliary heat kit up to 10kW
- Easy Maintenance
- Multiple control options available:
 - Two way communication wired controller:AWC-4
 - Two way communication wired controller with built-in WiFi:AWC-8P-LC-WIFI
 - Wireless remote controller
 - Third-Party 24V Thermostat
- Adaptive Control wiring method on 24V and RS485
- Downward or Backward (optional) air inlet
- Chassis heater and crankcase heater equipped as standard