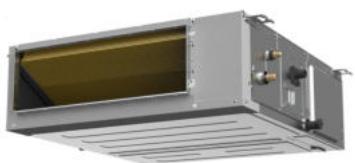


## Slim Duct Heat Pump System

Location:	Approval:
Engineer:	Date:
Submitted to:	Construction:
Submitted by:	Unit #:
Reference:	Drawing #:



## INDOOR SPEINDOOR SPECIFICATIONCIFICATION

Indoor Air Flow (Turbo/H/M/L/Si) (CFM)	419.1 / 350.2 / 256.0 / 216.0 / 135.4
Indoor Noise Level (Turbo/H/M/L/Si) (dBA)	N/A/32.5/30.5/28.5/26
Indoor static pressure range(in.w.g.)	0-0.8
Dimension (W×D×H)	inch 27.56 x 29.53 x 9.65 mm 700.0×750.0×245.0
Package (W×D×H)	inch 36.42 x 33.46 x 11.73 mm 925×850×298
Net/Gross Weight	lbs 64.15/73.85 kg 29.1/33.5

## ELECTRICAL

Power Supply	208/230V,60Hz,1Ph
System MCA	15.00
Connection Wiring	14#x4
System MOCP	15
Indoor Fan Motor RLA	1.5
Indoor Fan Motor W	165.0
System Power Input @ Cooling (W)	1000(150 ~ 1260)
System Power Input @ Heating (W)	970(260 ~ 1420)
MCA: Min. circuit amps (A)	MOCP: Max. over current protection (A)
RLA: Rated load amps (A)	W: Fan motor rated output (W)

## EFFICIENCY

Cooling		Heating	
SEER2	20	HSPF2-4	10.6
EER2	12.0	COP	3.63

## PERFORMANCE of Cooling

Cooling (Btu/hr)	
Rated Capacity	12000
Min/Max Capacity	3000~13300
Moisture Removal(L/h)	1.39
Standard Operating Range(°F/°C)	-22~122(-30~50)
Conditions:	Indoor: 80°F DB/67°F WB Outdoor: 95°F DB/75°F WB

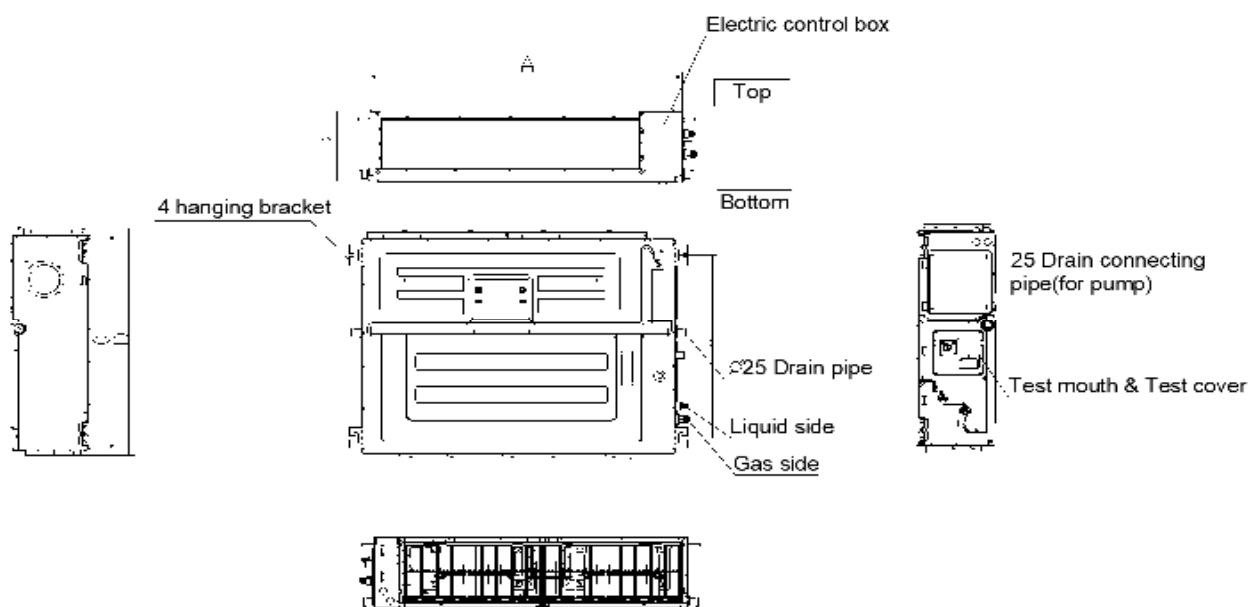
## PERFORMANCE of Heating

Heating (Btu/hr)	
1. @ 47°F Rated	12000
1. @ 47°F Min/Max Capacity	3900~16500
2. @ 17°F Rated	10200
3. @ 5°F Rated: Capacity / COP	12000/1.95
3. @ 5°F Max: Capacity	12000
Standard Operating Range(°F/°C)	-22~75(-30~24)
1. Conditions:	Indoor: 70°F DB/60°F WB Outdoor: 47°F DB/43°F WB
2. Conditions:	Indoor: 70°F DB/60°F WB Outdoor: 17°F DB/15°F WB
3. Conditions:	Indoor: 70°F DB/60°F WB Outdoor: 5°F DB/5°F WB

## PIPING

Throttle type(Indoor)	N/A
Liquid Size	6.35mm(1/4in)
Gas Size	9.52mm(3/8in)
Max. Piping Length(ft/m)	82.00(25)
Max. Height Difference(ft/m)	49.20(15)
Max. Pre-charged Length(ft/m)	24.6(7.5)
Refrigerant Pre-charged Amount(oz/kg)	35.27(1.00)
Additional Charge of Refrigerant((oz/ft)/(g/m))	0.16(15)
Connection Method	Flared

## Indoor Unit Dimension



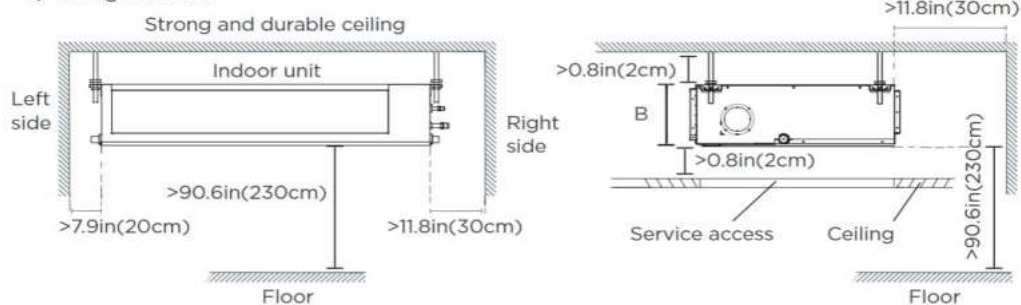
Model	A	B	C	D
9K	27 1/2" (700mm)	7 7/8" (200mm)	7 3/4" (195mm)	23in (584mm)
12K	27 1/2" (700mm)	9 5/8" (245mm)	29 1/2" (750mm)	31 1/4" (795mm)
18K~24K	39 5/8" (1000mm)	9 5/8" (245mm)	29 1/2" (750mm)	31 1/4" (795mm)
36K~48K	47 7/8" (1200mm)	11 7/8" (300mm)	29 1/2" (750mm)	31 1/4" (795mm)
60K	55 1/8" (1400mm)	13in (330mm)	31 1/2" (800mm)	33 1/4" (845mm)

## Installation Instruction

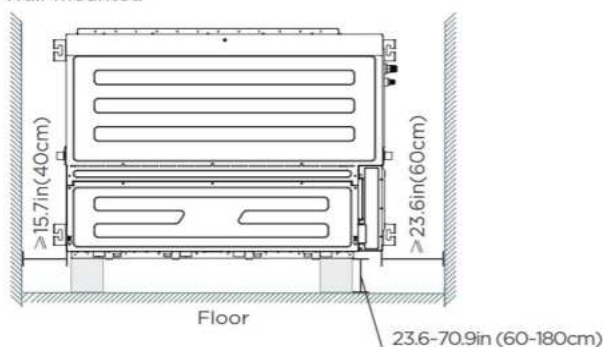
### Installation place

The distance between the mounted indoor unit should meet the specifications illustrated in the following diagram.

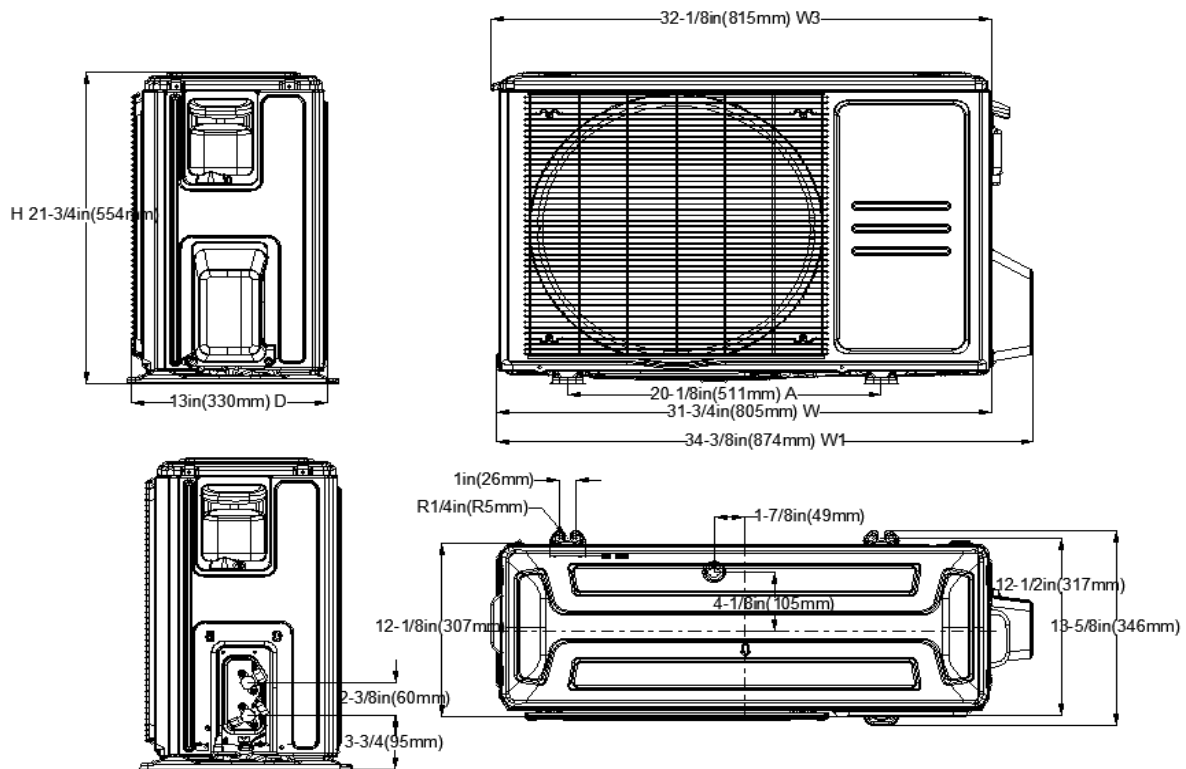
#### 1) Ceiling-mounted



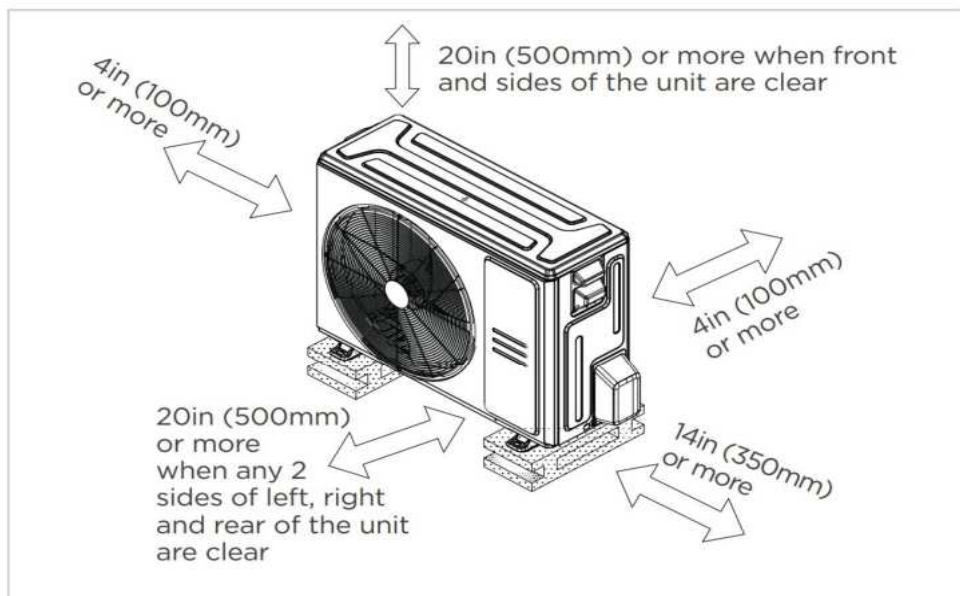
#### 2) Wall-mounted



## Outdoor Unit Dimension

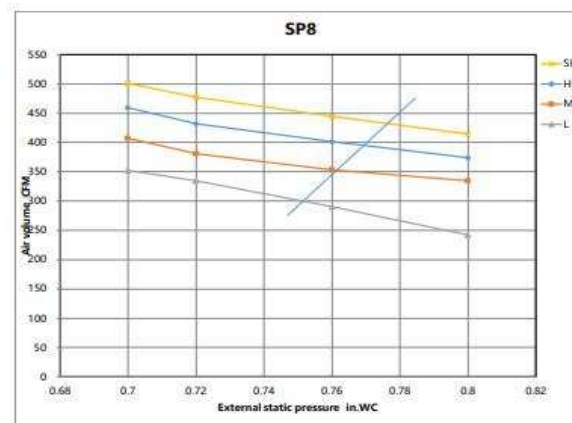
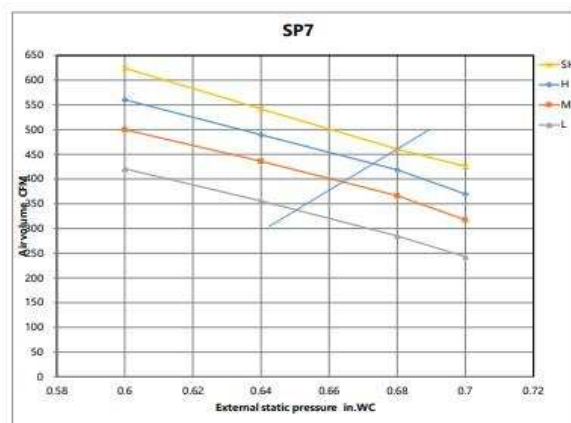
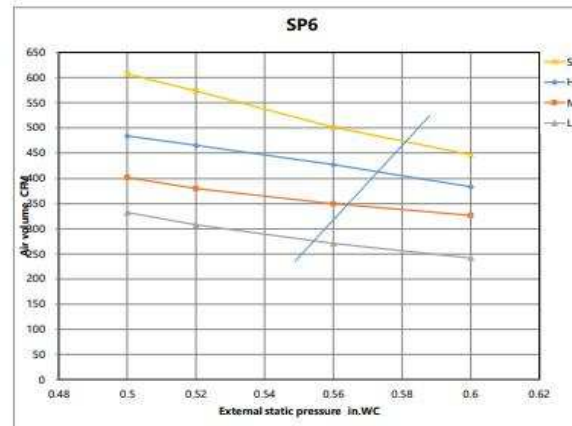
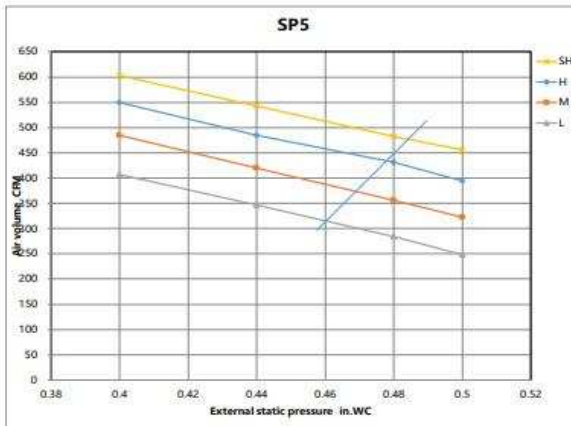
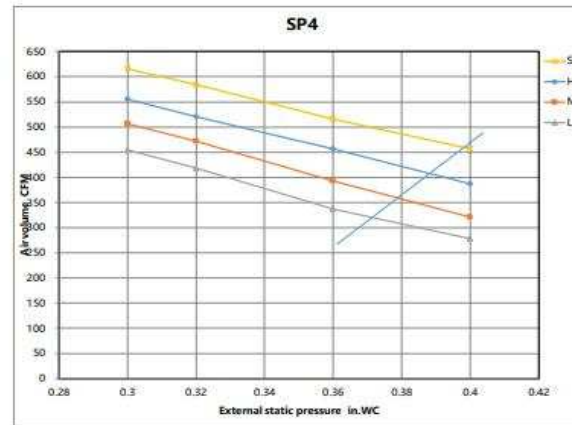
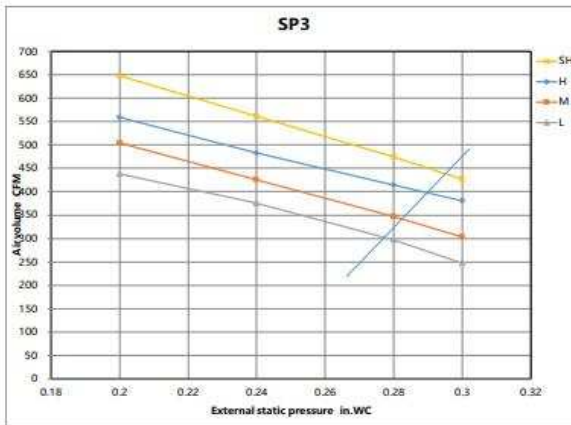
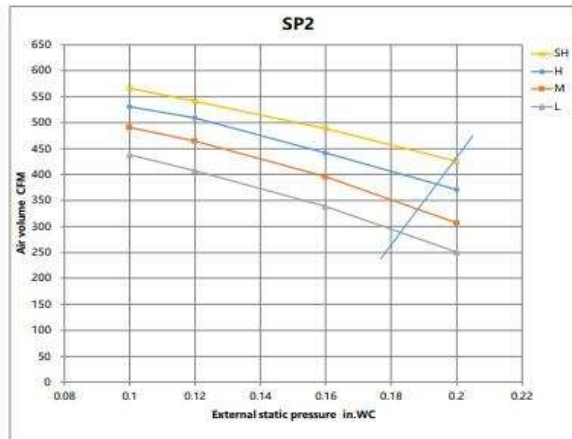
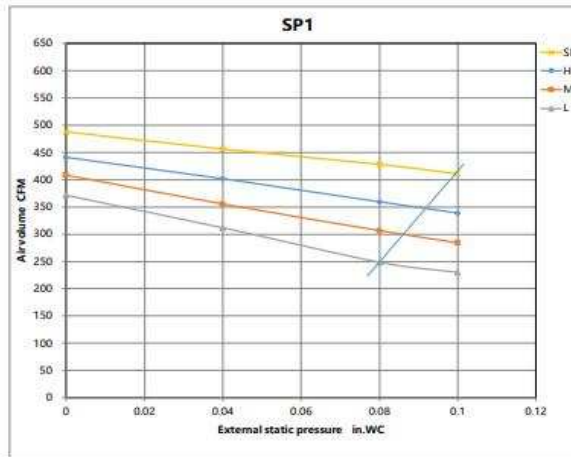


## Installation Instruction

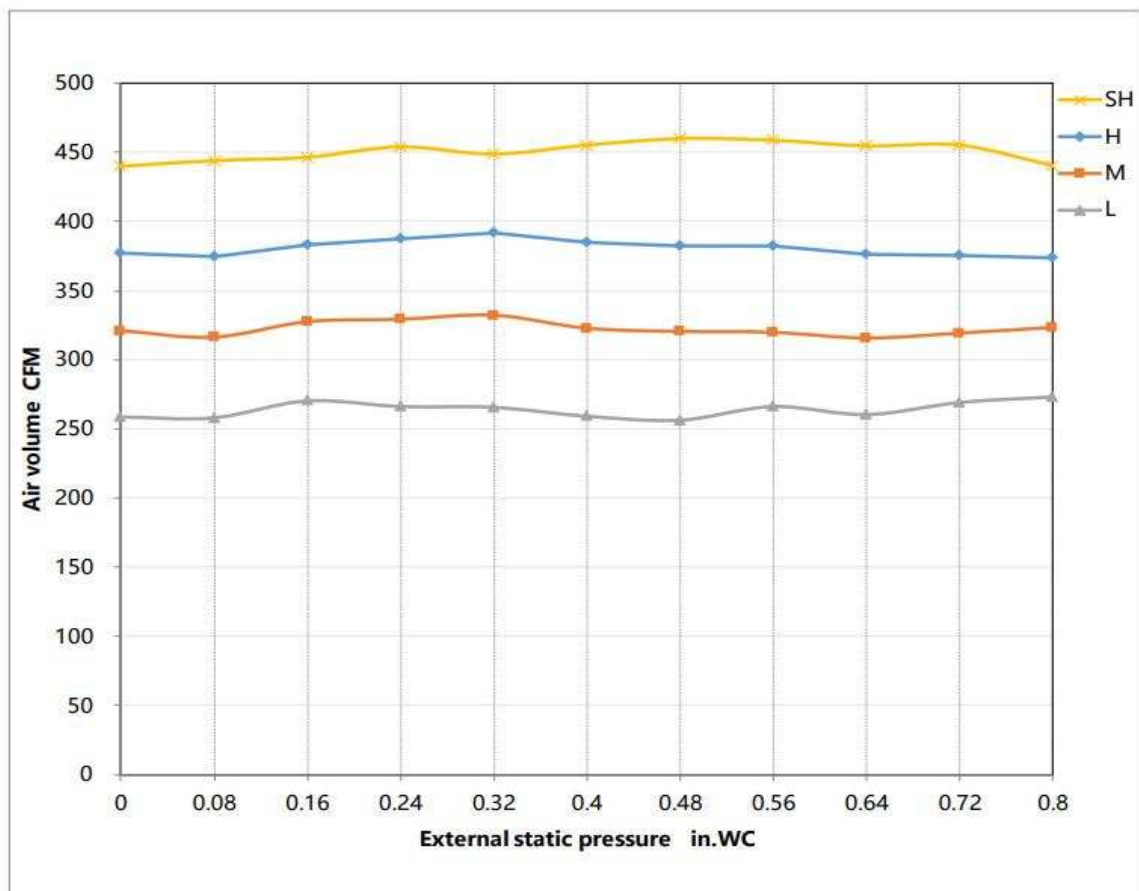


Meets all spatial requirements shown in Installation Clearance Requirements above.

## Fan performance



### Constant air volume



### FEATURES

- Compatible with both horizontal and vertical installation
- Static pressure up to 0.8 in.w.g(for all models)
- Static pressure setting stages: 8
- Refrigerant leakage detection sensor
- Constant airflow
- Built-in pump
- i-clean
- Fan speed stages: 1~100%
- WiFi capability: through wired controller with built-in WiFi
- OTA(by using wired controller AWC-8P-LC-WIFI)
- 2-pin connector(HA/HB) for programmable wired controller
- Multiple control options available:
  - Two way communication wired controller with built-in WiFi:AWC-8P-LC-WIFI
  - Infrared wired controller: AWC-4
  - Wireless remote controller
  - Third-Party 24V Thermostat

\*24V interface is required.