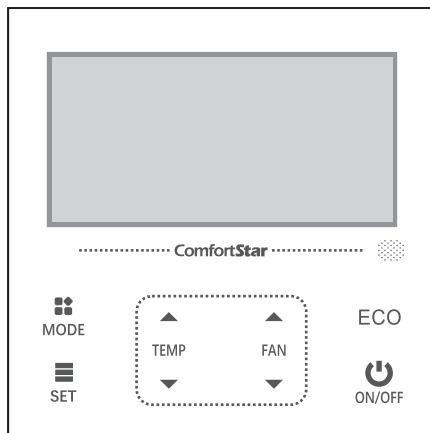


# WIRED CONTROL OPERATION MANUAL



CW32-WIFI

Thank you for purchasing this product.

This manual describes safety precautions required for the use of the product.

**Read this manual carefully and be sure you understand the information before using the product.**

Keep this manual where it is readily accessible after reading it through.

If another user operates the product in the future, be sure to hand over this manual to the new user.

Refer to the operation manuals attached to the indoor and outdoor units, etc.

# CONTENTS

---

I Using the Wire Controller .....	01
II WiFi Connection Guide .....	07
III Installation of Wire Controller .....	12

# I. Using the Wire Control

The wire control motherboard is responsible for controlling the operating status of the system through buttons, display the working status of the entire system through its LCD screen, responsible for communicating with the system control main control board.

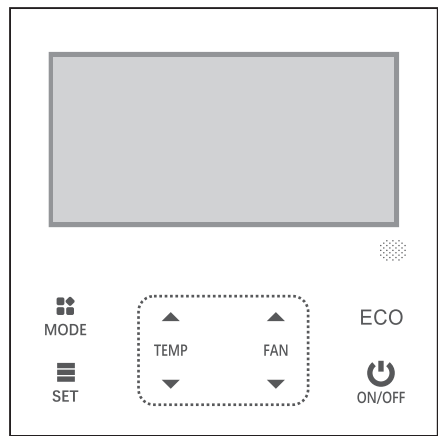


Figure1 The appearance of the wire controller

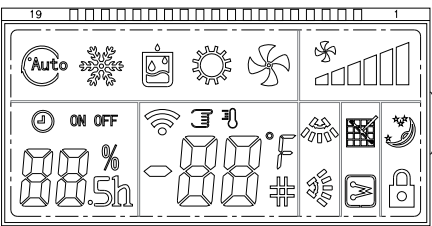
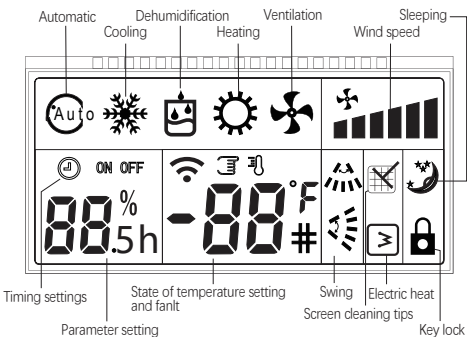


Figure2 LCD display by wire controller

## Operation and Instruction:

### 1. " " On/Off button:



On/Off button: control the switch status of the system.

### 2. " " Mode button:

In the startup state, each time you press the mode key, the mode changes in the following order:

Switch between automatic mode → cooling mode → dehumidification mode → heating mode → ventilation mode → automatic mode



### 3. Temperature button and :

1) Press the temperature "" or "" button when the machine is turned on, increase/decrease the set temperature; the temperature setting range is: 16 °C ~ 32 °C.

2) Press the temperature "" and "" buttons simultaneously, the lock button can be locked, and the LCD will display a lock icon. To deactivate the button, press the temperature "" and "" buttons simultaneously again to unlock it.

### 4. Air flow button and :


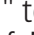

1) In dehumidification mode, the air flow is fixed and 2 gears are not adjustable.

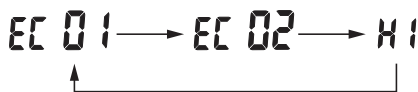
2) Adjust the air flow, each time you press the "" or "" button, the air flow will change as shown below:

6th gear → 4th → 2nd → Auto wind (three-speed indoor unit)



### 5. " ECO " Eco saving mode:

1) Press " ECO " for 3 secs, the current ECO mode is flashing (Default  ). Press "" or "" to select mode, as shown below, the display is switched in the order of. No operation for 3 secs to save it automatically.



EC 01	Economy Mode
EC 02	Night Mode
H1	High power Mode

2) Press "ECO" to display the current ECO mode, and no operation for 3 secs to return to the home page.

## 6. "≡" SET button:

At any time, press this button to enter the set setting interface. In the set setting interface, press this button once to enter different function setting states, the icon corresponding to the item to be set will enter a flashing state. After the setting is completed, press "⏻" button to confirm the setting and exit the set setting interface, or do not operate within 10 secs of the setting interface to enter the current setting state.

1) Press "≡" to enter setting, when the machine displays the filter cleaning reminder "☒", the middle position of the display screen will display the setting parameters: 0- Cancel reminder, 1- Do not cancel reminder; press the temperature "▲" or "▼" buttons to adjust the cancellation or non cancellation reminder function; if there is no "☒", it means that the scheduled cleaning reminder time has not arrived, otherwise it will skip to the next function setting.

2) Press "≡" again, and the button lock icon "🔒" flashes, the middle position of the display screen will display the setting parameters: 0-Off, 1-On; press the temperature "▲" or "▼" buttons to adjust the on or off (only effective after exiting the function setting interface).

3) Press "≡" again, and enter the time setting for timed startup, the

"ON" icon for the timed on setting flashes, and the current status is displayed in the lower left corner of the display screen; "--" indicates the timing startup time. Press the temperature "▲" "▼" buttons to adjust the timing startup time. The unit is 0.5h; "\* \* h" indicates that the device will be turned on after \* \* hours, and the user will choose the desired function according to the previous instructions (if there is no selection, it will default to the state before the last shutdown).

4) Press "☰" again and enter the time setting for timed shutdown, the "OFF" icon for timing off setting flashes, and the current status is displayed in the lower left corner of the display screen; "--" indicates that there is no timing shutdown time. Press the "▲" or "▼" button to adjust the timing shutdown time, and the unit is 0.5h; "\* \* h" means to shut down after setting \* \* hours.

5) Press "☰" again, and the middle position of the display screen will display "--", at this point, the function settings enter the entrance. Long press the "⛶" button to enter the user parameter setting interface; in the user parameter interface, the number of the setting item is displayed on the left side of the display screen, and the number in the middle of the display screen shows the value of the parameter that can be set.

**As shown in the following table:** in the user parameter setting interface, press the wind speed "▲" and "▼" buttons or function buttons to select the serial number of the setting item; Press the temperature "▲" and "▼" buttons to adjust the parameter values.

Items	Parameter	Instructions	Remarks
1	Fahrenheit/centigrade setting	Default °C, °C to F to °C	Display setting temperature
2	Max temperature setting	Default 32°C.24°C-32°C can be adjusted Default 88F, adjustable range 76F-88F	Display setting value
3	Min temperature setting	Default 16°C.16°C-24°C can be adjusted Default 61F. 61F-76F can be adjusted	Display setting value
4	Main interface temperature display	Display setting temperature (default/display indoor	Display setting temp/display indoor side temperature
5	Select prompttone of press butlon	0:voiced(default)/1:silent	Display 0/1
6	Clean time setting	0h/2000h/3000h/4000h/5000h (default 0h)	Display 00/20/30/40/50
7	Wire controller master /slave setting	0: master(default)/1: Slave	It can be set when two wire controller connected otherwise can't communication
8	Address setting	0~63	

#### Note:

●When set as a slave control, engineering parameter settings cannot be performed.

●Instructions for setting VRF online addresses: by using the wind speed+ button "▲" and the wind speed - button "▼"; Press the button to adjust, then press the "ON/OFF" button to save and exit.

## 7.Description of the code removal switch

	2 ON	2 OFF		ON	OFF
3 ON	-4°C	-2°C	1	reserved	reserved
3 OFF	2°C	0°C	4	with power-off memory	without power-off memory

- 1) The 2nd and 3rd digits of the pull-out switch can select the compensation value of the room temperature, when both the 2nd and 3rd bits are ON, the compensation value is -4 degrees, when the 2nd and 3rd bits are both OFF, the compensation value is 0 degrees. When the 2nd bit is ON and the 3rd bit is OFF, the compensation value is 2 degrees, when the 2nd digit is OFF and the 3rd digit is ON, the compensation value is -2 degrees. (Only for the ambient temperature sensor on the remote controller.)
- 2) The 4th position of the unplug switch ON indicates that there is a power outage memory function, while OFF indicates that there is no power outage memory function.



## II. WiFi Connection Guide

### 1. Download Tuya Smart App

Search for the “ Smart Life ” App in the mobile app store / App Store /Google play, or scan the QR code to download.





Figure 3

### 2. Log in/register

Log in/register after the software is installed.

### 3. Add Device

- 1) After the wired controller is powered on, press and hold “  ” for 3 seconds, and the “  ” will flash, as shown in Figure 4.
- 2) At this time, click the “ + ” in the upper right corner of the APP or click the “ Add Device ” button in the middle (Figure 5) to search for “ Star Pro Wi-Fi Thermostat ”.

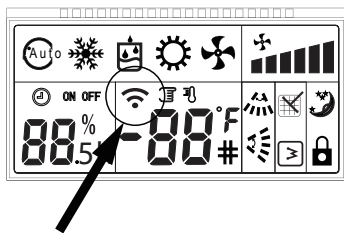


Figure4 The WiFi icon flashes

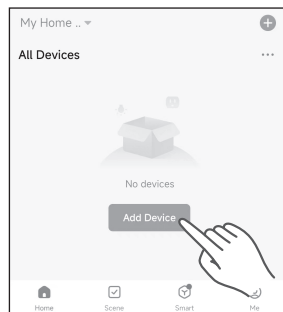


Figure5 Add Device

#### 4. Connected to the network

- 1) Input WiFi password correctly, make sure the router and device are close to your phone, please don't disconnect from the internet during connection process.
- 2) After the connection is successful, click the “ Star Pro Wi-Fi Thermostat ” icon to control the air conditioner with the mobile APP.

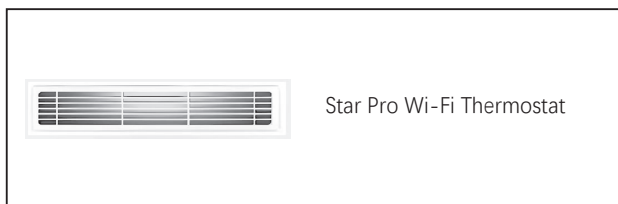


Figure6 "Star Pro Wi-Fi Thermostat" icon in APP

# 5. Control device with APP

- 1) Click the “ Switch ” button in the lower left corner to turn on the air conditioner, as shown in Figure 7.
- 2) Click “ - ” or “ + ” in the middle of the screen to adjust the temperature of the air conditioner, as shown in Figure 7.
- 3) Click “ Mode ” to select the mode of the air conditioner, as shown in Figure 8.
- 4) Click “ Fan Speed ” to adjust the fan speed of the air conditioner, as shown in Figure 9.

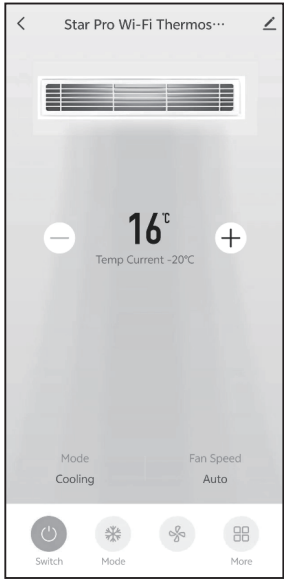


Figure7 Main interface

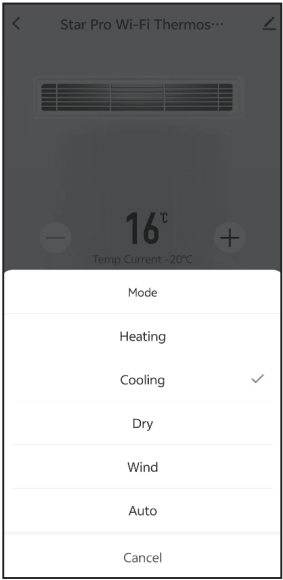


Figure8 Mode

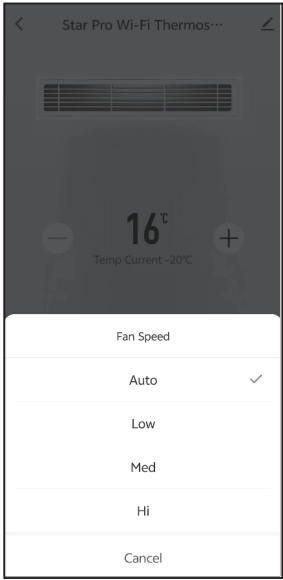


Figure9 Fan speed

## 6. More

Click "More" in the lower right corner of the main interface, as shown in Figure 7:

- 1) Countdown: Drag the countdown dot to select the shutdown time, as shown in Figure 10.
- 2) Timer function: Click timer on the interface of Figure 10, add timer (Figure 11), and scroll up and down to adjust the time of power on/off (Figure 12), select scheduled Power On/Scheduled Power off in "Switch", and set the days of the week to repeat this timer in "Repeat".(Figure 13).
- 3) Child lock: Open the "child lock" and lock the settings to prevent children from being naughty/misoperated, as shown in Figure 10.
- 4) Eco: Select Eco saving mode, see Page2 for details.

### Note:

- 1) If the timer is set during the air conditioner is turned off, when it is powered on, the air conditioner will run the mode, temperature and fan speeds set on the mobile APP.
- 2) There will be a difference of about 30 sec between the timer and the actual time.

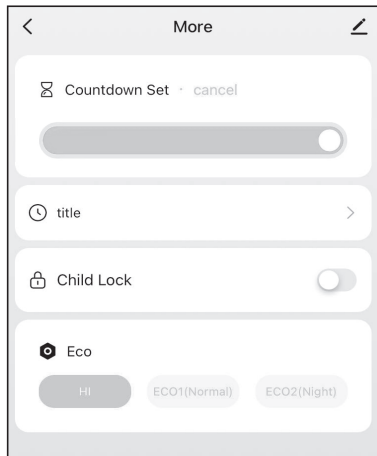


Figure10 More

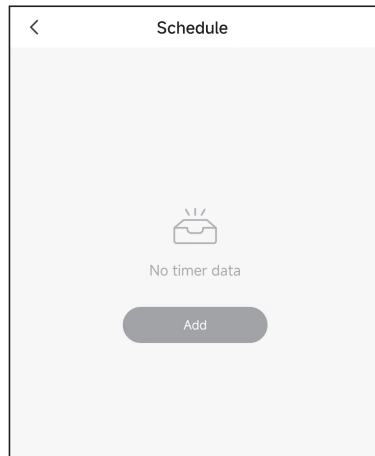


Figure11 Schedule

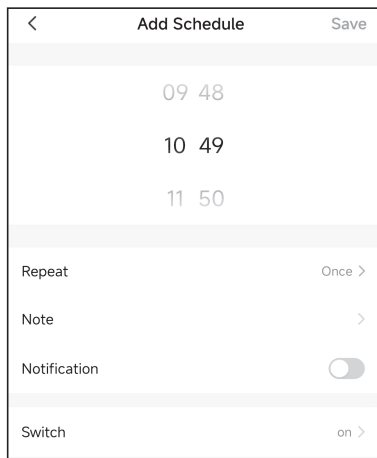


Figure12 Adjust time

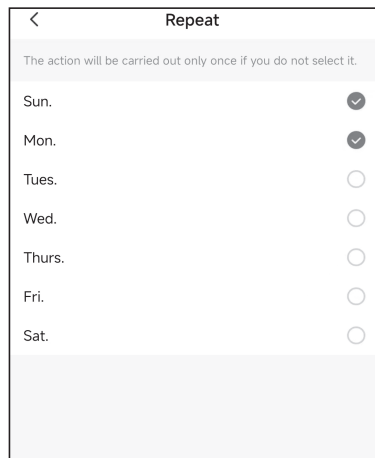


Figure13 Repeat every week

### III. Installation of Wire Controller

#### **Warning: Safety Precautions**

**! Read the safety precautions carefully before installation! The following is the important content to be paid for the safety, be sure to follow it.**

**! Please do not install the wire controller in damp or direct sunlight places.**

**! Please do not hit, throw and frequent disassemble the wire controller.**

**! Please do not operate the wire controller with wet hand; do not make any fluid into the wire controller.**

**! Please do not do dismantle the wire controller without authorization. Please consult after-sales maintenance personnel if you have problems.**

**! To prevent water and dust into the wire controller, affect the wire controller normal use. Please dismantle the wire controller when the indoor decoration and maintenance.**

#### **Installation and disassembly of the wire controller**

##### **1、The installation position and requirements of the wire controller**

- 1) Please do not install the wire controller in damp or direct sunlight places.
- 2) Please do not install the wire controller in the places, where is near the high temperature or easy to splash water.

3) To avoid the interference of the neighbors' remote controller which has the same model, then cause abnormal work. Please do not install the wire controller where the face up to the window.

4) Before installation, please cut off the power which is buried in the wall mounting holes. The whole installation process does not allow operation with power.

5) In order to avoid the unit by reason of electromagnetic interference caused by abnormal work. When wiring, please pay attention to the following matters.

① Ensure that communication line access right, otherwise will lead to communication failures.

② If the air conditioning unit is installed on the places , which is influence by electromagnetic interference. The wire controller signal lines must use shielded twisted-pair cable.

6) The standard accessories which is installation need to prepare: installed inside a wall socket bottom box, controller base plate, screw the M4×25, control panel.

## **2、The installation of the wire controller**

The wire controller signal line connection mode is as follows:

1) Open interior electrical lifted the lid, and the signal wires through the rubber ring;

2) Plug the wire controller signal lines within the five core needle base on the indoor machine circuit boards, and using cable tie line tied tightly fixed. Next, the wire controller installation steps as shown in the figure below:

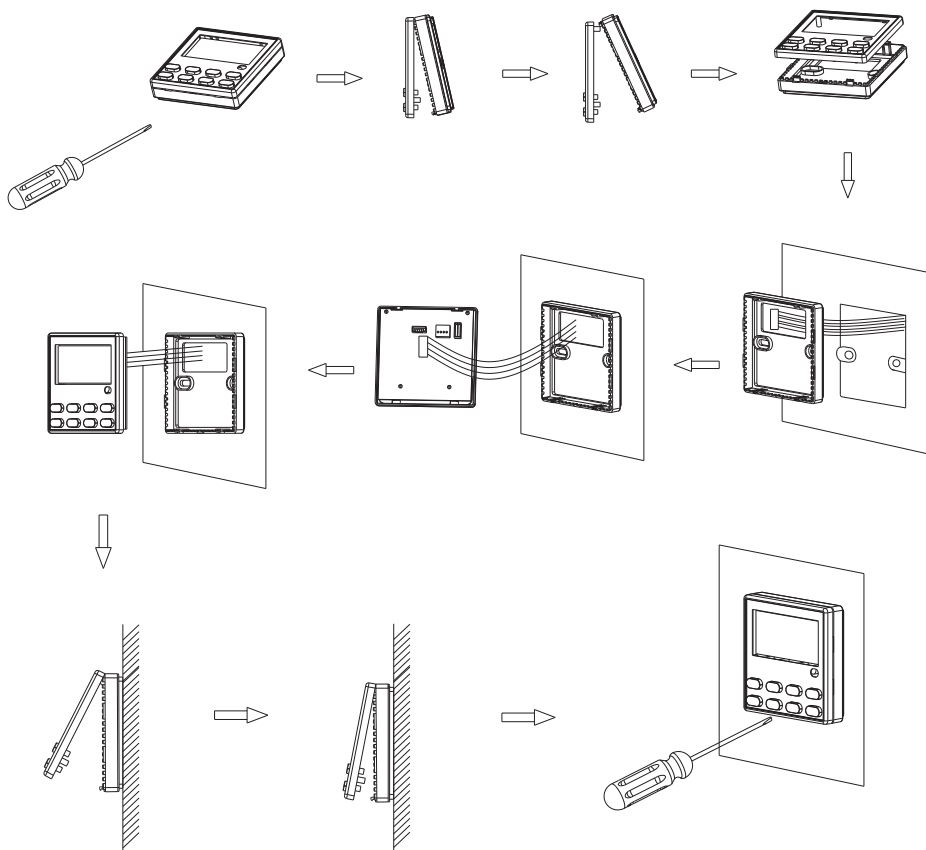


Figure 14



Connect the wire control in the way as shown in the figure below.

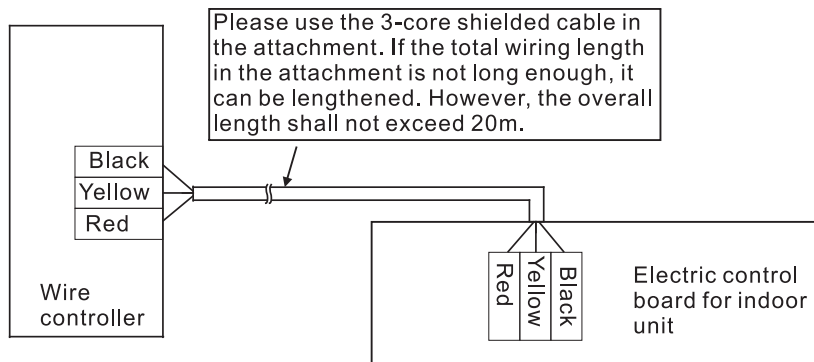


Figure 15

**Brief description of the installation process is as follows:**

- 1) The signal lines of short through rectangle hole of the wire controller bottom plate, and then pull out 3-core twisted pair from the wall installation hole. Finally connect the line and the other end.
- 2) Use screws M4 x 25 to fix the controller base plate on the mounting holes of the wall.
- 3) Put the wire controller panel and floor buttons together, and this installation is complete. Please reserve a certain length of the line at the bottom of box, to facilitate maintenance later removed.

### 3、Disassembly of the wire control

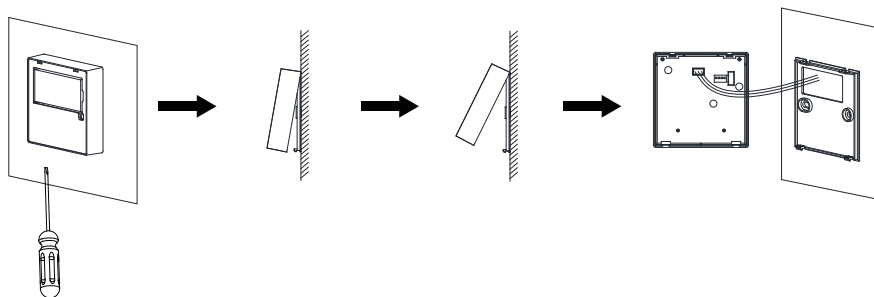


Figure 16

#### Note:

- After the completion of the installation, confirm there is no abnormality for the commissioning, and deliver the instruction to customers for storage.
- It may cause the rear cover deformed if the screw is tightened too much.
- It is necessary to reserve a certain length for the connecting cable of the wire controller during the installation, so as to take down the wire controller for the maintenance.