

# SUBMITTAL DATA SHEET

Series Name: Star Pro Series  
Model Number: BAH32-24-15 (307) / LUC32-24-15 (301)

Air Handler Heat Pump System			
Location:		Approval:	
Engineer:		Date:	
Submitted to:		Construction:	
Submitted by:		Unit #:	
Reference:		Drawing #:	



INDOOR SPECIFICATION			
Indoor Air Flow (High/Low) (CFM)			850/680
Indoor Noise Level (High/Low) (dBA)			42/38
Dimension (W×D×H)	inch		17-33/64×21-1/32×45
	mm		445×534×1143
Package (W×D×H)	inch		20-55/64×26-37/64×46-17/64
	mm		530×675×1175
Net/Gross Weight	lbs		115/128
	kg		52/58

OUTDOOR SPECIFICATION			
Compressor Type			ROTARY
Compressor Model			KTN210D60UMT3
Refrigerant			R32
Refrigerant Oil Charge(mL)			630
Refrigerant Oil			VG74
Outdoor Air Flow (Max) (CFM)			2100.0
Outdoor Noise Level (dBA)			58
Dimension (W×D×H)	inch		23-5/8×23-5/8×25
	mm		600×600×635
Package (W×D×H)	inch		25-63/64×25-63/64×26-3/16
	mm		660×660×665
Net/Gross Weight	lbs		114/120
	kg		51.5/54.5

EFFICIENCY			
Cooling		Heating	
SEER2	15.0	HSPF2-4	8.1
EER2	9.4	COP	3.20

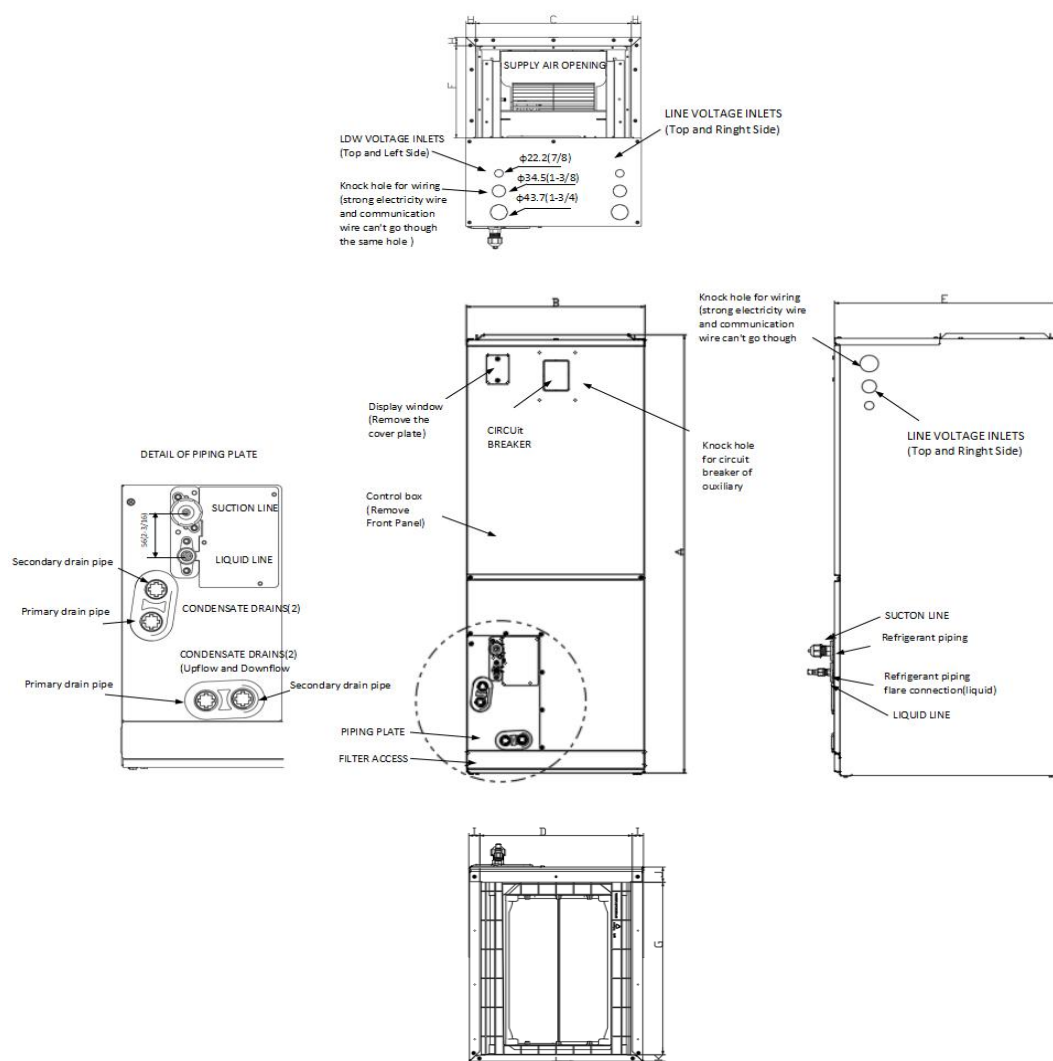
PERFORMANCE of Cooling	
Cooling (Btu/hr)	
Rated Capacity	23000
Min/Max Capacity	6800~25000
Moisture Removal(L/h)	1.93
Standard Operating Range(°F/°C)	5~131(-15~55)
Rated Cooling Conditions:	
Indoor: 80°F DB/67°F WB	
Outdoor: 95°F DB/75°F WB	

PERFORMANCE of Heating	
Heating (Btu/hr)	
1. @ 47°F Rated	26000
2. @ 47°F Min/Max Capacity	9000~28000
3. @ 17°F Rated	13000
4. @ 5°F Rated: Capacity / COP	18500/1.75
5. @ 5°F Max: Capacity	19000
Standard Operating Range(°F/°C)	-4~75(-20~24)
1. Rated Heating Conditions:	
Indoor: 70°F DB/60°F WB	
Outdoor: 47°F DB/43°F WB	
2. Rated Heating Conditions:	
Indoor: 70°F DB/60°F WB	
Outdoor: 17°F DB/15°F WB	
3. Heating Conditions, Compressor	
Indoor: 70°F DB/60°F WB	
Operating at Max. Frequency	
Outdoor: 5°F DB/5°F WB	

ELECTRICAL	
Indoor Power Supply	208/230V,60Hz,1Ph
Indoor MCA 115V/(208/230V)	2.3
Indoor MOP	3
Outdoor Power Supply	208/230V,60Hz,1Ph
Outdoor MCA	20
Outdoor MOP	25
Communication Wiring	AWG 25×3 Shielded
Compressor RLA	8.4
Outdoor Fan Motor RLA	2.3
Outdoor Fan Motor W	200
Indoor Fan Motor RLA	1.78
Indoor Fan Motor W	150
System Power Input @ Cooling (W)	2450(750~2700)
System Power Input @ Heating (W)	2250(660~2600)
MCA: Min. circuit amps (A)	MOCP: Max. over current protection (A)
RLA: Rated load amps (A)	W: Fan motor rated output (W)

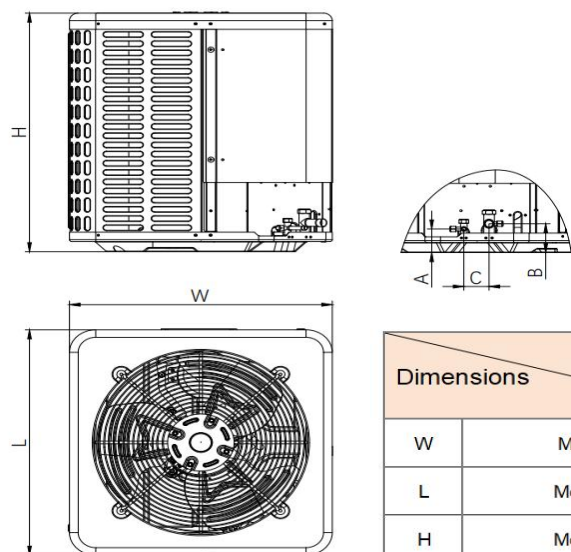
PIPING	
Throttle type(Indoor)	Piston
Throttle type(Outdoor)	Capillary
Liquid Size	9.52mm(3/8in)
Gas Size	19mm(3/4in)
Max. Piping Length(ft/m)	164(50)
Max. Height Difference(ft/m)	82(25)
Max. Pre-charged Length(ft/m)	24.6(7.5)
Refrigerant Pre-charged Amount(oz/kg)	75.84(2.15)
Additional Charge of Refrigerant((oz/ft)/(g/m))	0.52(48)
Connection Method	Flared

## Indoor Unit Dimension



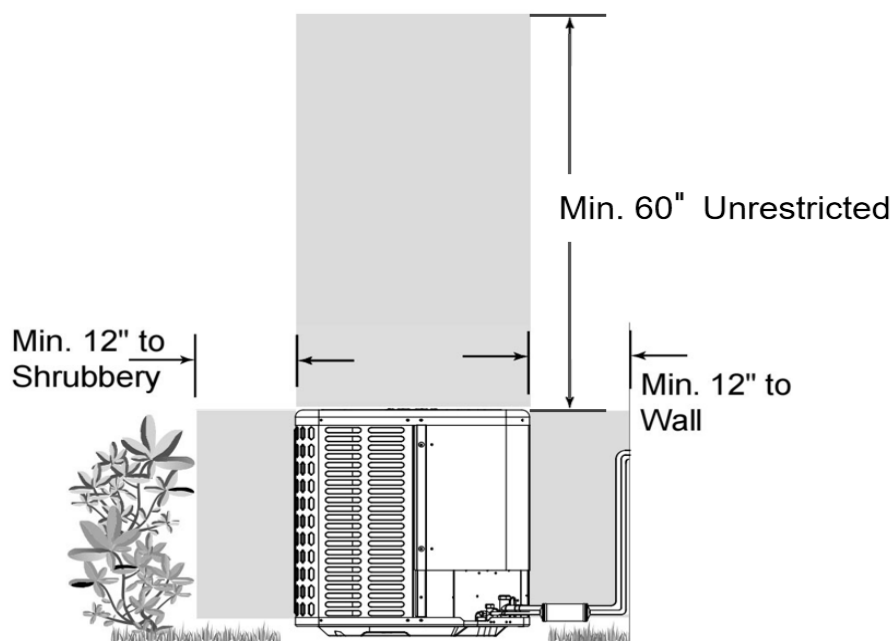
Dimensions		Model	18K/24K		30K/36K		48K/60K	
			inch	mm	inch	mm	inch	mm
A	Model Height		45-3/4	1162	49-49/64	1264	53-47/64	1365
B	Model width		17-41/64	448	21-9/64	537	24-39/64	625
C	Supply Air Opening width		15-5/8	397	19-9/64	486	22-19/32	574
D	Return Air Opening Width		15-25/64	391	18-47/64	476	22-23/64	568
E	Model Depth		21-7/64	536	21-7/64	536	21-7/64	536
F	Supply Air Opening Depth		10-9/32	261	10-9/32	261	10-9/32	261
G	Return Air Opening Depth		18-23/32	475.5	18-23/32	475.5	18-23/32	475.5
H	Supply Air Opening Clearance		15/16	24	15/16	24	15/16	24
I	Return Air Opening Side Clearance		1-1/8	28.5	1-1/8	28.5	1-1/8	28.5
J	Return Air Opening Front Clearance		1-21/32	42	1-21/32	42	1-21/32	42
K	Return Air Opening Back Clearance		45/64	18	45/64	18	45/64	18

## Outdoor Unit Dimension

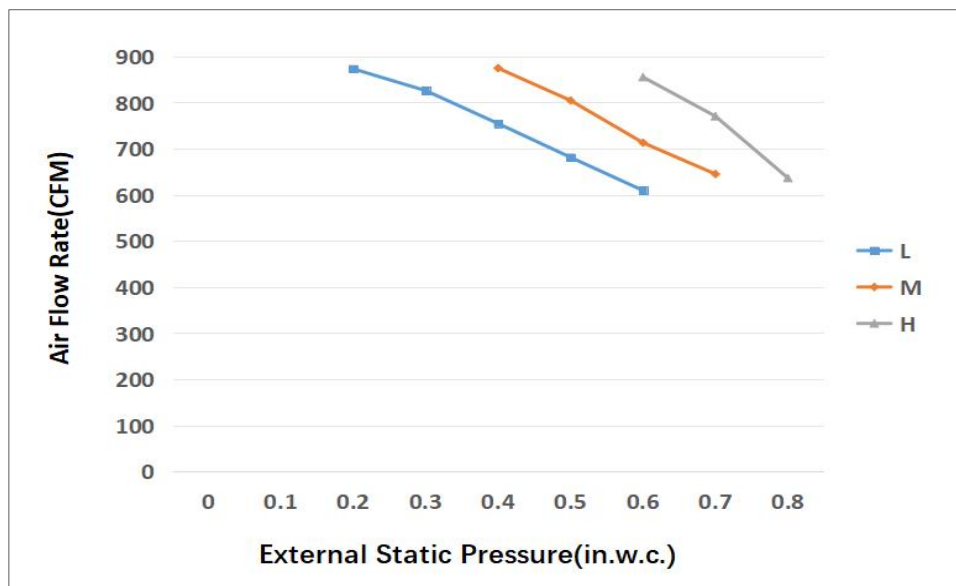


Dimensions \ Model		18K/24K		30K/36K		48K/60K	
		inch	mm	inch	mm	inch	mm
W	Model width	23-5/8	600	29-9/64	740	29-9/64	740
L	Model length	23-5/8	600	29-9/64	740	29-9/64	740
H	Model height	25	635	25	635	32-7/8	835
A	Liquid side valve height	2-31/64	63	2-31/64	63	2-31/64	63
B	Distance between two valves	3-1/32	77	3-1/32	77	3-1/32	77
C	Gas side valve height	2-9/32	58	2-9/32	58	2-9/32	58

## Installation Instruction For Outdoor Unit



#### Fan Performance For Indoor Unit



#### Features

- Multi-position installation: horizontal(left or right), vertical( up or down)
- External static pressure up to 0.80 In.W.G
- 1 inch R4.2 fiberglass free insulation reduces condensation and boosts efficiency(optional)
- Optional Auxiliary heat kit up to 20kW
- Easy Maintenance
- Multiple control options available:
  - Wired controller with built-in WiFi
  - Third-Party 24V Thermostat
- Adaptive Control System
- Crankcase heater equipped as standard