

SUBMITTAL DATA SHEET

Series Name: Star Pro Series
Model Number: BAH32-36-15 (309) / LUC32-36-15 (303)

Air Handler Heat Pump System	
Location:	Approval:
Engineer:	Date:
Submitted to:	Construction:
Submitted by:	Unit #:
Reference:	Drawing #:



INDOOR SPECIFICATION	
Indoor Air Flow (High/Low) (CFM)	1100/600
Indoor Noise Level (High/Low) (dBA)	50/42.5
Dimension (W×D×H)	inch 21-1/32×21-1/32×49-7/32
	mm 534×534×1245
Package (W×D×H)	inch 24-13/32×26-37/64×50-13/64
	mm 620×675×1275
Net/Gross Weight	lbs 142/157
	kg 64.5/71

OUTDOOR SPECIFICATION	
Compressor Type	TWIN-ROTARY
Compressor Model	KTM240D57UMT
Refrigerant	R32
Refrigerant Oil Charge(mL)	670
Refrigerant Oil	VG74
Outdoor Air Flow (Max) (CFM)	2800.0
Outdoor Noise Level (dBA)	59
Dimension (W×D×H)	inch 29-9/64×29-9/64×25
	mm 740×740×635
Package (W×D×H)	inch 30-5/16×30-5/16×26-3/16
	mm 770×770×665
Net/Gross Weight	lbs 140/148
	kg 63.5/67

EFFICIENCY			
Cooling		Heating	
SEER2	15.0	HSPF2-4	8.0
EER2	9.8	COP	3.40

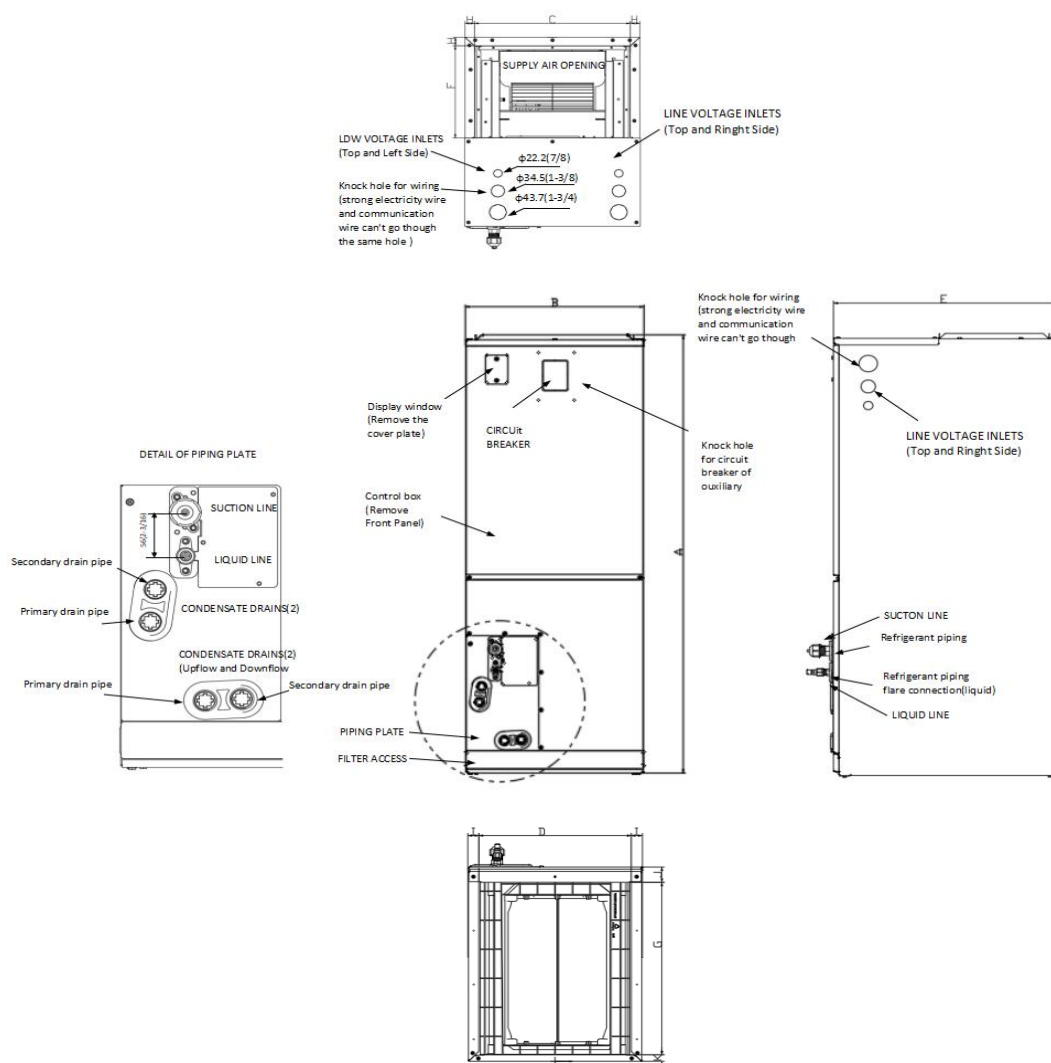
PERFORMANCE of Cooling	
Cooling (Btu/hr)	
Rated Capacity	34200
Min/Max Capacity	13000~38000
Moisture Removal(L/h)	3.4
Standard Operating Range(°F/°C)	5~131(-15~55)
Rated Cooling Conditions: Indoor: 80°F DB/67°F WB Outdoor: 95°F DB/75°F WB	

PERFORMANCE of Heating	
Heating (Btu/hr)	
1. @ 47°F Rated	36000
2. @ 47°F Min/Max Capacity	11000~39000
3. @ 17°F Rated	17500
4. @ 5°F Rated: Capacity / COP	23000/1.8
5. @ 5°F Max: Capacity	26000
Standard Operating Range(°F/°C)	-4~75(-20~24)
1. Rated Heating Conditions: Indoor: 70°F DB/60°F WB Outdoor: 47°F DB/43°F WB	
2. Rated Heating Conditions: Indoor: 70°F DB/60°F WB Outdoor: 17°F DB/15°F WB	
3. Heating Conditions, Compressor Operating at Max. Frequency Indoor: 70°F DB/60°F WB Outdoor: 5°F DB/5°F WB	

ELECTRICAL	
Indoor Power Supply	208/230V,60Hz,1Ph
Indoor MCA 115V/(208/230V)	2.9
Indoor MOP	3
Outdoor Power Supply	208/230V,60Hz,1Ph
Outdoor MCA	25
Outdoor MOP	30
Communication Wiring	AWG 25×3 Shielded
Compressor RLA	9.45
Outdoor Fan Motor RLA	2.3
Outdoor Fan Motor W	200
Indoor Fan Motor RLA	2.23
Indoor Fan Motor W	220
System Power Input @ Cooling (W)	3500(460~3600)
System Power Input @ Heating (W)	3200(600~3600)
MCA: Min. circuit amps (A)	MOCP: Max. over current protection (A)
RLA: Rated load amps (A)	W: Fan motor rated output (W)

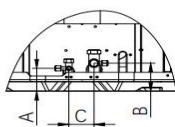
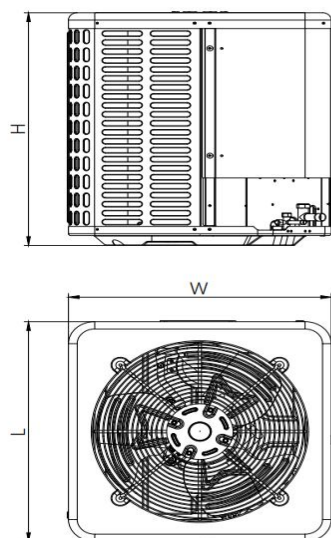
PIPING	
Throttle type(Indoor)	Piston
Throttle type(Outdoor)	Capillary
Liquid Size	9.52mm(3/8in)
Gas Size	19mm(3/4in)
Max. Piping Length(ft/m)	246(75)
Max. Height Difference(ft/m)	98.4(30)
Max. Pre-charged Length(ft/m)	24.6(7.5)
Refrigerant Pre-charged Amount(oz/kg)	102.29(2.9)
Additional Charge of Refrigerant((oz/ft)/(g/m))	0.52(48)
Connection Method	Flared

Indoor Unit Dimension



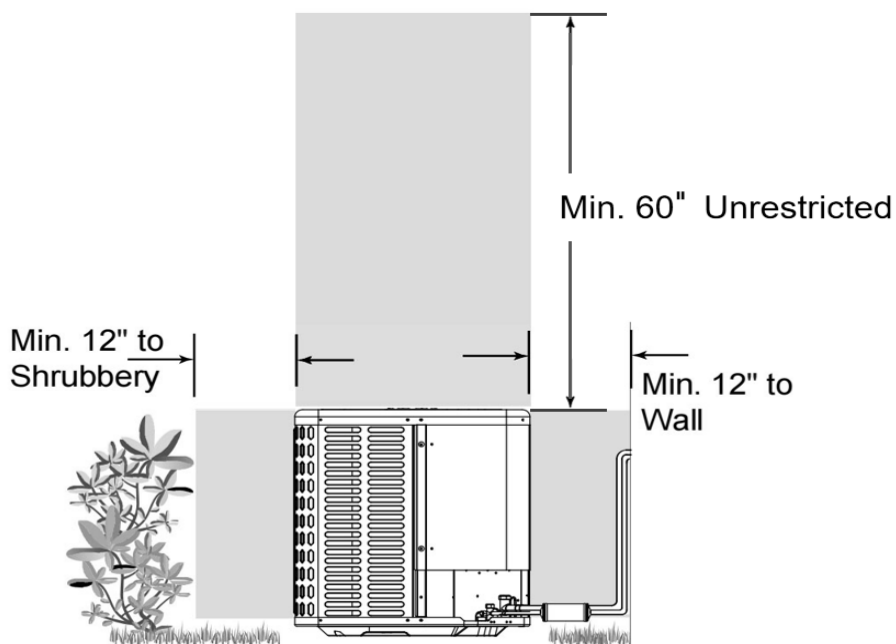
Dimensions		Model	18K/24K		30K/36K		48K/60K	
			inch	mm	inch	mm	inch	mm
A	Model Height		45-3/4	1162	49-49/64	1264	53-47/64	1365
B	Model width		17-41/64	448	21-9/64	537	24-39/64	625
C	Supply Air Opening width		15-5/8	397	19-9/64	486	22-19/32	574
D	Return Air Opening Width		15-25/64	391	18-47/64	476	22-23/64	568
E	Model Depth		21-7/64	536	21-7/64	536	21-7/64	536
F	Supply Air Opening Depth		10-9/32	261	10-9/32	261	10-9/32	261
G	Return Air Opening Depth		18-23/32	475.5	18-23/32	475.5	18-23/32	475.5
H	Supply Air Opening Clearance		15/16	24	15/16	24	15/16	24
I	Return Air Opening Side Clearance		1-1/8	28.5	1-1/8	28.5	1-1/8	28.5
J	Return Air Opening Front Clearance		1-21/32	42	1-21/32	42	1-21/32	42
K	Return Air Opening Back Clearance		45/64	18	45/64	18	45/64	18

Outdoor Unit Dimension

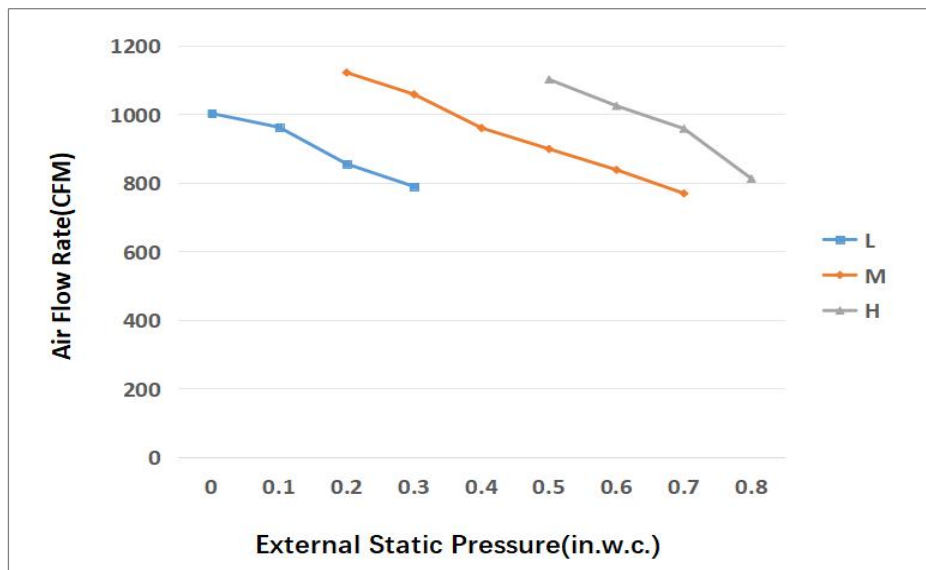


Dimensions \ Model		18K/24K		30K/36K		48K/60K	
		inch	mm	inch	mm	inch	mm
W	Model width	23-5/8	600	29-9/64	740	29-9/64	740
L	Model length	23-5/8	600	29-9/64	740	29-9/64	740
H	Model height	25	635	25	635	32-7/8	835
A	Liquid side valve height	2-31/64	63	2-31/64	63	2-31/64	63
B	Distance between two valves	3-1/32	77	3-1/32	77	3-1/32	77
C	Gas side valve height	2-9/32	58	2-9/32	58	2-9/32	58

Installation Instruction For Outdoor Unit



Fan Performance For Indoor Unit



Features

- Multi-position installation: horizontal(left or right), vertical(up or down)
- External static pressure up to 0.80 In.W.G
- 1 inch R4.2 fiberglass free insulation reduces condensation and boosts efficiency(optional)
- Optional Auxiliary heat kit up to 20kW
- Easy Maintenance
- Multiple control options available:
 - Wired controller with built-in WiFi
 - Third-Party 24V Thermostat
- Adaptive Control System
- Crankcase heater equipped as standard