



SUBMITTAL DATA SHEET

Series Name: Star Pro Series
Model Number: BAH32-60-15 (30B) / LUC32-60-15 (30S)

Air Handler Heat Pump System			
Location:		Approval:	
Engineer:		Date:	
Submitted to:		Construction:	
Submitted by:		Unit #:	
Reference:		Drawing #:	



INDOOR SPECIFICATION			
Indoor Air Flow (High/Low) (CFM)		1740/750	
Indoor Noise Level (High/Low) (dBA)		53/46	
Dimension (W×D×H)	inch	24-31/64×21-1/32×52-63/64	
	mm	622×534×1346	
Package (W×D×H)	inch	27-7/8×26-37/64×54-9/64	
	mm	708×675×1375	
Net/Gross Weight	lbs	164/183	
	kg	74.5/83	

OUTDOOR SPECIFICATION			
Compressor Type		TWIN-ROTARY	
Compressor Model		KTM310D85UMT	
Refrigerant		R32	
Refrigerant Oil Charge(mL)		870	
Refrigerant Oil		VG74	
Outdoor Air Flow (Max) (CFM)		3050.0	
Outdoor Noise Level (dBA)		60	
Dimension (W×D×H)	inch	29-9/64×29-9/64×32-7/8	
	mm	740×740×835	
Package (W×D×H)	inch	30-5/16×30-5/16×34-1/16	
	mm	770×770×865	
Net/Gross Weight	lbs	170/181	
	kg	77/82	

EFFICIENCY			
Cooling		Heating	
SEER2	15.0	HSPF2-4	8.5
EER2	8.0	COP	3.50

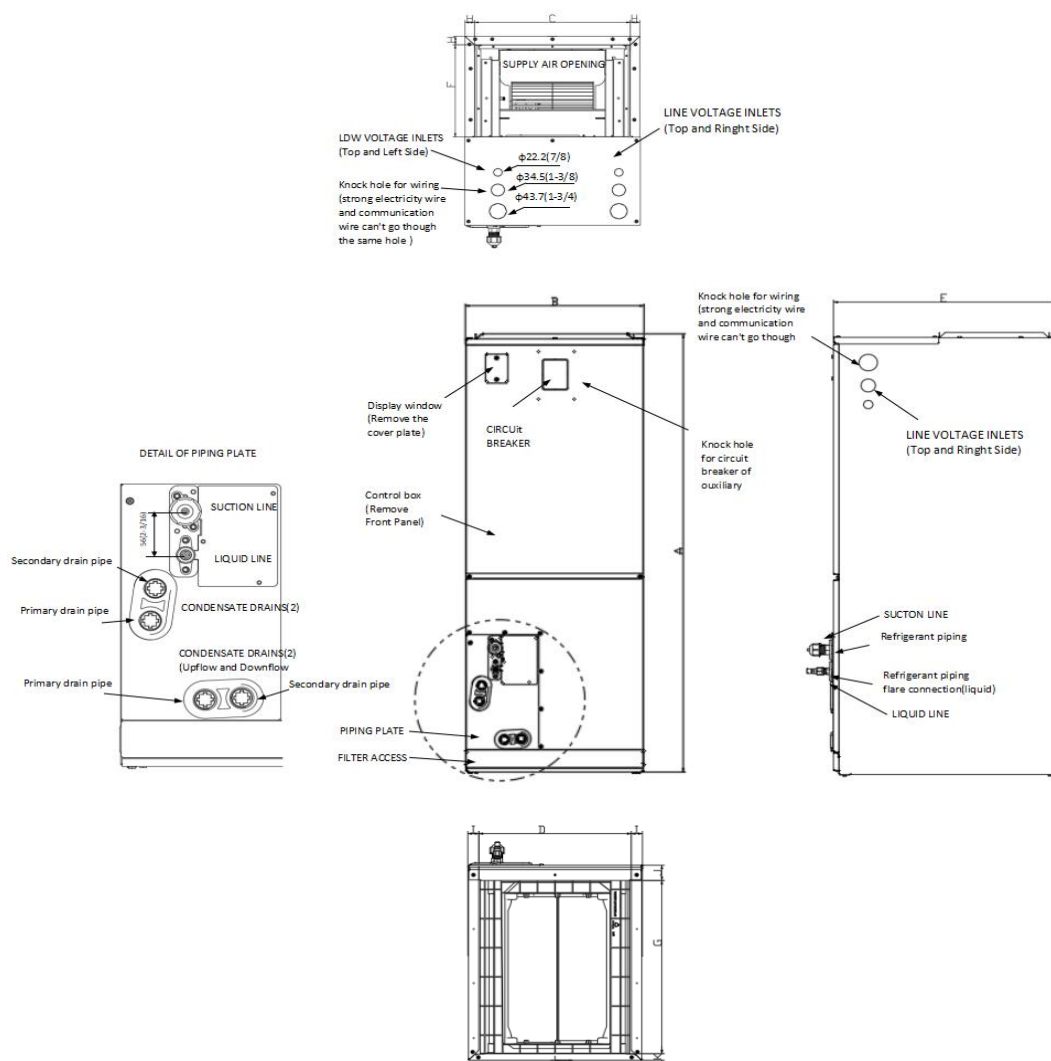
PERFORMANCE of Cooling	
Cooling (Btu/hr)	
Rated Capacity	52500
Min/Max Capacity	14000~53000
Moisture Removal(L/h)	5.5
Standard Operating Range(°F/°C)	5~131(-15~55)
Rated Cooling Conditions:	
Indoor: 80°F DB/67°F WB	
Outdoor: 95°F DB/75°F WB	

PERFORMANCE of Heating	
Heating (Btu/hr)	
1. @ 47°F Rated	54000
2. @ 47°F Min/Max Capacity	13400~55000
3. @ 17°F Rated	34500
4. @ 5°F Rated: Capacity / COP	30000/1.71
5. @ 5°F Max: Capacity	36000
Standard Operating Range(°F/°C)	-4~75(-20~24)
1. Rated Heating Conditions:	
Indoor: 70°F DB/60°F WB	
Outdoor: 47°F DB/43°F WB	
2. Rated Heating Conditions:	
Indoor: 70°F DB/60°F WB	
Outdoor: 17°F DB/15°F WB	
3. Heating Conditions, Compressor	
Indoor: 70°F DB/60°F WB	
Operating at Max. Frequency	
Outdoor: 5°F DB/5°F WB	

ELECTRICAL	
Indoor Power Supply	208/230V,60Hz,1Ph
Indoor MCA 115V/(208/230V)	7
Indoor MOP	10
Outdoor Power Supply	208/230V,60Hz,1Ph
Outdoor MCA	42
Outdoor MOP	50
Communication Wiring	AWG 25×3 Shielded
Compressor RLA	5.25
Outdoor Fan Motor RLA	2.3
Outdoor Fan Motor W	200
Indoor Fan Motor RLA	5.4
Indoor Fan Motor W	560
System Power Input @ Cooling (W)	6550(900~6800)
System Power Input @ Heating (W)	4550(900~6800)
MCA: Min. circuit amps (A)	MOCP: Max. over current protection (A)
RLA: Rated load amps (A)	W: Fan motor rated output (W)

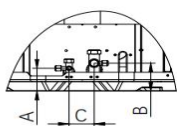
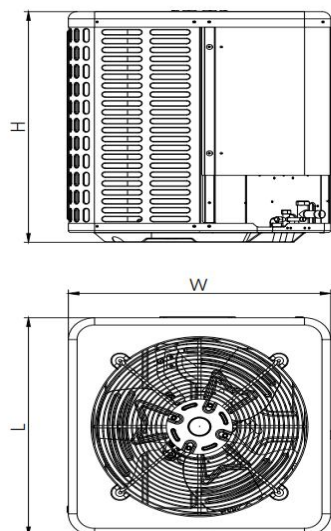
PIPING	
Throttle type(Indoor)	Piston
Throttle type(Outdoor)	Capillary
Liquid Size	9.52mm(3/8in)
Gas Size	19mm(3/4in)
Max. Piping Length(ft/m)	246(75)
Max. Height Difference(ft/m)	98.4(30)
Max. Pre-charged Length(ft/m)	24.6(7.5)
Refrigerant Pre-charged Amount(oz/kg)	119.93(3.4)
Additional Charge of Refrigerant((oz/ft)/(g/m))	0.52(48)
Connection Method	Flared

Indoor Unit Dimension



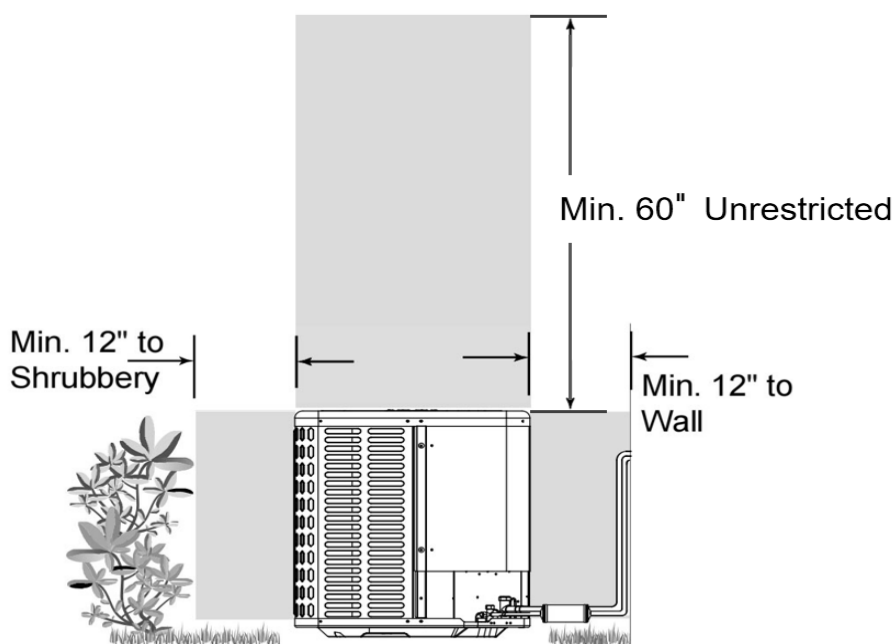
Dimensions		Model		18K/24K		30K/36K		48K/60K	
				inch	mm	inch	mm	inch	mm
A	Model Height			45-3/4	1162	49-49/64	1264	53-47/64	1365
B	Model width			17-41/64	448	21-9/64	537	24-39/64	625
C	Supply Air Opening width			15-5/8	397	19-9/64	486	22-19/32	574
D	Return Air Opening Width			15-25/64	391	18-47/64	476	22-23/64	568
E	Model Depth			21-7/64	536	21-7/64	536	21-7/64	536
F	Supply Air Opening Depth			10-9/32	261	10-9/32	261	10-9/32	261
G	Return Air Opening Depth			18-23/32	475.5	18-23/32	475.5	18-23/32	475.5
H	Supply Air Opening Clearance			15/16	24	15/16	24	15/16	24
I	Return Air Opening Side Clearance			1-1/8	28.5	1-1/8	28.5	1-1/8	28.5
J	Return Air Opening Front Clearance			1-21/32	42	1-21/32	42	1-21/32	42
K	Return Air Opening Back Clearance			45/64	18	45/64	18	45/64	18

Outdoor Unit Dimension

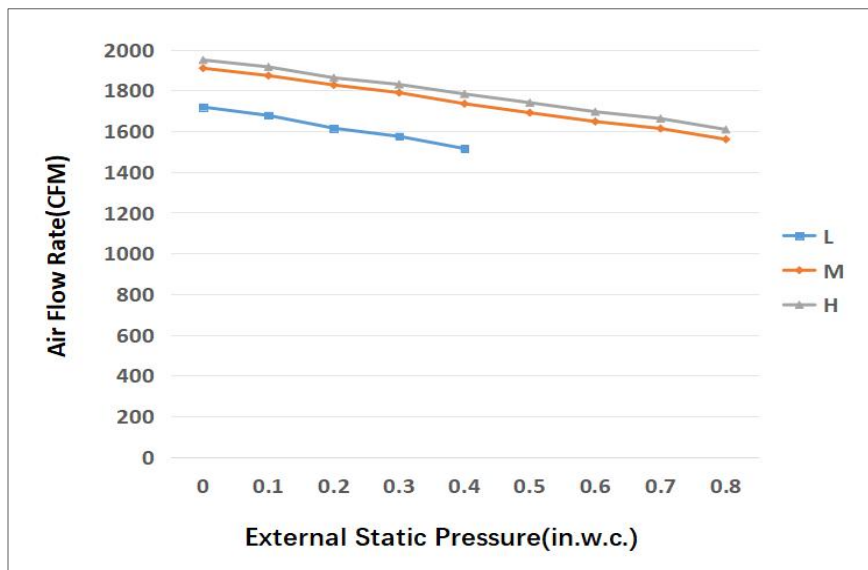


Dimensions \ Model		18K/24K		30K/36K		48K/60K	
		inch	mm	inch	mm	inch	mm
W	Model width	23-5/8	600	29-9/64	740	29-9/64	740
L	Model length	23-5/8	600	29-9/64	740	29-9/64	740
H	Model height	25	635	25	635	32-7/8	835
A	Liquid side valve height	2-31/64	63	2-31/64	63	2-31/64	63
B	Distance between two valves	3-1/32	77	3-1/32	77	3-1/32	77
C	Gas side valve height	2-9/32	58	2-9/32	58	2-9/32	58

Installation Instruction For Outdoor Unit



Fan Performance For Indoor Unit



Features

- Multi-position installation: horizontal(left or right), vertical(up or down)
- External static pressure up to 0.80 In.W.G
- 1 inch R4.2 fiberglass free insulation reduces condensation and boosts efficiency(optional)
- Optional Auxiliary heat kit up to 20kW
- Easy Maintenance
- Multiple control options available:
 - Wired controller with built-in WiFi
 - Third-Party 24V Thermostat
- Adaptive Control System
- Crankcase heater equipped as standard