

Air Handler Heat Pump System			
Location:		Approval:	
Engineer:		Date:	
Submitted to:		Construction:	
Submitted by:		Unit #:	
Reference:		Drawing #:	



INDOOR SPECIFICATION			
Indoor Air Flow (High/Low) (CFM)		1110/520	
Indoor Noise Level (High/Low) (dBA)		50/38	
Dimension (W×D×H)	inch	21-1/32×21-1/32×49-7/32	
	mm	534×534×1245	
Package (W×D×H)	inch	24-13/32"×26-37/64"×50-13/64"	
	mm	620×675×1275	
Net/Gross Weight	lbs	137/151	
	kg	62/68.5	

OUTDOOR SPECIFICATION			
Compressor Type		TWIN-ROTARY	
Compressor Model		KTM240D57UMT	
Refrigerant		R32	
Refrigerant Oil Charge(mL)		670	
Refrigerant Oil		VG74	
Outdoor Air Flow (Max) (CFM)		2800.0	
Outdoor Noise Level (dBA)		58	
Dimension (W×D×H)	inch	29-9/64×29-9/64×25	
	mm	740×740×635	
Package (W×D×H)	inch	30-5/16×30-5/16×26-3/16	
	mm	770×770×665	
Net/Gross Weight	lbs	143/151	
	kg	65/69	

EFFICIENCY			
Cooling		Heating	
SEER2	19.3	HSPF2-4	8.1
EER2	11.0	COP	3.20

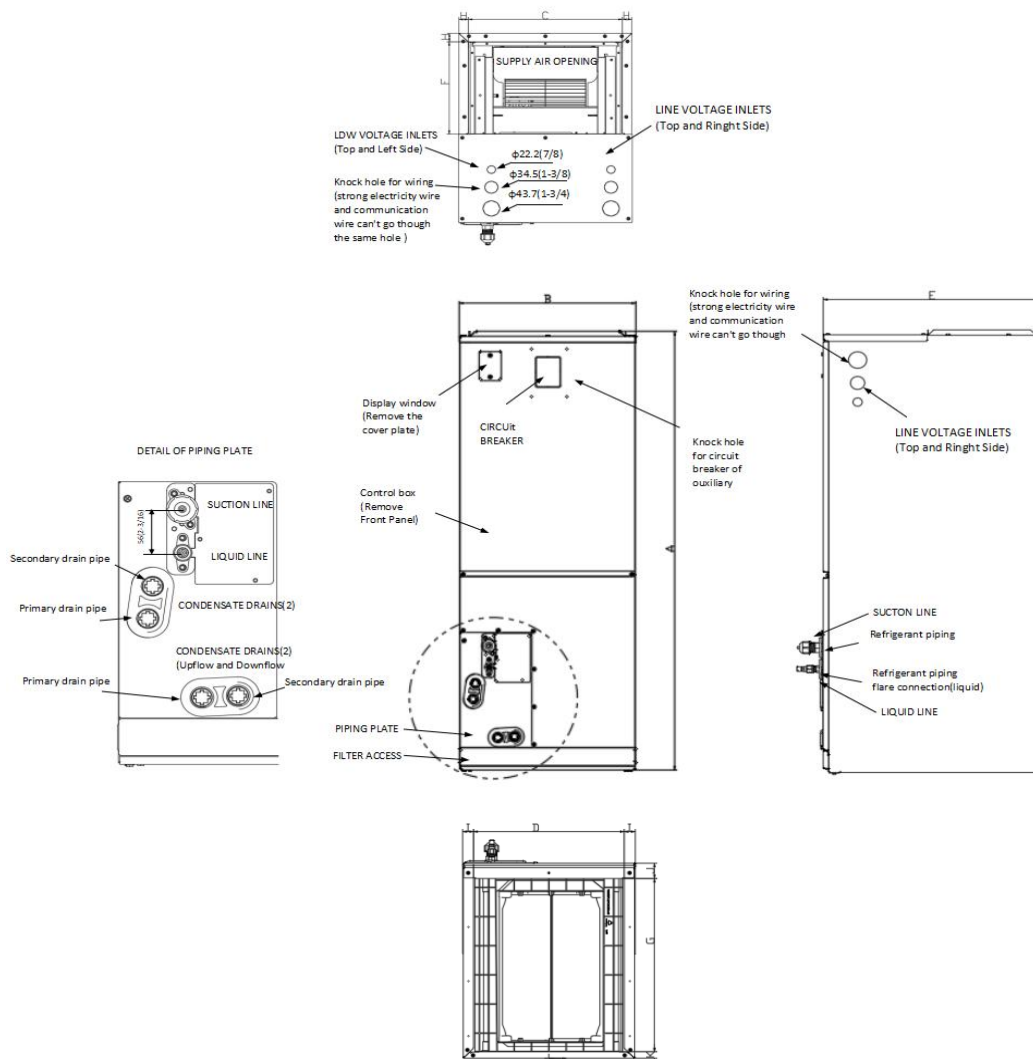
PERFORMANCE of Cooling	
Cooling (Btu/hr)	
Rated Capacity	36000
Min/Max Capacity	13000~38000
Moisture Removal(L/h)	0
Standard Operating Range(*F/*C)	5~131(-15~55)
Rated Cooling Conditions:	Indoor: 80°F DB/67°F WB Outdoor: 95°F DB/75°F WB

PERFORMANCE of Heating	
Heating (Btu/hr)	
1. @ 47°F Rated	34200
2. @ 47°F Min/Max Capacity	11000~39000
3. @ 17°F Rated	17500
4. @ 5°F Rated: Capacity / COP	27000/1.72
5. @ 5°F Max: Capacity	27000
Standard Operating Range(*F/*C)	-4~75(-20 ~ 24)
1. Rated Heating Conditions:	Indoor: 70°F DB/60°F WB Outdoor: 47°F DB/43°F WB
2. Rated Heating Conditions:	Indoor: 70°F DB/60°F WB Outdoor: 17°F DB/15°F WB
3. Heating Conditions, Compressor Operating at Max. Frequency	Indoor: 70°F DB/60°F WB Outdoor: 5°F DB/5°F WB

ELECTRICAL			
Indoor Power Supply		208/230V,60Hz,1Ph	
Indoor MCA		5	
Indoor MOP		15	
Outdoor Power Supply		208/230V,60Hz,1Ph	
Outdoor MCA		24	
Outdoor MOP		30	
Communication Wiring		AWG 25×3 Shielded	
Compressor RLA		9.45	
Outdoor Fan Motor RLA		2.3	
Outdoor Fan Motor W		200	
Indoor Fan Motor RLA		3.6	
Indoor Fan Motor W		375	
System Power Input @ Cooling (W)		2905.98290598291(460~3600)	
System Power Input @ Heating (W)		3300(600~3600)	
MCA: Min. circuit amps (A)		MOCP: Max. over current protection (A)	
RLA: Rated load amps (A)		W: Fan motor rated output (W)	

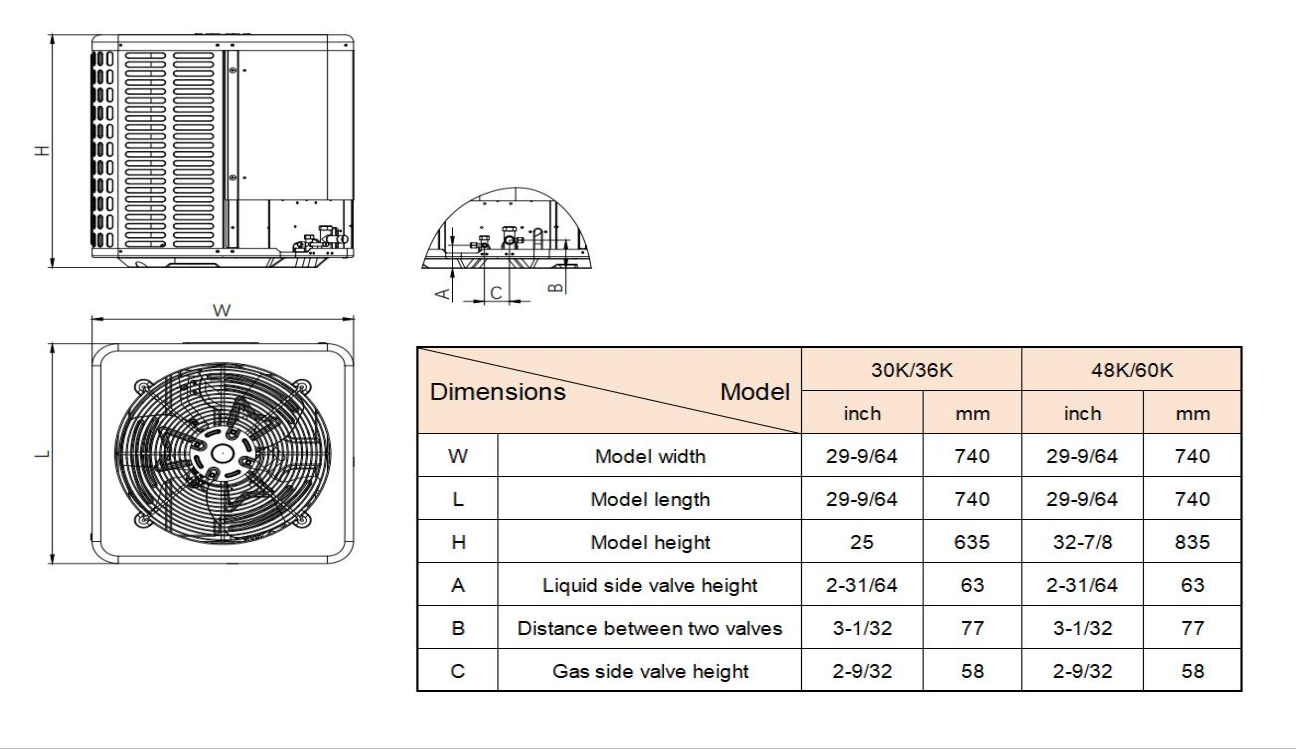
PIPING			
Throttle type(Indoor)		Piston	
Throttle type(Outdoor)		EXV	
Liquid Size		9.52mm(3/8in)	
Gas Size		19mm(3/4in)	
Max. Piping Length(ft/m)		246(75)	
Max. Height Difference(ft/m)		98.4(30)	
Max. Pre-charged Length(ft/m)		24.6(7.5)	
Refrigerant Pre-charged Amount(oz/kg)		102.3(2.9)	
Additional Charge of Refrigerant((oz/ft)/(g/m))		0.52(48)	
Connection Method		Flared	

## Indoor Unit Dimension

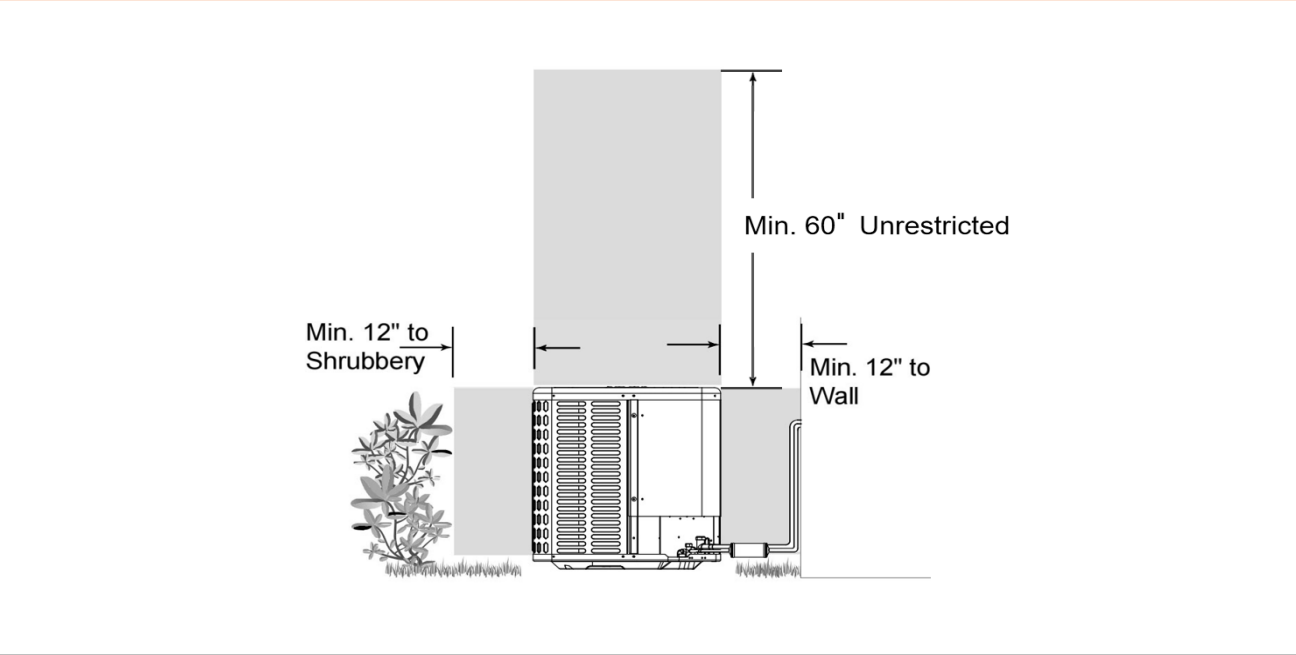


		Model	24K/36K	48K/60K
Dimensions			inch	inch
A	Model Height		49-7/32	52-63/64
B	Model Width		21-1/32	24-31/64
C	Supply air opening width		19-9/64	22-19/32
D	Return air opening width		18-47/64	22-23/64
E	Model Depth		21-1/32	21-1/32
F	Supply air opening Depth		10-9/32	10-9/32
G	Return air opening Depth		18-23/32	18-23/32
H	Supply air opening Clearance		15/16	15/16
I	Return air opening side Clearance		1-1/8	1-1/8
J	Return air opening front Clearance		1-21/32	1-21/32
K	Return air opening back Clearance		45/64	45/64

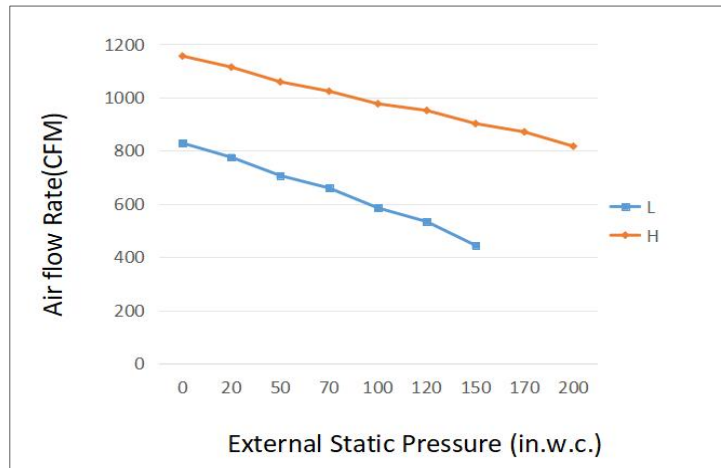
Outdoor Unit Dimension



Installation Instruction For Outdoor Unit



#### Fan Performance For Indoor Unit



#### Features

- DC inverter technology and energy-saving, SEER2 up to 19.7
- ECM fan motor with constant torque technology,
- Multi-position installation: horizontal(left or right), vertical( up or down)
- External static pressure up to 0.80 In.W.G
- 1 inch R4.2 fiberglass free insulation reduces condensation and boosts efficiency(optional)
- High precision electrical expansion valve (outdoor unit)
- Bulit-in thermal expansion valve (indoor unit)
- Optional Auxiliary heat kit up to 20kW
- Easy Maintenance
- Multiple control options available:
  - Wired controller with built-in WiFi
  - Third-Party 24V Thermostat
- Adaptive Control System
- Crankcase heater equipped as standard