

# ComfortStar®

Air Conditioning & Heating Products

## HEAT PUMP PACKAGE UNITS PRODUCTS CATALOG



### CPH7 - CDP7 SERIES

2 TO  
5 TONS

208/230V  
1PH & 3PH, 60HZ



*Comfort, it's in our name.*



12860 N.W. South River Dr. | Medley, FL 33178

Toll Free: 1-866-524-9898 | Phone: 1-305-500-9898 | Fax: 1-305-500-9896 | Email us: info@comfortstarusa.com

[www.comfortstarusa.com](http://www.comfortstarusa.com)

# TABLE OF CONTENTS

<b>03</b> CPH7 Series	Features Heat Pump Package Units Horizontal Discharge
<b>04</b> CPH7 Series	Specifications
<b>06</b> CPH7 Series	Unit Dimensions
<b>07</b> CDP7 Series	Features Heat Pump Package Units Horizontal and Downflow Discharge
<b>08</b> CDP7 Series	Specifications
<b>10</b> CDP7 Series	Unit Dimensions



# CPH7 Series

HEAT PUMP  
PACKAGE UNITS

HORIZONTAL DISCHARGE

**2 UP TO 5 TONS**

208/230V, 1Ph, 60Hz



## FEATURES:

- Quiet horizontal discharge.
- Power-painted galvanized steel cabinet.
- Electric heat kit available as a field-installed option: 5/8/10/15/20kW.
- High-efficiency compressors operate smoothly, quietly, and consistently.
- Internal safeguards protect the compressor against high and low pressure, and coil temperature.
- Aluminum tube/aluminum fin coil.
- High-efficiency ECM blower motor.
- AHRI Certified and ETL listed.
- Compliant with UL-60335 certification.
- Uses more environmentally friendly R454B refrigerant.
- Full series 5mm condenser, higher heat exchange efficiency with less flammable refrigerant charge, safer.
- Full DC variable speed external motor, more efficient, smarter, and quieter.



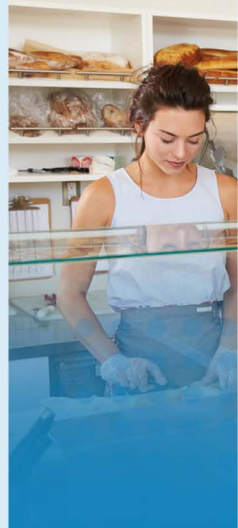
# CPH7 Series

HEAT PUMP  
PACKAGE UNITS

HORIZONTAL DISCHARGE

**2 UP TO 5 TONS**

208/230V, 1Ph, 60Hz



	Model	CPH7-24-15	CPH7-30-15	CPH7-36-15
Indoor Blower Motor	Cooling (BTU/h)	22,800	28,200	34,200
	Heating (BTU/h)	22,400	27,600	34,200
Electrical Data	Voltage / Phase (60 Hz)	208/230V-1Ph	208/230V-1Ph	208/230V-1Ph
	Min. / Max. Voltage (V)	187/253	187/253	187/253
	Min. Circuit Amps (MCA) (A)	17.9	24.4	27.1
	Max. Overcurrent Protection (MOP) (A)	25	30	35
Compressor	Type	Rotary	Rotary	Scroll
	Stage	Single	Single	Single
	Rated Load Amps (RLA) (A)	11.9	15.5	17.6
	Locked Rotor Amps (LRA) (A)	55	55	86
Outdoor Coil	Type	Tube & Fin	Tube & Fin	Tube & Fin
	Tube outside dia. (mm)	5	5	5
Outdoor Fan Motor	Motor Type	ECM	ECM	ECM
	Capacitor (uF)	/	/	/
	Horsepower (HP)	1/3	1/3	1/3
	Full Load Amps (FLA) (A)	1.4	2.1	2.1
	Rated Airflow (CFM)	2,250	2,550	2,550
Indoor Coil	Type	Tube & Fin	Tube & Fin	Tube & Fin
	Tube outside dia. (mm)	7	7	7
Indoor Blower Motor	Motor Type	PSC	ECM	ECM
	Capacitor (uF)	/	/	/
	Horsepower (HP)	1/5	1/2	1/2
	Full Load Amps (FLA) (A)	1.6	2.9	3
	Rated Airflow (CFM at 0.58 in H2O)	840	1050	1200
Refrigeration System	Refrigerant Control	Piston	Piston	Piston
	Refrigerant Charge (lbs. - oz.)	3 lbs. 14 oz.	3 lbs. 10 oz.	3 lbs. 12 oz.
Sound Power	(dB(A))	80	81	81
Operation Range	Cooling (°F)	32-114.9	32-114.9	32-114.9
	Heating (°F)	-0.4-86	-0.4-86	-0.4-86
Dimension & Weight	Unpacking (W*H*D) inch	37.75 x 24.81 x 52	37.75 x 24.81 x 52	37.75 x 24.81 x 52
	Packing (W*H*D) inch	38 x 25.81 x 52.76	38 x 25.81 x 52.76	38 x 25.81 x 52.76
	Net/Gross weight lb.	326/340	326/340	337/351
Shipping per STD 40HQ		84	84	84



# CPH7 Series

HEAT PUMP  
PACKAGE UNITS

HORIZONTAL DISCHARGE

**2 UP TO 5 TONS**

208/230V, 1Ph, 60Hz



	Model	CPH7-42-15	CPH7-48-15	CPH7-60-15
Indoor Blower Motor	Cooling (BTU/h)	40,500	46,500	56,500
	Heating (BTU/h)	40,500	46,000	56,000
Electrical Data	Voltage / Phase (60 Hz)	208/230V-1Ph	208/230V-1Ph	208/230V-1Ph
	Min. / Max. Voltage (V)	187/253	187/253	187/253
	Min. Circuit Amps (MCA) (A)	29.9	36	48.6
	Max. Overcurrent Protection (MOP) (A)	40	45	60
Compressor	Type	Scroll	Scroll	Scroll
	Stage	Single	Single	Single
	Rated Load Amps (RLA) (A)	19.9	23.8	32
	Locked Rotor Amps (LRA) (A)	96	95	125
Outdoor Coil	Type	Tube & Fin	Tube & Fin	Tube & Fin
	Tube outside dia. (mm)	5	5	5
Outdoor Fan Motor	Motor Type	ECM	ECM	ECM
	Capacitor (uF)	/	/	/
	Horsepower (HP)	1/3	1/3	1/3
	Full Load Amps (FLA) (A)	2.3	2.3	2.8
Indoor Coil	Rated Airflow (CFM)	3,600	3,600	3,600
	Type	Tube & Fin	Tube & Fin	Tube & Fin
Indoor Blower Motor	Tube outside dia. (mm)	7	7	7
	Motor Type	PSC	PSC	ECM
Refrigeration System	Capacitor (uF)	/	/	/
	Horsepower (HP)	8/15	8/15	3/4
	Full Load Amps (FLA) (A)	2.7	2.9	5.8
	Rated Airflow (CFM at 0.58 in H2O)	1430	1620	1750
Refrigeration System	Refrigerant Control	Piston	Piston	Piston
	Refrigerant Charge (lbs. - oz.)	5 lbs. 15 oz.	6 lbs. 1 oz.	5 lbs. 15 oz.
Sound Power	(dB(A))	80	80	81
Operation Range	Cooling (°F)	32-114.9	32-114.9	32-114.9
	Heating (°F)	-0.4-86	-0.4-86	-0.4-86
Dimension & Weight	Unpacking (W*H*D) inch	42.06 x 33.06 x 58.5	42.06 x 33.06 x 58.5	42.06 x 33.06 x 58.5
	Packing (W*H*D) inch	42.24 x 34.07 x 59.25	42.24 x 34.07 x 59.25	42.24 x 34.07 x 59.25
	Net/Gross weight lb.	454/472	454/472	450/467
Shipping per STD 40HQ		45	45	45



# CPH7 Series

HEAT PUMP  
PACKAGE UNITS

HORIZONTAL DISCHARGE

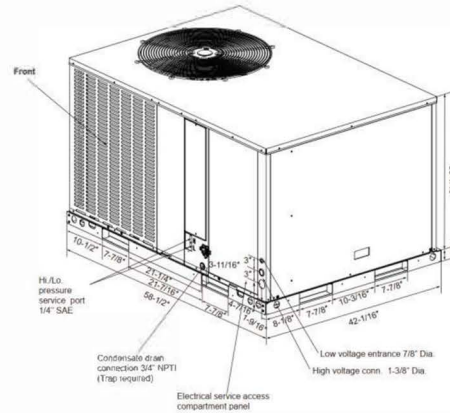
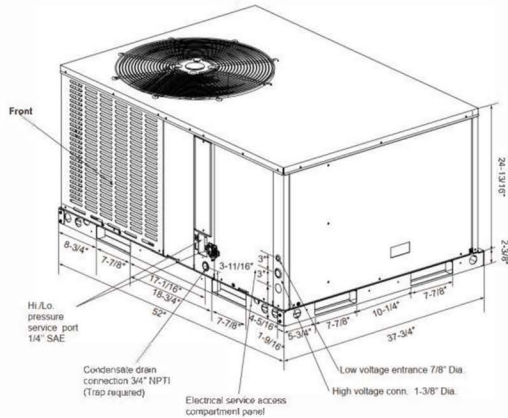
2 UP TO 5 TONS

208/230V, 1Ph, 60Hz

CPH7-24-15

CPH7-30-15

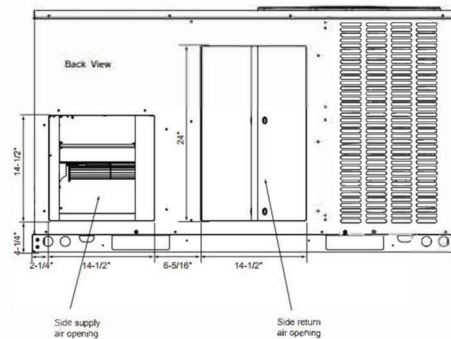
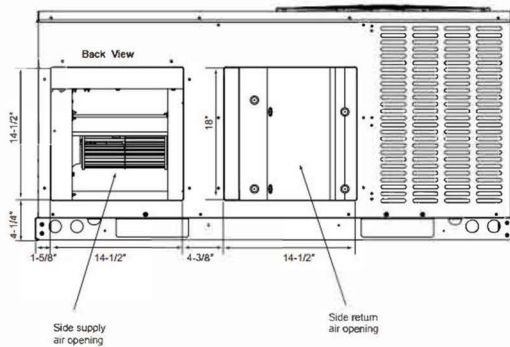
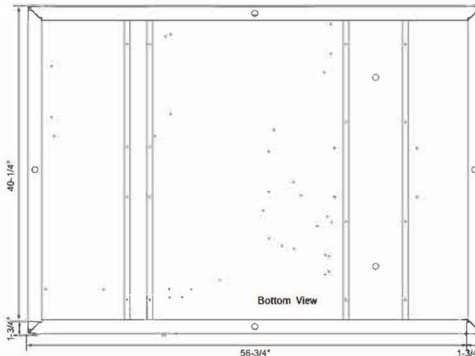
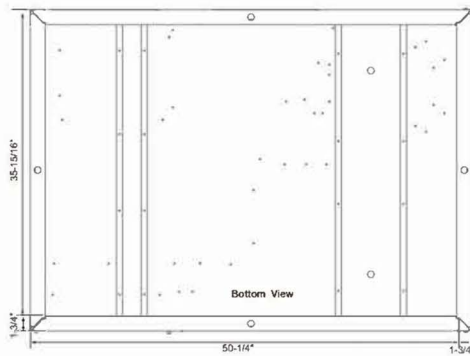
CPH7-36-15



CPH7-42-15

CPH7-48-15

CPH7-60-15



## UNIT DIMENSION AND WEIGHTS:

Model	Unit Width "W" in.	Unit Height "H" in.	Unit Length "D" in.	Net Weight lb	Gross Weight lb
CPH7-24-15	37.75	24.81	52	326	340
CPH7-30-15	37.75	24.81	52	326	340
CPH7-36-15	37.75	24.81	52	337	351
CPH7-42-15	42.06	33.06	58.5	454	472
CPH7-48-15	42.06	33.06	58.5	454	472
CPH7-60-15	42.06	33.06	58.5	450	467



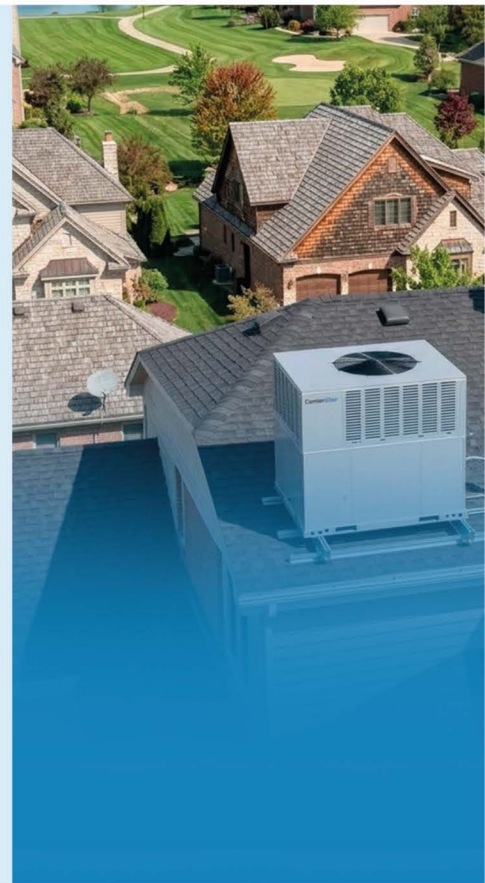
# CDP7 Series

HEAT PUMP  
PACKAGE UNITS

HORIZONTAL AND DOWNFLOW  
DISCHARGE

**2 UP TO 5 TONS**

**208/230V, 1Ph & 3Ph, 60Hz**



## FEATURES:

- Quiet horizontal discharge
- Compatible with side and bottom air discharge.
- Power-painted galvanized steel cabinet.
- Electric heat kit available as a field-installed option: 5/8/10/15/20kW.
- High-efficiency compressors operate smoothly, quietly, and consistently.
- Internal safeguards protect the compressor against high and low pressure, and coil temperature.
- Aluminum tube/aluminum fin coil.
- High-efficiency ECM blower motor.
- AHRI Certified and ETL listed.
- Compliant with UL-60335 certification.
- Uses more environmentally friendly R454B refrigerant.
- Full DC variable speed condenser motor, more efficient, smarter, and quieter.



# CDP7 Series

HEAT PUMP  
PACKAGE UNITS

HORIZONTAL & DOWNFLOW  
DISCHARGE

**2 UP TO 5 TONS**  
208/230V, 1Ph & 3Ph, 60Hz



		Model	CDP7-24-15	CDP7-30-15
Nominal Capacity	Cooling (BTU/h)		22,800	28,200
	Heating (BTU/h)		22,800	28,200
Electrical Data	Voltage / Phase (60 Hz)		208/230V-1Ph	208/230V-1Ph
	Min. / Max. Voltage (V)		187/253	187/253
	Min. Circuit Amps (MCA) (A)		17.8	22.5
	Max. Overcurrent Protection (MOP) (A)		25	30
Compressor	Type		Rotary	Rotary
	Stage		Single	Single
	Rated Load Amps (RLA) (A)		12	14
	Locked Rotor Amps (LRA) (A)		55	55
Outdoor Coil	Type		Tube & Fin	Tube & Fin
	Tube Size (O.D) (in)		9/32	9/32
Outdoor Fan Motor	Motor Type		PSC	PSC
	Capacitor (uF)		6	6
	Horsepower (HP)		1/12	1/12
	Full Load Amps (FLA) (A)		0.8	0.8
	Rated RPM		878	878
Indoor Coil	Type		Tube & Fin	Tube & Fin
	Tube Size (O.D) (in)		9/32	9/32
Indoor Blower Motor	Motor Type		PSC	ECM
	Capacitor (uF)		12	/
	Horsepower (HP)		1/5	1/2
	Full Load Amps (FLA) (A)		2	4.2
	Rated RPM		908	740
Refrigeration System	Refrigerant Control		Orifice	Orifice
	Refrigerant Charge (lbs. - oz.)		5 lbs. 10 oz.	5 lbs. 3 oz.
Sound Power	(dB(A))		78	78
Operation Range	Cooling (°F)		50-125	50-125
	Heating (°F)		5-86	5-86
Dimension & Weight	Unpacking (W*H*D)	inch	35-1/16 x 46-13/16x 50-11/16	35-1/16 x 46-13/16x 50-11/16
	Packing (W*H*D)	inch	36-7/8 x 49-7/16x 52-3/8	36-7/8 x 49-7/16x 52-3/8
	Net/Gross weight	lb.	397/416	401/420



# CDP7 Series

HEAT PUMP  
PACKAGE UNITS

HORIZONTAL & DOWNFLOW  
DISCHARGE

**2 UP TO 5 TONS**

**208/230V, 1Ph & 3Ph, 60Hz**



	Model	CDP7-36-15	CDP7-42-15	
Nominal Capacity	Cooling (BTU/h)	34,000	41,000	
	Heating (BTU/h)	34,200	41,000	
Electrical Data	Voltage / Phase (60 Hz)	208/230V-1Ph	208/230V-1Ph	
	Min. / Max. Voltage (V)	187/253	187/253	
	Min. Circuit Amps (MCA) (A)	27.7	34.1	
	Max. Overcurrent Protection (MOP) (A)	35	45	
Compressor	Type	Rotary	Rotary	
	Stage	Single	Single	
	Rated Load Amps (RLA) (A)	18	21	
	Locked Rotor Amps (LRA) (A)	72	86	
Outdoor Coil	Type	Tube & Fin	Tube & Fin	
	Tube Size (O.D) (in)	9/32	9/32	
Outdoor Fan Motor	Motor Type	PSC	PSC	
	Capacitor (uF)	6	15	
	Horsepower (HP)	1/6	1/3	
	Full Load Amps (FLA) (A)	1	2.1	
	Rated RPM	840	1,050	
Indoor Coil	Type	Tube & Fin	Tube & Fin	
	Tube Size (O.D) (in)	9/32	9/32	
Indoor Blower Motor	Motor Type	ECM	ECM	
	Capacitor (uF)	/	/	
	Horsepower (HP)	1/2	3/4	
	Full Load Amps (FLA) (A)	4.2	5.7	
	Rated RPM	880	950	
Refrigeration System	Refrigerant Control	Orifice	Orifice	
	Refrigerant Charge (lbs. - oz.)	6 lbs. 13 oz.	7 lbs. 15 oz.	
Sound Power	(dB(A))	78	80	
Operation Range	Cooling (°F)	50~125	50~125	
	Heating (°F)	5~86	5~86	
Dimension & Weight	Unpacking (W*H*D)	inch	35-1/16 x 46-13/16 x 50-11/16	44-13/16 x 51-7/16 x 51-9/16
	Packing (W*H*D)	inch	36-7/8 x 49-7/16 x 52-3/8	45-5/6 x 52-1/3 x 52-5/7
	Net/Gross weight	lb.	415/435	526/544



# CDP7 Series

HEAT PUMP  
PACKAGE UNITS

HORIZONTAL & DOWNFLOW  
DISCHARGE

**2 UP TO 5 TONS**

**208/230V, 1Ph & 3Ph, 60Hz**



	Model	CDP7-48-15	CDP7-60-15	CDP7-60-15-3
Nominal Capacity	Cooling (BTU/h)	46,500	56,500	56,500
	Heating (BTU/h)	45,600	57,000	57,000
Electrical Data	Voltage / Phase (60 Hz)	208/230V-1Ph	208/230V-1Ph	208/230V-3Ph
	Min. / Max. Voltage (V)	187/253	187/253	187/253
	Min. Circuit Amps (MCA) (A)	33.9	42.8	29.1
	Max. Overcurrent Protection (MOP) (A)	45	50	40
Compressor	Type	Scroll	Scroll	Scroll
	Stage	Single	Single	Three
	Rated Load Amps (RLA) (A)	22	28	17
	Locked Rotor Amps (LRA) (A)	95	125	123
Outdoor Coil	Type	Tube & Fin	Tube & Fin	Tube & Fin
	Tube Size (O.D) (in)	9/32	9/32	9/32
Outdoor Fan Motor	Motor Type	PSC	PSC	PSC
	Capacitor (uF)	15	15	15
	Horsepower (HP)	1/3	1/3	1/3
	Full Load Amps (FLA) (A)	2.1	2.1	2.1
	Rated RPM	1,050	1,050	1,050
Indoor Coil	Type	Tube & Fin	Tube & Fin	Tube & Fin
	Tube Size (O.D) (in)	9/32	9/32	9/32
Indoor Blower Motor	Motor Type	PSC	ECM	ECM
	Capacitor (uF)	20	/	/
	Horsepower (HP)	4/5	3/4	3/4
	Full Load Amps (FLA) (A)	4.3	5.7	5.7
	Rated RPM	976	950	950
Refrigeration System	Refrigerant Control	Orifice	Orifice	Orifice
	Refrigerant Charge (lbs. - oz.)	8 lbs. 3 oz.	9 lbs. 8 oz.	9 lbs. 8 oz.
Sound Power	(dB(A))	80	80	80
Operation Range	Cooling (°F)	50-125	50-125	50-125
	Heating (°F)	5-86	5-86	5-86
Dimension & Weight	Unpacking (W*H*D) inch	44-13/16 x 51-7/16 x 51-9/16	44-13/16 x 51-7/16 x 51-9/16	44-13/16 x 51-7/16 x 51-9/16
	Packing (W*H*D) inch	45-5/6 x 52-1/3 x 52-5/7	45-5/6 x 52-1/3 x 52-5/7	45-5/6 x 52-1/3 x 52-5/7
	Net/Gross weight lb.	544/562	551/569	564/584



# CDP7 Series

HEAT PUMP  
PACKAGE UNITS

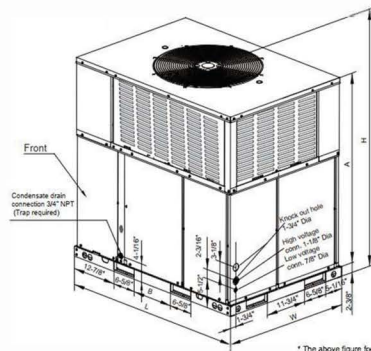
HORIZONTAL & DOWNFLOW DISCHARGE

**2 UP TO 5 TONS**  
208/230V, 1Ph & 3Ph, 60Hz

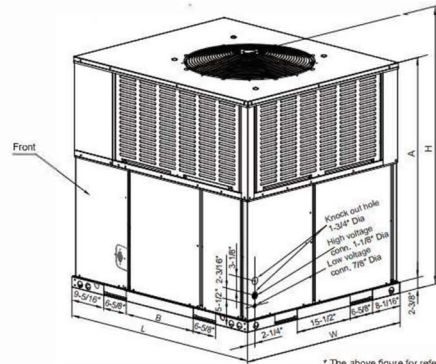
CDP7-24-15

CDP7-30-15

CDP7-36-15



\* The above figure for

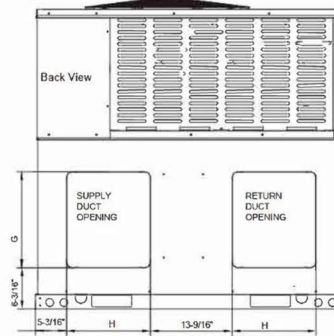
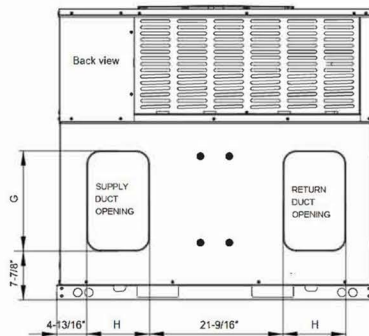
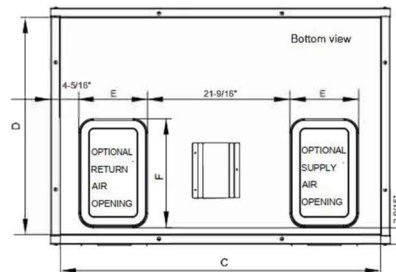
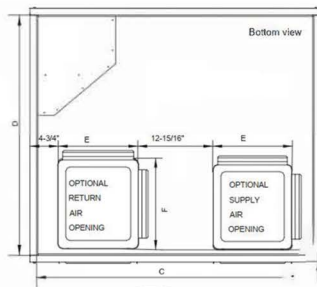


\* The above figure for reference purpose only.

CDP7-42-15

CDP7-48-15

CDP7-60-15



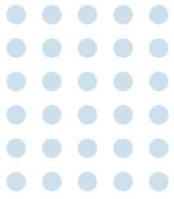
## UNIT DIMENSION

Model	"L" in.	"W" in.	"H" in.	"A" in.	"B" in.
CDP7-24-15					
CDP7-30-15	50-11/16	35-1/16	46-13/16	44-1/16	11-3/4
CDP7-36-15					
CDP7-42-15	51-9/16	44-13/16	51-7/16	47-5/16	19-11/16
CDP7-48-15					
CDP7-60-15					

## SUPPLY AND RETURN DIMENSIONS

Model	"C" in.	"D" in.	"E" in.	"F" in.	"G" in.	"H" in.
CDP7-24-15						
CDP7-30-15	47-13/16	32-1/4	9-15/16	15-7/8	15-3/4	9-3/4
CDP7-36-15						
CDP7-42-15	49-1/4	42-1/2	14-1/8	16-1/8	15-7/8	13-7/8
CDP7-48-15						
CDP7-60-15						





# ComfortStar®

Air Conditioning & Heating Products

## HEAT PUMP PACKAGE UNITS

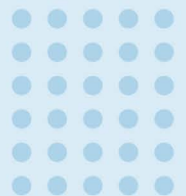
### CPH7 - CDP7 SERIES

2 TO  
5 TONS

208/230V  
1 PH & 3PH, 60HZ



*Comfort, it's in our name.*



12201 N.W. 107TH AVENUE, MEDLEY, FL 33178

TOLL FREE: 1-866-524-9898 | PHONE: 305-500-9898 | FAX: 305-500-9896

All rights reserved. Printed in the United States of America. This publication is protected by Copyright and permission must be obtained by eAir, LLC prior to any reproduction or transmission in any form or by any means, electronic, mechanical, photocopying, recording or likewise. Warranty registration is not required in California.

CPH7&CDP72026

**e-mail: [info@comfortstarusa.com](mailto:info@comfortstarusa.com) | [www.comfortstarusa.com](http://www.comfortstarusa.com)**