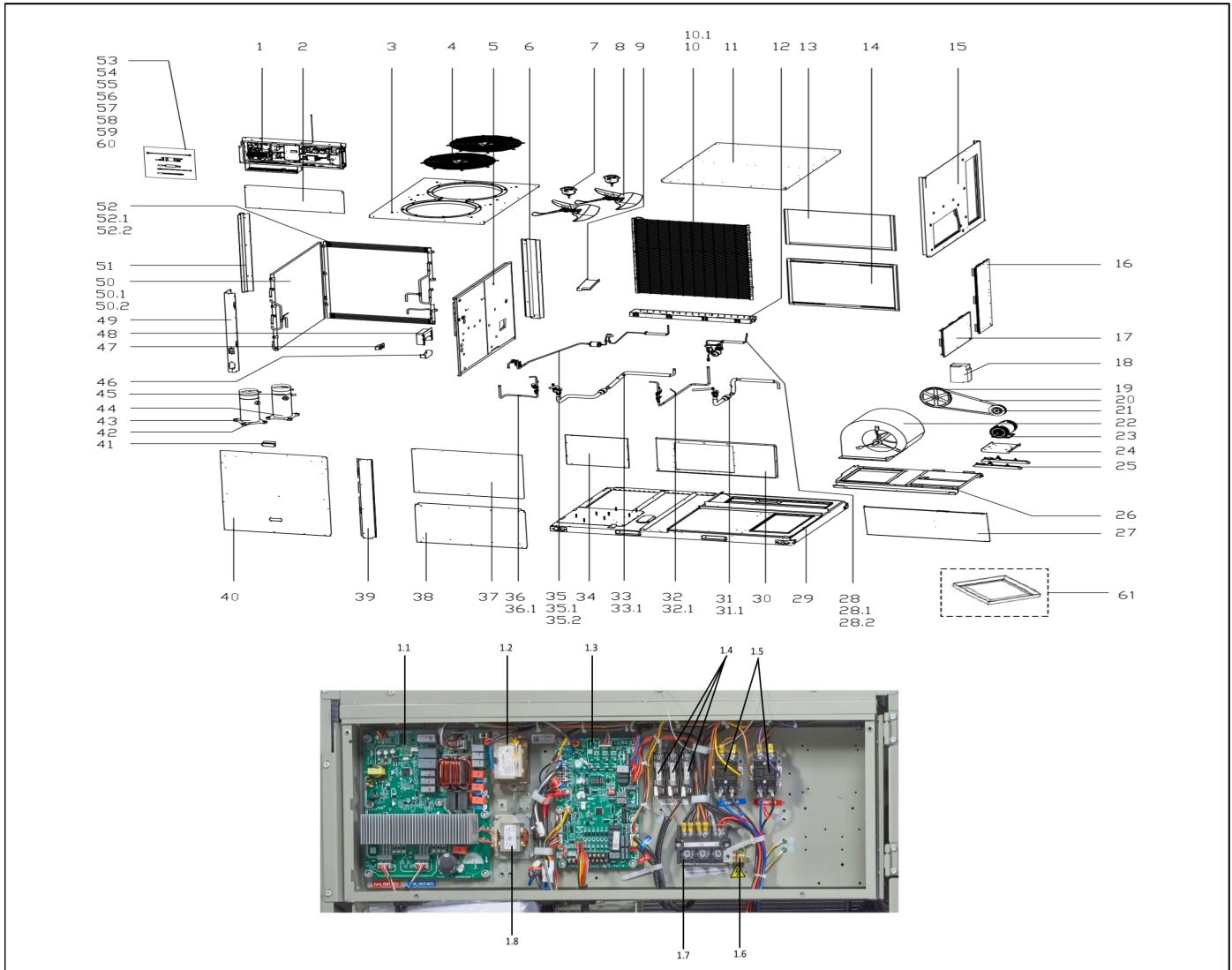


Exploded View

ComfortStar®

Model CRT7-90TT (40Q)
Service code: 40Q



EX_ID	Spare Parts Code	Part Name(EN)	Qty.	Price	Remarks
1	17227700A03612	Electrical Control Box Assembly	1		
1.1	17127000014279	Fan Power Drive Mounting Plate Assembly	1		
1.2	11203103002099	Linear Transformer	1		

1.3	17127700001326	Main Control Board Assembly	1		
1.4	11203001000028	Fuse	3		
1.5	11203502000021	AC Contactor	2		
1.6	11201708000008	Terminal	1		
1.7	17400401004156	Terminal Block	1		
1.8	17400306000323	Reactor	1		
2	12227700A08721	Electrical Control Box Cover	1		
3	12227700A09963	Upper Cover Assembly	1		
4	12927700000085	Grille	2		
5	12227700A09977	Partition Plate Assembly	1		
6	12227700A09984	Column assembly	1		
7	11002015022659	Brushless DC Motor	2		
8	12200104000016	Axial Flow Fan	2		
9	12227700A07891	Drainage pan welding plate	1		
10	15827700001172	Evaporator Assembly	1		
10.1	15727000000669	Mirco-multiport profiles heat exchanger	1		
12	12127700000217	Drainage pan assembly	1		
13	12227700A07907	Internal panel assembly	1		
14	12227700A09983	Internal panel assembly	1		
15	12227700A09992	Internal panel assembly	1		
16	12227700A09960	Cover Plate Assembly	1		
17	12227700A09966	Cover Plate Assembly	1		
18	17425200004527	Frequency converter	1		
19	12900701001656	Belt Pulley	1		
20	12600301003119	Belt	1		
21	12900701001197	Belt Pulley	1		
22	12200102000195	Centrifugal Fan	1		
23	11002013005653	Three Phase Asynchronous Motor	1		
24	12227700A07906	Motor holder	1		
25	12926100000975	Rail Assembly	2		
26	12227700009477	Air Duct Assembly	1		
27	12227700009463	Air Duct Assembly	1		
28	15427700002452	Throttle assembly	1		
28.1	15500504000075	Dry Filter	1		

28.2	15500213002309	Electronic Expansion Valve	1		
29	12227700A09982	Chassis Assembly	1		
30	12227700009438	Cover	1		
31	15427700002456	Suction Pipe Assembly	1		
31.1	17400516001409	Pressure switch	1		
32	15427700002457	Discharge Pipe Assembly	1		
32.1	17400516001410	High Pressure Controller	1		
33	15427700002458	Suction Pipe Assembly	1		
33.1	17400516001409	Pressure switch	1		
34	12227700009439	Cover	1		
35	15427700002461	Piston Throttling Valve Assembly	1		
35.1	15500504000075	Dry Filter	1		
35.2	15500213002309	Electronic Expansion Valve	1		
36	15427700002460	Discharge Pipe Assembly	1		
36.1	17400516001410	High Pressure Controller	1		
37	12227700A07908	Internal panel assembly	1		
38	12227700A09969	Internal panel assembly	1		
39	12227700A09970	Column assembly	1		
40	12227700A09965	Side Panel Assembly	1		
41	12100701000676	Small Handle	1		
42	11102010002139	Fixed Speed Scroll Compressor	1		
43	17402001000049	Compressor Electric Heater	1		
44	11102010002158	Fixed Speed Scroll Compressor	1		
45	17402001000499	Compressor Electric Heater	1		
46	12227700A07884	Waterproof plate	1		
47	12227700A07888	Waterproof board assembly	3		
48	12227700A07927	Waterproof board assembly	1		
49	12227700A09990	Column welding assembly	1		
50	15827700001349	Condenser Assembly	1		
50.1	15727000001126	Mirco-multiport profiles heat exchanger	1		
50.2	15127700007086	Condenser input pipe assembly	1		
51	12227700A09980	Column assembly	1		
52	15827700001352	Condenser Assembly	1		
52.1	15727000001127	Mirco-multiport profiles heat exchanger	1		

52.2	15127700007077	Condenser input pipe assembly	1		
53	11201007000230	Pipe Temperature Sensor	1		T1
54	11201007001800	Pipe Temperature Sensor	1		T2A
55	11201007000186	Pipe Temperature Sensor	1		T2B
56	11201007000033	Pipe Temperature Sensor	2		T3A,T3B
57	11201007000232	Pipe Temperature Sensor	1		T4
58	11201007000759	Pipe Temperature Sensor	1		T5A
59	11201007000333	Pipe Temperature Sensor	1		T5B
60	11201003000545	Gas sensor	1		indoor refrigerant leak detect sensor