

Model Number: BAR10-60-15(40M) / LUC17-60-15(40F)

Air Handler Heat Pump System	
Location:	Approval:
Engineer:	Date:
Submitted to:	Construction:
Submitted by:	Unit #:
Reference:	Drawing #:



INDOOR SPECIFICATION	
Indoor Air Flow (High/Low) (CFM)	1740/750
Indoor Noise Level (High/Low) (dBA)	53/46
Dimension (W×D×H)	inch 24-31/64×21-1/32×52-63/64
	mm 622×534×1346
Package (W×D×H)	inch 27-7/8×26-37/64×54-9/64
	mm 708×675×1375
Net/Gross Weight	lbs 154.3/170.6
	kg 70.0/77.4

OUTDOOR SPECIFICATION	
Compressor Type	Scroll
Compressor Model	SKDC051N1ULB
Refrigerant	R32
Refrigerant Oil Charge(mL)	1240
Refrigerant Oil	VG46
Outdoor Air Flow (Max) (CFM)	2950.0
Outdoor Noise Level (dBA)	60
Dimension (W×D×H)	inch 29-9/64×29-9/64×32-7/8
	mm 740×740×835
Package (W×D×H)	inch 30-5/16×30-5/16×34-1/16
	mm 770×770×865
Net/Gross Weight	lbs 182/193
	kg 82.5/87.5

EFFICIENCY			
Cooling			
SEER2	13.8		
EER2	11.7		

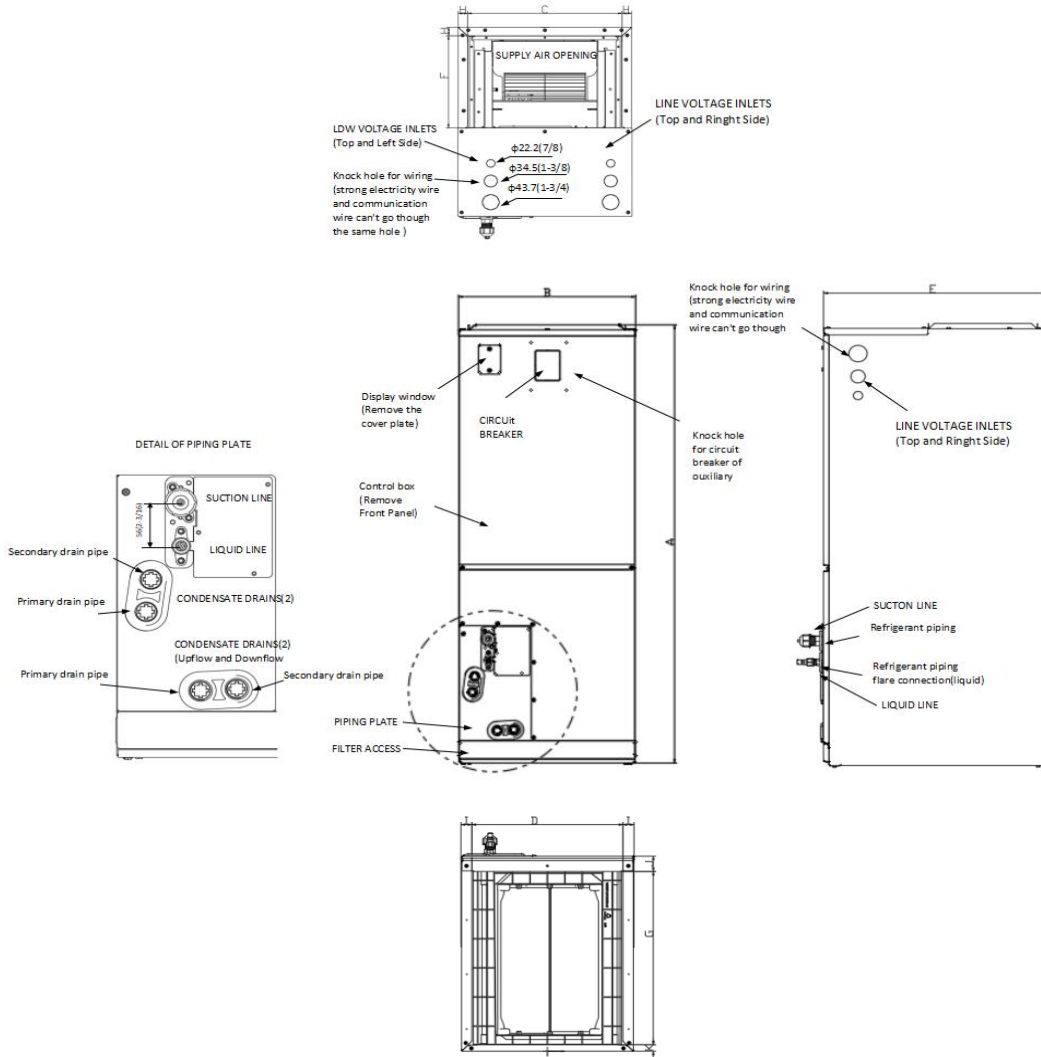
PERFORMANCE of Cooling	
Cooling (Btu/hr)	
Rated Capacity	54000
Standard Operating Range(°F)	23~125
Rated Cooling Conditions:	Indoor: 80°F DB/67°F WB Outdoor: 95°F DB/75°F WB

ELECTRICAL	
Indoor Power Supply	208/230V,60Hz,1Ph
Indoor MCA 115V/(208/230V)	7
Indoor MOP	10
Outdoor Power Supply	208/230V,60Hz,1Ph
Outdoor MCA	33
Outdoor MOP	50
Communication Wiring	AWG 8*3 Shielded
Compressor RLA	13.6
Outdoor Fan Motor RLA	2.3
Outdoor Fan Motor W	200
Indoor Fan Motor RLA	5.4
Indoor Fan Motor W	560
System Power Input @ Cooling (W)	4615
MCA: Min. circuit amps (A)	MOCP: Max. over current protection (A)
RLA: Rated load amps (A)	W: Fan motor rated output (W)

PIPING

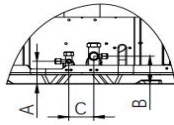
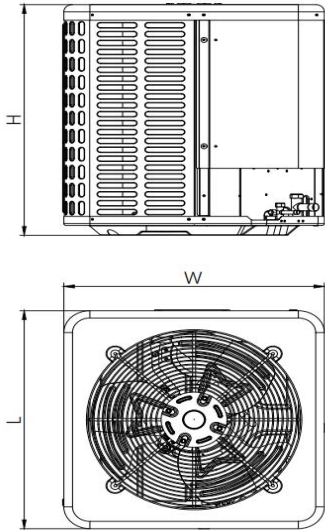
Throttle type(Indoor)	
Throttle type(Outdoor)	Capillary
Liquid Size	9.52mm(3/8in)
Gas Size	19mm(3/4in)
Max. Piping Length(ft/m)	213(65)
Max. Height Difference(ft/m)	98.4(30)
Max. Pre-charged Length(ft/m)	24.6(7.5)
Refrigerant Pre-charged Amount(oz/kg)	92(2.6)
Additional Charge of Refrigerant((oz/ft)/(g/m))	0.52(48)
Connection Method	Flared

Indoor Unit Dimension



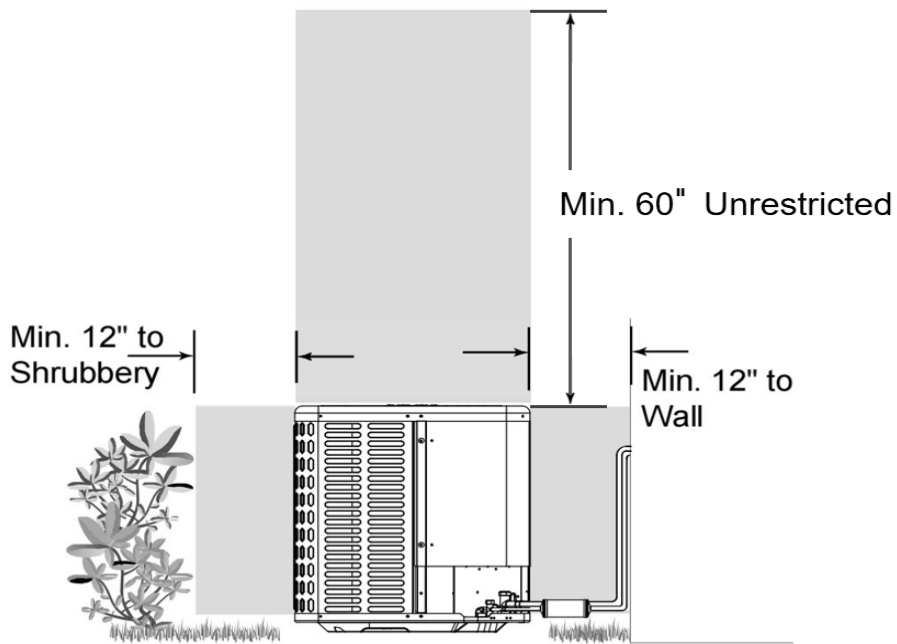
Dimensions		Model	18K/24K	30K/36K	42K/48K/60K
			inch	inch	inch
A	Model Height		45	49-7/32	52-63/64
B	Model Width		17-33/64	21-1/32	24-31/64
C	Supply air opening width		15-5/8	19-9/64	22-19/32
D	Return air opening width		15-25/64	18-47/64	22-23/64
E	Model Depth		21-1/32	21-1/32	21-1/32
F	Supply air opening Depth		10-9/32	10-9/32	10-9/32
G	Return air opening Depth		18-23/32	18-23/32	18-23/32
H	Supply air opening Clearance		15/16	15/16	15/16
I	Return air opening side Clearance		1-1/8	1-1/8	1-1/8
J	Return air opening front Clearance		1-21/32	1-21/32	1-21/32
K	Return air opening back Clearance		45/64	45/64	45/64

Outdoor Unit Dimension

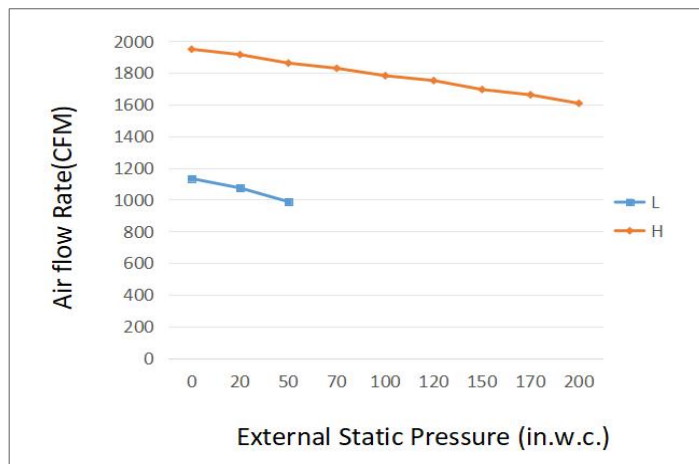


Dimensions		Model		18K/24K		30K/36K		42K/48K/60K	
		inch	mm	inch	mm	inch	mm		
W	Model width	23-5/8	600	29-9/64	740	29-9/64	740	29-9/64	740
L	Model length	23-5/8	600	29-9/64	740	29-9/64	740	29-9/64	740
H	Model height	25	635	25	635	32-7/8	835		
A	Liquid side valve height	2-31/64	63	2-31/64	63	2-31/64	63		
B	Distance between two valves	3-1/32	77	3-1/32	77	3-1/32	77		
C	Gas side valve height	2-9/32	58	2-9/32	58	2-9/32	58		

Installation Instruction For Outdoor Unit



Fan Performance For Indoor Unit



Features

- Multi-position installation: horizontal(left or right), vertical(up or down)
- ECM fan motor with constant torque technology
- External static pressure up to 0.80 In.W.G
- 1 inch R4.2 fiberglass free insulation reduces condensation and boosts efficiency(optional)
- Optional Auxiliary heat kit up to 20kW
- Easy Maintenance
- Multiple control options available:
 - Wired controller with built-in WiFi
 - Third-Party 24V Thermostat
- Adaptive Control System