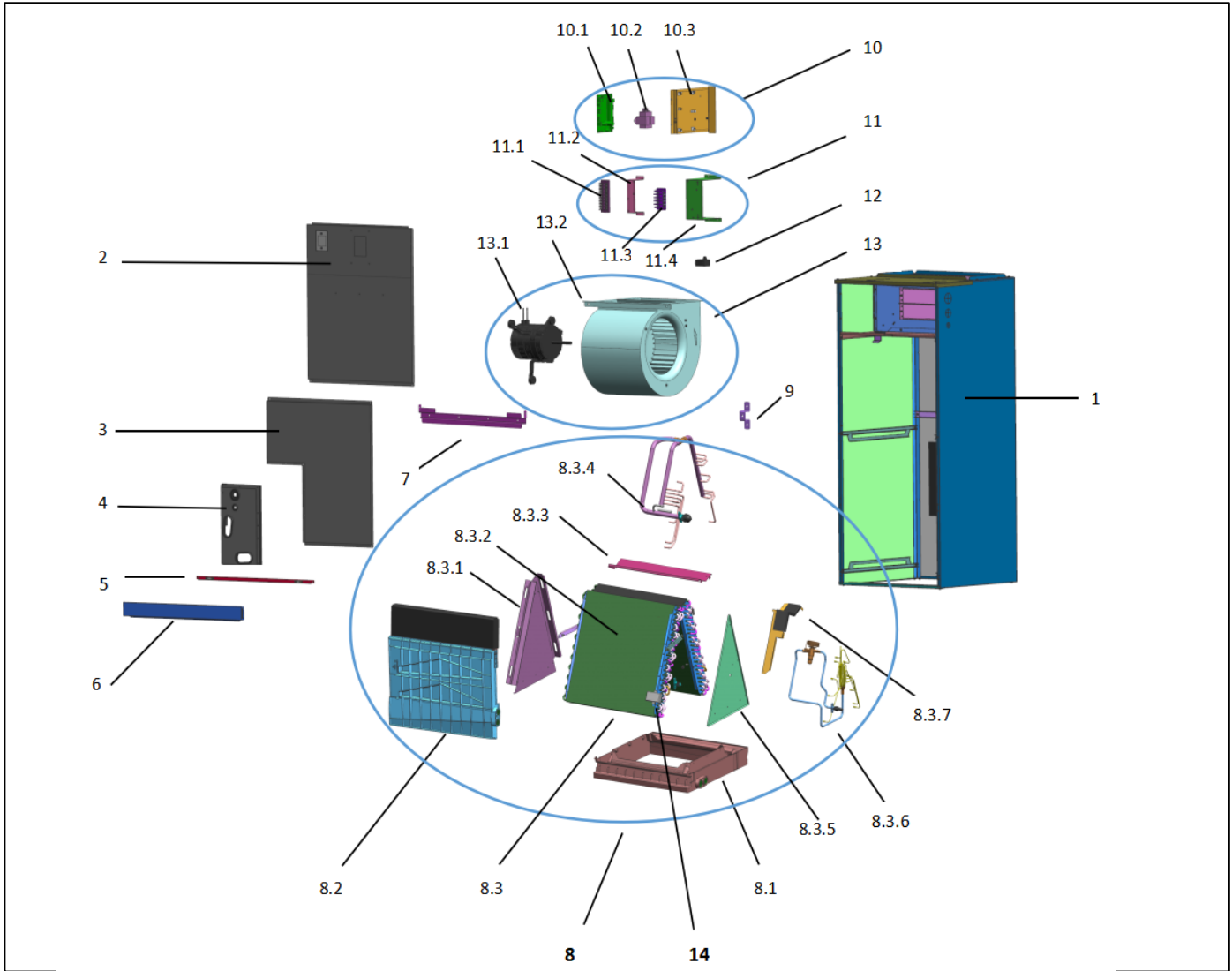


# Exploded View

**Model** ASH36SG32 (29L)  
**Service code:** 29L

**ComfortStar®**



EX_ID	Spare Parts Code	Part Name(EN)	Qty.	Price	Remarks
1	601235000139	Chassis assembly	1		
2	601235000141	Upper Front Panel Adhesive Assembly	1		
3	601235000142	Lower Front Panel Adhesive Assembly	1		

4	601235000203	Piping Cover Plate Adhesive Assembly	1		
5	601235000140	Filter Mesh Import Plate	1		
6	601235000143	Filter Net Cover Plate	1		
7	601235000151	Middel Connecting Plate	1		
8	601535000001	Evaporator and Water Pan Assembly	1		
8.1	601135000003	Main Water Pan Assembly	1		
8.2	601135000002	Vice Water Pan Assembly	1		
8.3	601544000084	Evaporator component	1		
8.3.1	601235000146	Rear Evaporator Sealing Plate Assembly	1		
8.3.2	601535000073	Evaporator Assembly	2		
8.3.3	601235000148	Evaporator Connection Plate Assembly	1		
8.3.4	601630000550	Flute-shaped Tube Assembly	1		
8.3.5	601235000021	Frant Evaporator Sealing Plate Assembly	1		
8.3.6	601636000149	Distributor Assembly	1		
8.3.7	601235000147	Evaporator Drainage Plate Assembly	1		
9	601235000150	Support Plate	1		
10	603335000001	Electrical Control Box Assembly	1		
10.1	601336000040	Main control board	1		
10.2	602311300003	Linear Transformer	1		
10.3	601235000022	Electrical Control Board Mounting Plate	1		
11	601235000004	Terminal Block Mounting Plate Assembly	1		
11.1	602404700070	24V Terminal Block	1		
11.2	601235000006	Terminal Block Mounting Plate	1		
11.3	602404700054	Terminal Block for Power Cables	1		
11.4	601235000005	Terminal Block Mounting Plate	1		
12	/	Slotted Capacitor (for AC motor)			
13	601235000010	Fan Motor and Wheel Assembly	1		
13.1	602401B00002	ECM fan motor	1		
13.2	601235000001	Impeller Scroll Assembly	1		
14	602301800002	Refrigerant leakage detector	1		
	602301500063	Temperature sensor assembly(T1)	1		
	602301500083	Temperature sensor assembly(T2)	1		