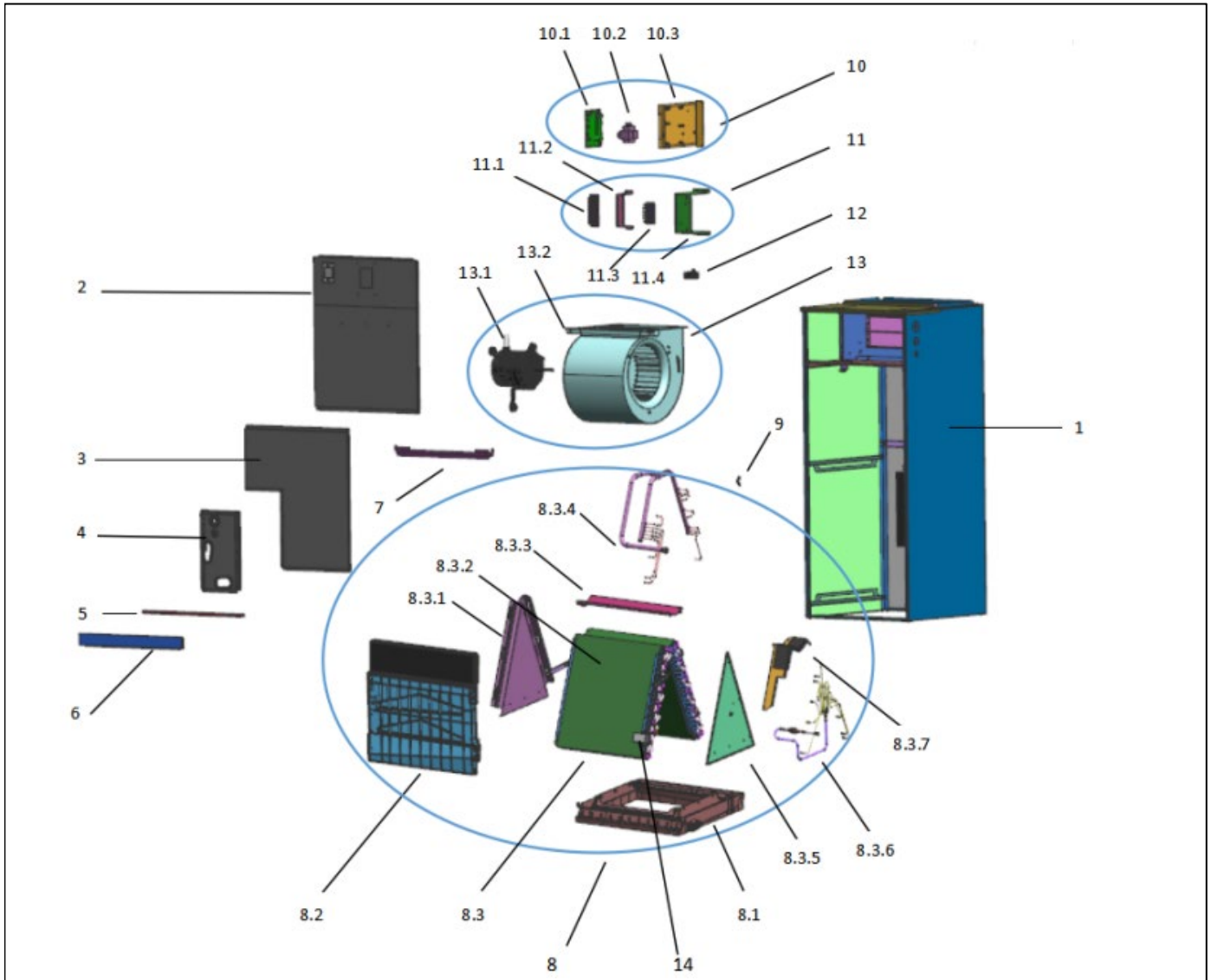


# Exploded View

**Model** LUC17-60-15 (40F)(448)

**ComfortStar®**

**Service code:** 40F/448



EX_ID	Spare Parts Code	Part Name(EN)	Qty.	Price	Remarks
1	601235000273	Chassis assembly	1		
2	601235000025	Upper Front Panel Adhesive Assembly	1		

3	601235000026	Lower Front Panel Adhesive Assembly	1		
4	601235000035	Piping Cover Plate Adhesive Assembly	1		
5	601235000032	Filter Mesh Import Plate	1		
6	601235000023	Filter Net Cover Plate	1		
7	601235000056	Middel Connecting Plate	1		
8	601535000109	Evaporator and Water Pan Assembly	1		
8.1	601135000004	Main Water Pan Assembly	1		
8.2	601135000005	Vice Water Pan Assembly	1		
8.3	601535000110	Evaporator component	1		
8.3.1	601235000028	Rear Evaporator Sealing Plate Assembly	1		
8.3.2	601535000111	Evaporator Assembly	1		
8.3.3	601235000065	Evaporator Connection Plate Assembly	1		
8.3.4	601630000420	Flute-shaped Tube Assembly	1		
8.3.5	601235000029	Frant Evaporator Sealing Plate Assembly	1		
8.3.6	601636000117	Distributor Assembly	1		
8.3.7	601235000030	Evaporator Drainage Plate Assembly	1		
9	601235000007	Support Plate	1		
10	603335000020	Electrical Control Box Assembly	1		
10.1	601336000053	Main control board	1		
10.2	602311300008	Linear Transformer	1		
10.3	601235000022	Electrical Control Board Mounting Plate	1		
11	601235000275	Terminal Block Mounting Plate Assembly	1		
11.1	602404700069	24V Terminal Block	1		
11.2	601235000006	Terminal Block Mounting Plate	1		
11.3	602404700054	Terminal Block for Power Cables	1		
11.4	601235000005	Terminal Block Mounting Plate	1		
12	/	Slotted Capacitor (for AC motor)	1		
13	601235000033	Fan Motor and Wheel Assembly	1		
13.1	602401B00003	ECM fan motor	1		
13.2	601235000034	Impeller Scroll Assembly	1		
14	602301800002	Refrigerant leakage detector	1		
	602301500083	Temperature sensor(T2)	1		