

Model Number: BAH10-60-15(44M) / LUC17-60-15 (448)

Air Handler Heat Pump System	
Location:	Approval:
Engineer:	Date:
Submitted to:	Construction:
Submitted by:	Unit #:
Reference:	Drawing #:



INDOOR SPECIFICATION	
Indoor Air Flow (High/Low) (CFM)	1740/750
Indoor Noise Level (High/Low) (dBA)	53/46
Dimension (WxDxH)	24-31/64x21-1/32x52-63/64
	622x534x1346
Package (WxDxH)	27-7/8x26-37/64x54-9/64
	708x675x1375
Net/Gross Weight	165/184
	75/83.5

OUTDOOR SPECIFICATION	
Compressor Type	Scroll
Compressor Model	SKDC049N1ULB
Refrigerant	R32
Refrigerant Oil Charge(mL)	1240
Refrigerant Oil	VG46
Outdoor Air Flow (Max) (CFM)	2950.0
Outdoor Noise Level (dBA)	60
Dimension (WxDxH)	29-9/64x29-9/64x32-7/8
	740x740x835
Package (WxDxH)	30-5/16x30-5/16x34-1/16
	770x770x865
Net/Gross Weight	182/193
	82.5/87.5

EFFICIENCY			
Cooling		Heating	
SEER2	14.3	HSPF2-4	7.5
EER2	11.7	COP	3.80

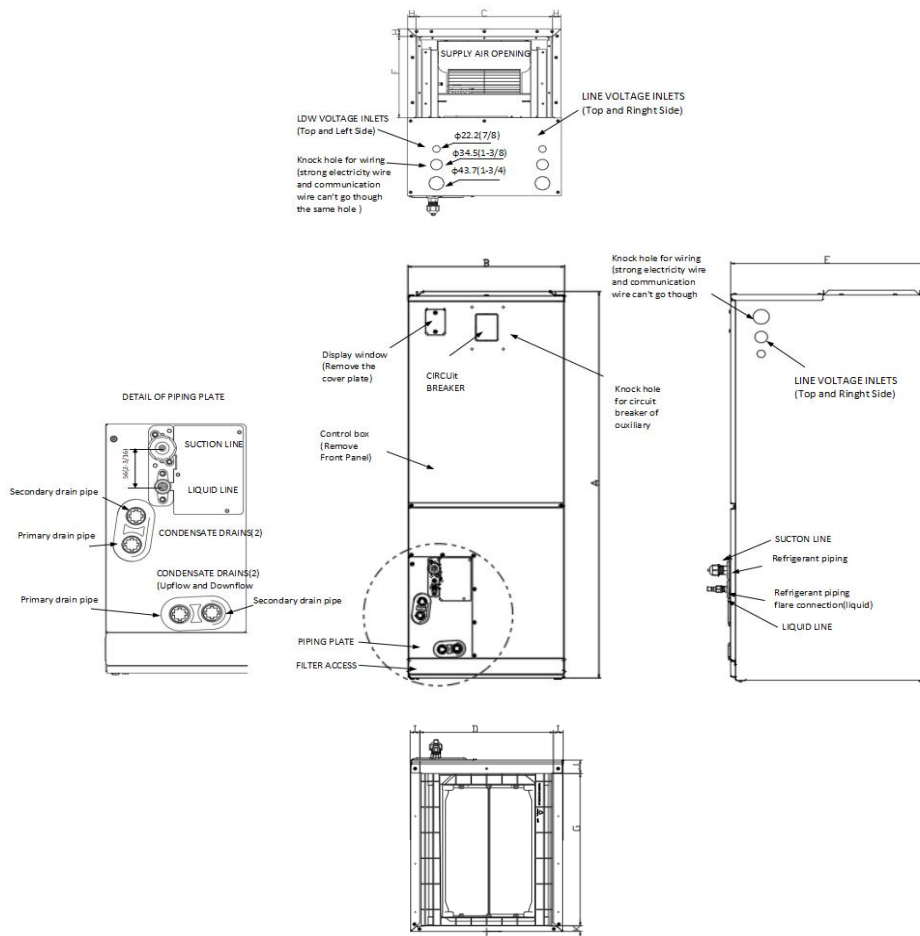
PERFORMANCE of Cooling	
Cooling (Btu/hr)	
Rated Capacity	54000
Min/Max Capacity	/
Moisture Removal(L/h)	5.2
Standard Operating Range(*F/*C)	23~125.6(-5~52)
Rated Cooling Conditions:	Indoor: 80°F DB/67°F WB Outdoor: 95°F DB/75°F WB

PERFORMANCE of Heating	
Heating (Btu/hr)	
1. @ 47°F Rated	53000
2. @ 47°F Min/Max Capacity	/
3. @ 17°F Rated	37400
4. @ 5°F Rated: Capacity / COP	31400/2.5
5. @ 5°F Max: Capacity	31400
Standard Operating Range(*F/*C)	-4~86(-20~30)
1. Rated Heating Conditions:	Indoor: 70°F DB/60°F WB Outdoor: 47°F DB/43°F WB
2. Rated Heating Conditions:	Indoor: 70°F DB/60°F WB Outdoor: 17°F DB/15°F WB
3. Heating Conditions, Compressor Operating at Max. Frequency	Indoor: 70°F DB/60°F WB Outdoor: 5°F DB/5°F WB

ELECTRICAL	
Indoor Power Supply	208/230V,60Hz,1Ph
Indoor MCA 115V/(208/230V)	7
Indoor MOP	10
Outdoor Power Supply	208/230V,60Hz,1Ph
Outdoor MCA	40
Outdoor MOP	50
Communication Wiring	AWG 20x3 Shielded
Compressor RLA	15.6
Outdoor Fan Motor RLA	0.92
Outdoor Fan Motor W	200
Indoor Fan Motor RLA	5.4
Indoor Fan Motor W	560
System Power Input @ Cooling (W)	3671.328671
System Power Input @ Heating (W)	4050
MCA: Min. circuit amps (A)	MOCP: Max. over current protection (A)
RLA: Rated load amps (A)	W: Fan motor rated output (W)

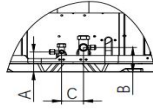
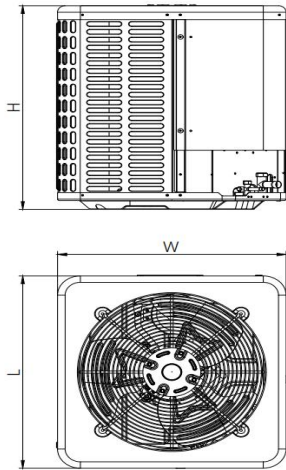
PIPING	
Throttle type(Indoor)	Piston
Throttle type(Outdoor)	Capillary
Liquid Size	9.52mm(3/8in)
Gas Size	19mm(3/4in)
Max. Piping Length(ft/m)	213(63.9)
Max. Height Difference(ft/m)	98(30)
Max. Pre-charged Length(ft/m)	24.6(7.5)
Refrigerant Pre-charged Amount(oz/kg)	112.864(3.2)
Additional Charge of Refrigerant(oz/ft)/(g/m)	0.52(48)
Connection Method	Flared

Indoor Unit Dimension



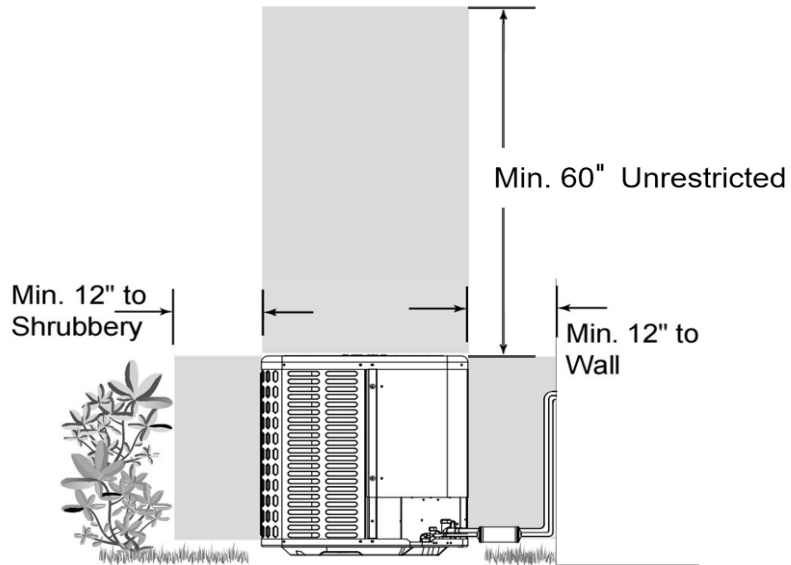
Dimensions		Model	18K/24K	30K/36K	42K/48K/60K
			inch	inch	inch
A	Model Height		45	49-7/32	52-63/64
B	Model Width		17-33/64	21-1/32	24-31/64
C	Supply air opening width		15-5/8	19-9/64	22-19/32
D	Return air opening width		15-25/64	18-47/64	22-23/64
E	Model Depth		21-1/32	21-1/32	21-1/32
F	Supply air opening Depth		10-9/32	10-9/32	10-9/32
G	Return air opening Depth		18-23/32	18-23/32	18-23/32
H	Supply air opening Clearance		15/16	15/16	15/16
I	Return air opening side Clearance		1-1/8	1-1/8	1-1/8
J	Return air opening front Clearance		1-21/32	1-21/32	1-21/32
K	Return air opening back Clearance		45/64	45/64	45/64

Outdoor Unit Dimension

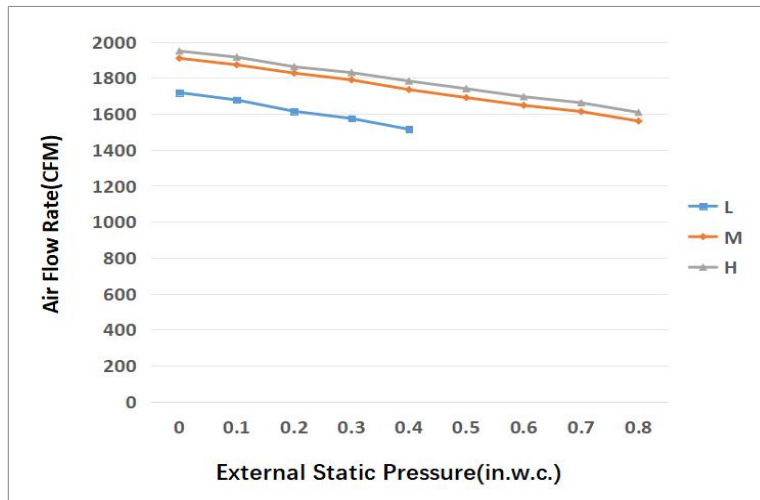


Dimensions		18K/24K		30K/36K		42K/48K/60K	
		inch	mm	inch	mm	inch	mm
W	Model width	23-5/8	600	29-9/64	740	29-9/64	740
L	Model length	23-5/8	600	29-9/64	740	29-9/64	740
H	Model height	25	635	25	635	32-7/8	835
A	Liquid side valve height	2-31/64	63	2-31/64	63	2-31/64	63
B	Distance between two valves	3-1/32	77	3-1/32	77	3-1/32	77
C	Gas side valve height	2-9/32	58	2-9/32	58	2-9/32	58

Installation Instruction For Outdoor Unit



Fan Performance For Indoor Unit



Features

- Multi-position installation: horizontal(left or right), vertical(up or down)
- External static pressure up to 0.80 In.W.G
- 1 inch R4.2 fiberglass free insulation reduces condensation and boosts efficiency(optional)
- Optional Auxiliary heat kit up to 20kW
- Easy Maintenance
- Multiple control options available:
 - Wired controller with built-in WiFi
 - Third-Party 24V Thermostat
- Adaptive Control System
- Crankcase heater equipped as standard