

Model Number: BAH17-30-15(44H) / LUC17-30-15 (444)

Air Handler Heat Pump System	
Location:	Approval:
Engineer:	Date:
Submitted to:	Construction:
Submitted by:	Unit #:
Reference:	Drawing #:



INDOOR SPECIFICATION	
Indoor Air Flow (High/Low) (CFM)	950/520
Indoor Noise Level (High/Low) (dBA)	40/36
Dimension (W×D×H)	inch 21-1/32×21-1/32×49-7/32
	mm 534×534×1245
Package (W×D×H)	inch 24-13/32×26-37/64×50-13/64
	mm 620×675×1275
Net/Gross Weight	lbs 137/151
	kg 62/68.5

OUTDOOR SPECIFICATION	
Compressor Type	Rotary
Compressor Model	KSF230N1VKTB
Refrigerant	R32
Refrigerant Oil Charge(mL)	410
Refrigerant Oil	VG74
Outdoor Air Flow (Max) (CFM)	2650.0
Outdoor Noise Level (dBA)	59
Dimension (W×D×H)	inch 29-9/64×29-9/64×25
	mm 740×740×635
Package (W×D×H)	inch 30-5/16×30-5/16×26-3/16
	mm 770×770×665
Net/Gross Weight	lbs 139/148
	kg 63.1/67

EFFICIENCY			
Cooling		Heating	
SEER2	14.3	HSPF2-4	7.5
EER2	11.7	COP	3.70

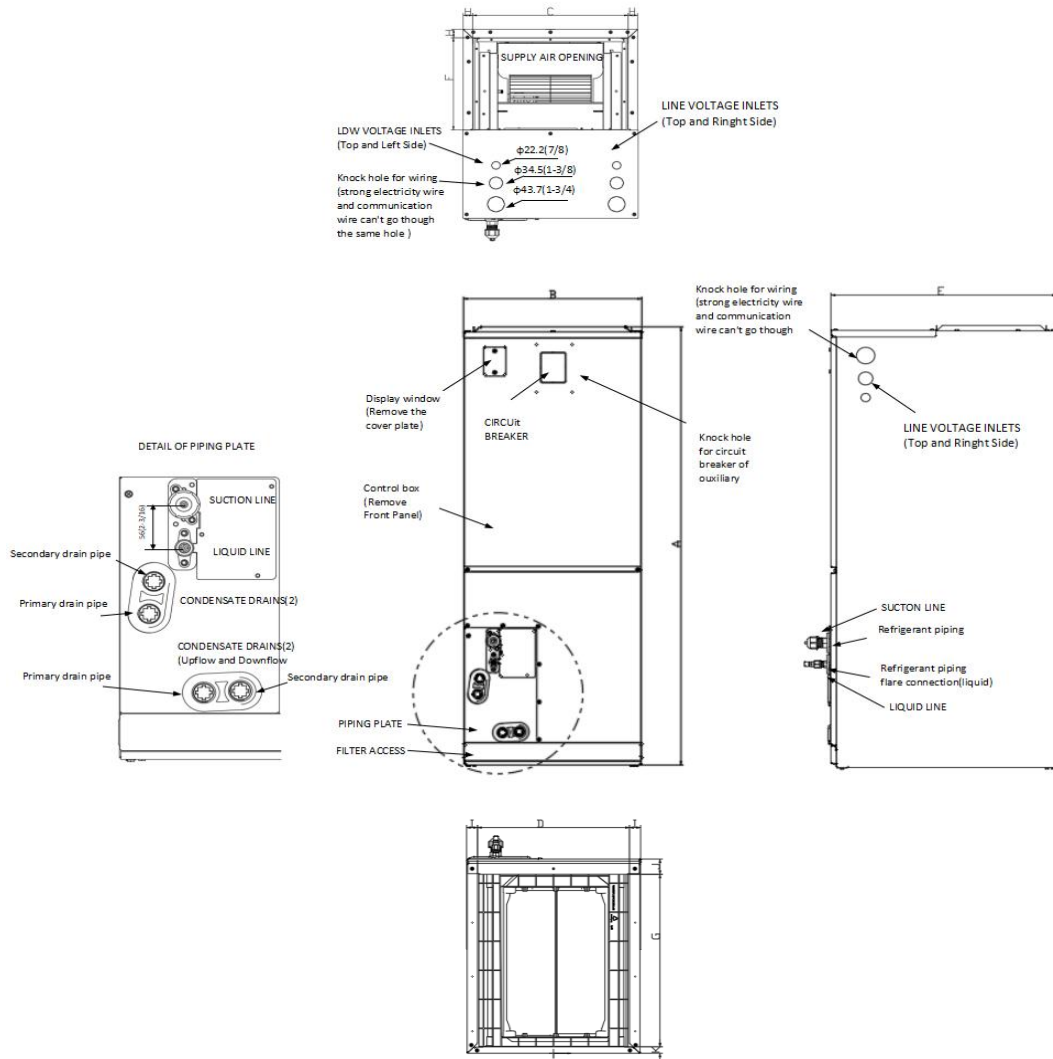
PERFORMANCE of Cooling	
Cooling (Btu/hr)	
Rated Capacity	30000
Min/Max Capacity	/
Moisture Removal(L/h)	2.8
Standard Operating Range(°F/°C)	23~125.6(-5~52)
Rated Cooling Conditions:	Indoor: 80°F DB/67°F WB Outdoor: 95°F DB/75°F WB

PERFORMANCE of Heating	
Heating (Btu/hr)	
1. @ 47°F Rated	30000
2. @ 47°F Min/Max Capacity	/
3. @ 17°F Rated	18500
4. @ 5°F Rated: Capacity / COP	15500/2.2
5. @ 5°F Max: Capacity	15500
Standard Operating Range(°F/°C)	-4~86(-20~30)
1. Rated Heating Conditions:	Indoor: 70°F DB/60°F WB Outdoor: 47°F DB/43°F WB
2. Rated Heating Conditions:	Indoor: 70°F DB/60°F WB Outdoor: 17°F DB/15°F WB
3. Heating Conditions, Compressor Operating at Max. Frequency	Indoor: 70°F DB/60°F WB Outdoor: 5°F DB/5°F WB

ELECTRICAL	
Indoor Power Supply	208/230V,60Hz,1Ph
Indoor MCA 115V/(208/230V)	5
Indoor MOP	6
Outdoor Power Supply	208/230V,60Hz,1Ph
Outdoor MCA	20
Outdoor MOP	25
Communication Wiring	AWG 20×3 Shielded
Compressor RLA	9.8
Outdoor Fan Motor RLA	0.92
Outdoor Fan Motor W	200
Indoor Fan Motor RLA	2.23
Indoor Fan Motor W	420
System Power Input @ Cooling (W)	、
System Power Input @ Heating (W)	2360
MCA: Min. circuit amps (A)	MOCP: Max. over current protection (A)
RLA: Rated load amps (A)	W: Fan motor rated output (W)

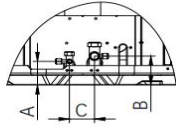
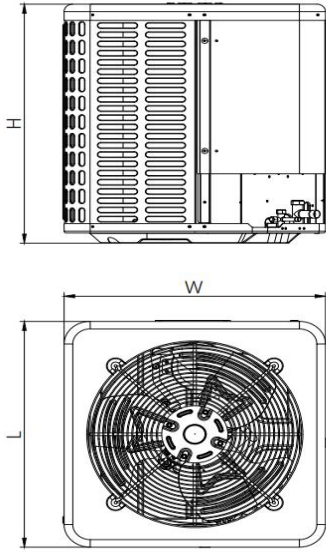
PIPING	
Throttle type(Indoor)	Piston
Throttle type(Outdoor)	Capillary
Liquid Size	9.52mm(3/8in)
Gas Size	19mm(3/4in)
Max. Piping Length(ft/m)	131(40)
Max. Height Difference(ft/m)	82(24.6)
Max. Pre-charged Length(ft/m)	24.6(7.5)
Refrigerant Pre-charged Amount(oz/kg)	81.121(2.3)
Additional Charge of Refrigerant((oz/ft)/(g/m))	0.52(48)
Connection Method	Flared

## Indoor Unit Dimension



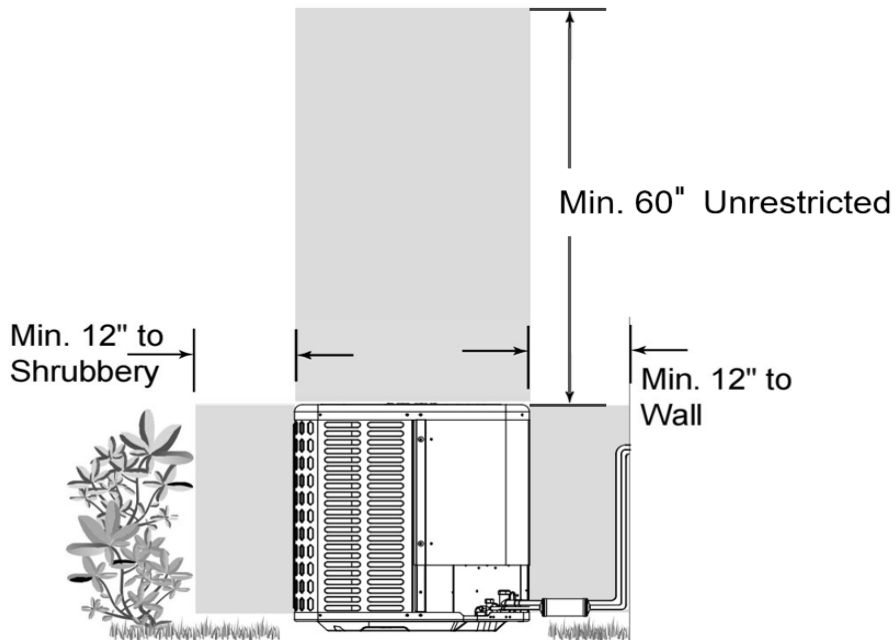
Dimensions		Model	18K/24K	30K/36K	42K/48K/60K
			inch	inch	inch
A	Model Height		45	49-7/32	52-63/64
B	Model Width		17-33/64	21-1/32	24-31/64
C	Supply air opening width		15-5/8	19-9/64	22-19/32
D	Return air opening width		15-25/64	18-47/64	22-23/64
E	Model Depth		21-1/32	21-1/32	21-1/32
F	Supply air opening Depth		10-9/32	10-9/32	10-9/32
G	Return air opening Depth		18-23/32	18-23/32	18-23/32
H	Supply air opening Clearance		15/16	15/16	15/16
I	Return air opening side Clearance		1-1/8	1-1/8	1-1/8
J	Return air opening front Clearance		1-21/32	1-21/32	1-21/32
K	Return air opening back Clearance		45/64	45/64	45/64

## Outdoor Unit Dimension

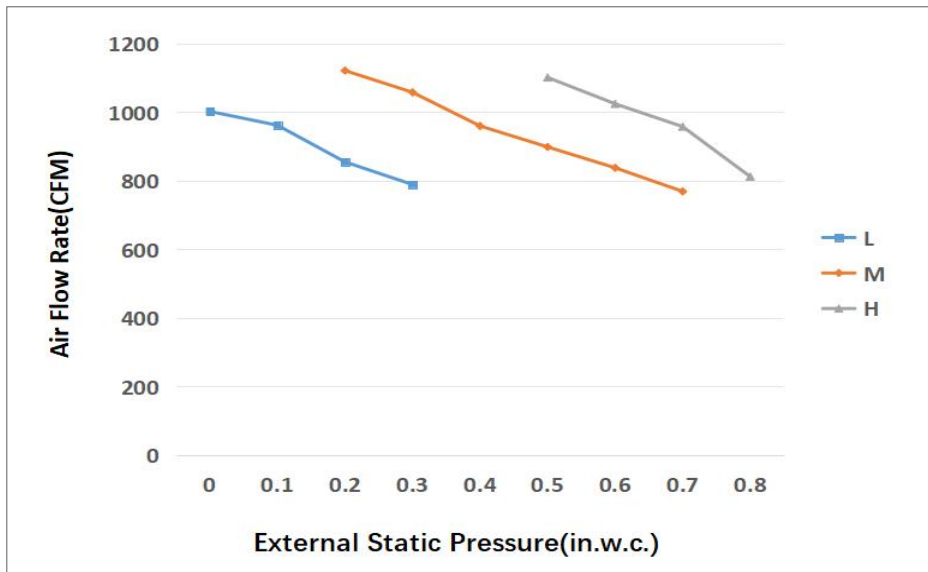


Dimensions \ Model		18K/24K		30K/36K		42K/48K/60K	
		inch	mm	inch	mm	inch	mm
W	Model width	23-5/8	600	29-9/64	740	29-9/64	740
L	Model length	23-5/8	600	29-9/64	740	29-9/64	740
H	Model height	25	635	25	635	32-7/8	835
A	Liquid side valve height	2-31/64	63	2-31/64	63	2-31/64	63
B	Distance between two valves	3-1/32	77	3-1/32	77	3-1/32	77
C	Gas side valve height	2-9/32	58	2-9/32	58	2-9/32	58

## Installation Instruction For Outdoor Unit



## Fan Performance For Indoor Unit



### Features

- Multi-position installation: horizontal(left or right), vertical( up or down)
- External static pressure up to 0.80 In.W.G
- 1 inch R4.2 fiberglass free insulation reduces condensation and boosts efficiency(optional)
- Optional Auxiliary heat kit up to 20kW
- Easy Maintenance
- Multiple control options available:
  - Wired controller with built-in WiFi
  - Third-Party 24V Thermostat
- Adaptive Control System
- Crankcase heater equipped as standard